

200single Duble-Needle pattern Machine

# 200种全电脑单双针花样机

Openration manual and part sheet

## 说明书及零件清单

this manual is only for reference!

本手册仅供参考

## 一、机器的操作

### II. Machine operation

#### 1. 机针的安装

##### 1. Installation of frame needle

- (1) 手动动手轮，使针杆上升到最高位置：
- (1) Control the hand wheel manually to elevate the needle bar to the highest position;
- (2) 拧松装针轴套上的机针紧定螺丝：
- (2) Loosen the frame needle on the needle shaft sleeve and fix the screw;
- (3) 将机针装入装针轴套孔中，并装到底，同时应确保机针的长凹槽要面向操作者：
- (3) Put the frame needle into the bore of needle shaft sleeve to the bottom and sure the long groove of frame needle should face the operator;
- (4) 用机针紧定螺丝将机针固定牢固。
- (4) Fix the screw tightly with the frame needle.

#### 2. 针线的穿法

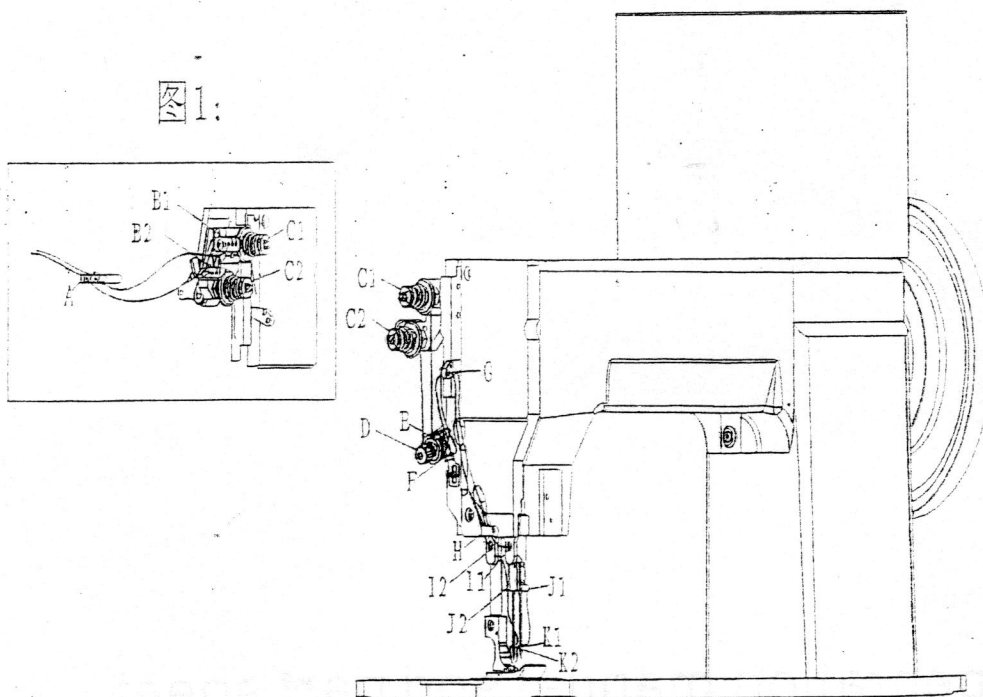
##### 2. Threading of needle

步骤：

Steps:

- (1) 线架上，托盘上的线先穿过线送线导柱 A 孔内，并且缠绕着孔，穿法方式如图 1 所示：
- (1) On the thread stand, the thread on the tray firstly runs through to the A bore of thread guide pillar and wins the bore. The threading is seen in figure 1;

图 1:



- (2) 穿过线挂 B1 或 B2 的孔，并且缠绕着孔：
- (2) Thread to hang the hold of B1 or B2 and wind the bore;
- (3) 依顺时针方向，缠绕控制钮 C1 或 C2 的压线盘：
- (3) Wind the cable press plate of control button C1 or C2 in the clockwise direction;
- (4) 依逆时针方向旋转，缠绕在控制钮 D 的内侧调整线轮上：
- (4) Rotate in the anticlockwise direction and wind at the inside adjustment thread wheel of control button D;

- (5) 越过吊线弹簧座 E;
- (5) Cross the suspension spring seat E;
- (6) 再穿过挑线弹簧 F 内孔;
- (6) Then thread the inside bore of thread take-up spring F;
- (7) 线从后面穿过挑线杆的内孔 G;
- (7) The thread runs through the inside bore of take-up-lever G.;
- (8) 穿过分线器 H, 再穿过 I1 或 I2 的孔;
- (8) Thread the deconcentrator H and then bore of I1 or I2;
- (9) 穿过针杆外套 J1 或 J2 的孔;
- (9) Thread the bore of needle bar sleeve J1 or J2;
- (10) 再穿入针孔内 K1 或 K2.
- (10) Then thread the needle bole K1 or K2.

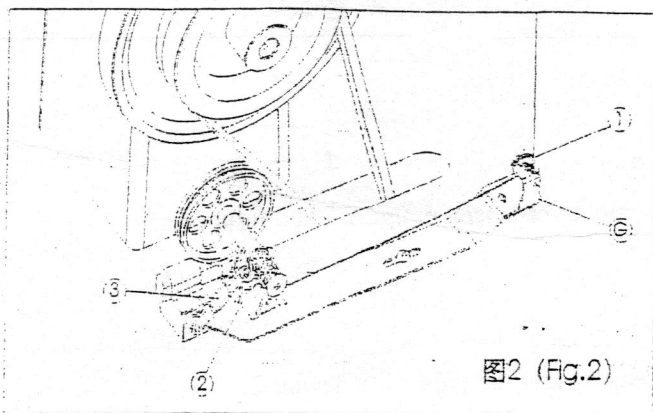
### 3. 线轴部分

#### 3. Spool

##### 3.1 线轴(梭子)缠线(图2)

##### 3.1 Spool (shuttle) kinking (see in figure 2)

- (1) 将空线轴(梭子)推入缠线杆;
- (1) Push the empty spool (shuttle) into the winding rod;
- (2) 将线从上面穿过线导板 1;
- (2) Thread the guide board 1 from above;
- (3) 顺时针穿过可预先调整卷线器张力系统 G 的圆盘之间;
- (3) Thread the roundel of the pre-adjusted winder tension system G.
- (4) 越过线导板 2;
- (4) Cross the thread guide board 2.
- (5) 线在线轴(梭子)上缠绕几圈, 穿过线轴(梭子的)缠绕孔, 并且拉出超过约 3cm;
- (5) The thread is wound on the spool for several loops and then runs through the spool (the winding bore on the shuttle, which can pull out the thread about 3cm.)
- (6) 将停止杆 3 顶住线轴(梭子); 如果在绕线时, 机器没有车缝则压脚要抬高; 启动机器, 在起始几次缠绕时, 紧紧地握住线松脱的一端, 当线轴的线缠满时, 卷线器会自动停止
- (6) Hold the stop rod 3 against the spool (shuttle); in winding, if there is no sewing on the machine, the presser foot shall rise high; start the machine, at the inception of winding, tightly hold one end of the loose thread and when the spool is wound up, the winder will stop automatically.



##### 3.2 线轴更换(图3、图4)

##### 3.2 Spool replacement (see in figure 3 and figure 4)

- (1) 先将机器关掉;
- (1) Turn off the machine;
- (2) 旋转皮带轮将挑线杆摇到最高位置;
- (2) Rotate the belt sheave to make the take-up-lever rise to the highest position;
- (3) 压下弹簧 a, 线轴外毂弹出并取出线轴;
- (3) Press down the spring a, then the outside hub of spool will pop out and take out the spool
- (4) 插入满的线轴于线轴外毂中, 当拉起线轴环线时, 线轴的旋转方向必须和梭头旋转方向一致,

如图 4:

- (4) Insert the full spool to the outside hub. And when loop line of spool is pulled up, "the rotation direction of spool shall be consistency with that of shuttle head", as seen in figure 4.

- (5) 将线轴的线拉穿过弹簧 b 底下的缺口, 并超过 8cm

- (5) Pull the thread on the spool to run through the gap at the bottom of spring b more than 8cm

### 3.3 线轴线张力的调整 (图 3)

#### 3.3 Tension adjustment of the thread on spool (seen in figure 3)

- (1) 打开梭头盖弹簧压板 c, 移开梭头盖 d, 拿出摆梭;

- (1) Open the spring bearer plate c on the shuttle head cover, remove the shuttle head cover d and then take out the shuttle.

- (2) 松开螺丝 e, 并用螺丝 f 调整线张力;

- (2) Loosen the crew e and adjust the thread tension with sc

- (3) 重新锁紧螺丝 e

- (3) Lock screw e again.

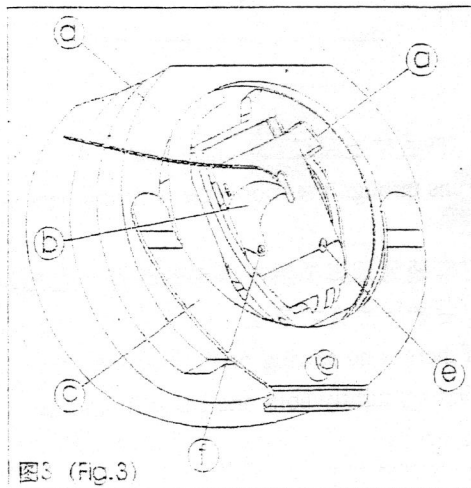


图3 (Fig.3)

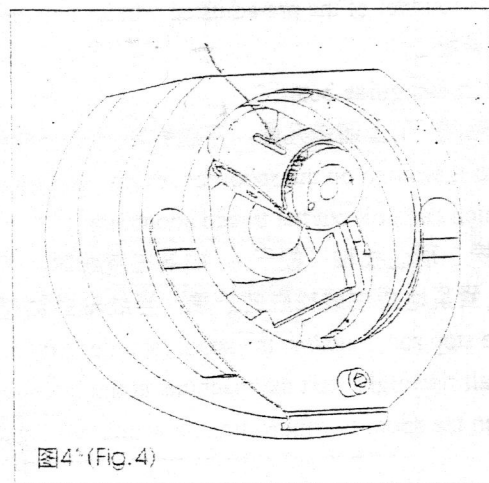


图4 (Fig.4)

## 4. 针线部分

### 4. Needle and thread

#### 4.1 调整针线的张力 (图 7、图 8)

##### 4.1 Adjust the tension of needle and thread (seen in figure 7 and figure 8)

- (1) 先关掉机器;

- (1) Turn off the machine;

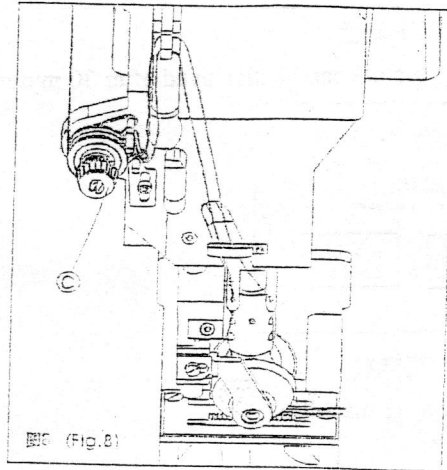
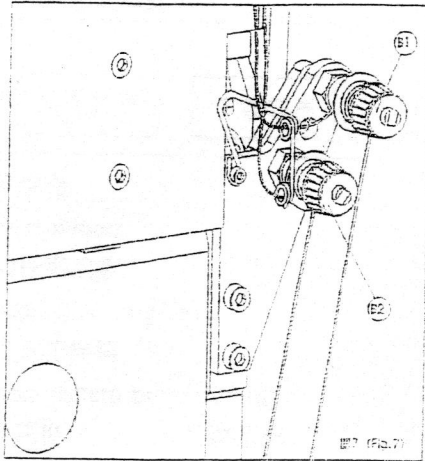
- (2) 先松开针线张力辅助调紧器 C;

- (2) Loosen the needle thread tension assisted tightening device C;

- (3) 由针线张力主调紧器 B1、B2 来调整主针线张力;

- (3) Use the main tightening device B1 or B2 to adjust the tension of main needle and thread.

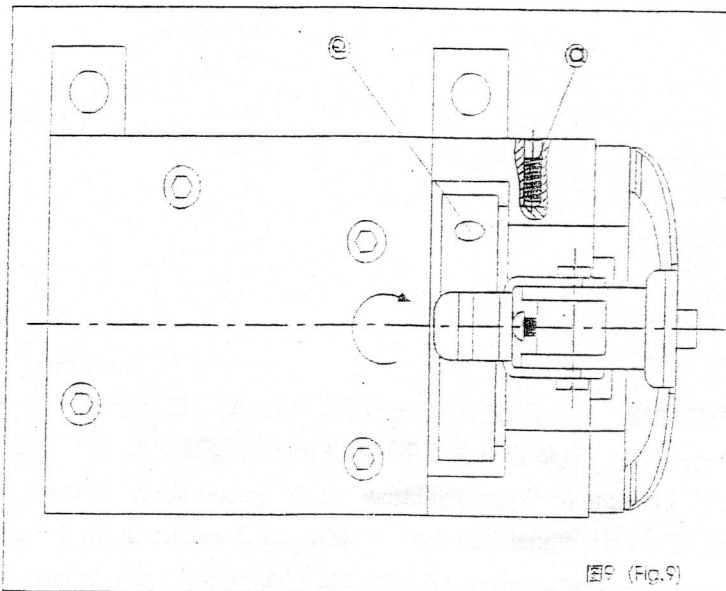
- (4) 直到来自针的线及线轴的线环被拉进车缝布料;
- (4) Until the thread from the needle and the thread loop of spool are haled in sewing cloth.
- (5) 再由针线张力辅助调整器 C 做最后调整, 它的线
- (5) Then use the assisted tightening device C to adjust again, its thread
- (6) 张力调整必须被调整在比主针线张力为低:
- (6) The tension shall be adjusted to be lower than that of main thread.



5. 整摆梭 (图 9)

5. Shuttle (see in figure 9)

- (1) 放松固定螺丝 a:
- (1) Loosen the anchor screw a:
- (2) 用工具插入梭头前后调整器 Q 的圆孔左右旋转, 摆梭可前后调整:
- (2) Use the implement to insert into the round bore of adjuster before and behind the shuttle and then rotate from left to right, and then the shuttle can be adjusted on the front and back.
- (3) 再锁紧固定螺丝 a:
- (3) Lock anchor screw a again.

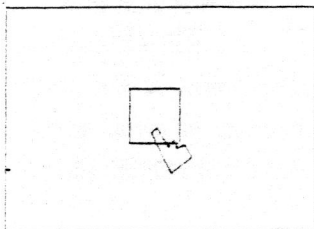


二、显示屏操作说明:

II. Operation instruction of display screen

1. 打开电源开关，显示开机画面如下：

1. Turn on the power switch, with the startup picture displayed as follows.



2. 30 秒后出现以下画面。

2. The following picture can be displayed after 30 minutes.



欢迎使用单双针花样机

Welcome to the sewing machine

请选择语言

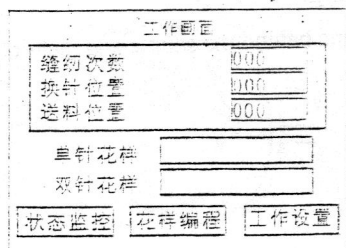
select language

中文 英文

Chinese English

(3) 单击中文显示以下画面

3. Click "Chinese" and display the following picture.



工作画面

Work picture

缝纫次数 0 0 0

Sewing times

换针位置 0 0 0

Position of needle replacement

送料位置 0 0 0

Feeding position

单针花样

Single needle pattern

双针花样

Double needle pattern

状态监控

花样编程

工作设置

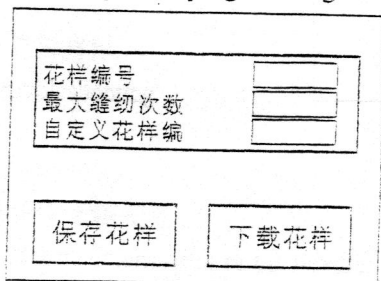
Status monitor

pattern programming

work setting

(4) 单击画面上的“花样编程”按钮，显示以下画面。

4. Click the "pattern programming" and then the following picture can be displayed.



花样编号

Pattern number

最大缝纫次数

Maximum sewing times

自定义花样编

Custom pattern programming

保存花样

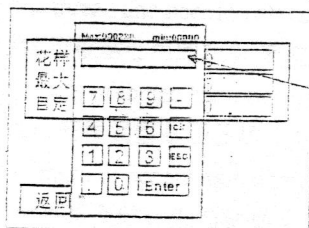
下载花样

Save pattern

download pattern

5. 单击“花样编号”后面的输入框，输入所需要的花样代号，按 Enter 键确认。

5. Click "pattern programming" and input the required pattern code. Press Enter for confirmation



显示花样代号

花样

Pattern

最大

Maximum

自定

Custom

返回

Return

显示花样代号

Display pattern code

6. “送料长度”等级设置，单击“工作画面”进入以下画面 A，单击“工作设置”进入以下画面 B，在单击“长度等级”后面的输入框，显示以下画面 C，输入你所需要的长度等级，按 Enter 键确认。

6. "Feeding length" grade setting. Click "working picture" to enter the following picture A. click "working setting" to enter the following picture B and click behind "length grade" and then the following picture C is displayed. Input the required length grade and click Enter for confirmation.

缝纫次数	000	
换针位置	000	
送料位置	000	
单针花样		
双针花样		
状态监控	花样编程	工作设置

花样编号	0
长度等级	5
返回	

Max:000230	mem:00002
花样	
长度	
换针	7 8 9 -
	4 5 6 OK
	1 2 3 ESC
返回	0 Enter

输入长度等级 (1-5)

画面 A:

Picture A:

缝纫次数 0 0 0  
 Sewing times  
 换针位置 0 0 0  
 Position of needle replacement  
 送料位置 0 0 0  
 Feeding position  
 单针花样  
 Single needle pattern  
 双针花样  
 Double needle pattern

画面 B:

Picture B:

花样编号 0  
 pattern number 0  
 长度等级 5  
 length grade 5

状态监控      花样编程      工作设置      返回  
 Status monitor    pattern programming    working setting    return

画面 C

Picture C

花样 输入长度等级 (1-5)  
 Pattern input length grade (1-5)  
 长度  
 Length  
 换针  
 Needle replacement  
 返回  
 Return

长度等级 (1-10) 调节针距的长短  
 Length grade (1-10), adjust the length of needle distance  
 请严格按以上步骤操作。  
 Please operate strictly following the above steps.



注：在按此键之前，机针一定要在针板上面，否则会把机针扭断。

Notice: Before pressing the button, the frame needle shall be above the faller; otherwise, the frame needle can be twisted off.

### 三、故障排除

#### V. Troubleshooting

##### 跳针

##### Needle skipping

1: 确保针没有变形

1. Ensure no deformation of the needle;

2: 检查摆梭机构与机针是否在正确的位置?

2: Check if the shuttle and frame needle are at the right position.

① 通过转动机器的转动方向的滑轮，将针运行到最低点，机针回升为 4MM 时，钩尖应在左边机针孔上方的平面处。

Through rotating the pulley on the machine, the needle will run to the lowest position. When the frame needle rises to 4MM, the clasp end shall at the surface above the left-sided frame needle.

② 钩尖应从两根机针的平面穿过，并且无间隙。如果有间隙，调节摆梭机构。

The clasp end shall thread through the surface of two frame needles with no gap. If there is any gap, the shuttle shall be adjusted.

3: 线和针是否都正确选择?

3. Are the thread and needle correctly selected?

缝线粗细应根据使用的机针来决定。

The thickness of thread shall be subject to the usage of frame needle.

4: 针轴的高度调整是否正确?

4. Is the length of needle axis correctly adjusted?

当机器转到最高时针尖与板距离为 23MM。机针型号: DRX3

If the machine rotates to the highest position, the distance between needle tip and faller is 23MM. The model of frame needle is DRX3.

##### 断针

##### Needle breakage

1: 针可能变形或者质量差。

1. The needle is likely to deform and is in poor quality.

2: 针的高度调整是否正确?

2. Is the length of needle correctly adjusted?

当转到最高针尖与针板距离为 23MM。机针型号为 DRX3

The distance between the highest needle tip and faller shall be 23MM. The model of frame needle is DRX3.

3: 摆梭机构与机针可能没有在正确的位置?

3. Are the shuttle and frame at the right position?

转动机器，将钩尖运行到机针时，钩尖应与机针的平面无间隙穿过，如果碰到机针

Rotate the machine and when the clasp tip runs to the frame needle, the clasp shall thread through the surface of frame needle. If it knocks the frame needle,

调节摆梭机构。

the swing mechanism shall be adjusted.

4: 针对于材料来说可能太细

4. Maybe the material is too fine.

5: 机器转速太快。

5. The machine runs too fast.

#### 缝线损坏

#### Thread damage

1. 针对于材料来说可能太细?

1. Is the material likely to be too fine?

2. 钩尖可能有毛刺? 用细金刚砂清理钩尖。

2. Maybe the clasp tip has burr? Use fine carborundum to clean the clasp tip.

3. 钩尖可能钝了? 如果钩尖变钝了, 就进行更换。

3. Maybe the clasp tip is blunt? If yes, replace it.

4. 针板可能有毛刺? 用细金刚砂清理板槽。

4. Maybe the faller has burr? Use fine carborundum to clean board slot.

5. 缝线的质量可能很差?

5. Is the thread in poor quality?

6. 检查缝线的路径?

6. Check the path of thread

#### 断线

#### Thread breakage

1. 针对于材料来说可能太细?

1. Is the material likely to be too fine?

2. 缝线的质量可能很差?

2. Is the thread in poor quality?

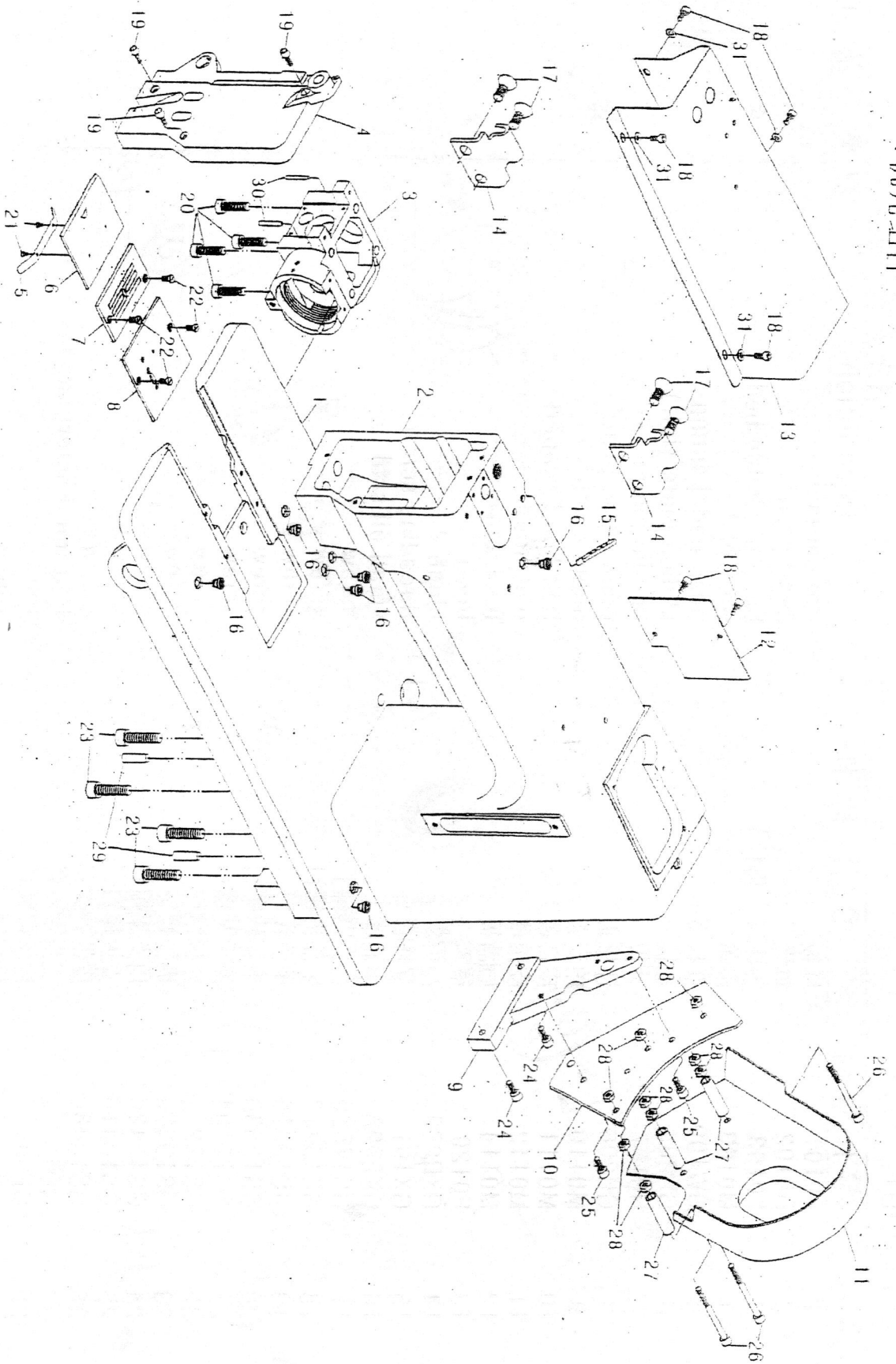
3. 检查缝线的路径?

3. Check the path of thread?

4. 钩轴承可能和缝线缠住了?

4. Maybe the hook bearing is winded by thread?

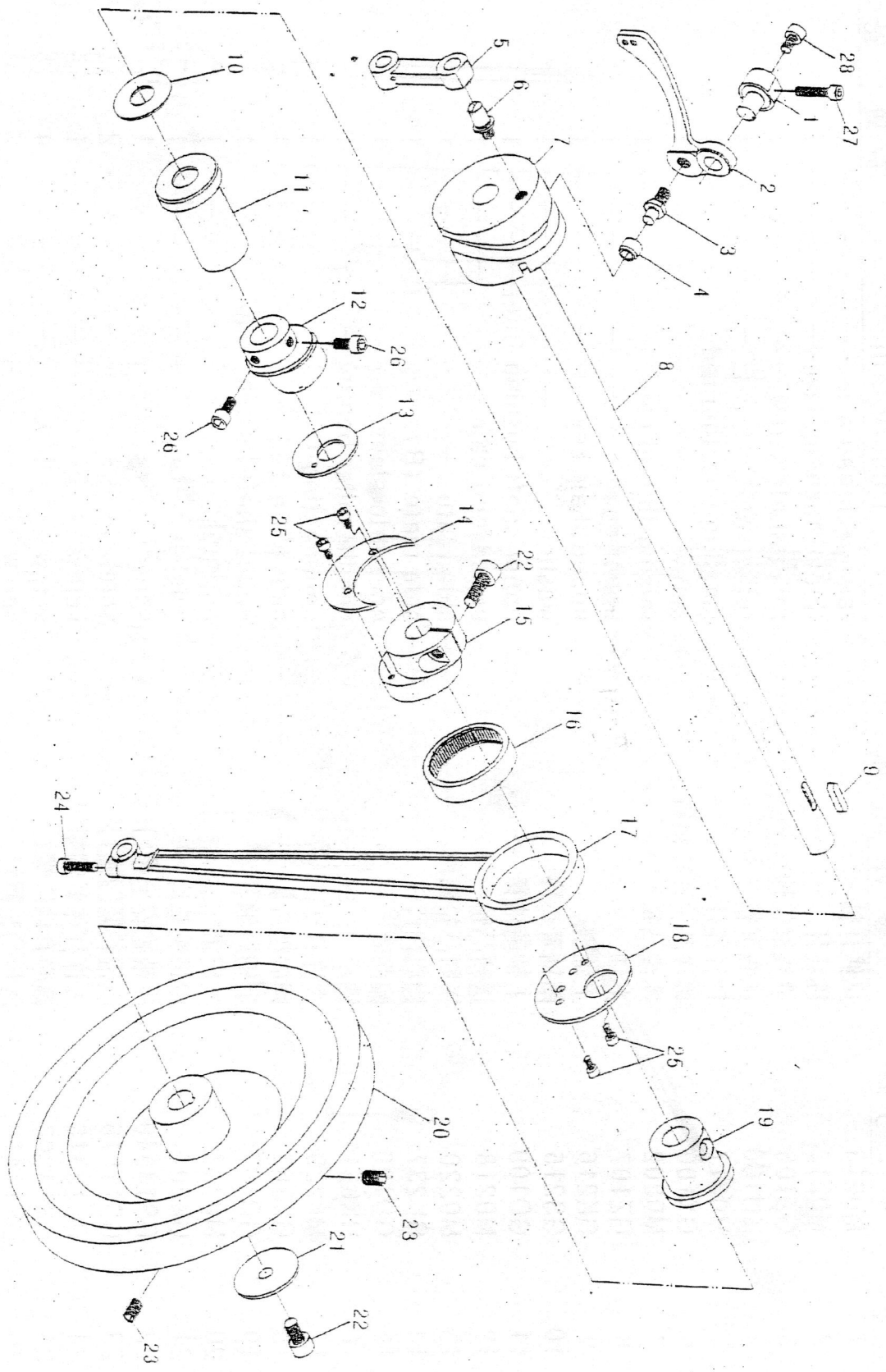
—机壳组件



# 机壳组件

序号	零件号码	零件名称	Description	数量	备注
1	F0101	底板	bottom plate	1	
2	H0102	机壳	head case	1	
3	F0103	梭床座 (箱体)	base of shuttle bed	1	
4	M0103	前盖	face plate	1	
5	GW100	推板簧	push pedal spring	1	
6	GK205	推板	sliding plate (left)	1	
7	H0107	针板	needle plate	1	
8	GK206	连接板	connection board	1	
9	M0110	角支架	angle stand	1	
10	M0111	皮带罩	belt hood support	1	
11	M0112	皮带罩	belt hood	1	
12	M0114	后盖板	back cover	1	
13	F0120	罩2	hood 2	2	
14	GXR222	合页	hinge 2	1	
15	GX101	穿线针	threading screw	7	
16	GK209A	小油堵	small oil seal	4	
17	GS17520	合页2螺钉	screw	6	
18	GS13312	后盖板螺钉	screw	3	
19	GS13316	前盖板螺钉	screw	4	
20	GS13530	小箱体螺钉	screw	2	
21	GS12104	推板簧螺钉	screw	4	
22	GS172	针板螺钉	screw	4	
23	GS13635	机壳螺钉	screw	2	
24	GS13420	角支架螺钉	screw	2	
25	GS13416	支板螺钉	screw	3	
26	GS13480	皮带罩螺钉	screw	3	
27	GO100	皮带罩管	belt hood screw saddle	9	
28	GL204	皮带罩螺母	nut	2	
29	GS105	机壳销	pin	2	
30	M0131	箱体定位销	pin	2	
31	F1142	垫圈	washer	4	

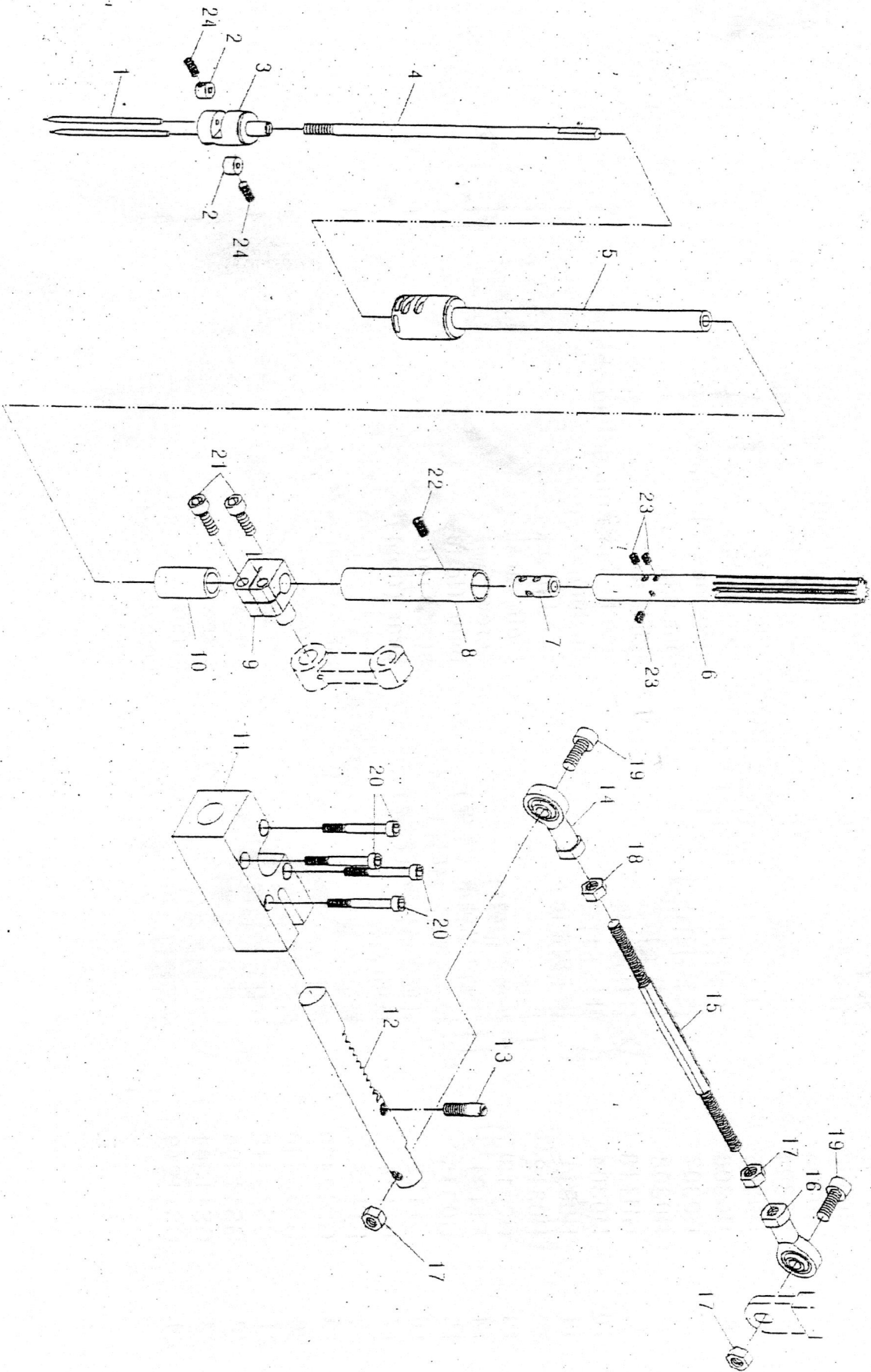
三、上轴、挑线组件



## 二. 上轴、挑线组件

序号	零件号码	零件名称	Description	数量	备注
1	M0213	挑线打轴	raising thread axle	1	
2	M0212	挑线杆	thread take-up leve	1	
3	GZ105	挑线滚轮轴	roller shaft screw	1	
4	GU100	挑线滚轮	roller shaft	1	
5	M0217	针杆连杆	small connecting rod	1	
6	GX100	挑线凸轮	screw	1	
7	M0202	挑线凸轮	raising thread cam	1	
8	GZ107	上轴	upper shaft	1	
9	GK216	上轴键	upper shaft key	1	
10	GS215	前轴套垫片	washer	1	
11	GO109	上轴前轴套	upper shaft bushing front	1	
12	M0218	送料凸轮	upper feed cam	1	
13	M0220	送料凸轮档片	side plate	1	
14	GK237	偏心档片B	side plate (B)	1	
15	GO129	偏心套	eccentric sleeve	1	
16	HK4512	轴承	needle roller bearing	1	
17	M0229	大连打体	connecting rod	1	
18	GK263	偏心档片A	side plate (A)	1	
19	GO107	上轴后轴套	upper shaft bushing rear	1	
20	M0207	大皮带轮	on turns	1	
21	GK207	皮带轮垫片	washer	1	
22	GS13540	皮带轮安全螺钉	screw	1	
23	GS11516	皮带轮紧固螺钉	screw	2	
24	GS13316	大连杆体紧固螺钉	screw	1	
25	GS13208	偏心套档片螺钉	screw	4	
26	GS13410	送料凸轮螺钉	screw	2	
27	GS13440	挑线杆轴紧固螺钉	screw	1	
28	GS13412	挑线杆轴螺钉	SCREW	1	

### 三. 针杆组件

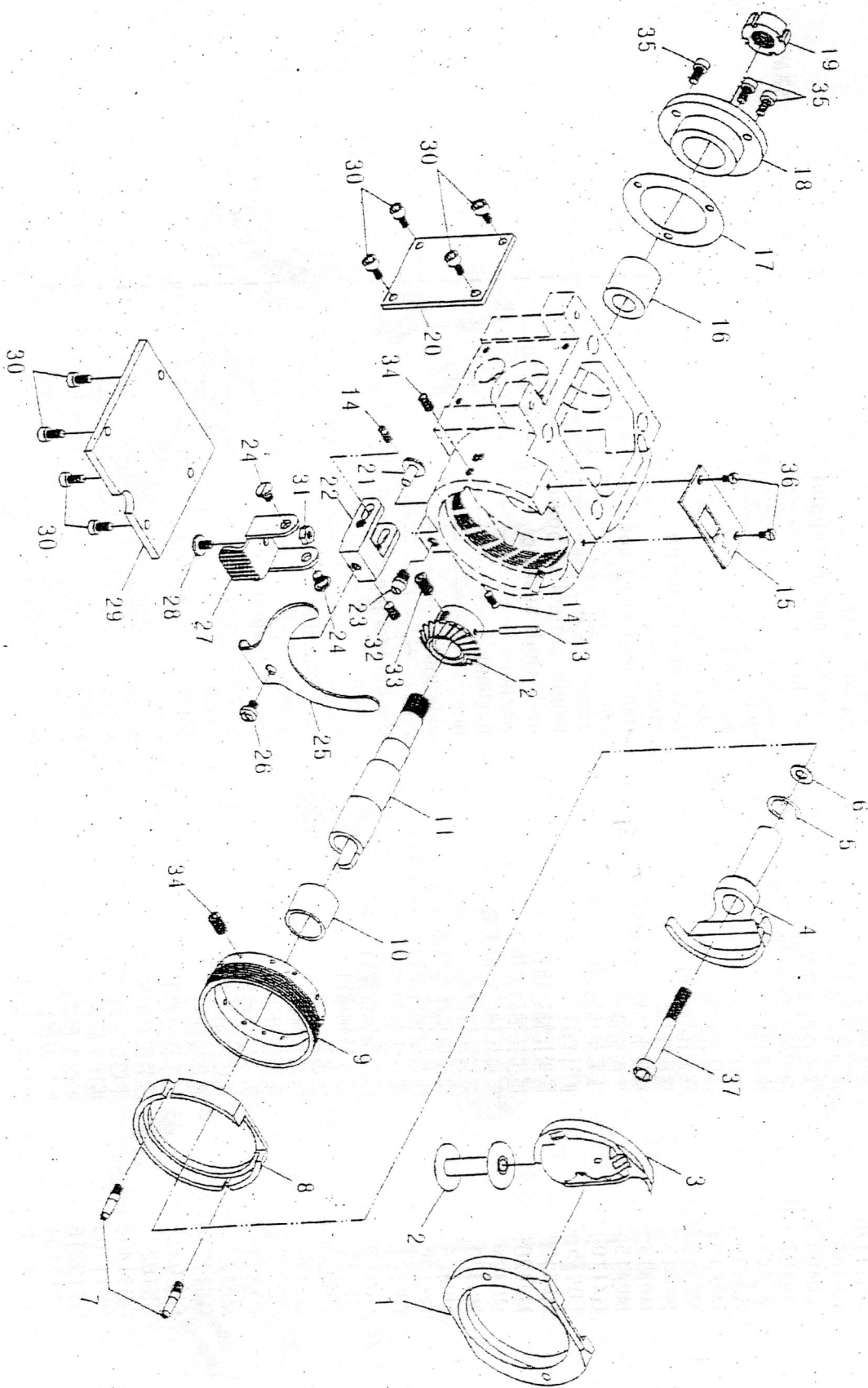


### 三. 针杆组件

序号	零件号码	零件名称	Description	数量	备注
1	DYx3	机针	needle	2	
2	H0302	针夹芯	needle clamp core	2	
3	H0303	针夹	needle clip	1	
4	H0304	针杆内芯	inner bar	1	
5	H0305	针杆	needle bar	1	
6	H0306	齿轮针杆	gear needle bar	1	
7	H0307	齿轮针杆内套	bushing	1	
8	H0308	针杆上衬套	bushing	1	
9	GH118	针杆连接轴	needle-bar connecting shaft	1	
10	M0304	针杆下衬套	bushing	1	
11	H0311	齿条固定块	fixed block	1	
12	H0312	齿条	teeth rack	1	
13	H0313	齿条定位螺钉	screw	1	
14	F1121	杆端关节轴承(左旋)	bear (left)	1	
15	H0315	反扣螺杆(转针)	screw rod	1	
16	F1122	杆端关节轴承(右旋)	bear (right)	1	
17	F1124	螺母(右旋)	nut	1	
18	F1123	螺母(左旋)	nut	3	
19	GS13420	螺钉	screw	1	
20	GS13240	齿条固定块螺钉	screw	2	
21	GS13316	针杆连接轴螺钉	screw	4	
22	GS11306	针杆上衬套螺钉	screw	2	
23	GS11204	针杆内芯螺钉	screw	1	
24	GS11210	顶针螺钉	screw	3	
				2	



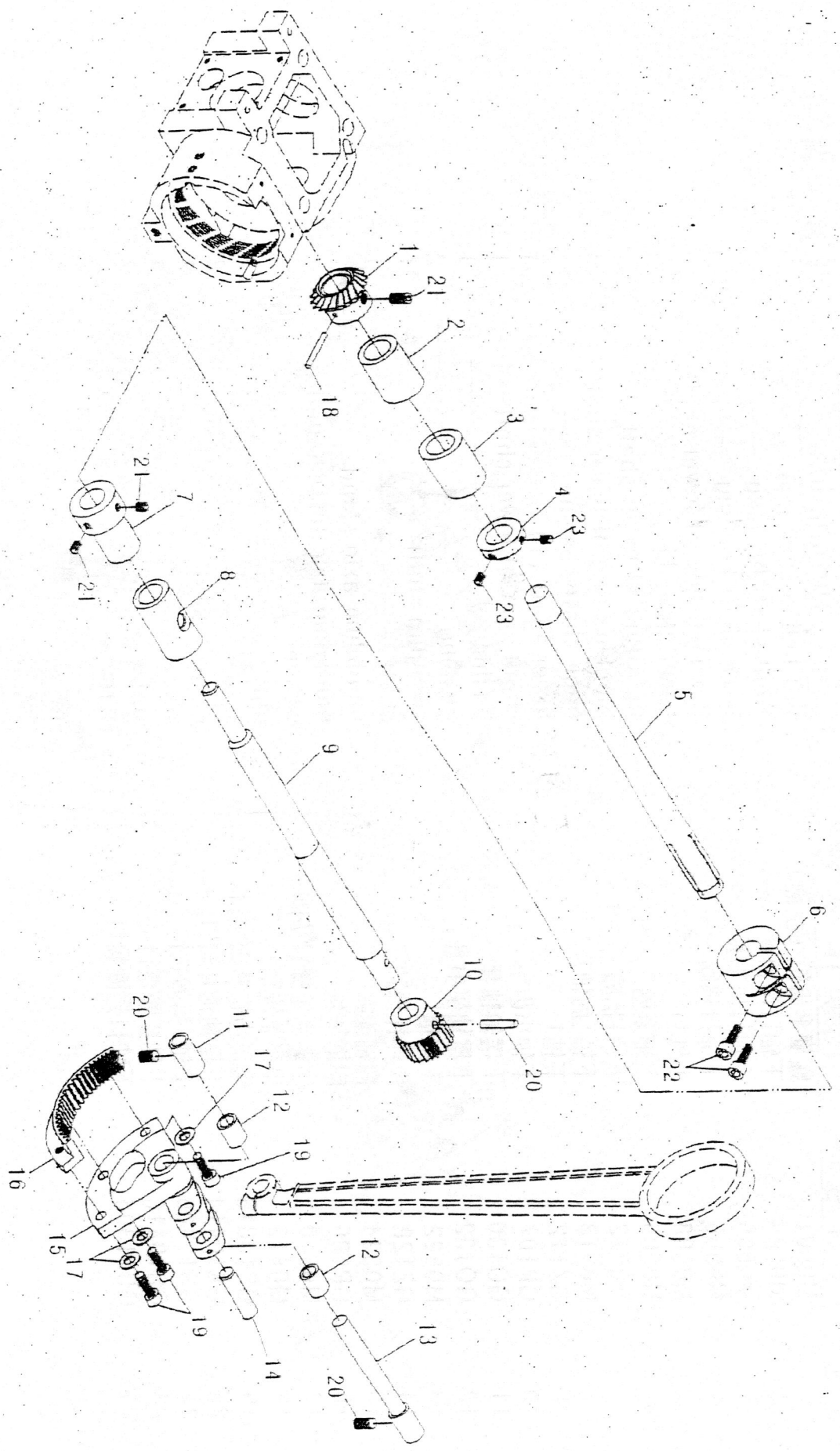
# 四. 梭轴组件



### 四.梭轴组件

序号	零件号码	零件名称	Description	数量	备注
1	GN118	梭床盖	bobbin bed cover	1	
2	GN116	梭心	bobbin	1	
3	GN111/9	摆梭托	shuttle hook	1	
4	M0405	摆梭托限位垫片	swinging shuttle support	1	
5	M0406	摆梭托限位垫片	washer	3	厚: 0.2, 0.3, 0.5 选配
6	M0407	限位螺钉	washer	1	
7	M0408	梭床螺钉	screw	1	
8	GN110	梭床	bobbin bed	2	
9	M0410	梭床定位套	shuttle set	1	
10	M0412	摆梭托前轴套	front shaft bushing	1	
11	M0413	摆梭托轴	shaft	1	
12	M0414	摆梭托伞齿轮 (右旋)	right helix bevel gear	1	
13	M0415	伞齿轮锥销	pin	1	
14	GX110	压紧架转轴螺钉	screw	2	
15	F0415	护针挡片	needle protecting board	1	
16	M0419	摆梭托后轴套	back shaft bushing	1	
17	M0420	摆梭托后大垫	washer	1	
18	M0421	摆梭托后定位大套	bushing	1	
19	M0423	摆梭托轴螺母	nut	1	
20	M0424	梭床箱体左侧盖	side plate	1	
21	GX108	压紧架轴位销钉	pin	1	
22	GK241	梭床压紧架	bobbin bed press stand	1	
23	GX109	压紧架轴位螺钉	screw	1	
24	GX112	板手转轴螺钉	screw	2	
25	GW111	压盖簧	ring-pressing spring	1	
26	GX117	压盖簧螺钉	screw	1	
27	GK243	压盖簧板手	press slang spanner	1	
28	GX113	板手轴位螺钉	screw	1	
29	M0437	梭床箱体底座板	cover	1	
30	GS13210	底盖板螺钉	screw	8	
31	GL203	板手轴位螺母	nut	1	
32	GS102	压紧架定位螺钉	screw	1	
33	GS11406	伞齿轮紧固螺钉	screw	1	
34	GS11306	梭床伞齿轮紧固螺钉	screw	1	
35	GS13216	梭床定位大套螺钉	screw	2	
36	GS12104	护针板螺钉	screw	3	
37	GS13460	护针板螺钉	screw	2	

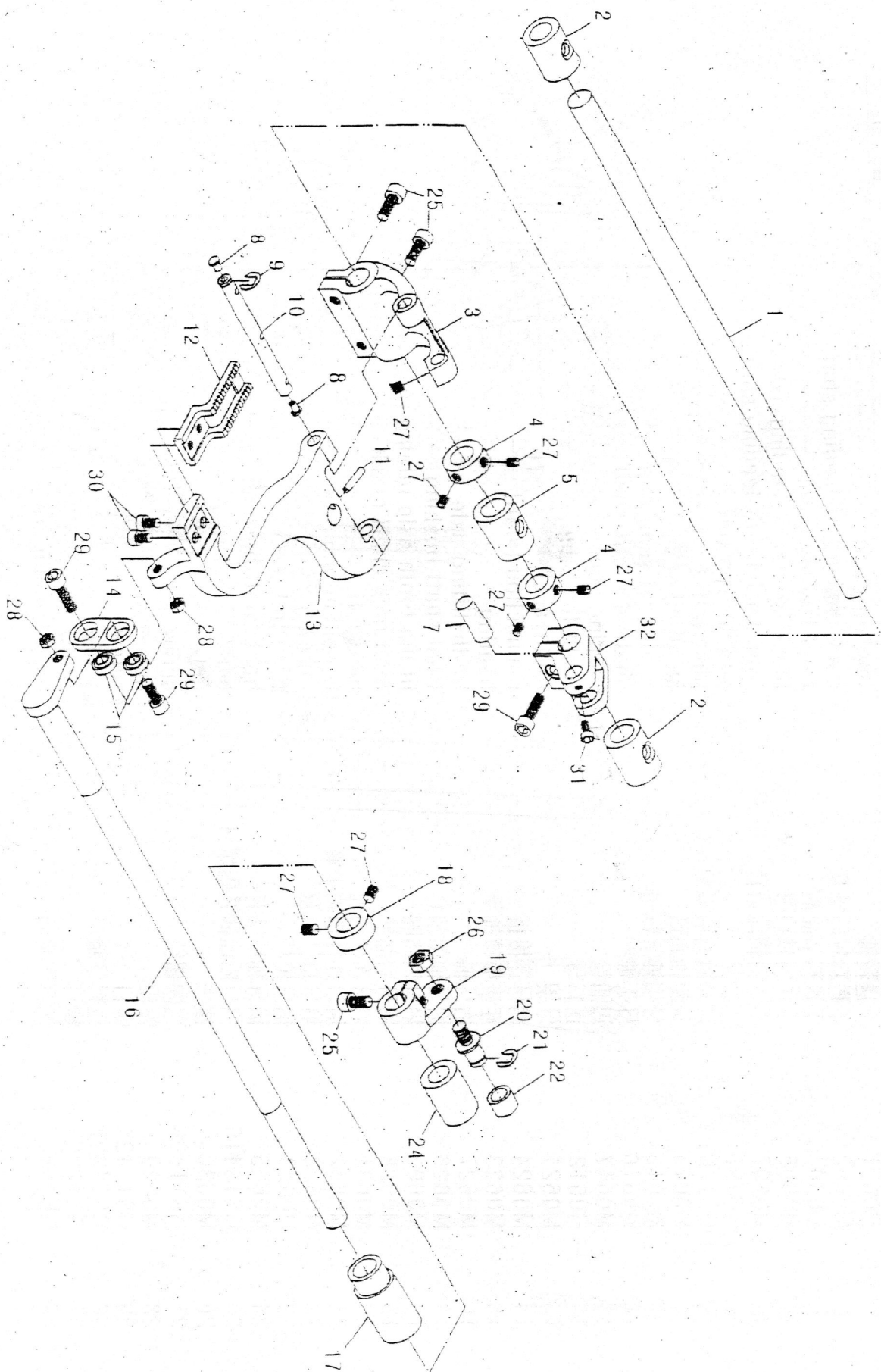
# 五. 下轴、摆轴组件



## 五. 下轴、摆轴组件

序号	零件号码	零件名称	Description	数量	备注
1	M0501	螺旋伞齿轮 (左旋)	left helix bevel gear	1	
2	M0504	下轴前轴套	front shaft bushing	1	
3	M0505	下轴后轴套	back shaft bushing	1	
4	M0506	下轴挡圈	blocking ring of lower shaft	1	
5	M0508	下轴	lower shaft II	1	
6	M0509	下轴紧圈	tight ring of lower shaft	1	
7	M0512	下轴挡圈	blocking ring of lower shaft	1	
8	M0513	下轴后轴套	back shaft bushing	1	
9	GZ112	下轴	lower shaft (1)	1	
10	GP107	下轴小齿轮	small gear of lower shaft	1	
11	GO130	下摆轴轴套	bushing	1	
12	GO132	下摆轴架小套	bushing	2	
13	M0522	下摆轴	swinging shaft	1	
14	GZ128	大连杆销轴	shaft	1	
15	M0524	摆轴架	pendulum axle stand	1	
16	GP106	扇形齿轮	pendulum axle fan-shaped gear	1	
17	M0519	扇形齿轮螺钉垫圈	washer	3	
18	M0415	小齿轮锥销	pin	2	
19	GS13318	扇形齿轮紧固螺钉	screw	3	
20	GS10414	下摆轴轴套螺钉	screw	2	
21	GS11406	下轴挡圈螺钉	screw	3	
22	GS13416	下轴紧圈螺钉	screw	2	
23	GS11306	下轴挡圈螺钉	screw	2	

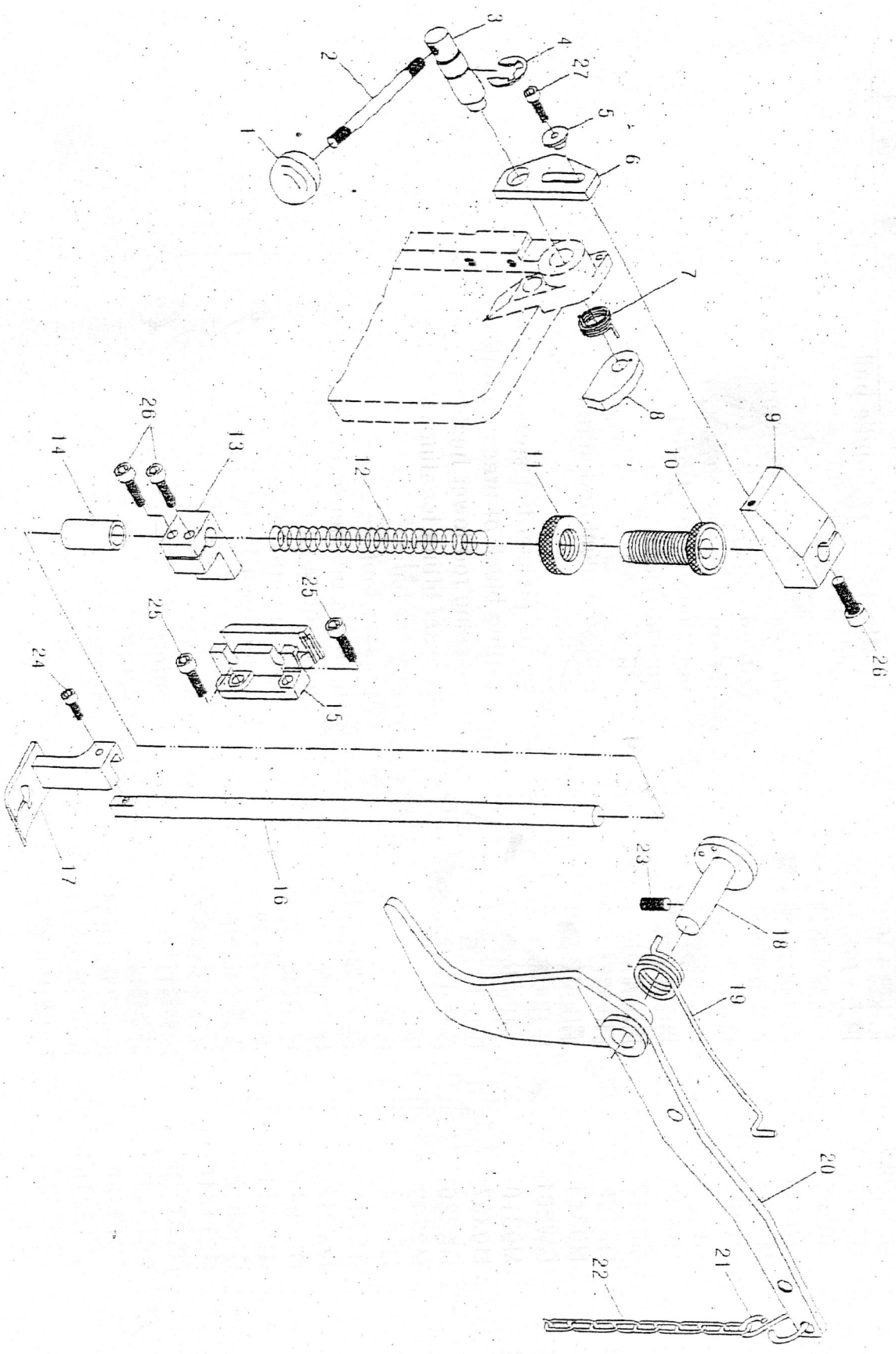
# 六. 拾牙、送料组件



## 六. 拾牙、送料组件

序号	零件号码	零件名称	Description	数量	备注
1	M0601	下送料轴	feeding shaft	1	
2	M0602	下送料轴后轴套	back bushing of feeding shaft	2	
3	M0604	下送料轴前曲柄	front feeding crank	1	
4	M0605	下送料轴挡圈	blocking ring of feeding axle	2	
5	M0607	下送料轴前轴套	front bushing of feeding shaft	1	
6	GH125	大牙叉	straddle type rod	1	
7	GZ128	送料后曲柄销轴	pin shaft	1	
8	M0614	牙架轴油堵	small oil seal	2	
9	M0615	牙架轴卡簧	E-shaped snap ring	1	
10	M0616	牙架轴	shaft of tooth-shelf	1	
11	M0617	过油管	oil pipe joint	1	
12	H0612	送料牙	tooth feed dog	1	
13	M0621	牙架	tooth-shelf	1	
14	M0624	拾牙连接板	connection board	1	
15	M0623	连接板轴承	bearing	2	
16	M0627	拾牙轴	tooth-lifting axle	1	
17	M0626	拾牙轴前轴套	front shaft bushing	1	
18	M0605	拾牙轴挡圈	lifting tooth axle retaining ring	1	
19	M0628	拾牙后曲柄	feed rack shaft crank	1	
20	M0631	拾牙连杆销轴	pin shaft	1	
21	M0632	拾牙连杆销轴卡簧	E-shaped snap ring	1	
22	H0622	拾牙连杆衬套	bushing	1	
23	H0623	拾牙拉杆	front rod	1	
24	M0625	拾牙轴后轴套	back shaft bushing	1	
25	GS13416	拾牙后曲柄紧固螺钉	screw	3	
26	M0630	螺母	nut	1	
27	GS11406	挡圈螺钉	screw	7	
28	M0620	螺母	nut	2	
29	GS13420	螺钉	screw	3	
30	GS13308	送料牙螺钉	screw	2	

七、压杆、拾压脚组件

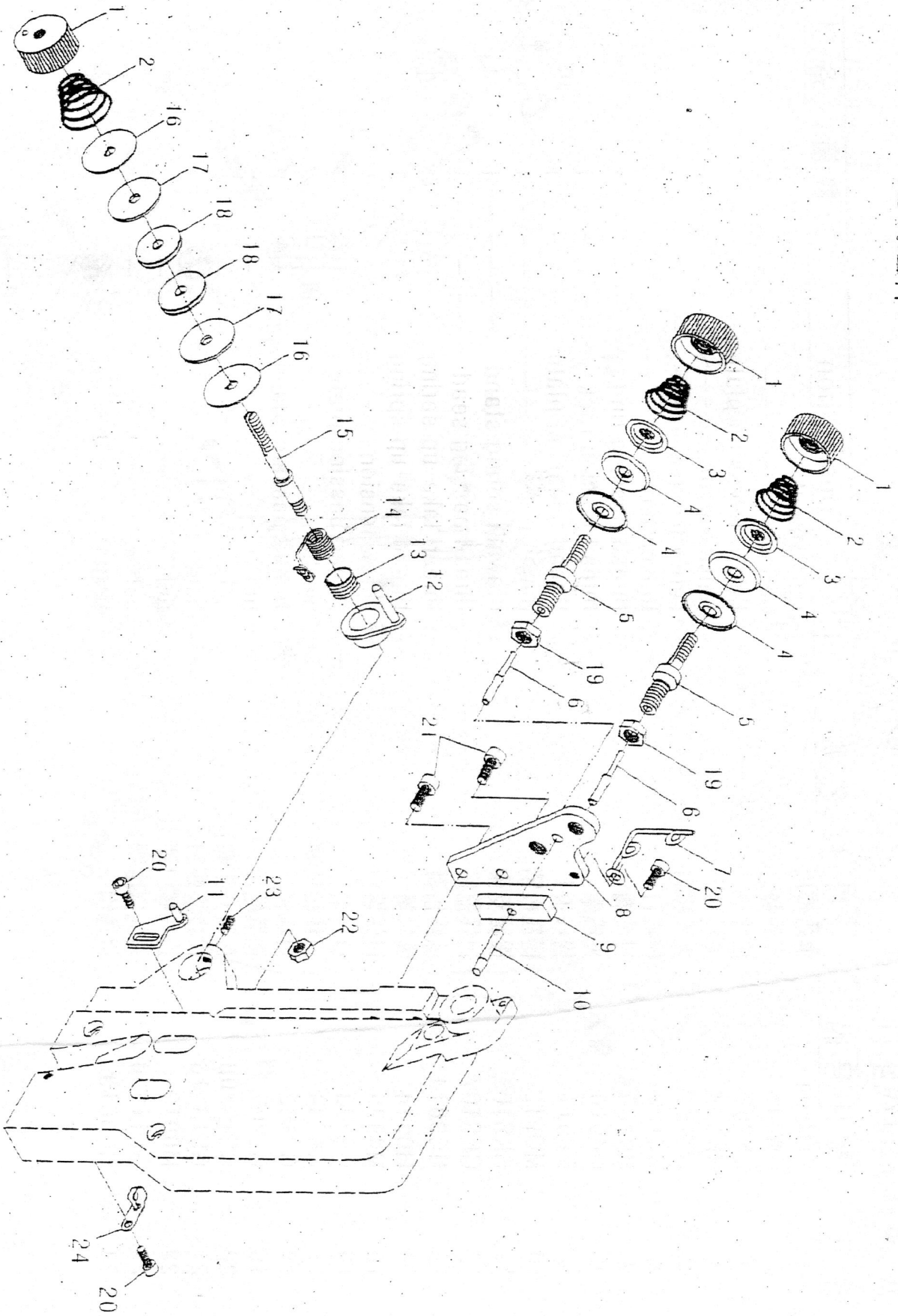


## 七. 压杆、抬压脚组件

序号	零件号码	零件名称	Description	数量	备注
1	GZS139	抬压脚手柄球	uplifting presser handle ball	1	
2	GZ138	提升手柄杆	uplifting handle bar	1	
3	M0805	抬压脚手柄轴	shaft	1	
4	GW211	抬压脚手柄轴卡簧	uplifting handle axle jump ring	1	
5	M0804	松线板连接套	thread loosing	1	
6	M0803	松线板2	thread releasing plate (2)	1	
7	GW217	提升压脚簧	uplifting presser spring	1	
8	M0802	抬压脚偏心片	eccentric slice	1	
9	M0312	抬压脚顶块	block	1	
10	GZ125	调压螺钉	pressure regulated screw	1	
11	M0314	调压锁紧螺母	nut	1	
12	GW201	压杆大簧	spring presser bar spring	1	
13	M0310	压杆定位块	setting block of pressing rod	1	
14	M0307	压杆下衬套	pressing rod lower bushing	1	
15	GK226	压脚升级定位滑道	presser lifing locating slideway	1	
16	M0309	压杆	presser bar	1	
17	H0817	压脚	presser foot	1	
18	GE141	提升压脚杠杆轴	uplifting presser lever shaft	1	
19	GW212	杠杆扭簧	lever torsional spring	1	
20	GK264	提升压脚杠杆	uplifting presser lever	1	
21	GD0911	提升拉钩	lifting lever finger	1	
22	GD0912	压脚提升拉链	presser lifting bar	1	
23	GS11410	杠杆轴紧固螺钉	screw	1	
24	GS13210	压脚螺钉	screw	1	
25	GS13325	滑道螺钉	screw	2	
26	GS13320	定位块紧固螺钉	screw	2	
27	GS13216	杠杆轴紧固螺钉	screw	1	



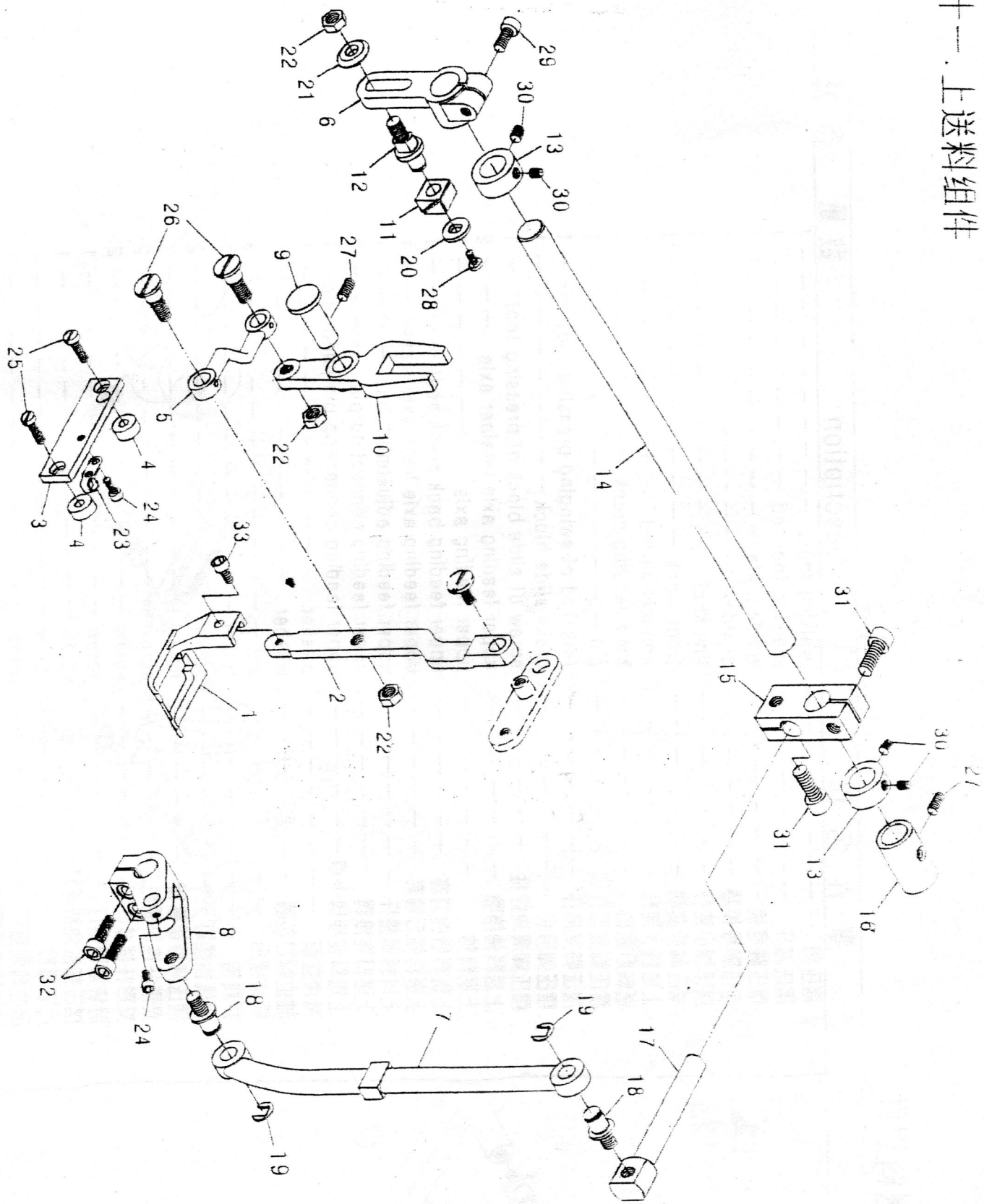
八、夹线、过线组件



### 八. 夹线、过线组件

序号	零件号码	零件名称	Description	数量	备注
1	GLS204	夹线螺母	tension nut	3	
2	GW115	夹线簧	spring	3	
3	GK232	松线板	thread releasing plate	2	
4	GK123	夹线板	tension plate	4	
5	GZ126	夹线螺钉	screw tension	2	
6	GX106	松线钉	loosen bolt	2	
7	M0408	过线圈	thread passing ring	1	
8	M0910	夹线架	thread tension rack	1	
9	M0911	松线板 1	thread releasing plate	1	
10	M0912	松线板销	pin	1	
11	GKS108	拨簧支架	drawing spring stand	1	
12	GKS107	过线器座	thread passing seat	1	
13	GC0814	挑线扭簧	thread take-up spring	1	
14	H0914	挑线簧	thread take-up spring	1	
15	M0925	过线螺钉	screw tension	1	
16	GK233	过线板	thread passing plate	2	
17	GK234	过线轮毡圈	washer	2	
18	GP102	过线轮	thread passing wheel	2	
19	GL205	锁紧螺母	nut	2	
20	GS13208	拨簧支架螺钉	screw	2	
21	GS13316	松线架螺钉	screw	2	
22	M0913	过线螺钉锁母	nut	1	
23	GS11206	过线器座固定螺钉	screw	1	
24	GC0819	拦线钩	finger	1	

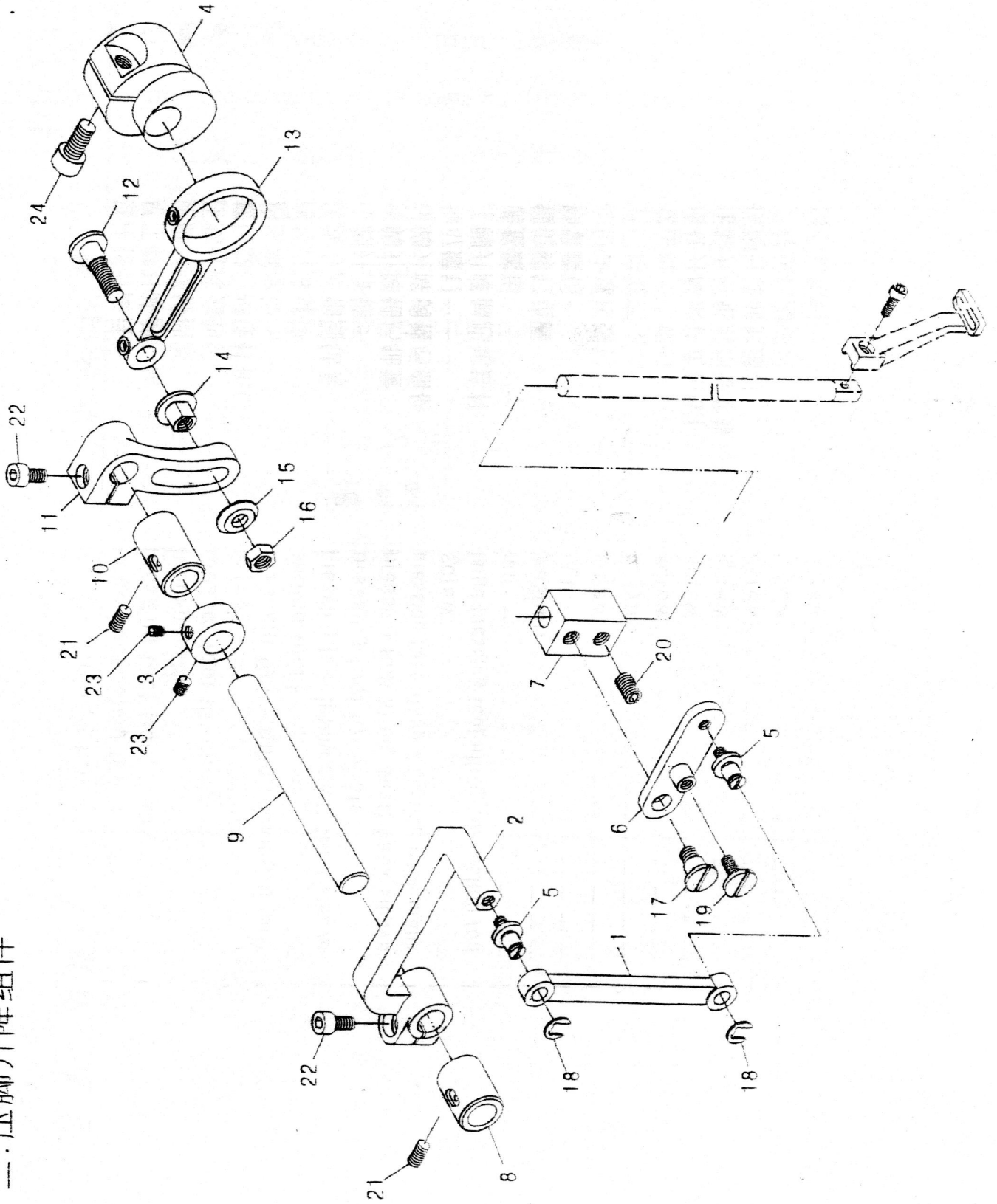
十一. 上送料组件



# 十一 上送料组件

序号	零件名称	Description	数量	备注
1	摆压脚	walking foot	1	
2	摆压脚杆	walking foot rod	1	
3	摆压脚导板	guide plate	1	
4	摆压脚板垫	cushion	2	
5	摆压脚小连杆	link shaft	1	
6	摆压脚前曲柄	front crank	1	
7	上送料大连杆	connecting rod	1	
8	送料后曲柄	back feeding crank	1	
9	摆压脚叉形杆销	pin	1	
10	摆压脚叉形杆	fork-rod of swinging pressing foot	1	
11	摆压脚滑块	crank slide block	1	
12	摆压脚滑块螺柱	screw of slide block of pressing foot	1	
13	上送料轴挡圈	upper feeding axle retainer axle	2	
14	上送料轴	upper feeding axle	1	
15	上送料后曲柄座	upper feeding back crank seat	1	
16	上送料轴后轴套	upper feeding axle back axle sleeve	1	
17	上送料调整杆	upper feeding adjustment bar	1	
18	上送料连接销	upper feeding connecting pin	2	
19	上送料连接销卡簧	upper feeding connecting pin jump ring	1	
20	滑块垫圈	washer	1	
21	轴位螺钉垫圈	washer	1	
22	锁紧螺母	nut	3	
23	拦线钩	finger	1	
24	拦线钩螺钉	screw	2	
25	摆压脚导板螺钉	screw	2	
26	叉形杆连接螺钉	screw	2	
27	叉形杆销紧螺钉	screw	2	
28	滑块紧固螺钉	screw	1	
29	摆压脚前曲柄螺钉	screw	1	
30	挡圈螺钉	screw	4	
31	后曲柄座螺钉	screw	2	
32	送料后曲柄螺钉	screw	2	
33	摆压脚螺钉	screw	1	

# 十二. 压脚升降组件



## 十二. 压脚升降组件

序号	零件名称	Description	数量	备注
1	摆压脚升降连杆	large connecting rod	1	
2	摆压脚升降前曲柄	pressing foot front crank	1	
3	压脚升降轴挡圈	blocking ring	1	
4	压脚升降偏心轮	presser foot lift cam	1	
5	摆压脚升降连杆螺钉	screw	2	
6	抬压脚摇板	pressing foot lifting rocking board	1	
7	压杆升降滑块	sliding block	1	
8	压脚升降轴前轴套	pressing foot lifting shaft front sleeve	1	
9	压脚升降轴	pressing foot lift shaft	1	
10	压脚升降轴后轴套	pressing foot lifting shaft back sleeve	1	
11	压脚升降调整后曲柄	pressing foot lifting adjusting back crank	1	
12	轴位螺钉	screw	1	
13	压脚升降偏心轮连杆	large pressing foot lifting connecting rod	1	
14	调整螺母	nut	1	
15	轴位螺钉垫圈	washer	1	
16	锁紧螺母	nut	1	
17	定位块摇板螺钉	screw	1	
18	开口挡圈	E-type	2	
19	摆压脚支点螺钉	screw	1	
20	压杆升降滑块定位螺钉	screw	1	
21	压脚升降轴前后轴套螺钉	screw	2	
22	压脚升降曲柄螺钉	screw	2	
23	升降轴挡圈螺钉	screw	1	
24	偏心轮螺钉	screw	1	

## 技 术 参 数

压脚提升高度：自动台压脚10mm

Height of pressing-foot: 10mm

单针针位宽度：~~0.8mm-1.0mm-1.2mm~~

Single-needle distance: ~~8mm-1.0mm-1.2mm~~

双针针位宽度：~~8mm-1.0mm-1.2mm~~

Two-needle distance: ~~8mm-1.0mm-1.2mm~~

送料针距长度最大：10mm

Length of needle that carries the material: 10mm

机针：Dy x3 130#--250#

Needle: Dy x3 130#--250#

电源：220v-550w最高速度350转/分

Power supply: 220v-550w, maximum speed 350 circles/min

毛重：180kg

Net weight: 180kg

包装尺寸：107x80x135cm(长x宽x高)

Package size: 107x80x135cm