



# **SIMAC 1015**

## **MANUALE DI ISTRUZIONE E RICAMBI**

### 1.UNPACKING MACHINE

Unpack machine from its shipping box,making certain that you remove from box all component parts and accessories.

Do not disorder any packing material without prior scrutiny as to contents.

Clean from machine all greases,dirt,or dust.

Pay particular attention to area around looper mechanism and looper.

### 2.HANDWHEEL ROTATION AND SPEED

Turn handwheel only in direction away from operator for clockwise rotation, Be sure that motor driver is wired to obtain the same clockwise rotation. However,the recommended operating speed of a brand new machine is 1,200 stitches per minute,After a breaking-in period of several weeks and after the operator has become skilled in the operation of the machine,the speed can be increased upto 2,200stitches per minute.

### 3.OILING AND MAINTENANCE(Fig1&Fig2)

Drop oil of good quality at all points shown on the oiling chart Fig1 & Fig2 before operating machine every day.After oiling wipe machine carefully to avoid soiling the material.Be sure to depress knee lifter preventing damage to the needle and the feed dog and to operate machine without materials under the presser foot for 2 or 3 minutes.

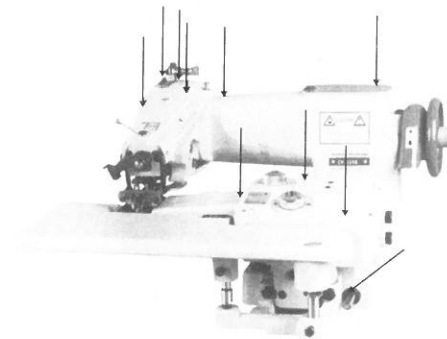


Fig1

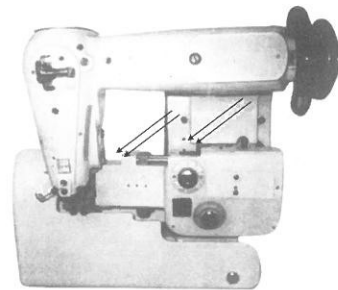
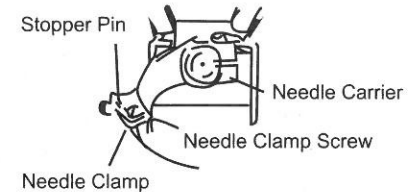


Fig2

### 4.REPLACING NEEDLE(Fig.3)

Turn handwheel away from operator(clockwise)until needle reaches the end of its return stroke(Extreme left position),and adjust Disc Adjusting Dials in red and blue to least amount of penetration(Turn clockwise)

Remove old or defective needle by loosening needle clamp screw Insert new needle into seat in Needle Clamp as far as it will go.Then,tighten needle clamp screw.



Turn handwheel slowly away from operator and observe movement of needle.The curved portion of the needle should bear slightly on the Needle Guide Groove in the left hand part of the Presser Foot. Always replace bent or blunt needles.They affect the satisfactory operation of the machine,

### 5.THREADING MACHINE

See threading chart Fig3,Fig4 and Fig5

Fig.4

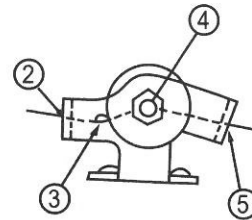


Fig.3

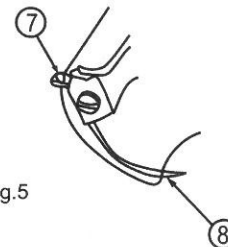
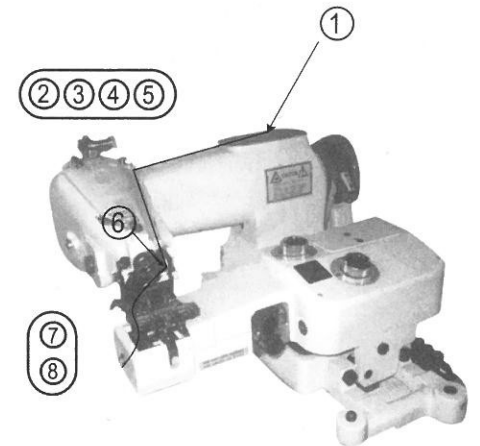
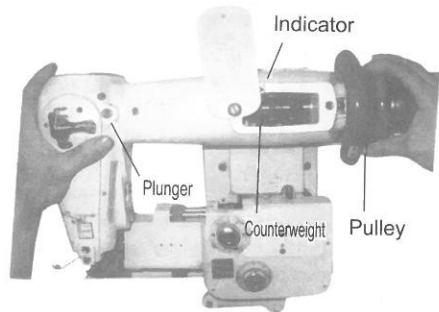


Fig.5

## 6. STITCH LENGTH REGULATION

To adjust length of stitch, turn handwheel away from operator and at the same time depress the plunger located on top of the machine arm. As operator turns the handwheel, the plunger is felt to drop into a recess within the mechanism inside the machine.

With the plunger remaining depressed into this recess continue turning the hand wheel either forward or backward until the desired number (3 to 8) will come into view in the small window to the left of the handwheel.



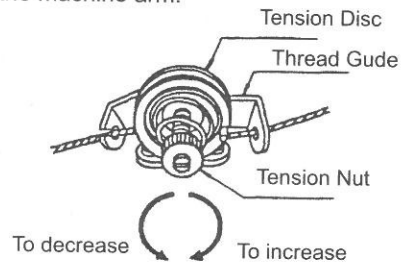
Each number represents a certain stitch as follow

Number appearing on Indicator	3	4	5	6	7	8
Stitch Length(m/m)	8.5	6	5	4	3.5	3

A few trials with varied stitch lengths on different kinds of material will prove to be best method for selection

## 7. ADJUSTMENT OF THREAD TENSION

Different kinds and weights of material and the various sizes of thread require respective thread tensions. Thread tension is regulated by turning the Tension Nut located at the top the machine arm.



To increase thread tension, turn the nut away from you (clockwise).  
To decrease the tension, turn the nut towards you (counter-clockwise).  
Do not turn, tighten or tension more than about one quarter turn at one time.  
Test for results and readjust, if necessary.

## 8. INSERTING THE WORK AND STARTING TO SEW

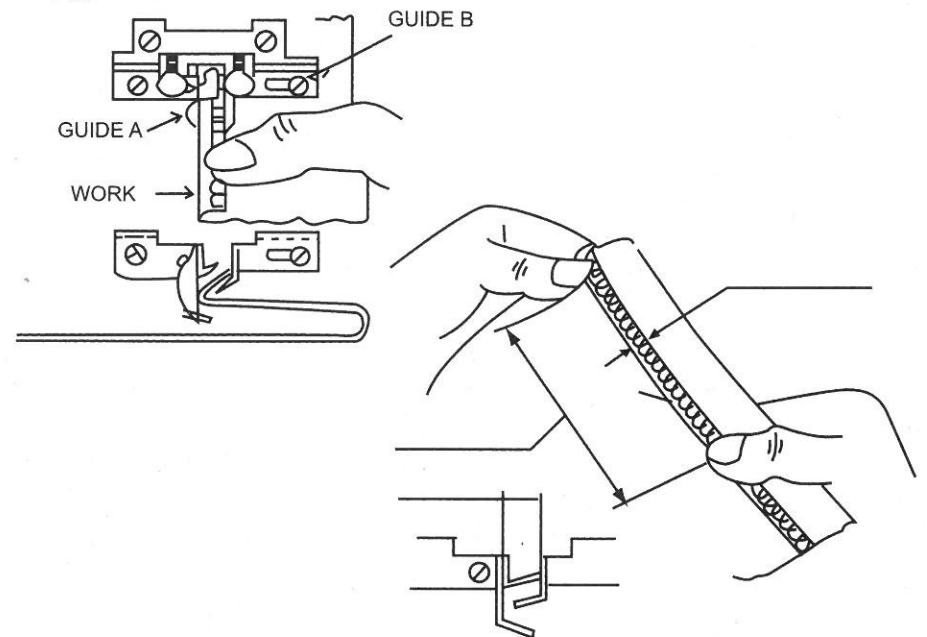
Turn handwheel clockwise until needle reaches the end of its return stroke (extreme left hand position).

Fold the material as Fig 8 and depress knee lifter. This causes the Feed Plate to go downward to create a clearance between the presser Foot and the Feed Plate.

Insert the material the clearance just opened in such a manner that edge of the material is along side the edge of Guide (A) of the presser Foot (see fig 8)

When the material is proper position, completely release the knee lifter. Get the machine started slowly and watch the material pass edge guide rather than to observe the action of the needle. In case of the material with piped hem, detach guide B, and insert the material as manner as above.

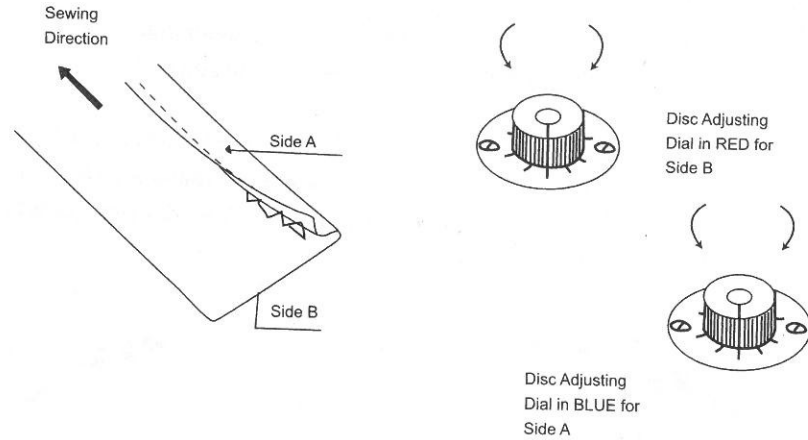
Fig.8



### 9. ADJUSTMENT OF NEEDLE PENETRATION

Desirable penetration can be obtained by Disc Adjusting Dial of blue colour for side A, and red colour for side B.

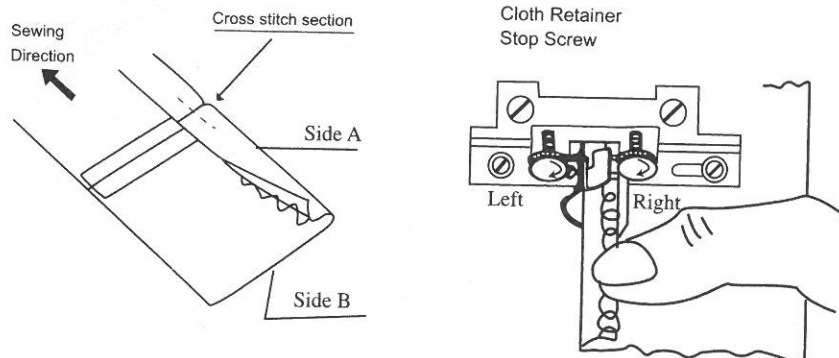
Turn Disc Adjusting Dials clockwise for less penetration and lockwise for more penetration



### 10. ADJUSTMENT OF NEEDLE PENETRATION ON CROSS SEAM SECTION

It is required to regulate the pressure of the Cloth Retainer to sew cross stitch section by adjusting Cloth Retainer Stop Screw of left side for side A, and right side for side B.

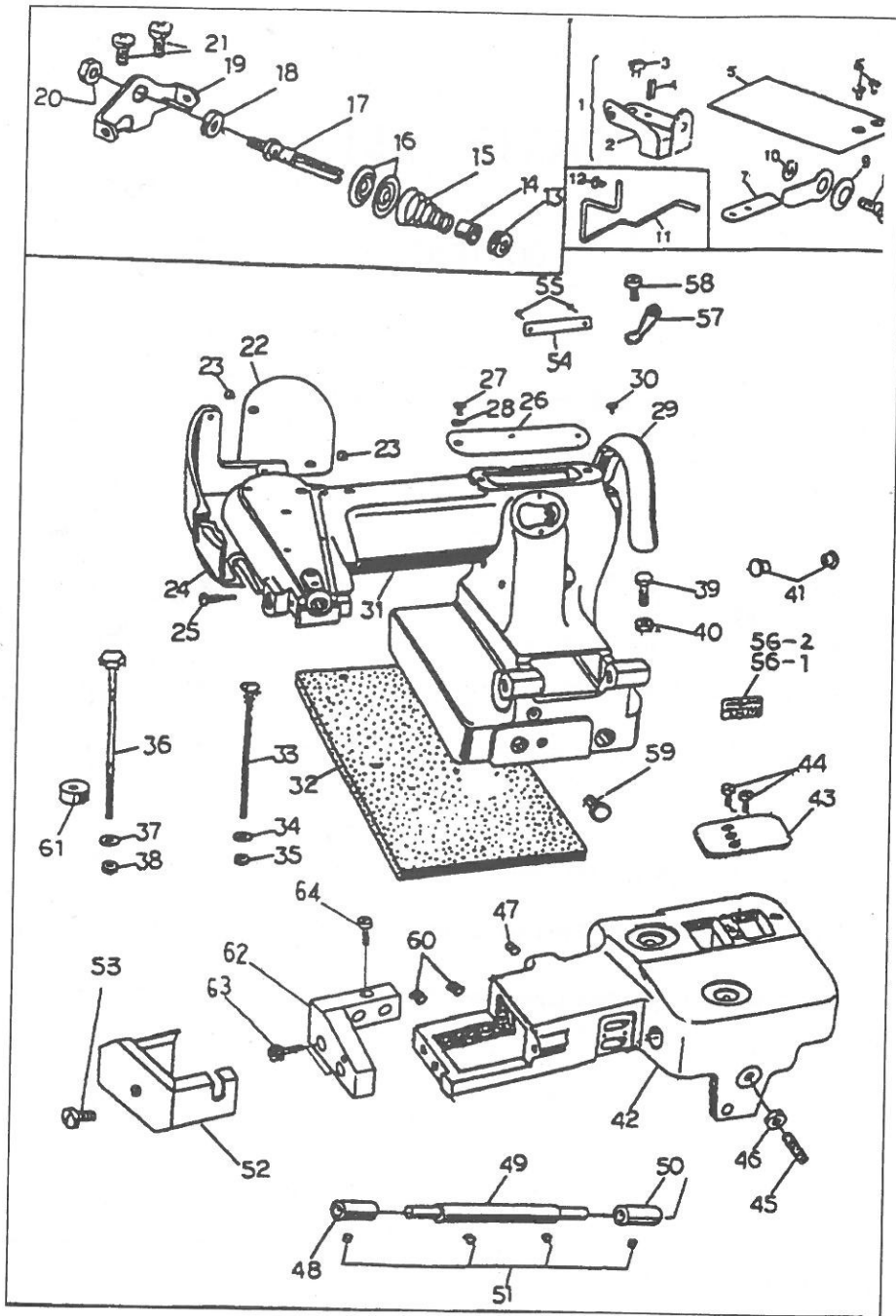
Turn Cloth Retainer Stop Screw clockwise for less penetration, and counter clockwise for more penetration.



## PARTS LIST

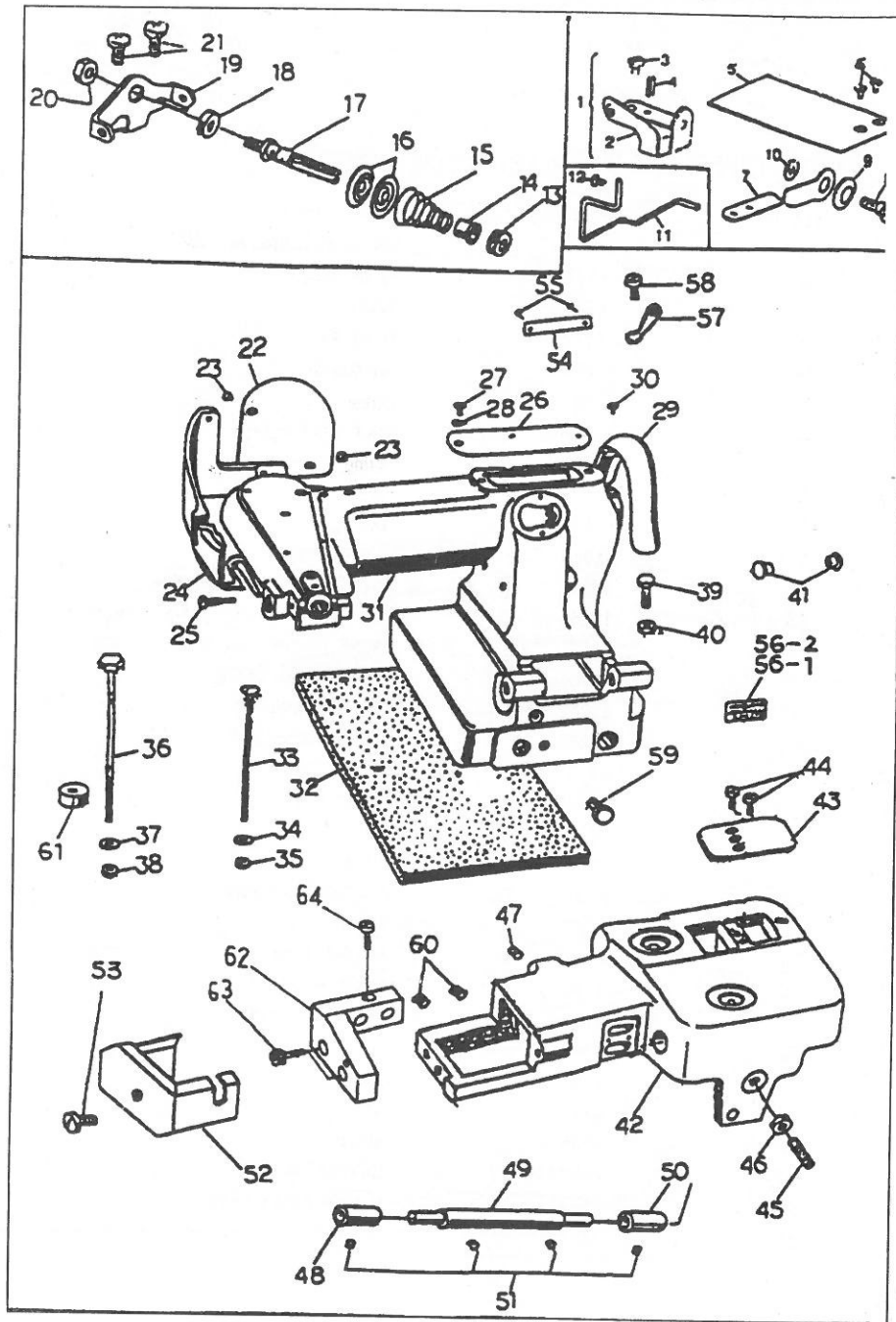
### CONTENTS

Machine Frame, Thread Tension & Eye Guard Components .....	7
Main Shaft Mechanism Component .....	11
Needle Carrier & Feed Dog Mechanism Components .....	13
Needle Carrier & Feed Dog Mechanism Components .....	15
Needle Carrier & Feed Dog Mechanism Components .....	17
Feed Plate Disc Adjusting Dial & Dial Cover .....	19
Spring Adjusting for Ridge Forming Disc Mechanism Components .....	21
Ridge Forming Disc for Right Mechanism Components .....	23
Ridge Forming Disc for Left Mechanism Components .....	25
Knee Press & Knee Press Shaft Parts Components .....	27
Work Plate & Belt Cover Parts Components .....	29
Standard Accessories .....	31



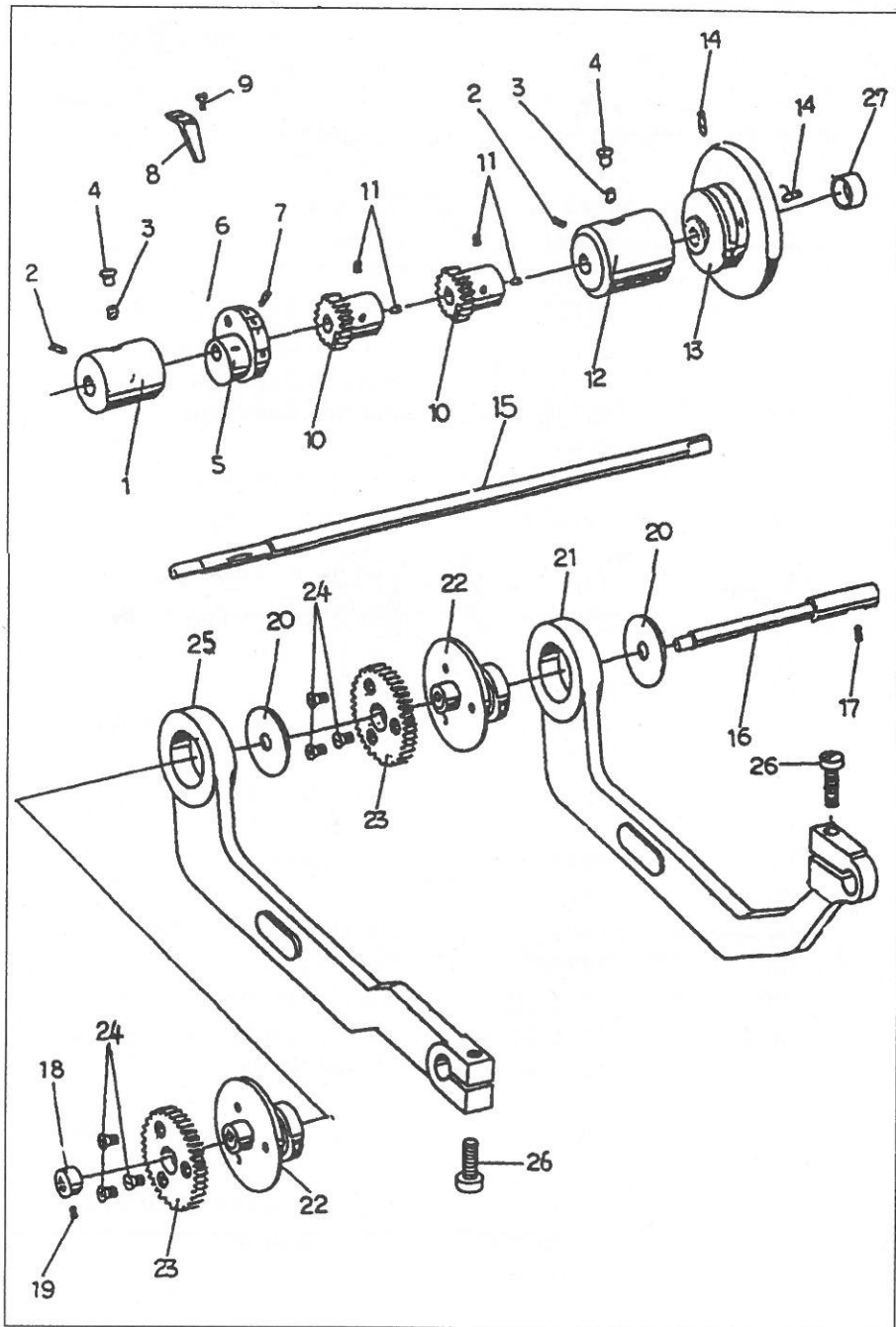
MACHINE FRAME THREAD TENSION & EYE GUARD COMPONENTS

REF No.	Parts No.	Description
1	S-1170-C	Eye Guard Set(Ref.No.2-10)
2	11273-1C	Thread Guide
3	113-B	Screw
4	8147	Spring Pin
5	11275	Eye Guard
6	8333	Screw
7	11274-A	Eye Guard Bracket
8	11615	Spring
9	4140-A	Spring
10	6083	Washer
11	11566	Finger Guard
12	5233	Screw
13	11285	Nut
14	5273	Ratchet
15	11261-A	Thread Tension Spring
16	11262	Thread Tension Disc
17	11263	Thread Tension Staff
18	4215	Washer
19	21095	Thread Guide
20	4070	Nut
21	0144008	Screw
22	4137	Arm Side Cover Plate
23	5227	Screw
24	4139	Arm Side Cover
25	4144	Screw
26	4138-C	Arm Top Cover Plate
27	4141	Screw
28	4140-A	Spring
29	4143	Belt Cover
30	4048-A	Screw
31	AM-1190	Machine Frame
32	21723	Machine Base Oil Felt
33	AC-15	Screw



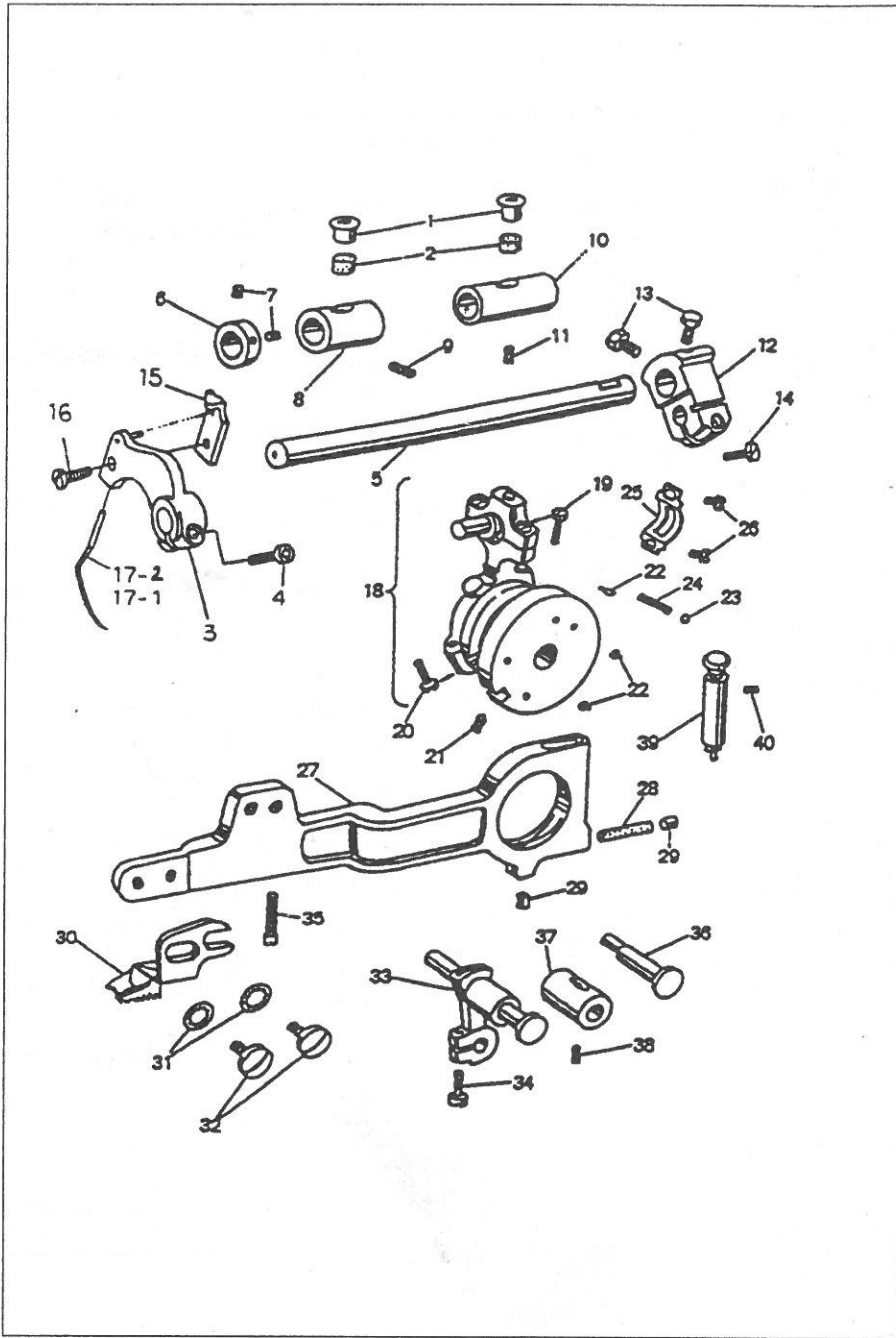
MACHINE FRAME THREAD TENSION & EYE GUARD COMPONENTS

REF No.	Parts No.	Description
34	AC-17	Washer
35	AC-16	Nut
36	21722	Machine Base Clamp Screw
37	11146	Machine Base Washer
38	11145	Machine Base Nut
39	21736	Machine Base Bolt
40	0306010	Nut
41	11163	Arm Top RUBber Cap
42	21702-H	Arm Bed
43	21721	Cpver Plate
44	124	Screw
45	21719	Arm Bed Adjusting Screw
46	5039-A	Arm Bed Nut
47	0096006	Screw
48	4544	Arm Bed Shaft Bushing(Left)
49	4531	Arm Bed Shaft
50	4545	Arm Bed Shaft Bushing(Right)
51	98	Screw
52	21720-H	End COVer
53	11153	Screw
54	8189	Machine Number Plate
55	11679	Taper Pin
56-1	2176-1N	Model Mark for CM-1190-1G
56-3	2176-2N	Model Mark for CM-1190-2G
57	4203-A	Thread Guide
58	4193	Screw
59	4537-B	Screw
60	6074	Screw
61	11143	Machine Base Rubber Ring
62	21702-H2	Spring Bracket
63	14027-A	Bolt
64	20143	Screw



## MAIN SHAFT MECHANISM COMPONENTS

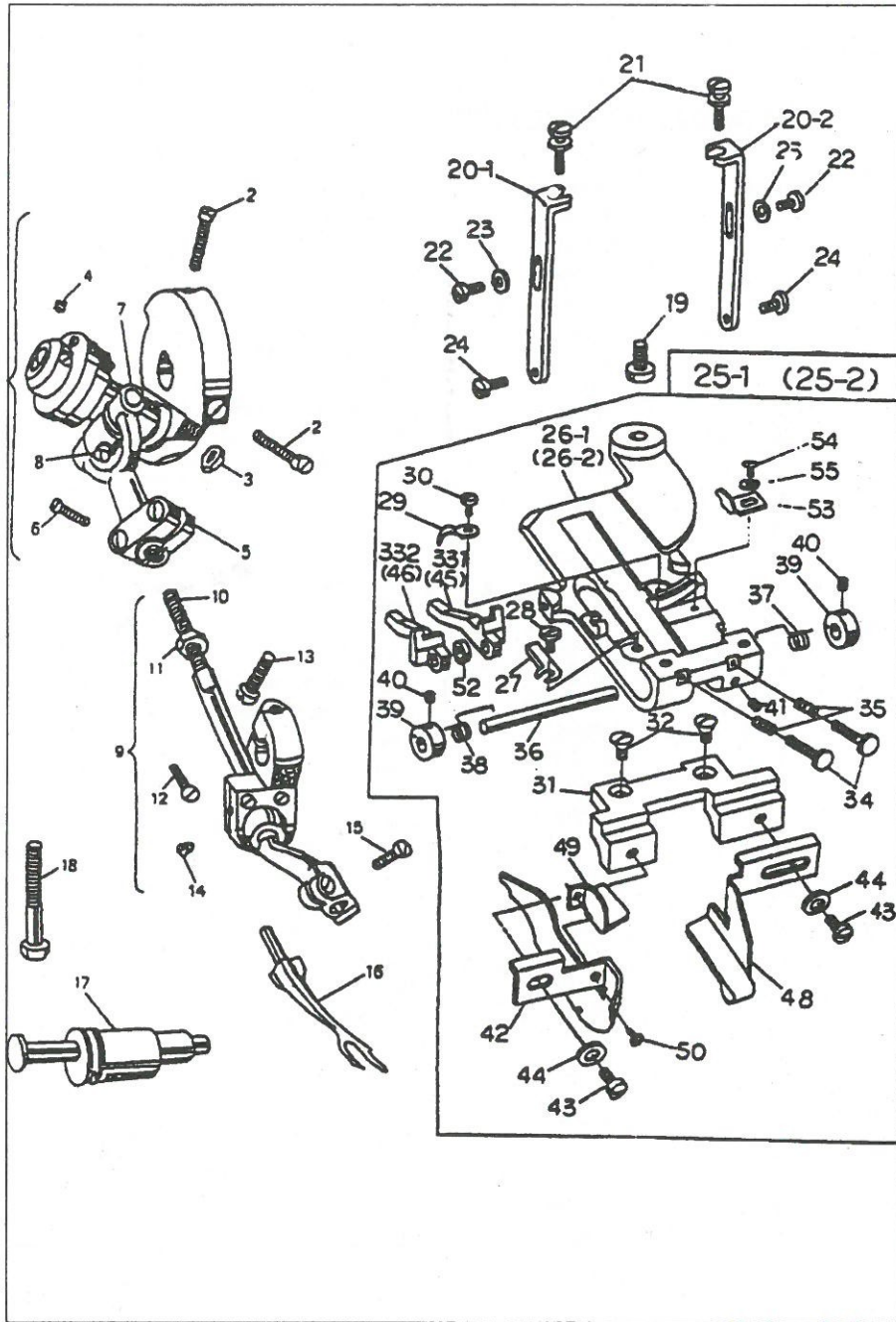
REF No	Parts No	Description
1	11005	Main Shaft Bushing(Left)
2	131	Screw
3	4217-A	Oiling Felt
4	4218-A	Oil Cap
5	4133	Counterweight (with Stitch Length Nymbers)
6	132	Screw
7	98	Screw
8	4134	Stitch Length Indicator
9	124	Screw
10	4162-A	Small Gear
11	0096006	Screw
12	11006	Main Shaft Bushing(Right)
13	4142-B	Hand Wheel(Pulley)
14	131	Screw
15	4003-A	Main Shaft
16	21774	Gear Shaft
17	131	Screw
18	4077-A	Gear Shaft Collar
19	132	Screw
20	26563	Eccentric Rod Collar
21	21726-A	Eccentric Rod(High)
22	21732-A	Eccentric Bushing
23	4163-1	Main Shaft Gear(Large)
24	4163-3	Screw
25	21726-B	Eccentric Rod(Low)
26	114-A	Screw
27	4207-A	Hand Wheel Rubber Cap



## NEEDLE CARRIER & FEED DOG MECHANISM COMPONENTS

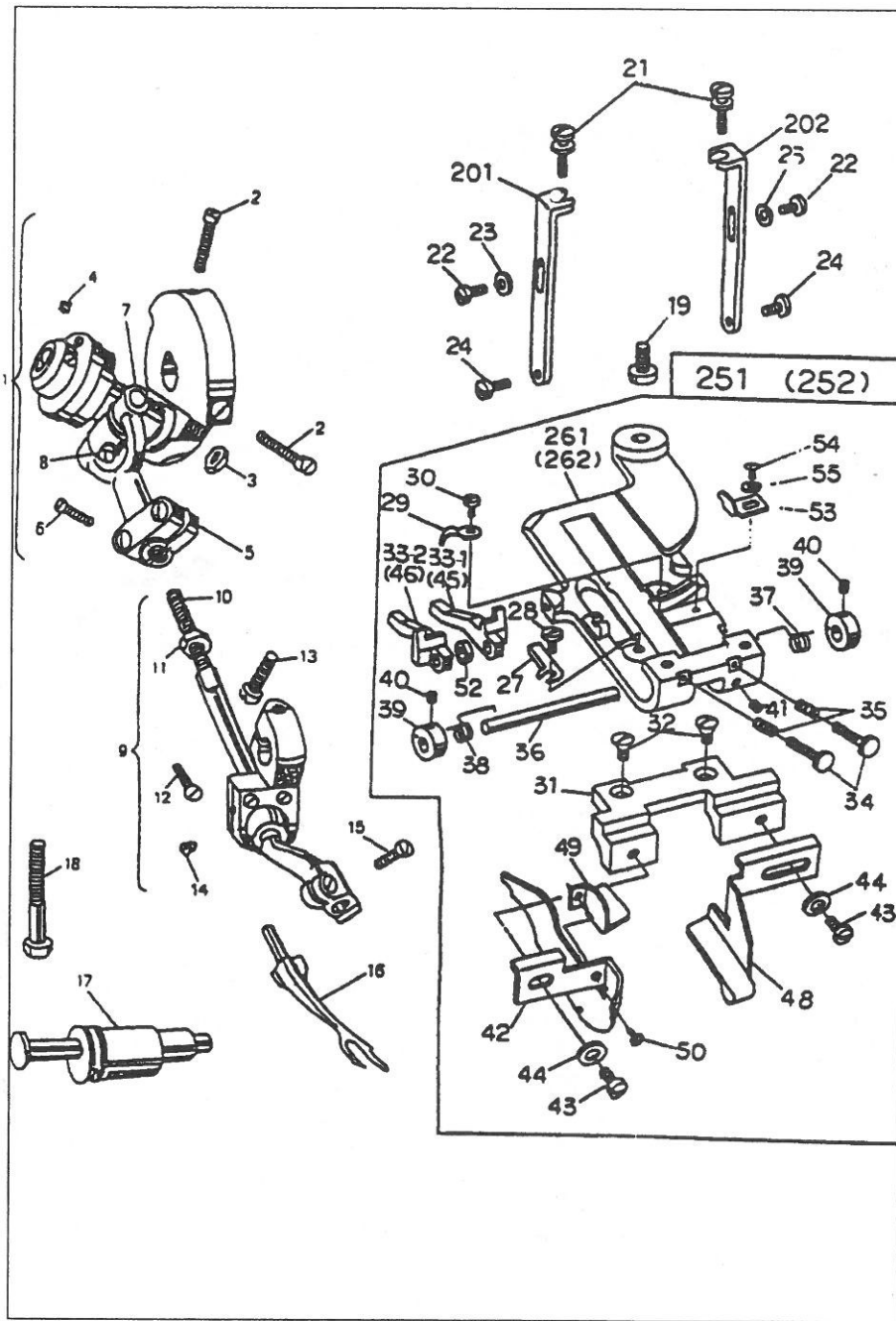
REF No	Parts No	Description
1	4128-A	Arm Top Oil Cap
2	5217-A	Screw
3	17026-G	Needle Carrier
4	17144	Screw
5	4019	Needle Carrier Shaft
6	4022	Needle Carrier Shaft Collar
7	129-B	Screw
8	11032	Needle Carrier Bushing(Front)
9	129-A	Screw
10	11033	Needle Carrier Bushing(Rear)
11	129-A	Screw
12	4017-A	Needle Carrier Shaft Crank
13	4018-C	Screw
14	114-A	Screw
15	17027-G	Needle Clamp
16	17145	Screw
17-1	21790-G1	Groz Needle #80 for CM-1190-1G
17-2	21790-G2	Groz Needle #70 for CM-1190-2G
18	1151-B	Needle Driving Eccentric Assey
19	0214012	Screw
20	0214016	Screw
21	4009-B	Screw
22	4012-A	Stitch Regulator Ball
23	4010	Stitch Regulator Spring
24	4011-A	Ball Connecting Rod Cap
25	4014	Screw
26	4015	Feed Lever
27	11902-A	Oiling Felt
28	11124-J	Feed Lever Cap
29	11121	Feed Dog
30	21730	Washer
31	2528	Screw
32	4048-A	Feed Link & Stud
33	1152-AA	Screw
34	4173	Screw
35	0095016	Eccentric Pin
36	4044	Bushing
37	4043	Screw
38	129-A	Stitch Length-Regulating Plunger
39	520-A	Screw
40	129-A	Screw





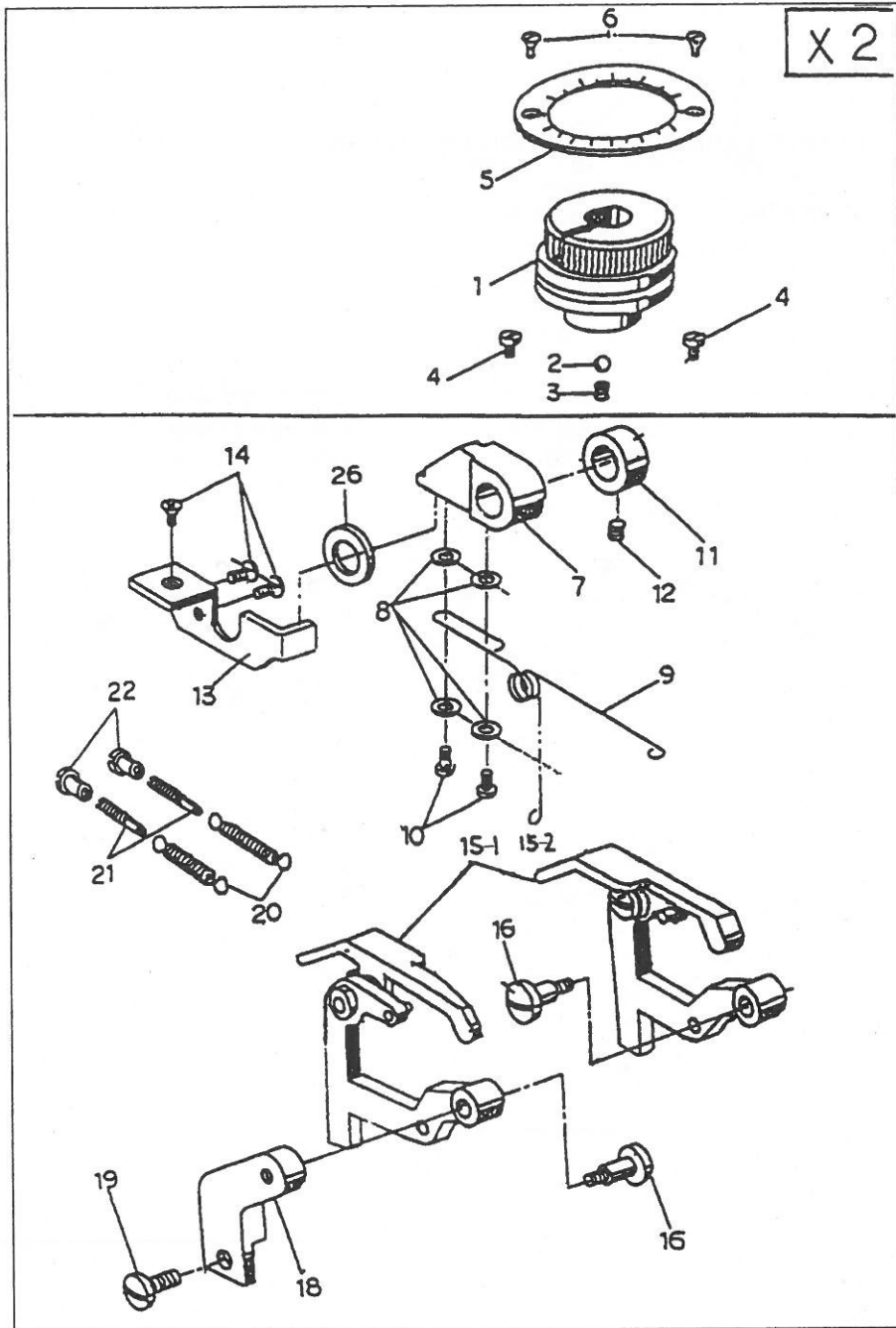
## NEEDLE CARRIER & FEED DOG MECHANISM COMPONENTS

REF No	Parts No	Description
1	538-B	Looper Driver Crank Complete(Ref.Nos.2-8)
2	4191	Screw
3	5039-A	Nut
4	129-B	Screw
5	4030-A	Looper Yoke
6	4031	Screw
7	4032-A	Looper Yoke Pin
8	8142	Screw
9	539-A	Looper Carrier Complete (Ref.Nos.10-15)
10	4035-A	Looper Carrier
11	4176	Nut
12	4216	Screw
13	4213	Screw
14	4179-D	Screw
15	4040	Screw
16	11837	Looper
17	505	Eccentric Sleeve Pin
18	4038	Screw
19	4050	Screw
20-1	4061-A	Press Foot Bracket(Left)
20-2	4061-B	Press Foot Bracket(Right)
21	4062	Screw
22	121-B	Screw
23	11158	Washer
24	4186-A	Screw
25-1	PF-1190-1A	Presser Foot Complete(1190-1G)
25-2	PF-1190-2A	Presser Foot Complete(1190-2G)
26-1	21705-1A	Plain Presser Foot for 1190-1G
26-2	21705-2A	Plain Presser Foot for 1190-2G
27	11563	Needle Guide
28	4052-B	Screw



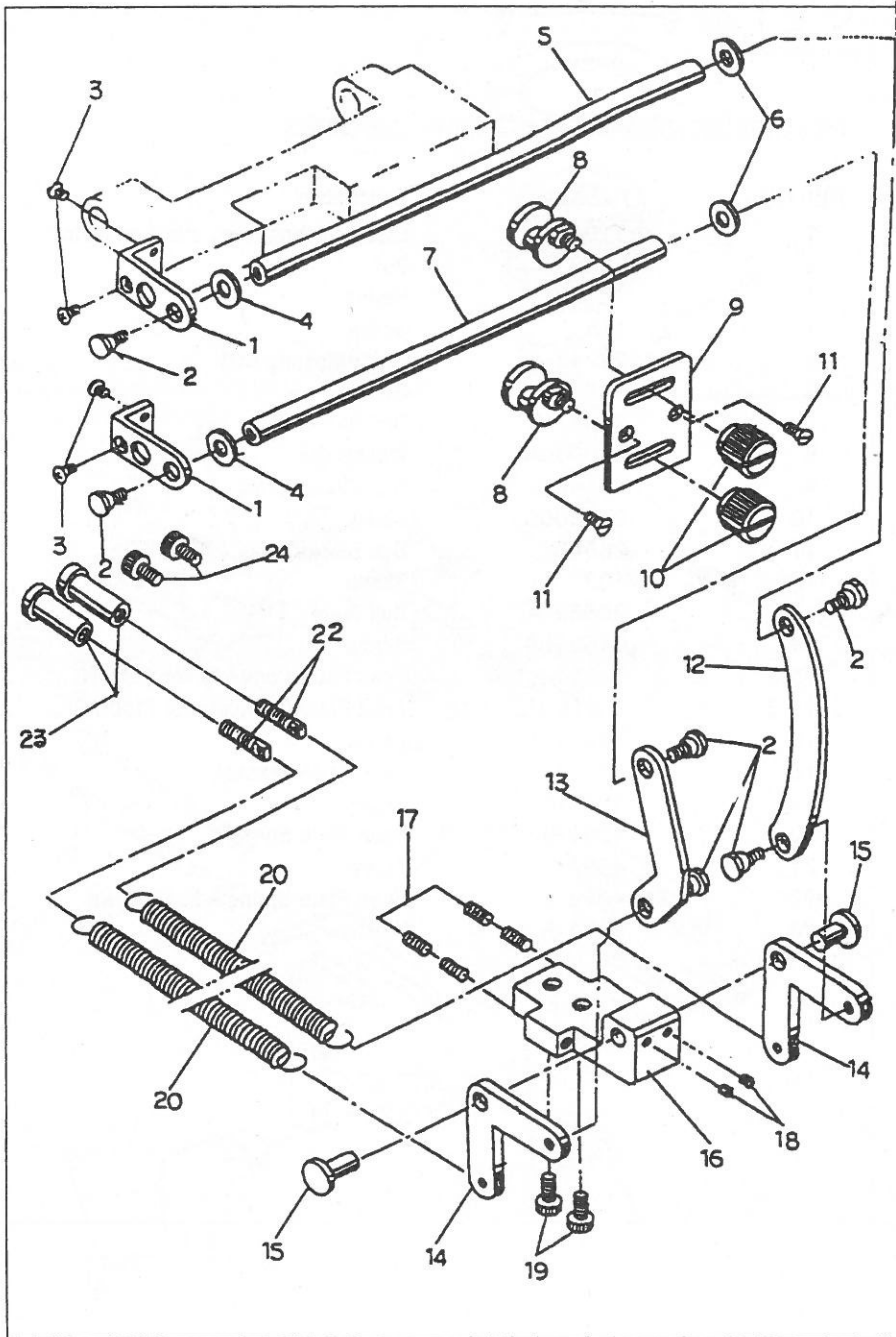
## NEEDLE CARRIER & FEED DOG MECHANISM COMPONENTS

REF No	Parts No	Description
29	21770	Chaining Finger for 1190-1G
30	4185-B	Screw
31	21708-C	Edge Guide Bracket
32	11152	Screw
33-1	21706-1B	Cloth Retainer (R)for 1190-1G
33-2	21706-2B	Cloth Retainer (L)for 1190-1G
34	21768-A	Cloth Retainer Stopper Screw
35	7039-B	Cloth Retainer Adjusting Noth
36	21711 A	Cloth Retainer Pin
37	21709 BA	Cloth Retainer Spring(Right)
38	21710-B	Cloth Retainer Spring(Left)
39	21712-A	Cloth Retainer Collar
40	4183	Screw
41	0093004	Screw
42	21707-F	Edge Guide
43	4015	Screw
44	0400308	Washer
45	21739-D	Cloth Retanier(R)for 1190-2G
46	21740-D	Cloth Retanier(L)for 1190-2G
48	21761-B	Cloth Guide
49	21762-A	Cloth Guide Upper Plate
50	4185-B	Screw
52	21769	Spacer
53	22253-A	Drop Stitch Prevention Plate
54	4185-B	Screw
55	4220	Washer



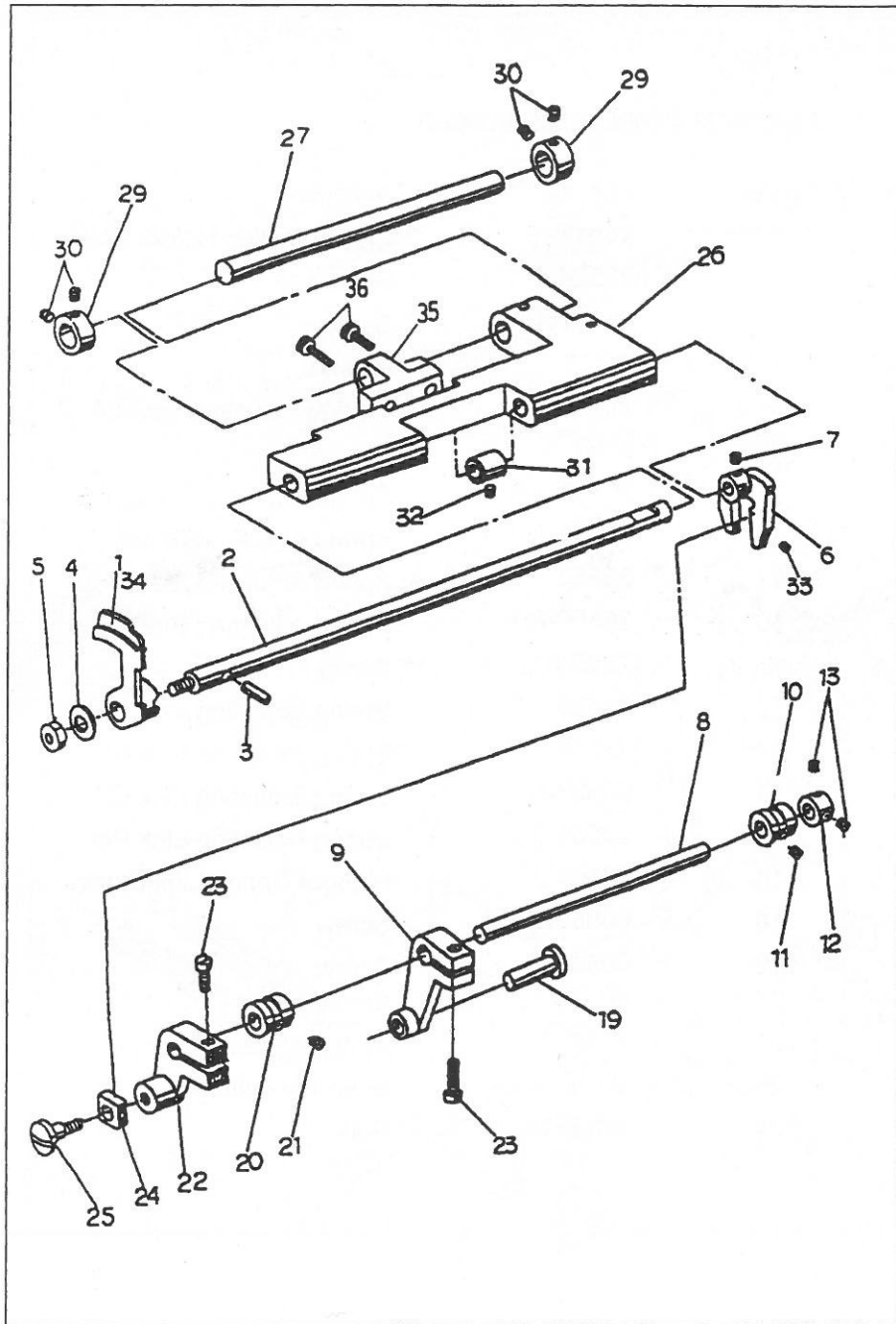
FEED PLATE,DISC ADJUSTING DIAL&DIAL COVER COMPONENTS

REF NO.	Parts No	Description
1	519-GT	Disc Adjusting Regulator Complete
2	4010	Ball
3	10052	Spring
4	115	Screw
5	22241-A	Disc Adjusting Dial
6	5191	Screw
7	26547-C	Dial Block
8	0400308	Washer
9	26548-B	Dial Block Spring
10	0143005	Screw
11	26549	Dial Block Collar
12	132	Screw
13	26562-A	Dial Plate
14	0153008	Screw
15-1	S-516-H1	Feed Plate Complete for 1190-1G
15-2	S-516-H2	Feed Plate Complete for 1190-2G
16	26611	Screw
18	21715	Feed Plate Bracket
19	4048-A	Screw
20	4093-B	Feed Plate Spring
21	4094	Screw
22	4095	Feed Plate Spring Adjusting Nut
26	5224-A	Washer



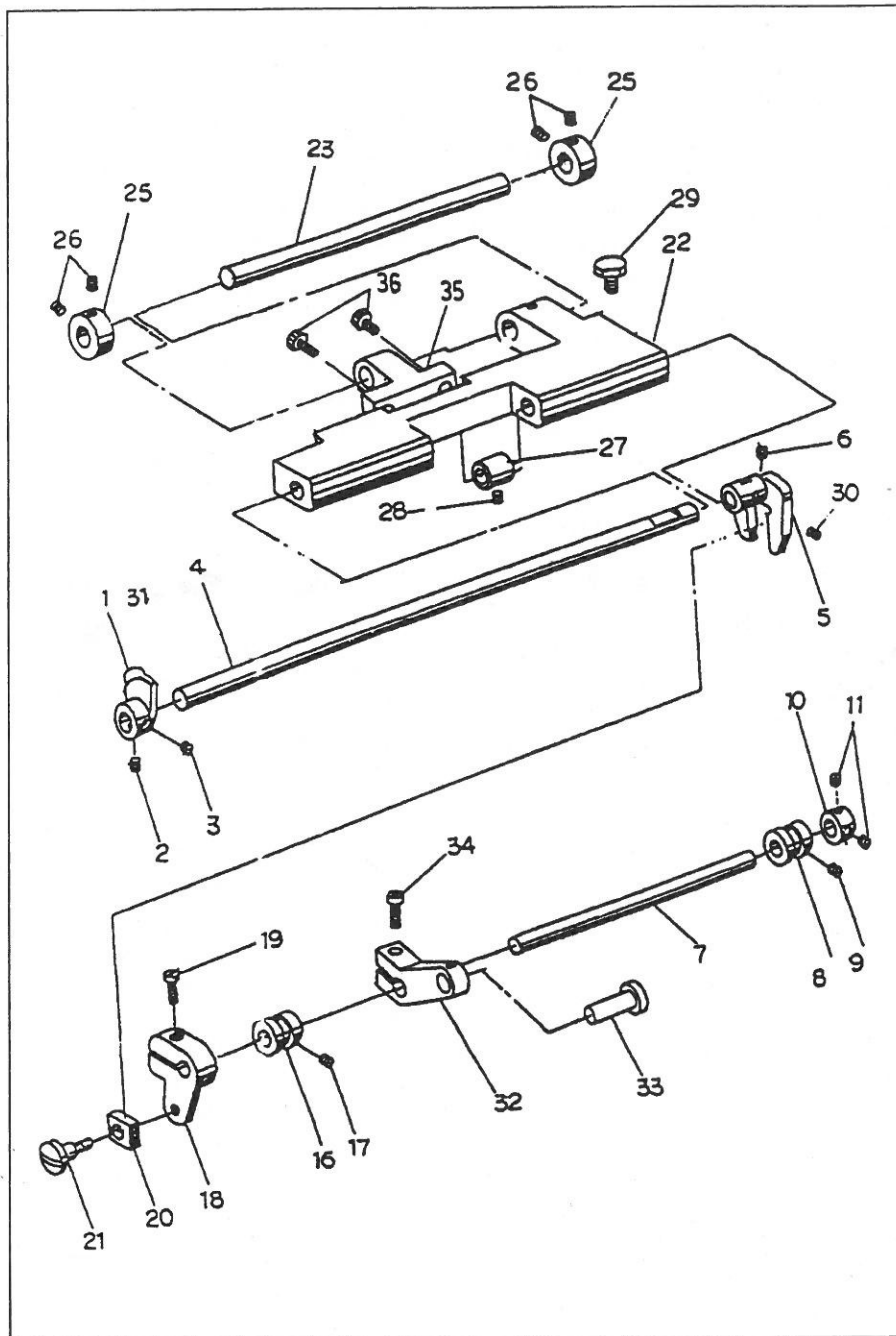
SPRING ADJUSTING FOR RIDGE FORMING DISC MECHANISM COMPONENTS

REF No	Parts No	Description
1	26518	Disc Adjusting Holder Plate
2	26528	Screw
3	0153008	Screw
4	11158	Washer
5	26523-A	Spring Adjusting Lever A
6	1158	Washer
7	26524-A	Spring Adjusting Lever B
8	26551-A	Spring Adjusting Shifter
9	26552	Spring Adjusting Plate
10	26550-A	Spring Adjusting Dial
11	7095-A	Screw
12	26526	Spring Adjusting Link B
13	21759	Spring Adjusting Link A
14	26527-A	Spring Adjusting Link C
15	26564	Spring Adjusting Link Pin
16	26561	Plunger Spring Link Block
18	0095020	Screw
19	0094006	Screw
20	4073-T	Spring
22	4074	Spring Adjusting Screw
23	4075	Spring Adjusting Nut
24	0216016	Bolt



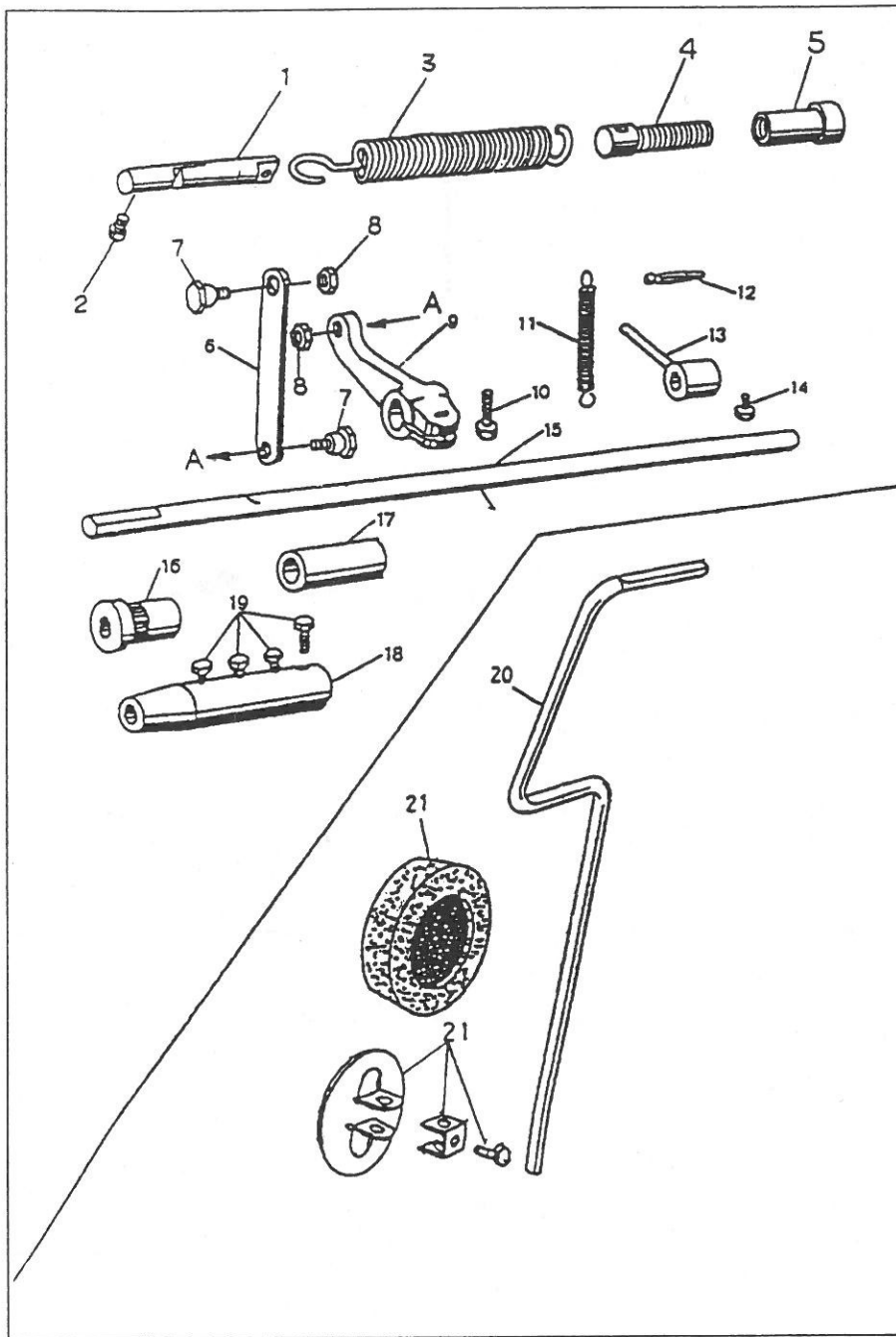
### RIDGE FORMING DISC FOR RIGHT COMPONENTS

REF No	Parts No	Description
1	21703-A	Ridge Forming Disc(Right)for CM-1190-2G
2	26521-A	Ridge Forming Disc Shaft B
3	8150	Ridge Forming Disc Postiton Pin
4	5222-B	Ridge Forming Disc Washer
5	4208	Ridge Forming Disc Nut(Left)
6	26530-C	Ridge Forming Disc Shaft Link
7	0094006	Screw
8	26535-B	Ridge forming Disc Driving Shaft
9	26529-B	Eccenmtric Rod (Low)Lever
10	26538-A	Ridge Forming Disc Driving Shaft Bushing
11	129-A	Screw
12	10017-A	Ridge Forming Disc Diriving Shaft Collar
13	17147-T	Screw
19	21773	Driving Shaft Lever Pin
20	26538-A	Driving Shaft Bushing
21	129-A	Screw
22	26529-A	Slider Ling A
23	26543	Screw
24	11808	Slider
25	26533-A	Screw
26	21751-H1	Disc Adjusting Holder B
27	26522-H	Disc Adjusting Holder Shaft
29	17037	Disc Adjusting Holder Shaft Collar
30	17146	Bolt
31	26545	Ridge Forming Disc Shaft Collar
32	129-B	Screw
33	0094006	Screw
34	21776	Ridge Forming Disc(Right)for CM-1190-1G
35	21750-H2	Ridge Forming Disc Adjusting Block
36	0215010	Bolt



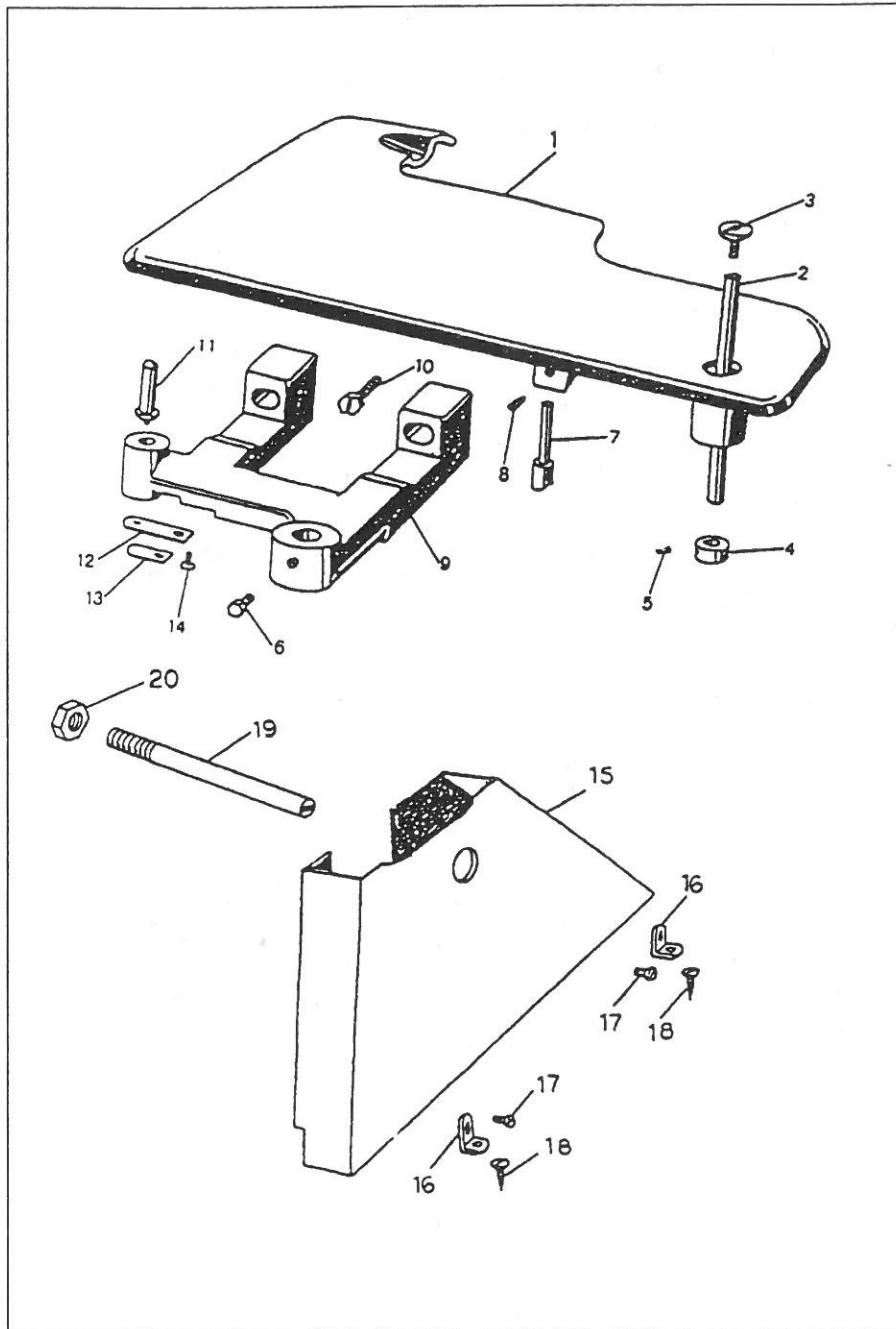
RIDGE FORMING DISC FOR LEFT MECHANISM COMPONENTS

REF No	Parts No	Description
1	21704-A	Ridge Forming Disc(Left)for CM-1190-2G
2	0084006	Screw
3	0094006	Screw
4	26520-B	Ridge Forming Disc Shaft(Left)
5	26532-C	Slider Link(Left)
6	0094006	Screw
7	26534-C	Driving Shaft
8	26538-A	Driving Shaft Bushing A
9	129-A	Screw
10	10017-A	Collar
11	17147-T	Screw
16	26538-A	Driving Shaft Bushing A
17	129-A	Screw
18	26531-B	Slider Link
19	26542	Screw
20	11808	Slider
21	26533-A	Screw
22	21750-H1	Disc Adjusting Holder A
23	26522-H	Disc Adjusting Holder Shaft
25	17037	Disc Adjusting Holder Shaft Collar
26	17146	Bolt
27	26545	Ridge Forming Disc Shaft Collar
28	129-B	Screw
29	26579	Disc Adjusting Holder A Stopper
30	0094006	Screw
31	21775	Ridge Forming Disc(Left)for CM-1190-1G
32	21745-A	Eccentric Rod (High)Lever
33	21773	Eccentric Rod Lever Pin
34	26542	Screw
35	21750-H2	Ridge Forming Disc Adjusting Block
36	0215010	Bolt



KNEE PRESS&KNEE PRESS SHAFT PARTS COMPONENTS

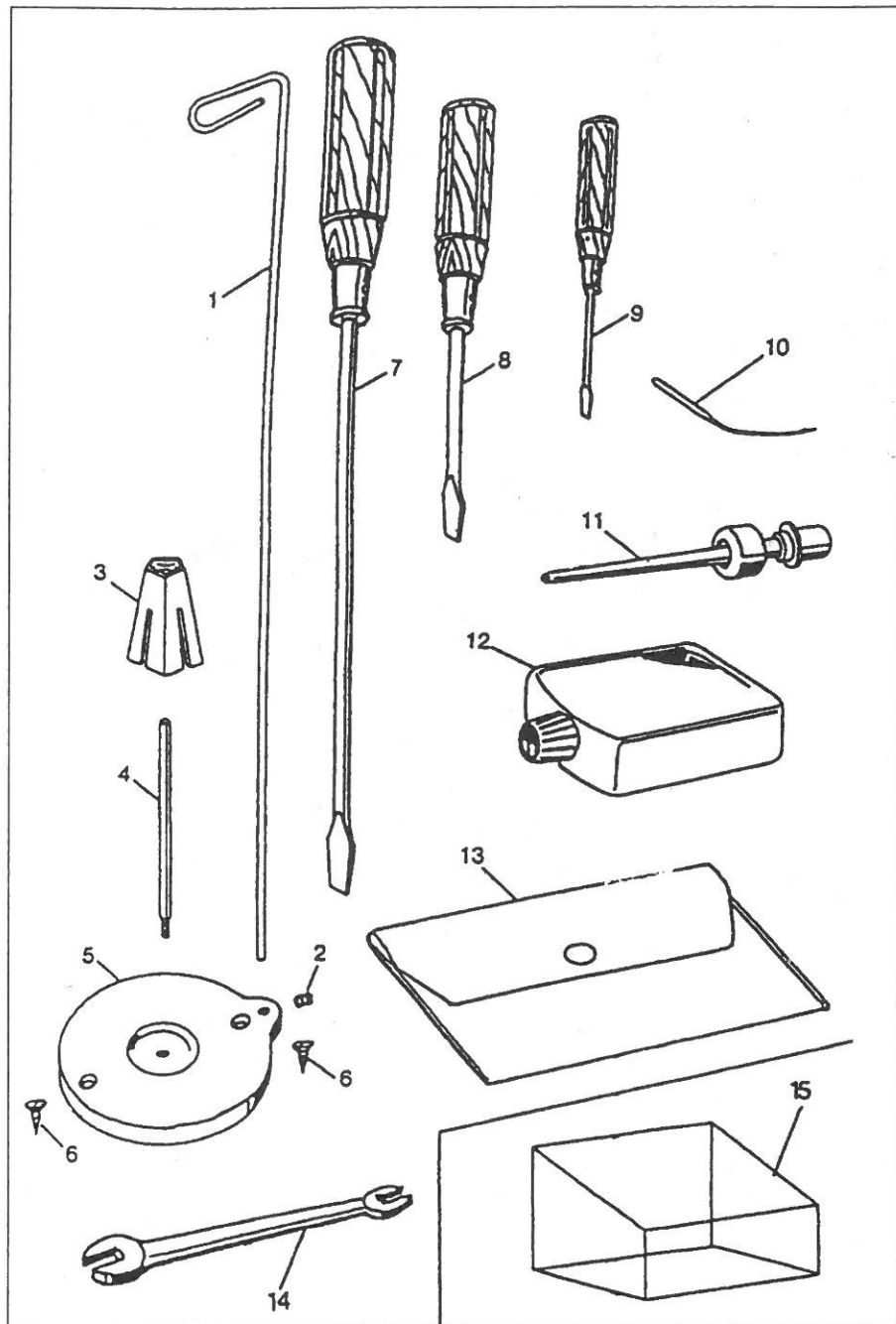
REF No	Parts No	Description
1	26653-S	Machine Base Spring Joint
2	108	Screw
3	26628-T	Machine Base Spring
4	4535	Screw
5	4075	Screw Nut(Large)
6	4539	Machine Base Plate
7	4085-B	Screw
8	5207	Nut
9	21724-A	Knee Press Lever
10	4555	Bolt
11	4082	Spring
12	4116	Knee Shaft Spring Pin
13	4080-A	Spring Collar
14	4184	Bolt
15	11063-A	Knee Press Shaft
16	4081	Knee Press Shaft Bushing
17	4177	Knee Press Shaft Sleeve
18	4146-B	Knee Press Shaft Sleeve
19	4147- C	Bolt
20	4148-B	Knee Press Rod
21	S-21088	Knee Press Pad Set



### WORK PLATE & BELT COVER PARTS COMPONENTS

REF No	Parts No	Description
1	26566	Work Plate
2	4154-A	Work Plate Shaft
3	99-A	Screw
4	4155	Work Plate Shaft Collar
5	132	Screw
6	4180	Bolt
7	4156	Work Plate Latch
8	5230	Screw
9	4542	Work Plate Bracket
10	4158	Bolt
11	4159	Work Plate Bracket Spring Pin
12	4160	Work Plate Bracket Leaf Spring(Long)
13	4161	Work Plate Bracket Leaf Spring(Short)
14	4048-A	Screw
15	4219-A	Belt Cover
16	11554	Belt Cover Bracket
17	5233	Screw
18	11557	Wood Screw
19	6107	Needle Positioner Positioning Screw
20	4068-A	Nut





### STANDARD ACCESSORIES

REF No	Parts No	Description
1	4152	Thread Guide
2	129-A	Screw
3	AC-101	Plastic Cap
4	4151	Spool Pin
5	4150	Cotton Stand Base
6	AC-10A	Wood Screw
7	AC-01	Screw Driver(Large)
8	AC-02	Screw Driver(Medium)
9	AC-03	Screw Driver(Small)
10-1	21790-G1	Groz Needle #80for CM-1190-1G
10-2	21790-G2	Groz Needle #70 for CM-1190-2g
11	AC-04-A	Oiler
12	AC-05-A	Oil
13	AC-08-A	Accessory Bag
14	AC-104	Spanner
15	C-30	Vinyl Cover