

零件书

SPARE PARTS BOOK

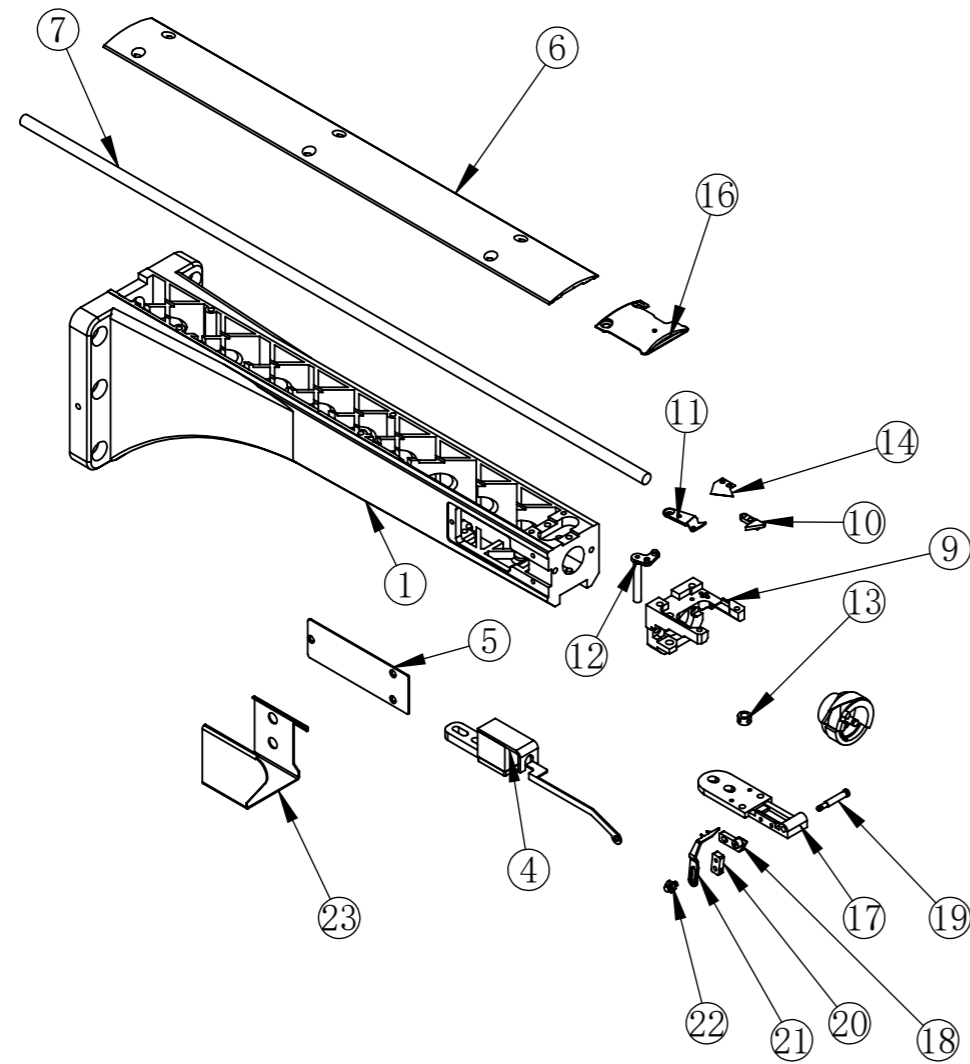
**SINGLE HEAD
PORTABLE TUBULAR EMBROIDERY MACHINE
单头高速帽绣机**

SINGLE HEAD PORTABLE TUBULAR EMBROIDERY MACHINE 单头高速帽绣机

C O N T E N T S 目 录

1	Rotary Hook Base 梭床	8	Gear Box 齿轮箱
2	Trimming Parts 底线剪线部分	9	Machine Cover 机器罩盖
3		10	Color Change Parts 换色
4	X Axis Guide Rail X向导轨	11	
5	Y Axis Guide Rail Y向导轨	12	Tension 夹线器
6-1	Head Guide Rail Jump Solenoid 机头导轨 机头电磁铁	13	
6-2	Slide Block Take Up Lever A/B 针杆驱动块 挑线杆AB	14	
6-3	Needle Bar Driving Cam Set 大连杆组件	15	
6-4	Presser Foot Cam Block 压脚凸轮 压脚驱动块	16	Embroidery Frame 花架
6-5	Jump Motor 电机跳跃	17	Cap Frame Parts 帽框组件
7-1	Needle bar Take Up Lever 针杆 挑线杆	18	Cap Stand Frame 帽架
7-2	Head Cover Thread Lock 面盖 下过线		

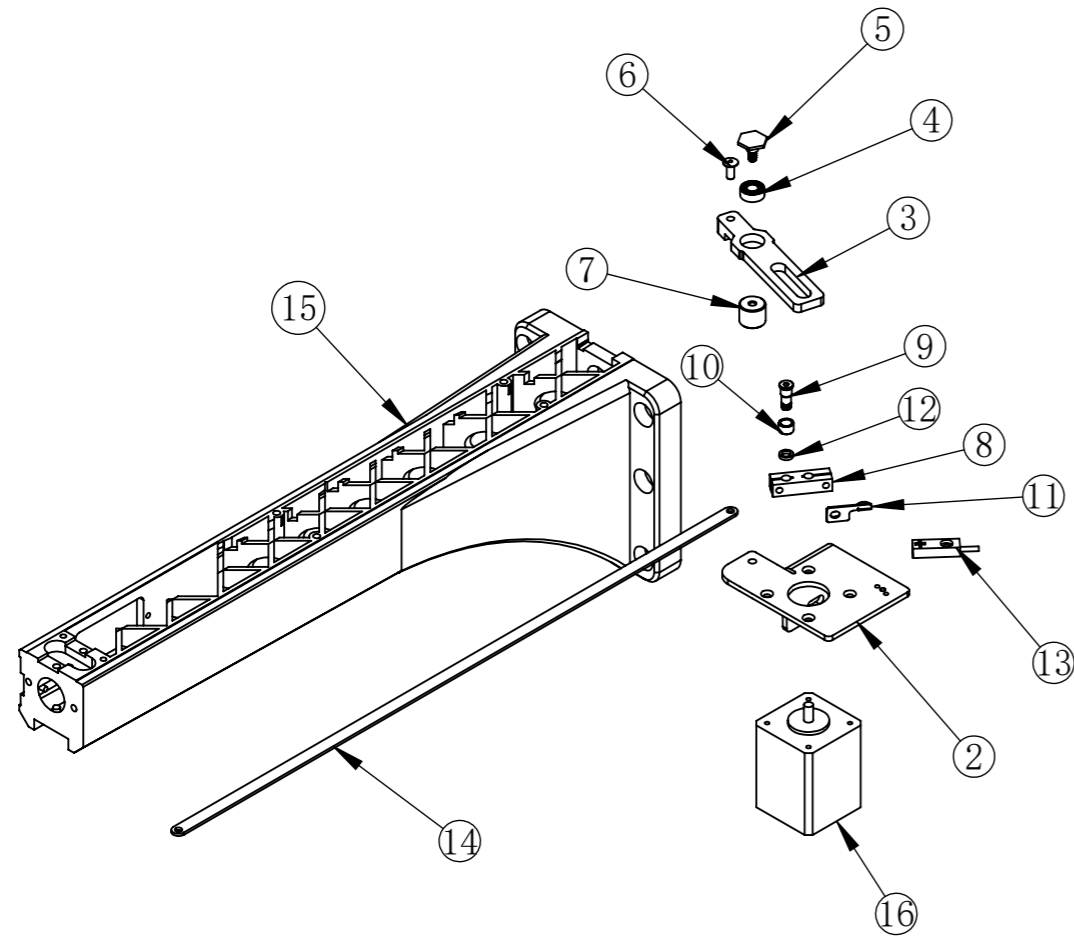
1. Rotary Hook Base 梭床



1. Rotary Hook Base 梭床

NO.	Chinese Description	Description	Part No.	Qty
1	梭床	Rotary Hook Base	0106030001	1
4	扣线电磁阀	Picker Solenoid	0206120002	1
5	梭箱左侧盖板	Left Cover	0103030026	1
6	圆弧梭床中盖板	Mid Cover	0106030002	1
7	旋梭轴	Rotary Hook Shsft	0106030004	1
9	针板支撑架	Needle Plate Base	0103030006	1
10	定刀	Fixed Knife	0103030018	1
11	动刀	Movable Knife	0103030017	1
12	动刀驱动轴	Movable Knife Drive Arm	0103030015	1
13	动刀轴套	Collar	0103030016	1
14	压片	Under Thread Presser	0103030019	1
16	针板		0103030010	1
17	扣线器底板	Picker Bracket	0103030022	1
18	扣线器限位块	Picker Stopper	0103030023	1
19	扣线器连接销			1
20	扣线器座	Picker Base	0103030020	1
21	分线叉	Picker	0103030021	1
22	台阶螺丝			1
23	旋梭罩	Hook Cover	0106030014	1

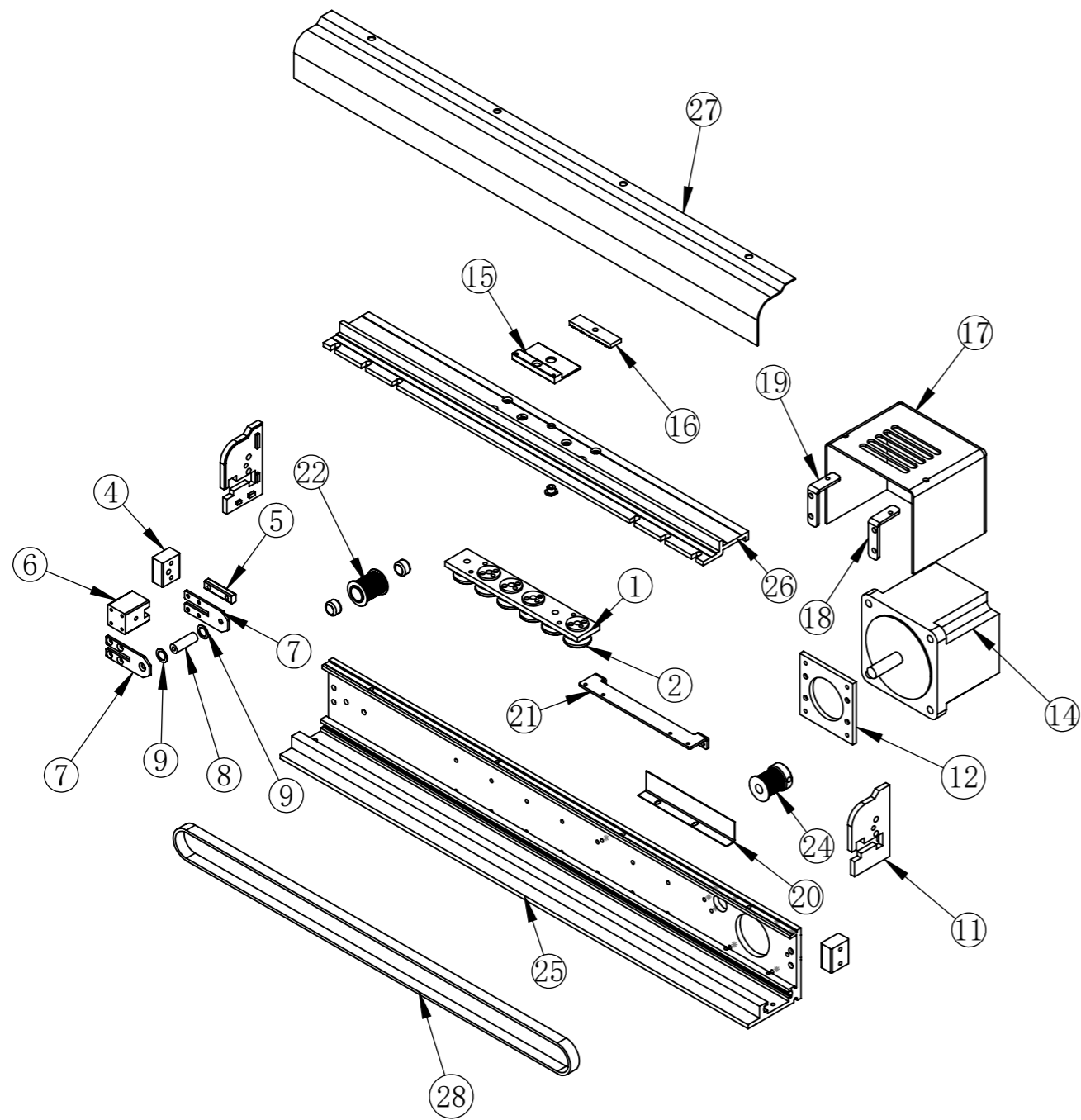
2. Trimming Parts 底线剪线部分



2. Trimming Parts 底线剪线部分

No.	Chinese Description	Description	Part No.	Qty
2	剪线电机座	Motor Base	0106040001	1
3	剪线摆杆 (360度剪线用)	Trimming Drive Rod	0106040008	1
4	轴承628 D13d6H5	Bearing	0202010030	1
5	剪线轴承台阶螺母	Bearing Pin Screw	0106040010	1
6	剪线拉杆销	Pin	0106040013	1
7	剪线摆杆座	Trimming Rod Base Collar	0106040012	1
8	剪线电机驱动摆臂	Trimming Drive Block	0106040007	1
9	分段销 - 剪线用	Pin	0106010014	1
10	换色滚珠	Collar	0106010013	1
11	接近感应器挡片	Senoor Plate	0106040006	1
12	垫片	Bushing	0106010015	1
13	接近感应器 SP08-D3NA	LIMIT SENSOR	0105070001	1
14	小马头机剪线拉板	Small Thread Trimming Broach	0106040002	1
15	梭床	Rotary Hook Base	0106030001	1
16	42电机42H53	Cutting Motor	0206014002	1

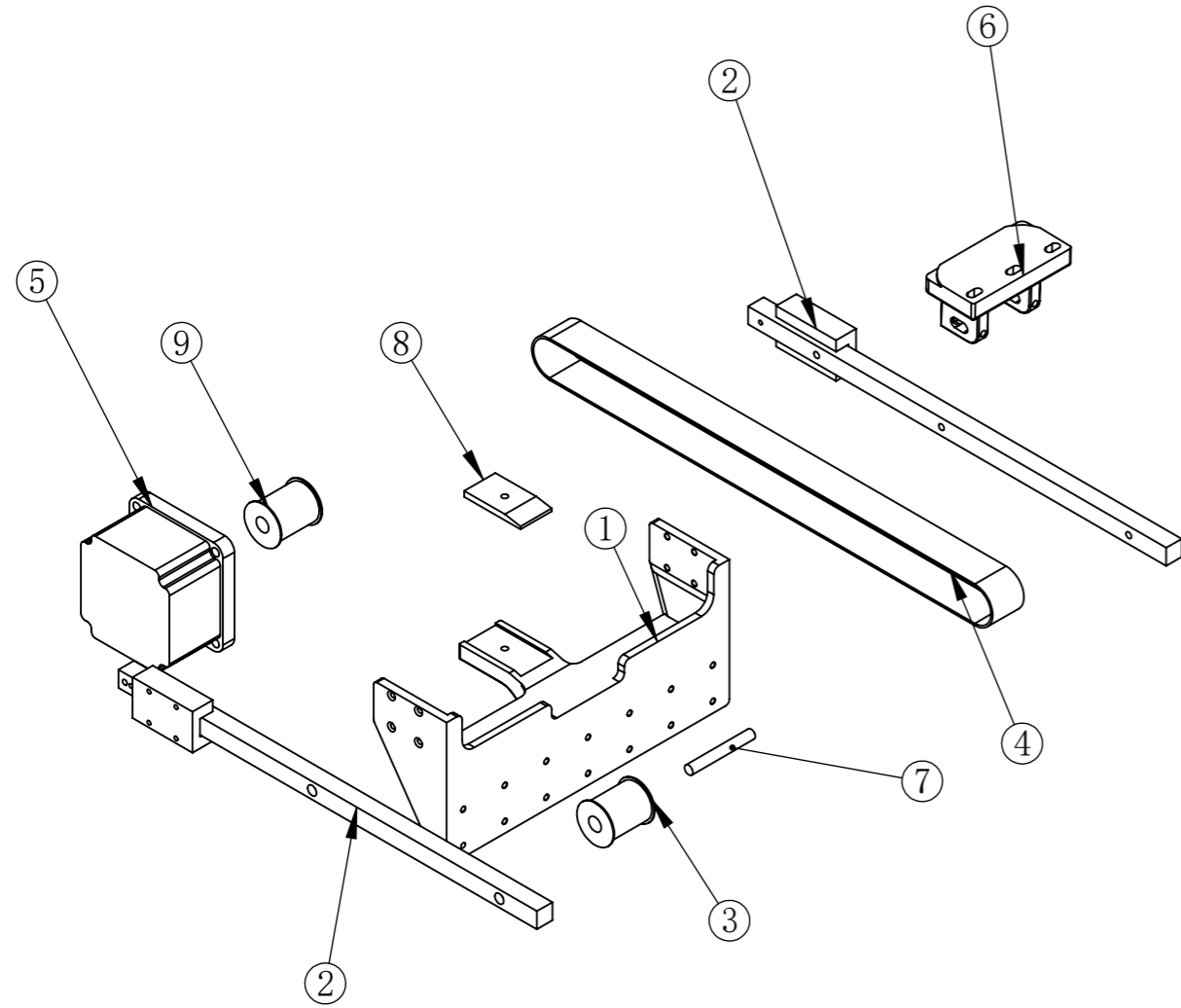
4. X-Axis Guide Rail X向导轨



4. X-Axis Guide Rail X向导轨

No.	Chinese Description	Description	Part No.	Qty
1	X轴承滑块导板座	X Drtve Connecting Plate	0106160024	1
2	U型槽轴承SG66	U Bearing SG66	202010013	6
4	X驱动座端盖固定座	X-side Cover Support	0106160018	1
5	X张力调整块		0106160022	1
6	X驱动被动带轮张力调节块	Timing Pulley Bracket Block	0106160019	1
7	X被动带轮固定片	Timing Pulley Bracker Plate	0106160021	2
8	X被动轮轴	Timing Pulley Shaft	0106160020	1
9	轮加高垫圈	Washer		2
11	X驱动端盖	Cide Cover	0106160011	1
12	电机板	MOTOR PLATE		1
14	57H3P064-5806AZ08步进电机	Step Motor	0206010006	1
15	齿压板底板	Press Block Down		1
16	皮带压板	X-Belt Press Felt		1
17	X电机罩盖	Motor Cover	0106160013	1
18	X向电机罩壳右支架	X-Motor Cover Bracket-R	0105150011	1
19	X向电机罩壳左支架	X-Motor Cover Bracket-L	0105150010	1
20	X驱动限位感应片	X Drive Limit Induction	0106160028	1
21	X驱动限位安装支架	X Drive Limit Mounting Bracket	0106160029	1
22	X被动轮	Pulley	0108200008	1
24	X主动轮	Timing Pulley	0105150036	1
25	X驱动座	X-Axis Drive Base	0106160016	1
26	X驱动连接板	X drive connecting plate	0106160023	1
27	横框盖子	Cover	0106160035	1
28	皮带3MW14	Belt	0204030029	1

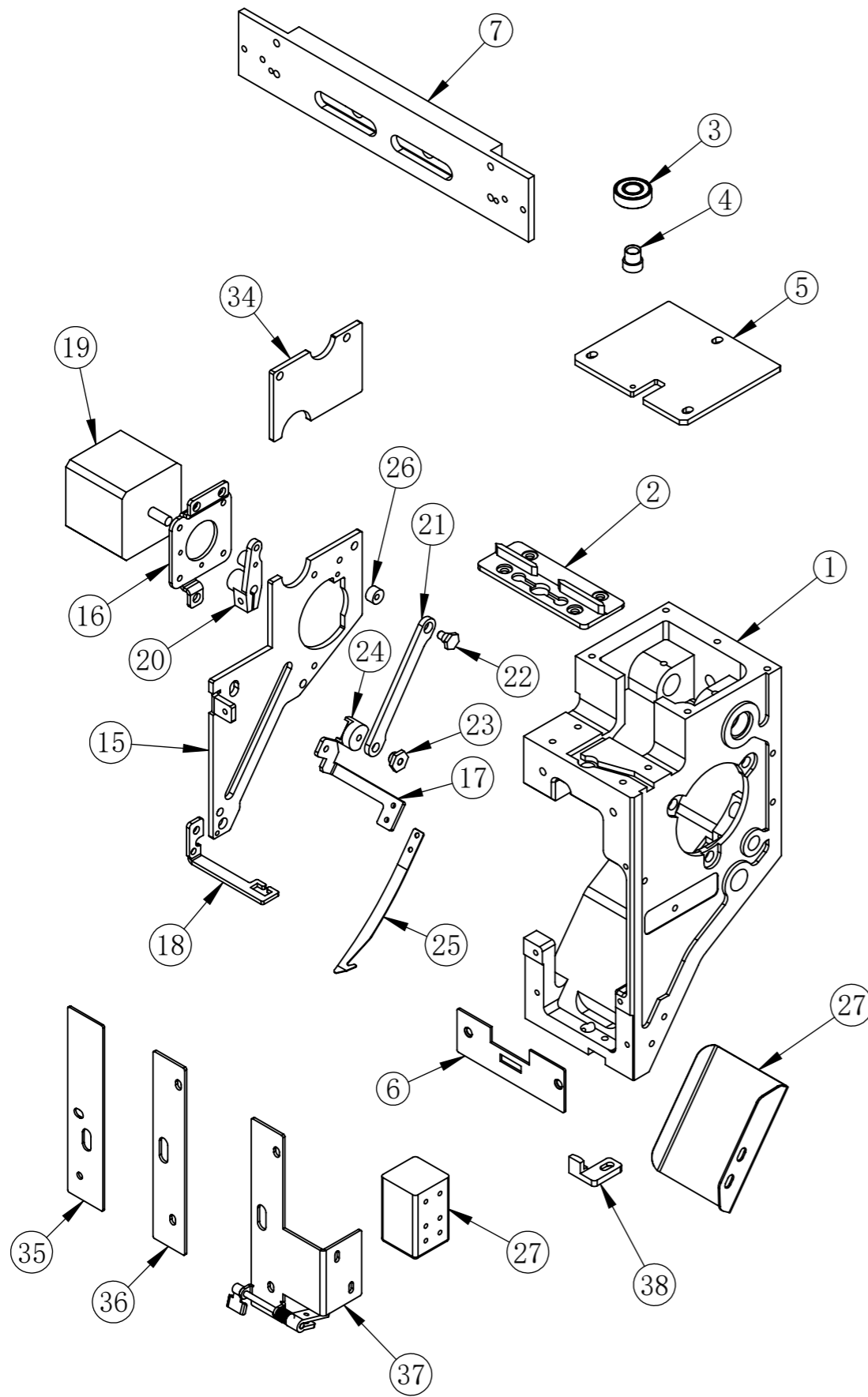
5. Y Axis Guide Rail Y向导轨



5. Y Axis Guide Rail Y向导轨

No.	Chinese Description	Description	Part No.	Qty
1	Y驱动托架	Y Driver Bracket	0106160004	1
2	Y直线导轨组件		0106160015	2
3	Y被动轮	Pulley	0106160036	1
4	皮带5MW30	Belt	0204030018	1
5	86H3P070-3006A-12电机	Motor		1
6	Y被动轮支架	Holder Tension pulley	0106160001	1
7	Y被动轮轴	Pulley Shaft	0106160003	1
8	Y齿压板	Y Press Block UP	0106160005	1
9	Y主动轮	Timing Pulley	0106160002	1

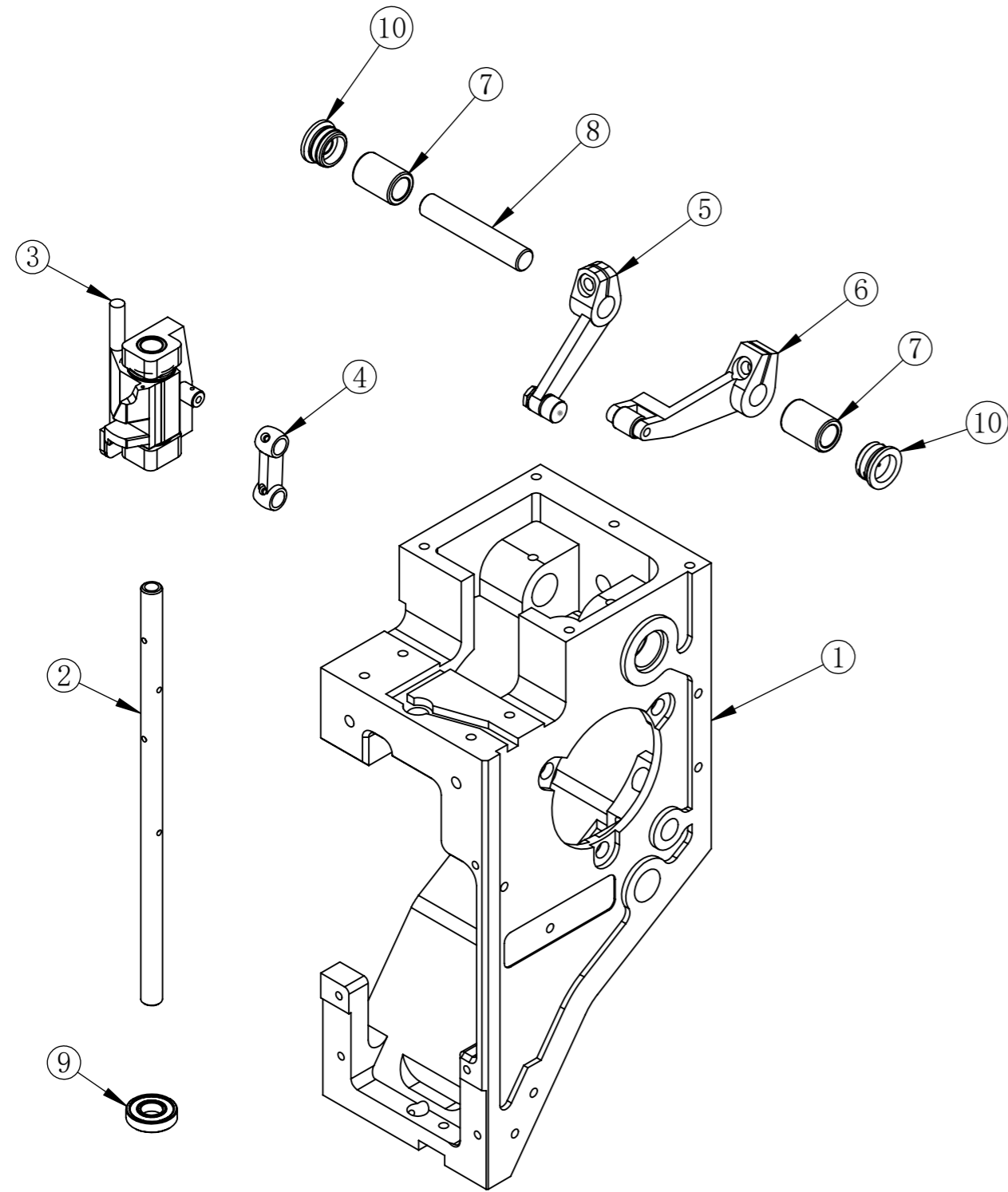
6-1 Arm 1 机头1



6-1 Arm 1 机头1

No.	Chinese Description	Description	Part No.	Qty
1	机头箱基座	HEAD	0102010001	1
2	挑线铝导条	TAKE-UP LEVER GUIDERAIL	0102010007	1
3	轴承R-1980KK	Bearing	0202010007	1
4	自扣轴承销	Roller Pin	0102010003	1
5	机头箱顶盖	HEAD UP COVER	0102010002	1
6	针杆箱下导板	GUIDE PLATENEEDLE BAR CASE	0102010005	1
7	机头直线导轨9针 不带夹板耳	SLIDE RAIL 9N(SINGLE)	0203030004	
7	机头直线导轨 9针	SLIDE RAIL 9N	0203030001	1
8	机头直线导轨6针 不带夹板耳	SLIDE RAIL 6N(SINGLE)	0203030009	
8	机头直线导轨6针	SLIDE RAIL 6N	0203030002	
9	机头直线导轨12针不带夹板耳	SLIDE RAIL 12N(SINGLE)	0203030003	
9	机头直线导轨 12针	SLIDE RAIL 12N	0203030007	
10	机头直线导轨15针不带夹板耳	SLIDE RAIL 15N(SINGLE)	0203030008	
10	机头直线导轨 15针	SLIDE RAIL 15N	0203030005	
15	机头箱下侧盖	SIDE COVER :HEAD LOWER	0102010009	1
16	勾线电机座	BASE: HOOK MOTOR	0102040001	1
17	电机勾线勾刀连杆	HOOK SUPPORT	0102040002	1
18	电机勾线勾刀导向板	GUIDE:HOOK	0102040003	1
19	42电机	42 STEP MOTOR	0206014005	1
20	电机勾线驱动连杆	DRIVE LEVER:HOOK	0102040004	1
21	电机勾线中间连杆	CONNECTING PLATE : HOOK	0102040005	1
22	连杆轴螺丝	STEPPED SCREW	0102040006	1
23	连杆轴圈	SPACER: SLIDE HOOK	0102040007	1
24	尼龙滑块	SLIDE : HOOK	0102040008	1
25	弧形勾刀	HOOK	0102040009	1
26	橡胶缓冲套	DAMPER RING	0102090013	1
27	勾线器后挡板	BACK SIDE COVER	0102040012	1
27	压线电磁铁-自保持式	SOLENOID	0206150002	1
34	机头箱上侧盖	SIDE COVER	0102010008	1
35	机头箱前盖L	HEAD FRONT COVER	0102050001	1
36	机头箱前盖R	HEAD FRONT R	0102010004	1
37	面线夹驱动组件 (右置大)	OPEN FRAME DRIVEN SET	0302050011	1
38	针杆箱定位勾	GUIDE BRACKET NEEDRAIL BAR CASE	0102010006	1

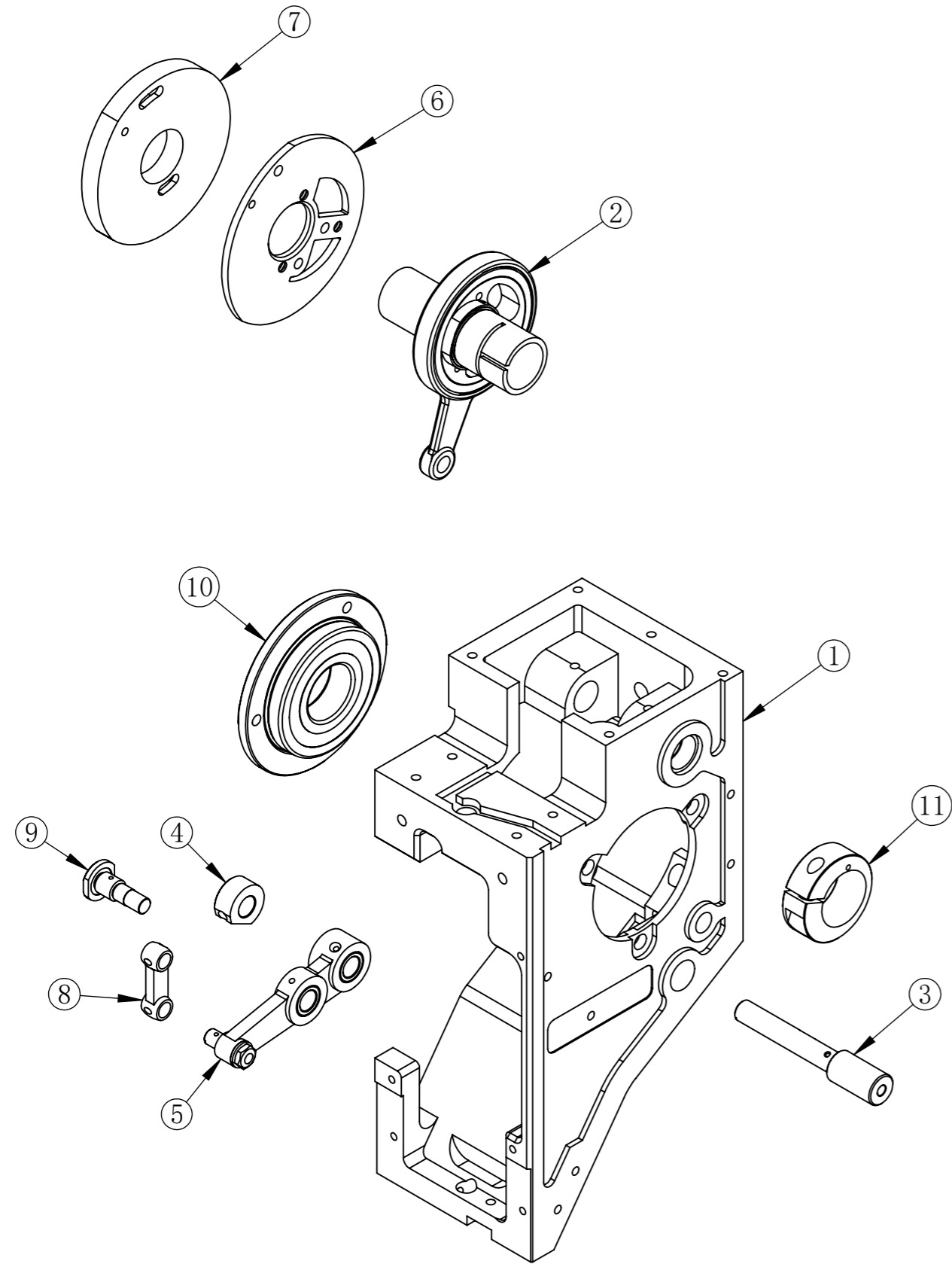
6-2 Arm 2 机头2



6-2 Arm 2 机头2

No.	Chinese Description	Description	Part No.	Qty
1	机头箱基座	HEAD	0102010001	1
2	针杆驱动轴	NEEDLE BAR DRIVE SHAFT	0102010014	1
3	针杆驱动块(电机跳跃用)	NEEDLE BAR RECIPROCATOR SET	0302010005	1
4	针杆驱动连杆(小连杆)	CONNECTING ROD	0102010035	1
5	挑线杆A装配体	TAKE UP LEVER A SET	0302010003	1
6	挑线杆B装配体	TAKE UP LEVER B SET	0302010004	1
7	连杆轴衬套	BEARING CASE BUSHING	0102010023	2
8	挑线杆轴	STRAIGHT PIN	0102010018	1
9	轴承D17d7点24	BEARING	0202010004	1
10	挑线轴塑料堵头	COVER	0102010022	2

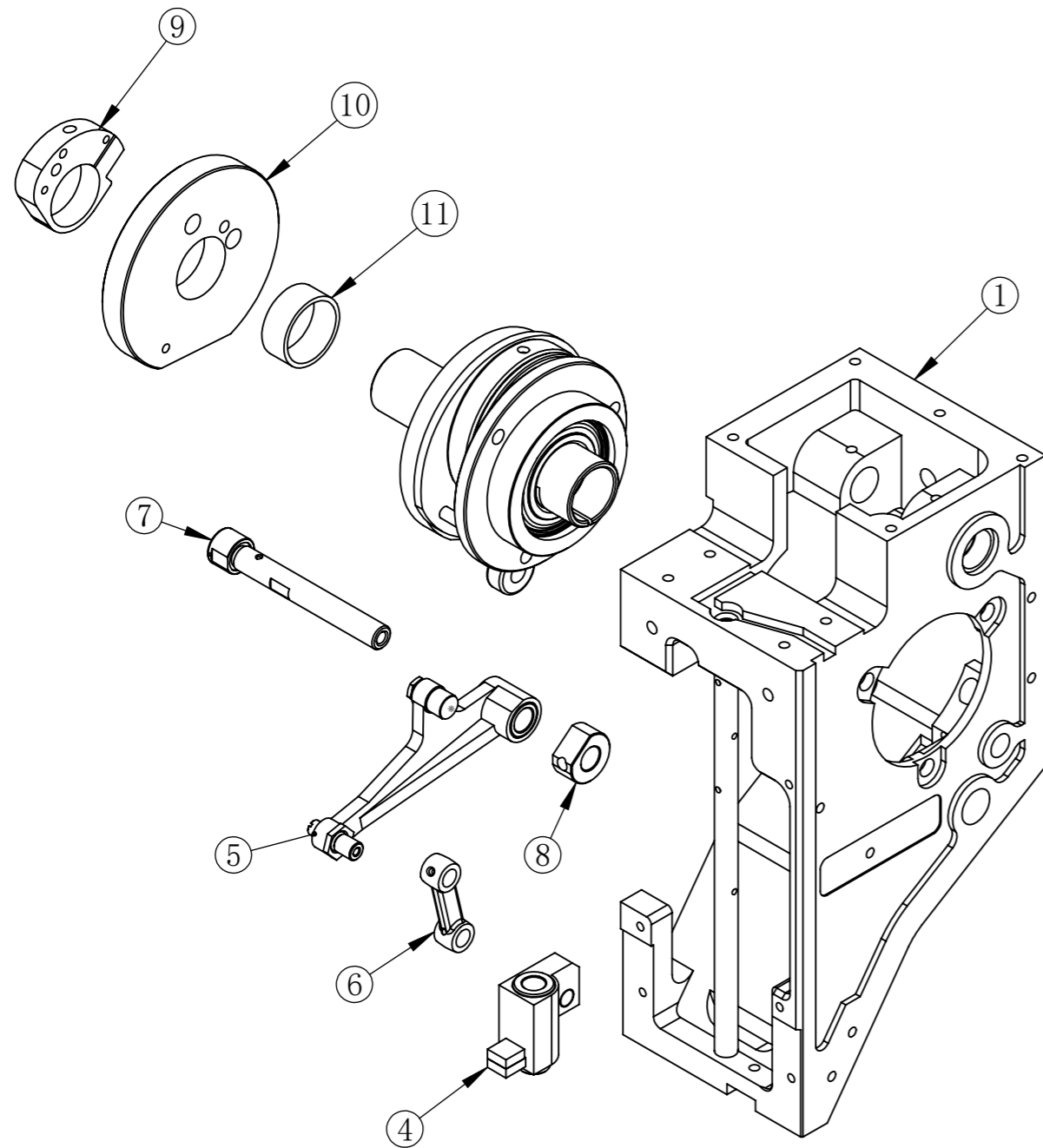
6-3 Arm 3 机头3



6-3 Arm 3 机头3

No.	Chinese Description	Description	Part No.	Qty
1	机头箱基座	HEAD	0102010001	1
2	BOM凸轮三件套18轴长	BOM CAM SET	0302010002	1
3	针杆驱动销	STEPPED PIN	0102010030	1
4	定位挡圈M5	STOPPER COLLAR	0102010032	1
5	三眼连杆装配体	LEVERNEEDLE BAR SET	0102010031	1
6	凸轮盖板 (配BOM)	CAM BASE	0102010027	1
7	挑线凸轮	CAM:TAKE-UP LEVER	0102010028	1
8	针杆驱动连杆(小连杆)	CONNECTING ROD	0102010035	1
9	分段销 (1号销)	STEPPED SCREW	0102010033	1
10	BOM凸轮轴承座	BEARING CASE SET	0302010001	1
11	偏心套环	TIGHTENING COLLAR	0102010024	1

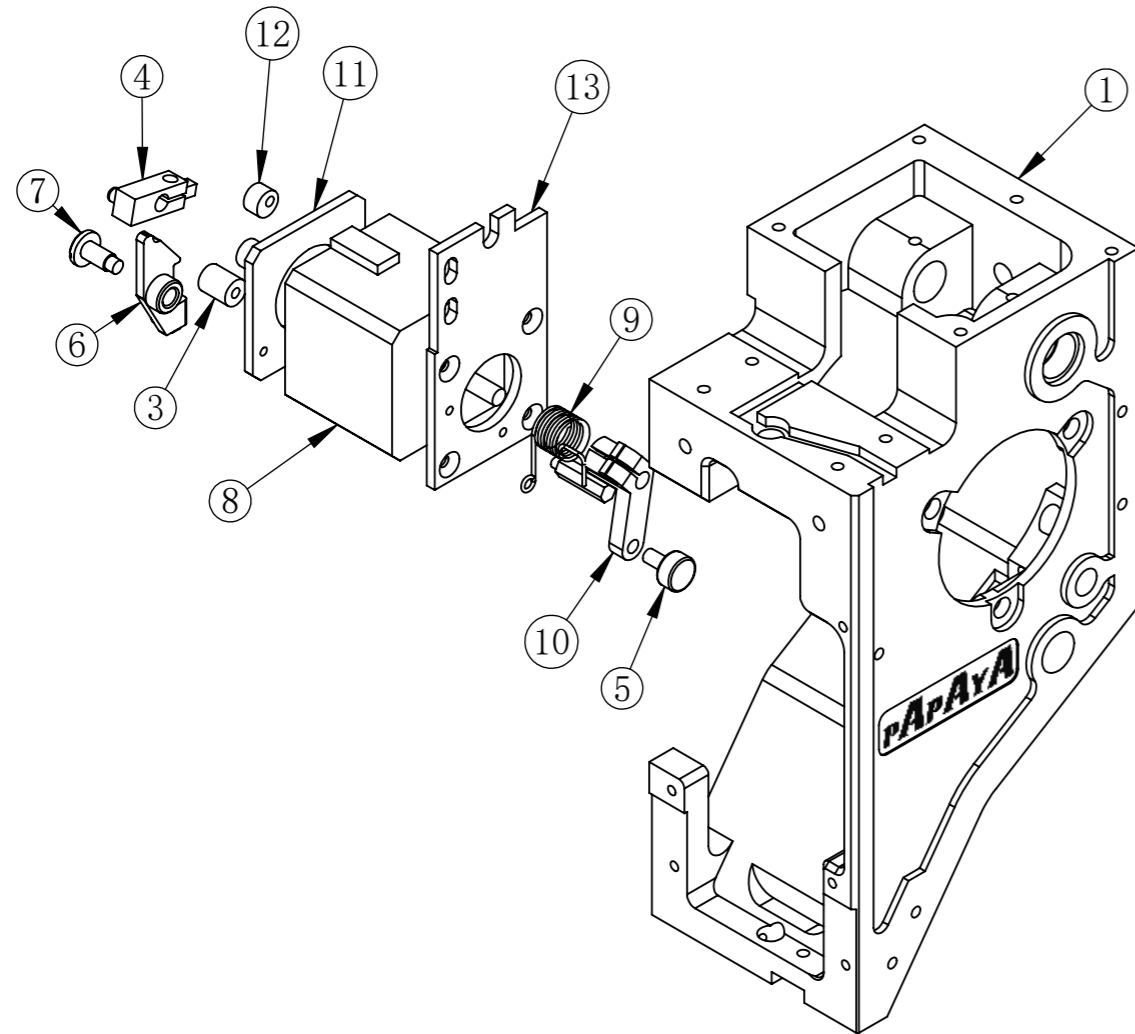
6-4 Arm 4 机头4



6-4 Arm 4 机头4

No.	Chinese Description	Description	Part No.	Qty
1	机头箱基座	HEAD	0102010001	1
3	针杆驱动轴	NEEDLE BAR DRIVE SHAFT	0102010014	1
4	压脚驱动块组件	PRESSER FOOT DRIVER SLIDE BOLCK	0302010007	1
5	压脚凸轮驱动连杆装配体	PRESSER FOOT DRIVEING CONNECTING ROD	0302010006	1
6	压脚驱动连杆	CONNECTING ROD	0102010044	1
7	压脚连杆定位轴	PRESSER FOOT FIXING PIN	0102010043	1
8	定位挡圈M5	STOPPER COLLAR	0102010032	1
9	压脚凸轮固定座	BASE:CAM	0102010040	1
10	压脚凸轮	CAM	0102010041	1
11	凸轮隔圈 H9.5	COLLAR	0102010042	1

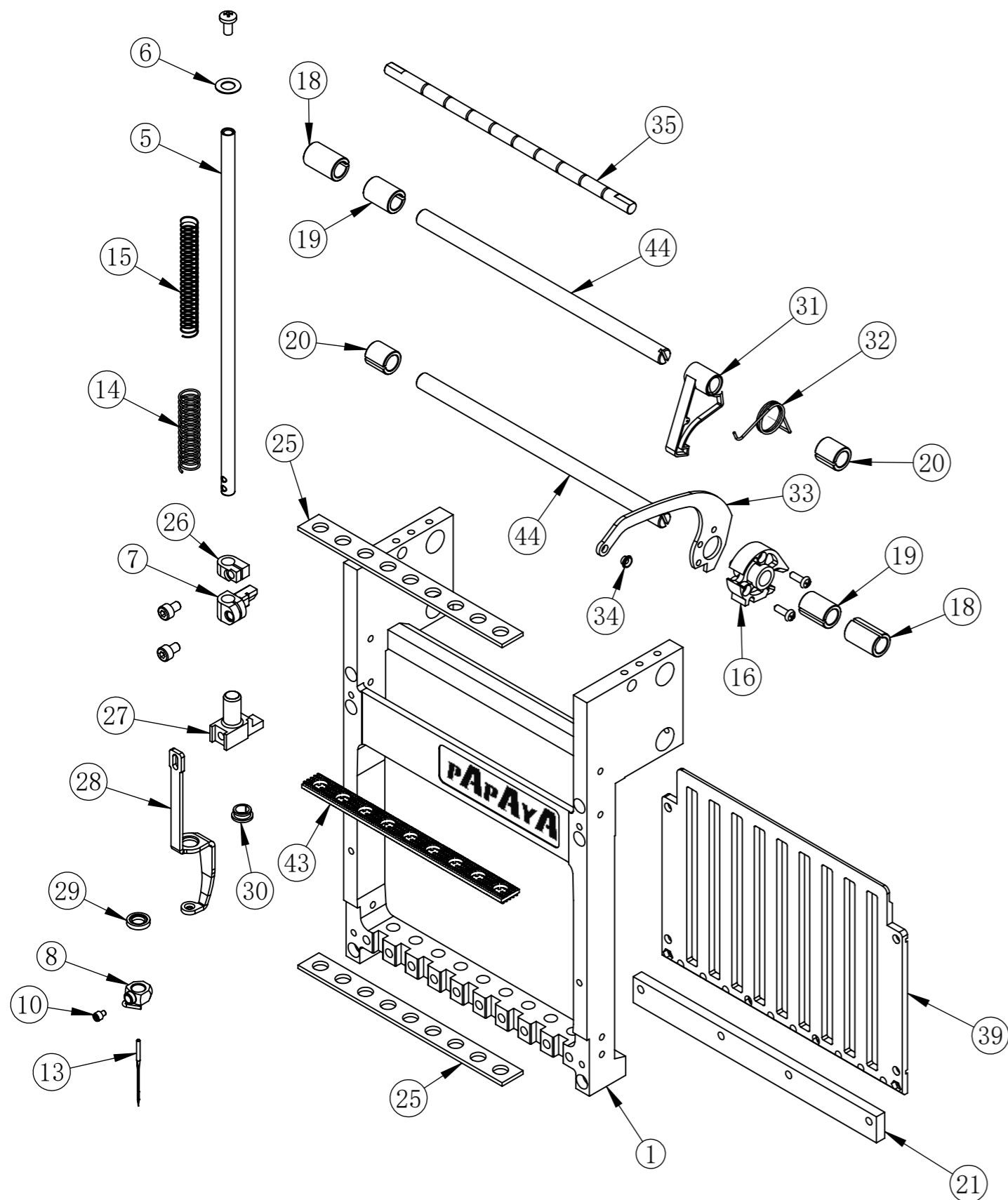
6-5 Jump Motor 跳跃电机



6-5 Jump Motor 跳跃电机

No.	Chinese Description	Description	Part No.	Qty
1	机头箱基座	HEAD	102010001	1
3	止动销	STOP PIN	102090005	1
4	控制柄	LEVER FOR JUMP MOTOR	102090006	1
5	驱动连杆轴承	JUMP BEATING	102090007	1
6	手动柄	CLUTCH LEVER	102090008	1
7	手动销	STEPPED SCREW	102090009	1
8	跳跃电机42H40-1206B05-2211			1
9	跳跃回位弹簧	TORSION SPRING	102090010	1
10	跳跃驱动连杆	LEVER JUMP	102090011	1
11	限位安装侧板	REAR BOARD	102090012	1
12	橡胶缓冲套	DAMPER RING	102090013	2
13	D跳跃电机安装板	JUMP MOTOR BRACKER	102090004	1
14	跳跃电机安装板 - 现货	JUMP MOTOR BRACKER	102090004	1

7-1 针架1 Needle Bar Case 1



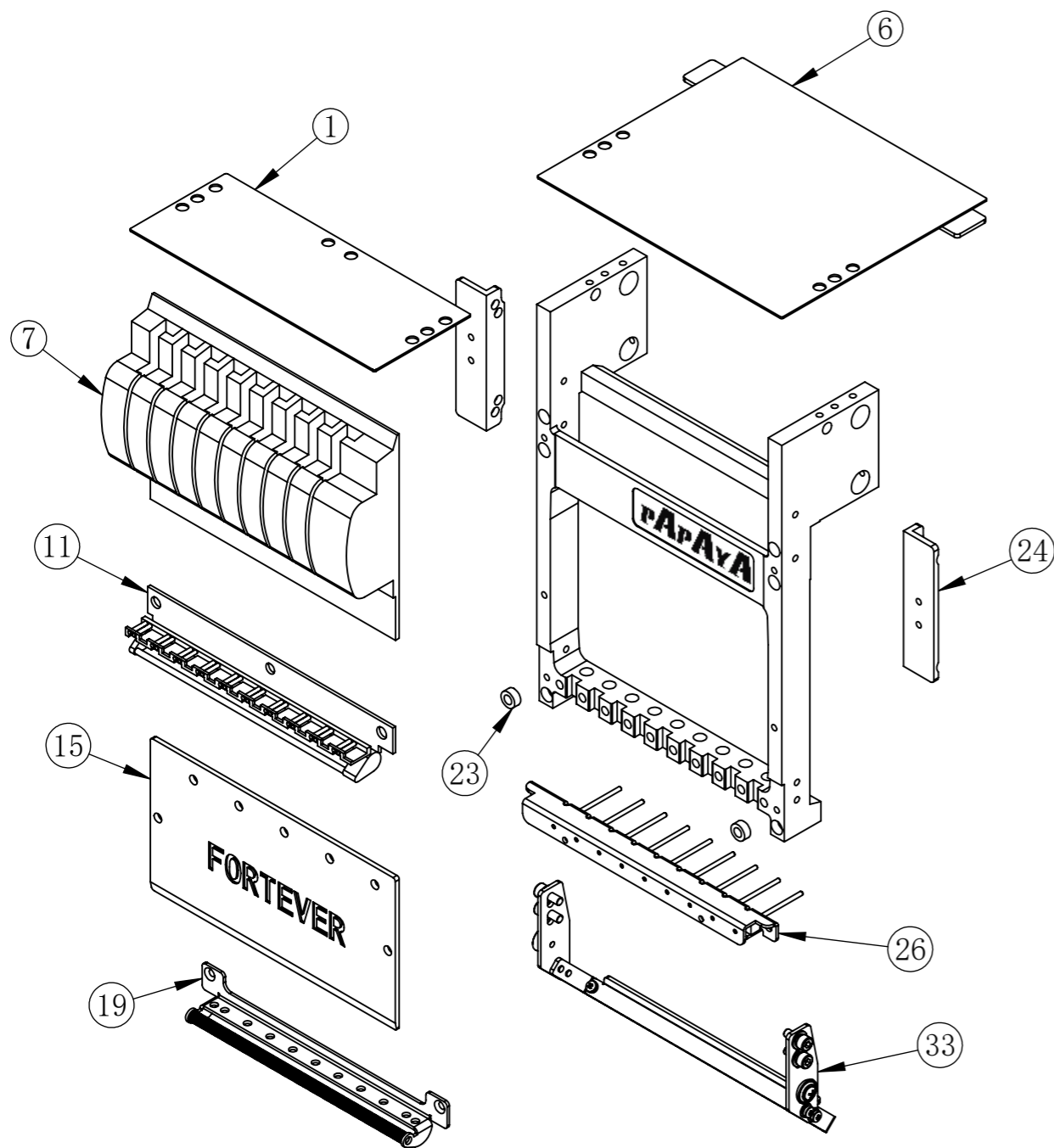
171011

7-1 针架1 Needle Bar Case 1

No.	Chinese Description	Description	Part No.	Qty
1	针杆架 9针	NEEDLE BAR CASE 9N	0102020001	1
2	针杆架 6针	NEEDLE BAR CASE 6N	0102020002	
3	针杆架 12针	NEEDLE BAR CASE 12N	0102020003	
4	针杆架 15针	NEEDLE BAR CASE 15N	0102020039	
5	针杆6.35*212	NEEDLE BAR	0102020004	1
6	上弹簧垫片	WSAHER		1
7	针杆连接销	NEEDLE BAR CONNECTING STU	0102020009	1
8	针夹(连螺钉)	NEEDLE CLAMP	0102020016	1
10	针夹螺钉	SCREW		1
13	针	NEEDLE		1
14	针杆下弹簧	COMPRESSION SPRING	0102020011	1
15	针杆上弹簧	Needle Bar Upper Spring (Needle Bar)	0102020005	1
16	挑线齿轮	BOSS	0102020021	1
18	针架开口轴衬L19	SPLIT COLLAR	0102020022	2
19	针架开口轴衬L16点5	SPLIT COLLAR	0102020022	2
20	针架开口轴衬L12点5	SPLIT COLLAR	0102020017	2
21	针杆架下导轨条 9N	Needle Bar Lower Guide Rail	0102020026	1
22	针杆架下导轨条 6N	Needle Bar Lower Guide Rail 6N	0102020027	
23	针杆架下导轨条 12N	Needle Bar Lower Guide Rail 12N	0102020028	
24	针杆架下导轨条 15N	Needle Bar Lower Guide Rail 15N	0102020042	
25	下毛毡垫 9N	FELT PACKING	0102020015	2
26	上死点固定块件	STOPPER UPPER POINT	0102020008	1
27	压脚调节套	Presser Foot Set Clamp	0102020013	1
28	压脚 56	PRESSER FOOT	0102020014	1
29	O形橡胶圈	NEEDLE BAR WASHER	0102020057	1
30	压脚开口轴衬	Presser Foot Bushing	0102020012	1
31	自扣	LEVER STOPPER	0102020032	1
32	自扣弹簧	TORSION SPRING	0102020033	1
33	挑线杆片	TAKE-UP LEVER	0102020019	1
34	瓷眼	THREAD GUIDE COLLAR	0102020020	1
35	弹簧挡杆 9N	SPRING HOOK BAR	0102020029	1
36	弹簧挡杆 6N	SPRING HOOK BAR 6N	0102020036	
37	弹簧挡杆 12N	SPRING HOOK BAR 12N	0102020037	
38	弹簧挡杆 15N	SPRING HOOK BAR 15N	0102020038	
39	针杆导板 9针	NEEDLE BAR GUIDE 9N	0102020023	1
40	针杆导板 6针	NEEDLE BAR GUIDE 6N	0102020024	
41	针杆导板 12针	NEEDLE BAR GUIDE 12N	0102020025	
42	针杆导板 15针	NEEDLE BAR GUIDE 15N	0102020041	
43	麻垫	DAMPER RING	0102020007	1
44	挑线杆导向轴 9N	GUIDE SHAFT	0102020018	2
45	挑线杆导向轴 6N	GUIDE SHAFT 6N	0102020034	
46	挑线杆导向轴 12N	GUIDE SHAFT 12N	0102020035	
47	挑线杆导向轴 15N	GUIDE SHAFT 15N	0102020040	

171011

7-2 Needle Bar Case 2 针架2



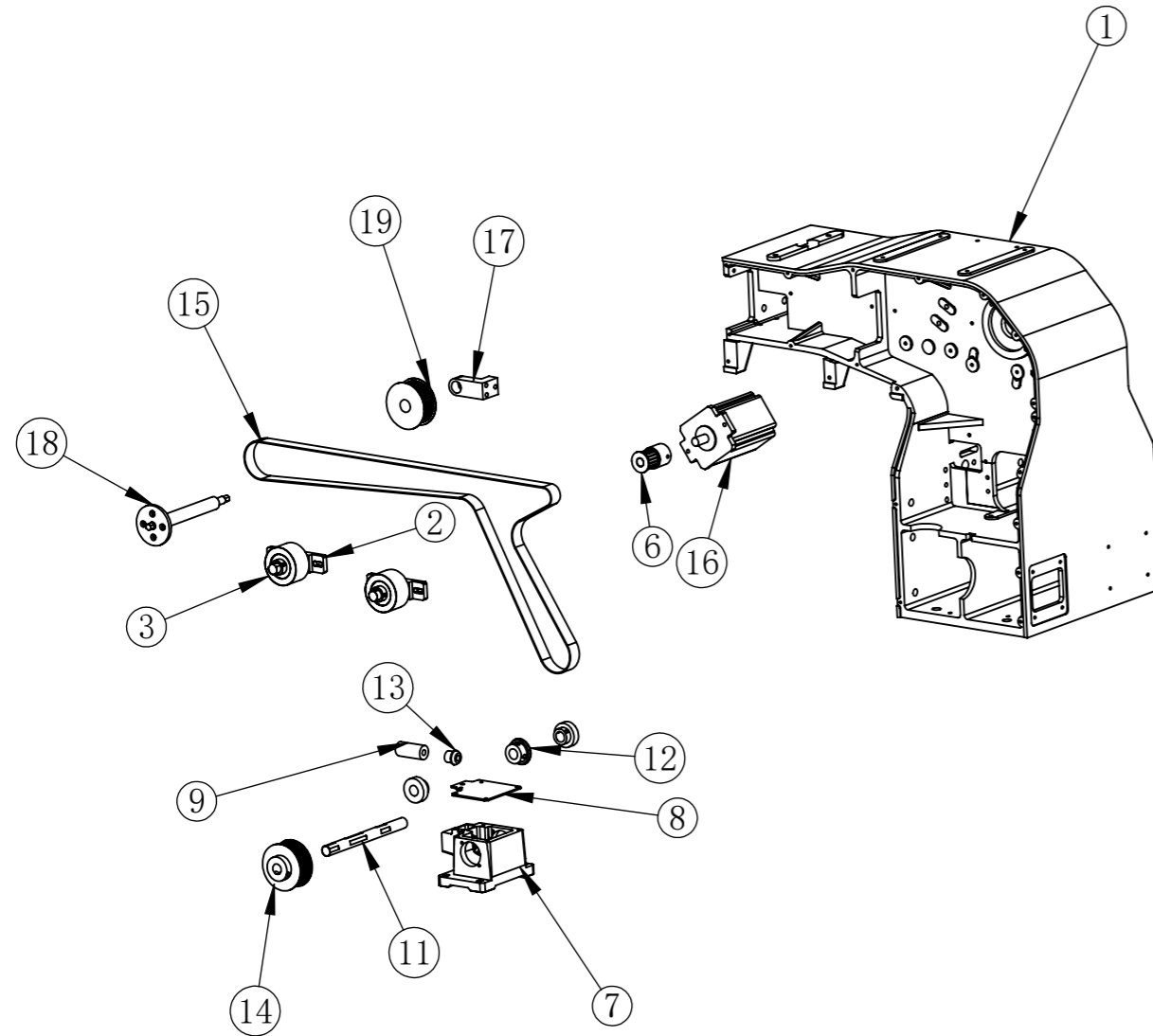
171013

7-2 Needle Bar Case 2 针架2

No.	Chinese Description	Description	Part No.	Qty
1	针架上隔板 9N	TOP COVER 9N	0102020053	1
2	针架上隔板 6N	TOP COVER 6N	0102020054	
4	针架上隔板 12N	TOP COVER 12N	0102020055	
5	针架上隔板 15N	TOP COVER 15N	0102020056	
6	针架上隔板W140	TOP COVER	0102020063	1
7	针架上面板 9N	TAKE-UP LEVER COVER 9N	0102020044	1
8	针架上面板 6N	TAKE-UP LEVER COVER 6N	0102020045	
9	针架上面板 12N	TAKE-UP LEVER COVER 12N	0102020046	
10	针架上面板 15N	TAKE-UP LEVER COVER 15N	0102020047	
11	中过线组件 9N带簧式	MIDDLE THREAD GUIDE 9N	0302020001	1
12	中过线组件 6N带簧式	MIDDLE THREAD GUIDE 6N	0302020002	
13	中过线组件 12N带簧式	MIDDLE THREAD GUIDE 12N	0302020003	
14	中过线组件 15N带簧式	MIDDLE THREAD GUIDE 15N	0302020004	
15	针架下面板 9N	UNDER COVER 9N	0102020048	1
16	针架下面板 6N	UNDER COVER 6N	0102020049	
17	针架下面板 12N	UNDER COVER 12N	0102020050	
18	针架下面板 15N	UNDER COVER 15N	0102020051	
19	针架下过线 9针	THREAD LOCK SPRING 9N	0104020024	1
20	针架下过线 6针	THREAD LOCK SPRING 6N	0104020025	
21	针架下过线 12针	THREAD LOCK SPRING 12N	0104020026	
22	针架下过线 15针	THREAD LOCK SPRING 15N	0104020027	
23	垫圈D9d5H4	WASHER		2
24	针架侧面支架	COVER BRACKET		2
25	面线架组件 9针 左置	UPPER THREAD LOCK 9N LEFT	0302050001	
26	面线架组件 9针 右置	UPPER THREAD LOCK 9N RIGHT	0302050002	1
27	面线架组件 6针 左置	UPPER THREAD LOCK 6N LEFT	0302050003	
28	面线架组件 6针 右置	UPPER THREAD LOCK 6N RIGHT	0302050004	
29	面线架组件 12针 左置	UPPER THREAD LOCK 12N LEFT	0302050005	
30	面线架组件 12针 右置	UPPER THREAD LOCK 12N RIGHT	0302050006	
31	面线架组件 15针 左置	UPPER THREAD LOCK 15N LEFT	0302050007	
32	面线架组件 15针 右置	UPPER THREAD LOCK 15N RIGHT	0302050008	
33	下毛刷组件 9N	BASEUPPER THREAD HOLDER 9N	0302020005	1
34	下毛刷组件 6N	BASEUPPER THREAD HOLDER 6N	0302020006	
35	下毛刷组件 12N	BASEUPPER THREAD HOLDER 12N	0302020007	
36	下毛刷组件 15N	BASEUPPER THREAD HOLDER 15N	0302020008	

171013

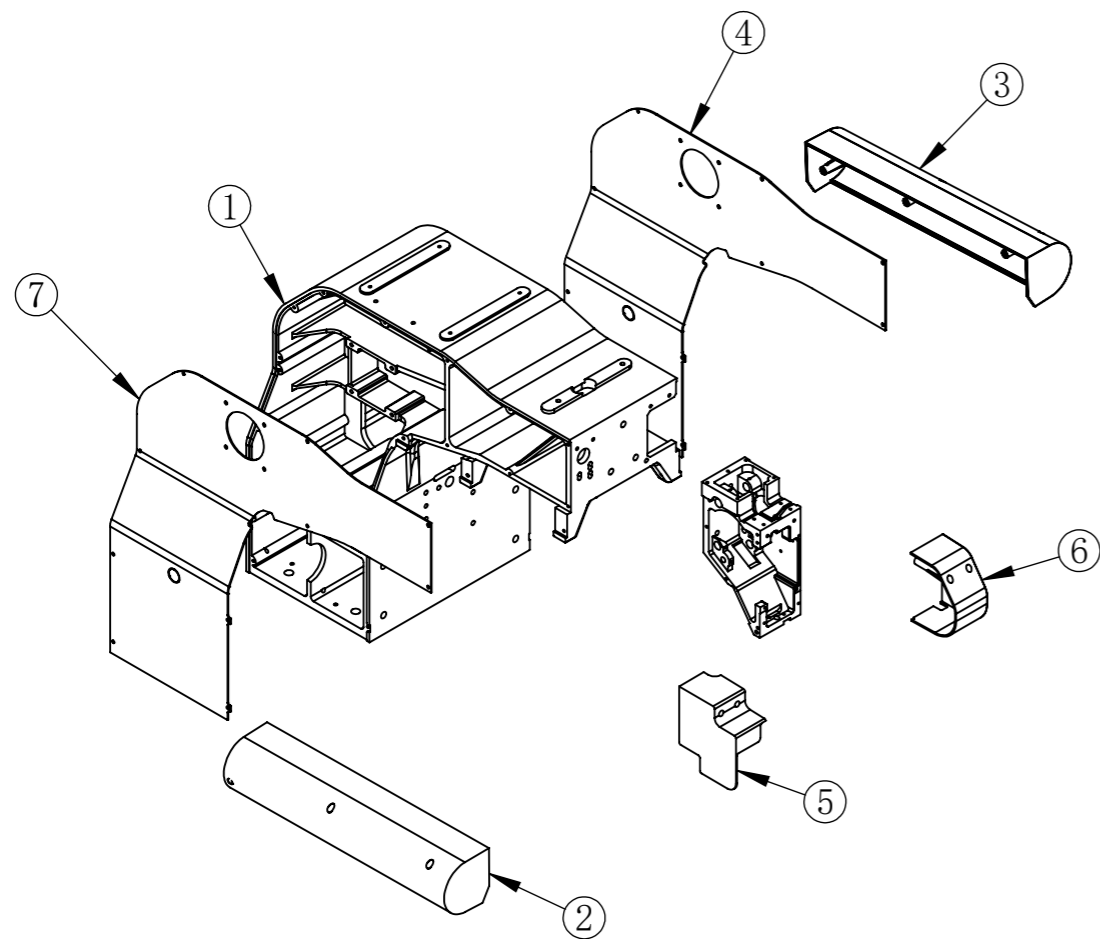
8. Gear Box 齿轮箱



8. Gear Box 齿轮箱

No.	Chinese Description	Description	Part No.	Qty
1	小马头机身	Small Body	0106110001	1
2	主皮带涨紧轮座	Main Belt Sheet Seat	0106250010	2
3	涨紧轮装配体			2
6	主马达皮带轮5ML53d12 T17	Timing Pulley	0106250001	1
7	齿轮箱	Gear Box	0106030008	1
8	伞齿箱盖板	Gear Box Plate	0106030015	1
9	伞齿箱粉末套	Gear Box Powder Set	0103030009	1
11	齿轮箱横轴	Gear Box Axis	0106030013	1
12	大伞齿	Big Geaar	0102030004	1
13	小伞齿	Small Gear	0102030005	1
14	皮带轮5M34PW25d15	Timing Pulley	0106250005	1
15	主皮带5ML1575W20	Timing Belt	0204030003	1
16	主电机	Motor		1
17	机头箱轴承座	Head Bearing	0106010001	1
18	机头箱皮带轮轴	Head Belt Pulley	0106250007	1
19	皮带轮5M34PW25d18	Timing Pulley	0106250006	1

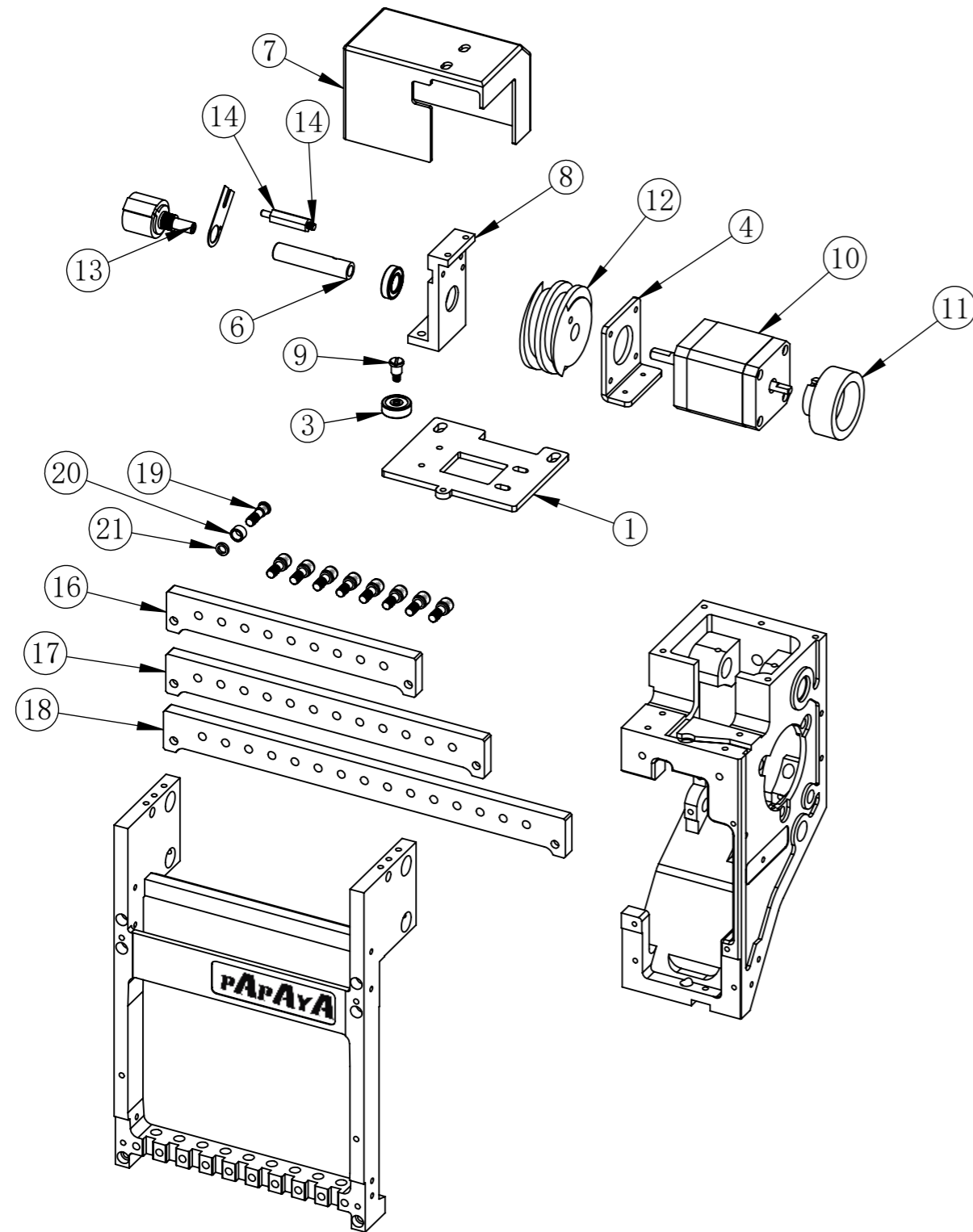
9. Machine Cover 机器罩盖



9. Machine Cover 机器罩盖

No.	Chinese Description	Description	Part No.	Qty
1	小马头机身	Small Body	0106110001	1
2	Y驱动罩壳（左）	Y Cover Shell-L	0106160008	1
3	Y驱动罩壳	Y Cover Shell-R	0106160009	1
4	小马头侧盖板-右	Horse The Side Cover-R	0106110004	1
5	机头箱轴承座罩壳-左	Head Bearing Housing-L	0106010021	1
6	机头箱轴承座罩壳-右	Head Bearing Housing-R	0106010021	1
7	小马头侧盖板-左	Horse The Side Cover-L	0106110003	1

10 COLOR CHANGE 换色



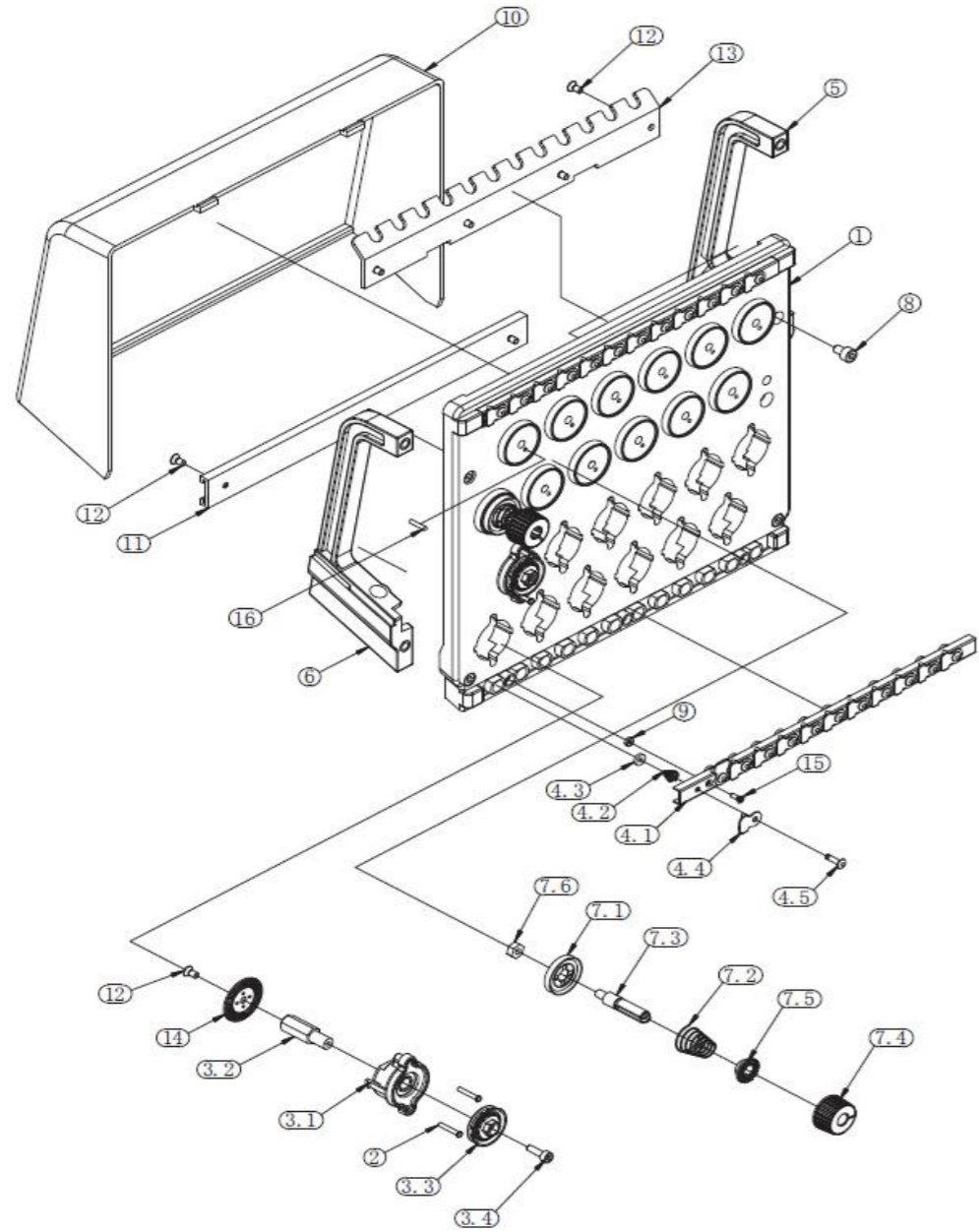
170313

10 COLOR CHANGE 换色

No.	Chinese Description	Description	Part No.	Qty
1	换色凸轮安装底板	Color Change Base	0106010008	1
2	轴承6800z	Bearing	0202010011	1
3	轴承606z	Bearing	0202010012	1
4	换色马达座	Motor Base	0106010004	1
6	电位器铜套	Bushing	0106010018	1
7	换色凸轮塑料罩	Cover	0106010009	1
8	换色轴承座	Bearing Plate	0106010003	1
9	换色轴承销	Pin	0106010006	1
10	电机 42H53H-1206-MTJ02	Motor	0206014001	1
11	电机手柄	Handle	0106010007	1
12	换色 凸轮	Cam	0106010002	1
13	电位器	Potentiometer	0207020001	1
14	电位器螺栓	Potentiometer Fixed Bolt	0106010005	1
15	电位器支撑板	Potentiometer Support	0106010020	1
16	9针换色滚珠板	Guide Plate for 9-Needle	0106010011	1
17	12针换色滚珠板	Guide Plate for 12-Needle	0106010010	1
18	15针换色滚珠板	Guide Plate for 15-Needle	0106010012	1
19	分段销	Pin	0106010014	9
20	换色滚珠	Collar	0106010013	9
21	垫片	Bushing	0106010015	9

170313

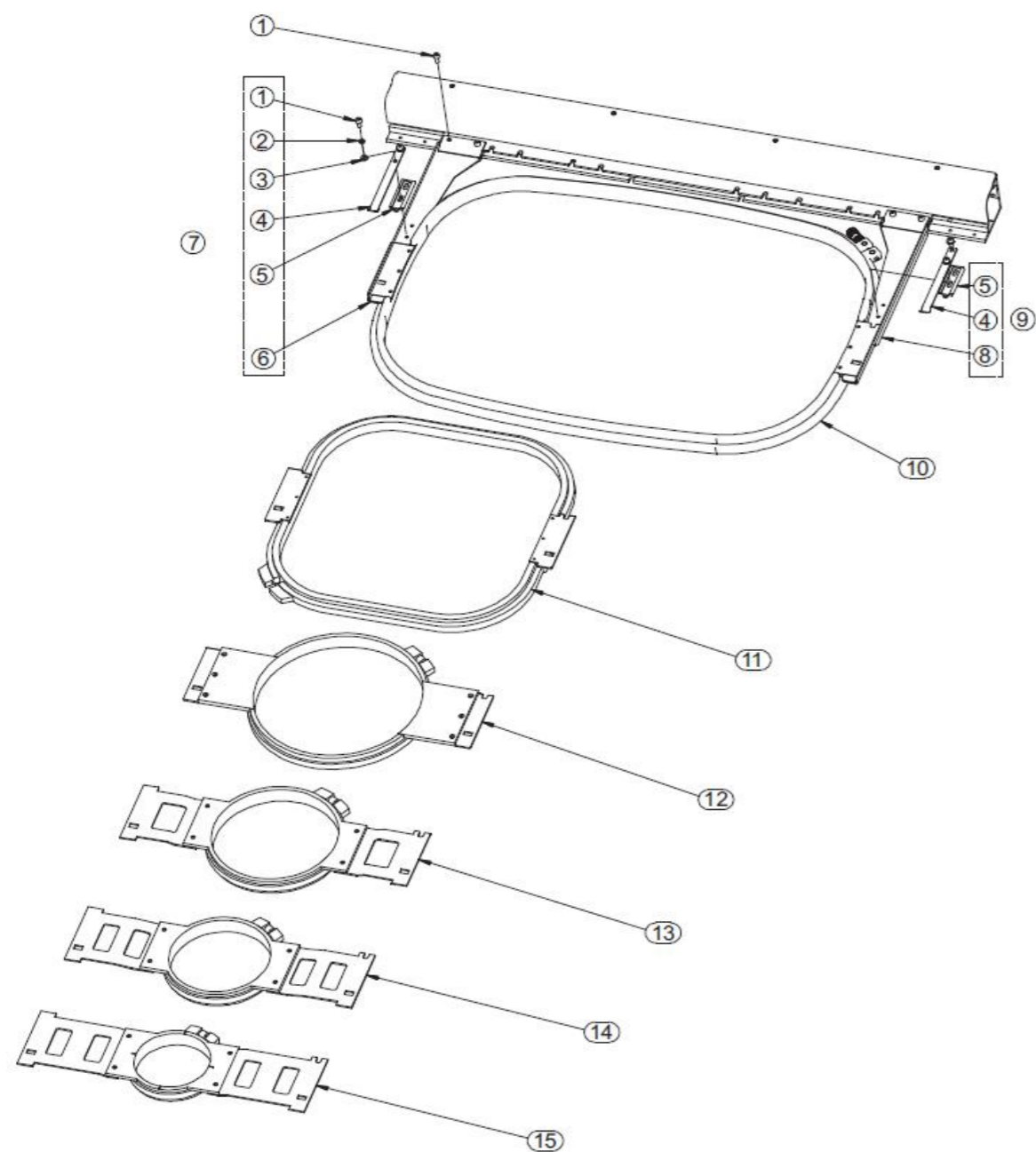
12. Thread Tension Base 夹线器组件



12. Thread Tension Base 夹线器组件

No.	Chinese Description	Description	Part No.	Qty
12.1	夹线器总成-余美真6针	Thread lead plate-06 For 06-Needle	305060005	1SET/H
	夹线器总成-余美真9针	Thread lead plate-06 For 09-Needle	305060006	
	夹线器总成-余美真12针	Thread lead plate-12 For 12-Needle	305060007	
	夹线器总成-余美真15针	Thread lead plate-15 For 15-Needle	305060008	
12.1	夹线器总成-集美6针	Thread lead plate-06 For 06-Needle	305060001	1SET/H
	夹线器总成-集美9针	Thread lead plate-09 For 09-Needle	305060002	
	夹线器总成-集美12针	Thread lead plate-12 For 12-Needle	305060003	
	夹线器总成-集美15针	Thread lead plate-15 For 15-Needle	305060004	
	夹线器总成-金龙鼎6针	Thread lead plate-06 For 06-Needle	305060005	
	夹线器总成-金龙鼎9针	Thread lead plate-09 For 09-Needle	305060006	
	夹线器总成-金龙鼎12针	Thread lead plate-12 For 12-Needle	305060007	
	夹线器总成-金龙鼎15针	Thread lead plate-15 For 15-Needle	305060008	
	夹线器总成-丹阳6针	Thread lead plate-06 For 06-Needle	305060009	
	夹线器总成-丹阳9针	Thread lead plate-09 For 09-Needle	305060010	
	夹线器总成-丹阳12针	Thread lead plate-12 For 12-Needle	305060011	
	夹线器总成-丹阳15针	Thread lead plate-15 For 15-Needle	305060012	

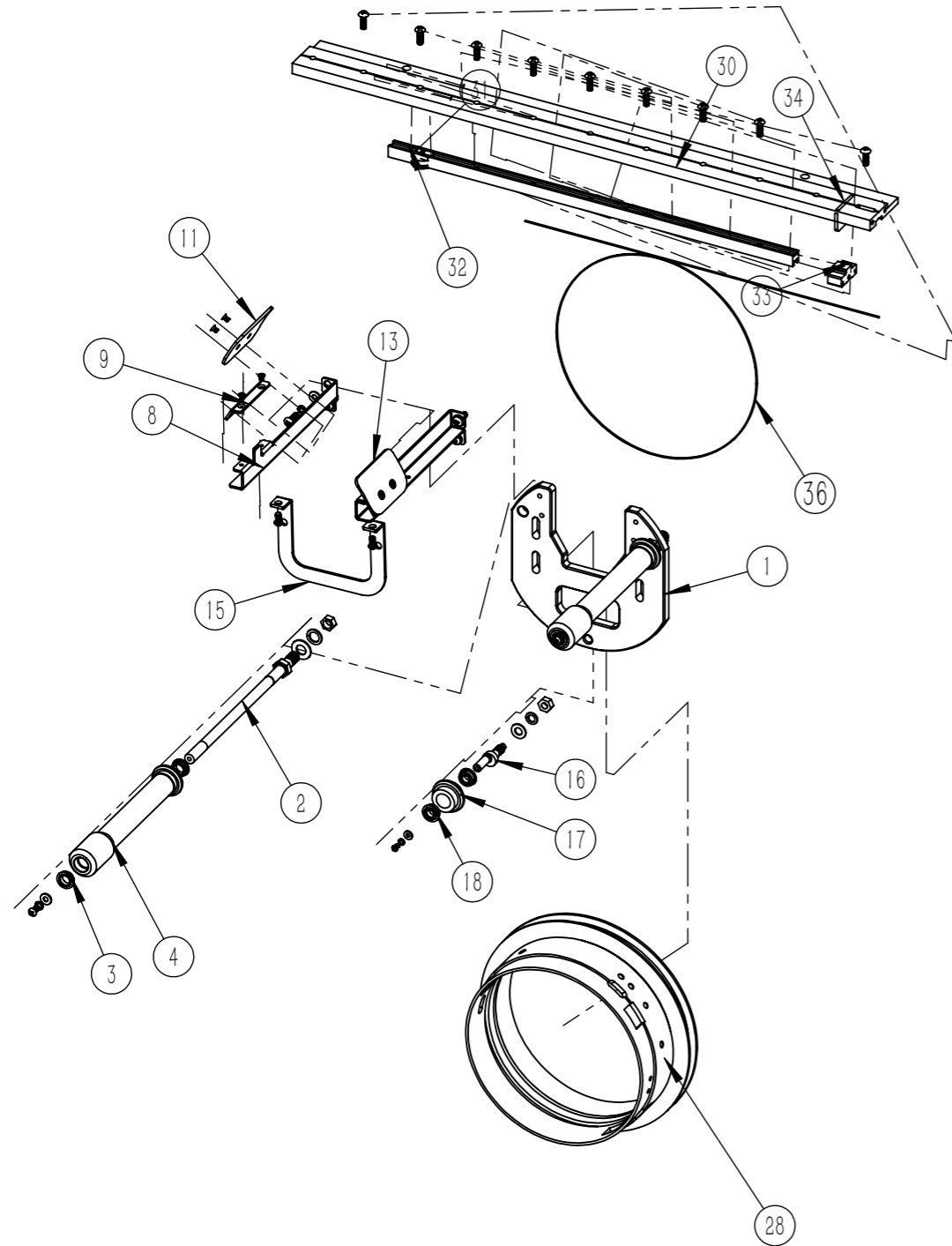
16. Embroidery Frame 花架



16. Embroidery Frame 花架

No.	Chinese Description	Description	Part No.	Qty
16	台州绿色花架组件(含5个)		305230001	1
	台州灰色花架组件(含5个)		305230002	
16.1	内六角头柱头螺钉M4*10	Hex socket head screw M4*10	201010410-1	4
16.2	弹垫M4	Spring washer M4	201220410-1	4
16.3	垫圈M4	Washer M4	201210410-2	4
16.4	左扶手组件	Frame bracket set-L	305200001	1
16.5	右扶手组件	Frame bracket set-R	305200002	1
16.6	花架540*360	Rectangle frame-540x360	305230006	1
16.7	花架290*290	Rectangle frame-290x290	305230005	1
16.8	花架200	Round frame-200	305230004	1
16.9	花架150	Round frame-150	305230003	1
17	花架120	Round frame-120	305230002	1
17.1	花架90	Round frame-90	305230001	1
17.2	绣框连接板		105190001	1

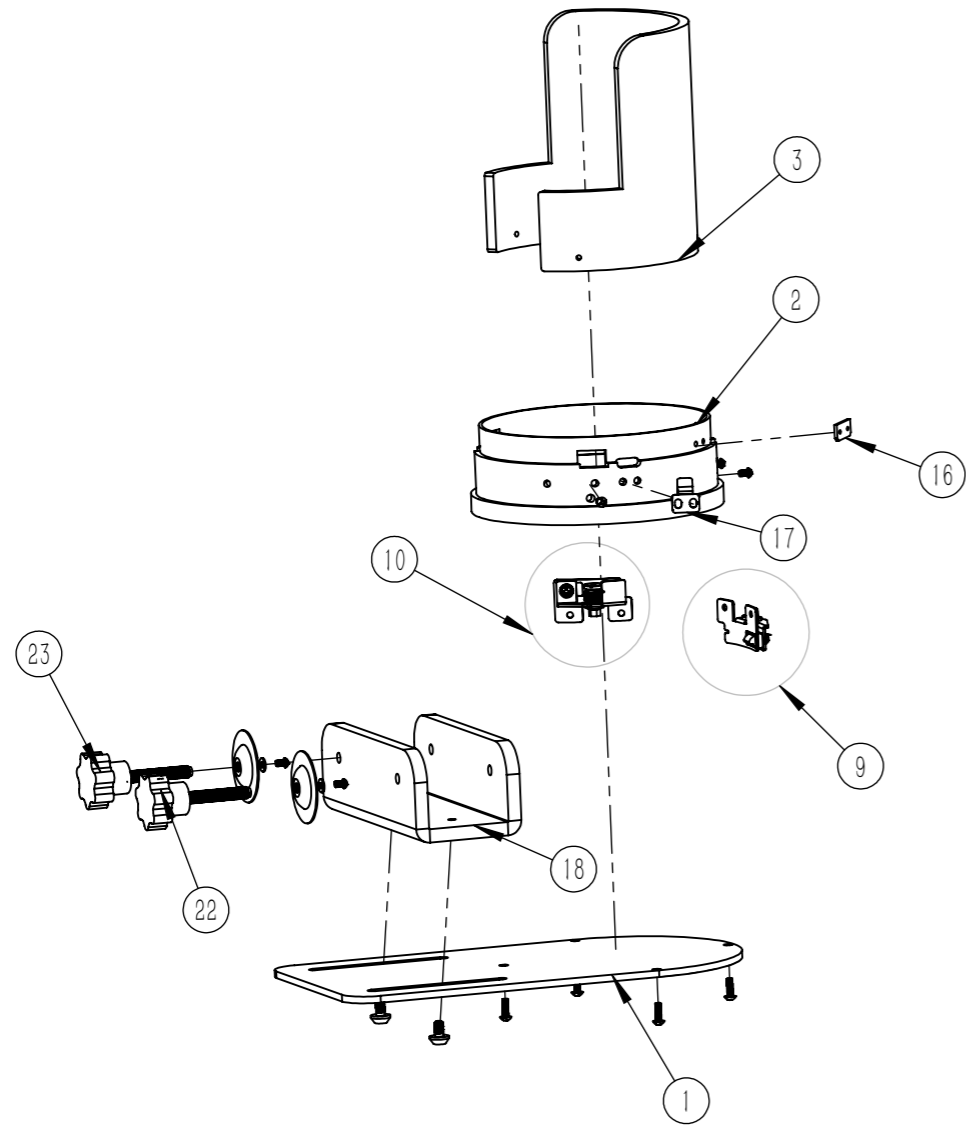
17-1. Cap Frame parts 帽驱动组件



17-1. Cap Frame parts 帽驱动组件

No.	Chinese Description	Description	Part No.	Qty
1	帽驱动底板	Cap frame main support	0103240021	1
2	导向轮轴	Shaft	0103240024	2
3	轴承MFL2622	Bearing MFL2622	0202010037	4
4	尼龙棒	Nylon rod	0103240023	2
8	导向支撑左	Support-L	0103240025	1
9	导向板调节座	Support plate	0103240028	1
11	帽导向板	Minor support plate	0103240029	1
12	导向支撑右	Support-R	0103240026	1
15	左右支撑加强版	U stand	0103240036	1
16	偏心销	Pin shaft	0103240004	1
17	尼龙滚轮	Trolley	0103240031	1
18	轴承MFL2822	Bearing MFL2822	0202010036	2
28	帽圈	Cap tube	0103240022	1
30	马头机驱动板L490	Cap frame support plate	0105150034	1
31	驱动滑轮M4XD17T10	Nylon wheel	0103240042	1
32	帽驱动板导轨	Plastic bar	0103240044	1
33	钢丝张紧块	Adjustment slider	0103240039	1
34	驱动板调节座 (28X18X2.5)	Adjustment slider presser plate	0103240041	1
36	钢丝	Steel wire	0204060001	1

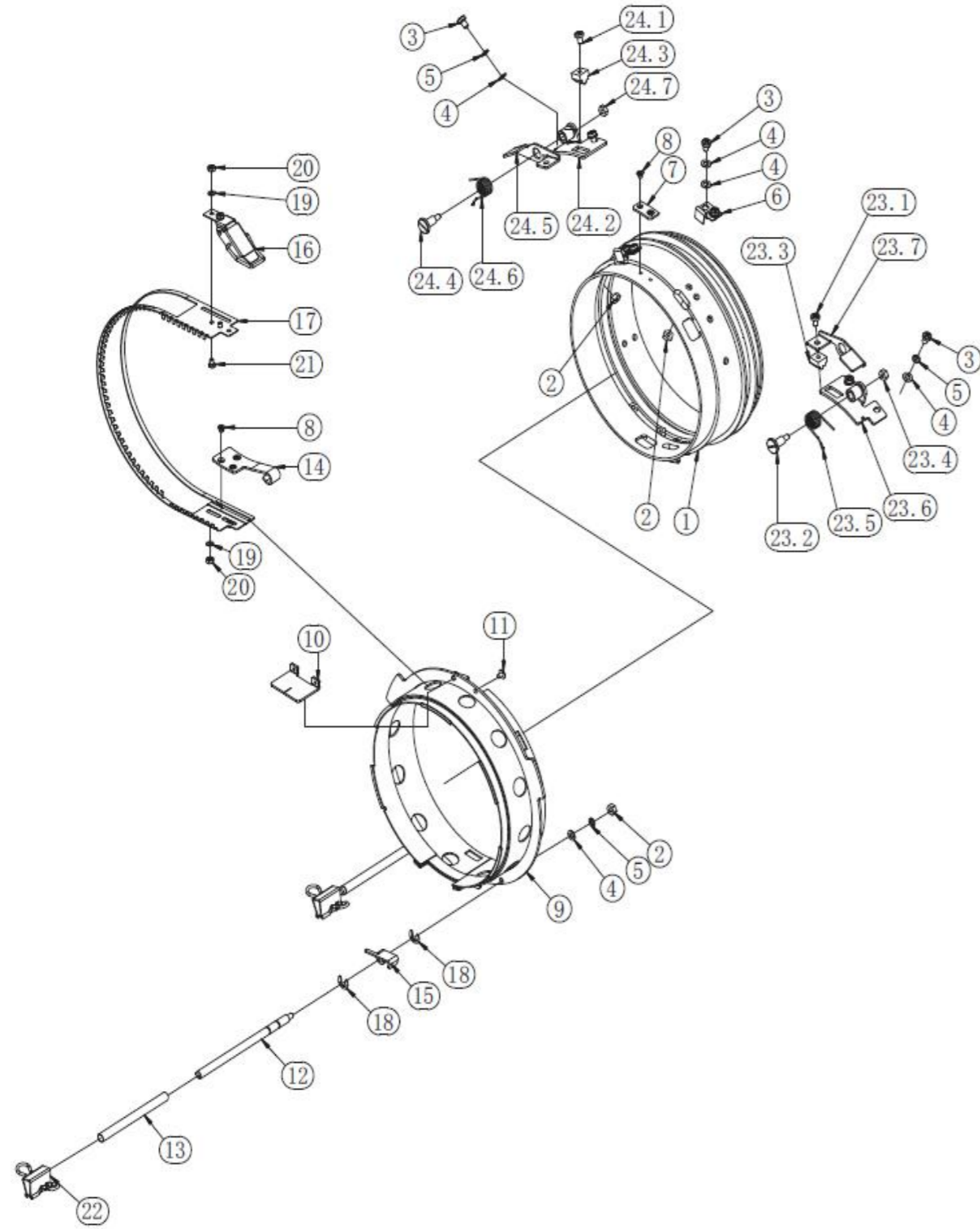
17-2. Cap Frame parts 帽座组件



17-2. Cap Frame parts 帽座组件

No.	Chinese Description	Description	Part No.	Qty
1	帽座底板	Cap frame main support	0103240001	1
2	帽座帽圈	Cap tube	0103240005	1
3	帽檐	Brim of a hat	0103240006	1
9	帽圈卡扣组件A	Cap casing A	0304240006	1
10	帽圈卡扣组件B	Clamp base B	0304240007	2
16	帽圈固定块	Positioning block	0103240010	1
17	帽圈弹簧片	Shrapnel	0103240024	3
18	U型板	U shape plate	0103240003	1
22	帽座手柄A	Handle A	0103240011	1
23	帽座手柄B	Handle B	0103240012	1

18. Cap Stand Frame 帽架



18. Cap Stand Frame 帽架

No.	Chinese Description	Description	Part No.	Qty
1	帽管	Cap tube		
2	螺母M4	Nut M4		
3	十字槽扁圆头螺钉	Truss head screws M4*6	201160406-3	
4	垫圈M4	Washer M4	201210410-2	
5	弹垫M4	Spring washer M4		
6	弹片	Shrapnel		
7	定位块	Positioning block		
8	十字槽沉头螺钉M3*4	Counterbore screws M3*4	201130304-2	
9	夹	Clamp		
10	定位块	Positioning block		
11	六角头螺钉M3*4	Hex head cap screws M3*4	201460304-1	
12	帽架支柱	Hat rack strut		
13	橡胶衬套	Rubber bushing		
14	锁扣	Tie head cap		
15	锁钩	Lock hook		
16	锁	Lock		
17	夹帽片	Cap strapping rod		
18	E型圈	E-Ring-6		
19	垫圈M4	Washer M4	201210410-2	
20	螺母M3	Nut M3	201350322	
21	六角头螺钉M3*4	Hex head cap screws M3*4	201460304-1	
22	夹子	Clip		
23	帽盖组件A	Cap casing A		
23.1	十字槽扁圆头螺钉	Truss head screws M4*6	201160406-3	
23.2	带卡盘螺丝	Screw with chucker		
23.3	帽盖A	Cap casing		
23.4	螺母M4	Nut M4	201350422	
23.5	收宿弹簧	Collet spring		
23.6	夹座	Clamp base		
23.7	夹座A	Clamp base A		
24	夹座B	Clamp base B		
24.1	十字槽扁圆头螺钉	Truss head screws M4*6	201160406-3	
24.2	夹座B	Clamp base B		
24.3	帽盖组件	Cap casing		
24.4	带卡盘螺丝	Screw with chucker		
24.5	帽盖B	Cap casingB		
24.6	收宿弹簧B	Collet spring B		
24.7	螺母M4	Nut M4	201350422	