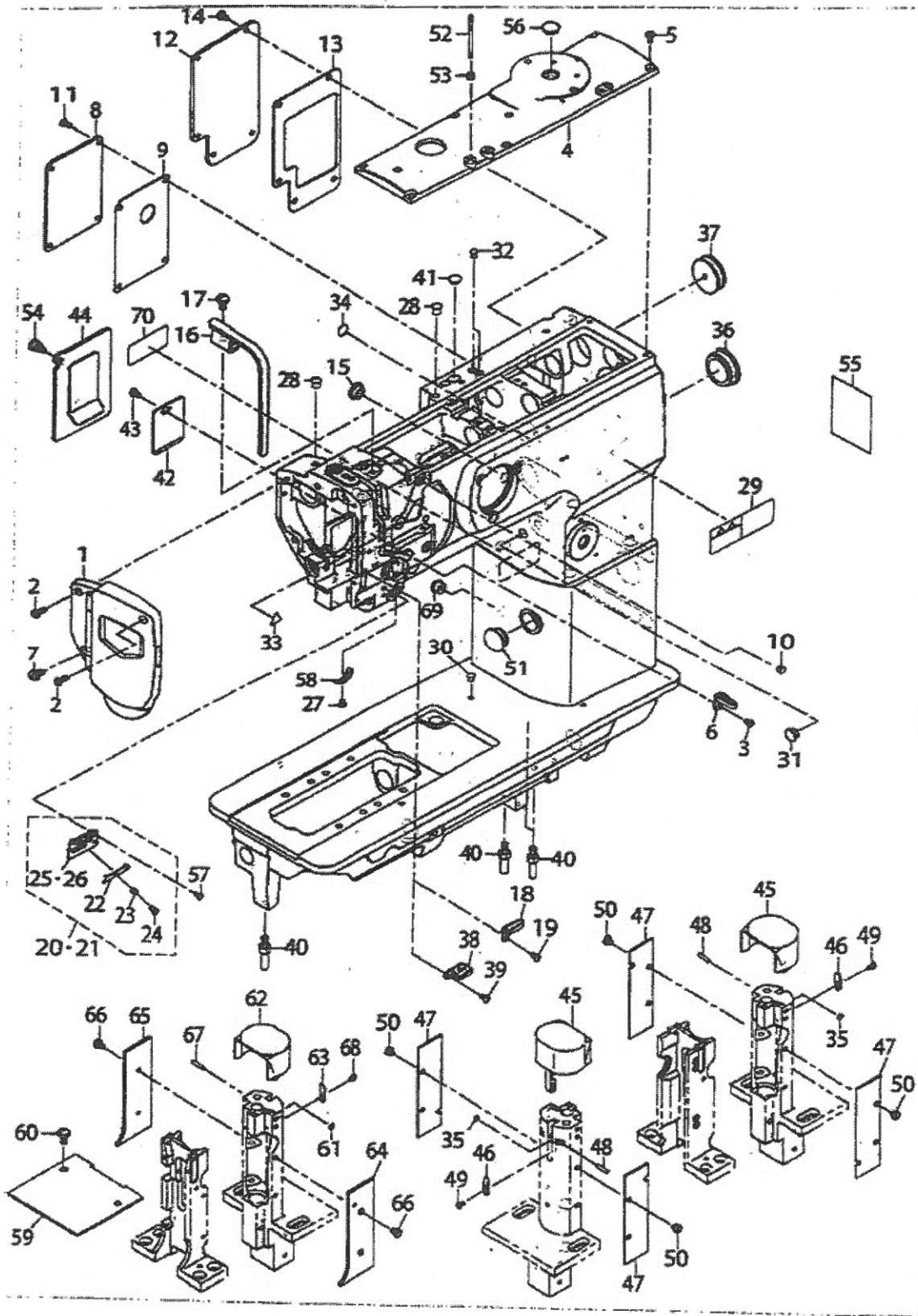


FRAME & MISCELLANEOUS COVER COMPONENTS



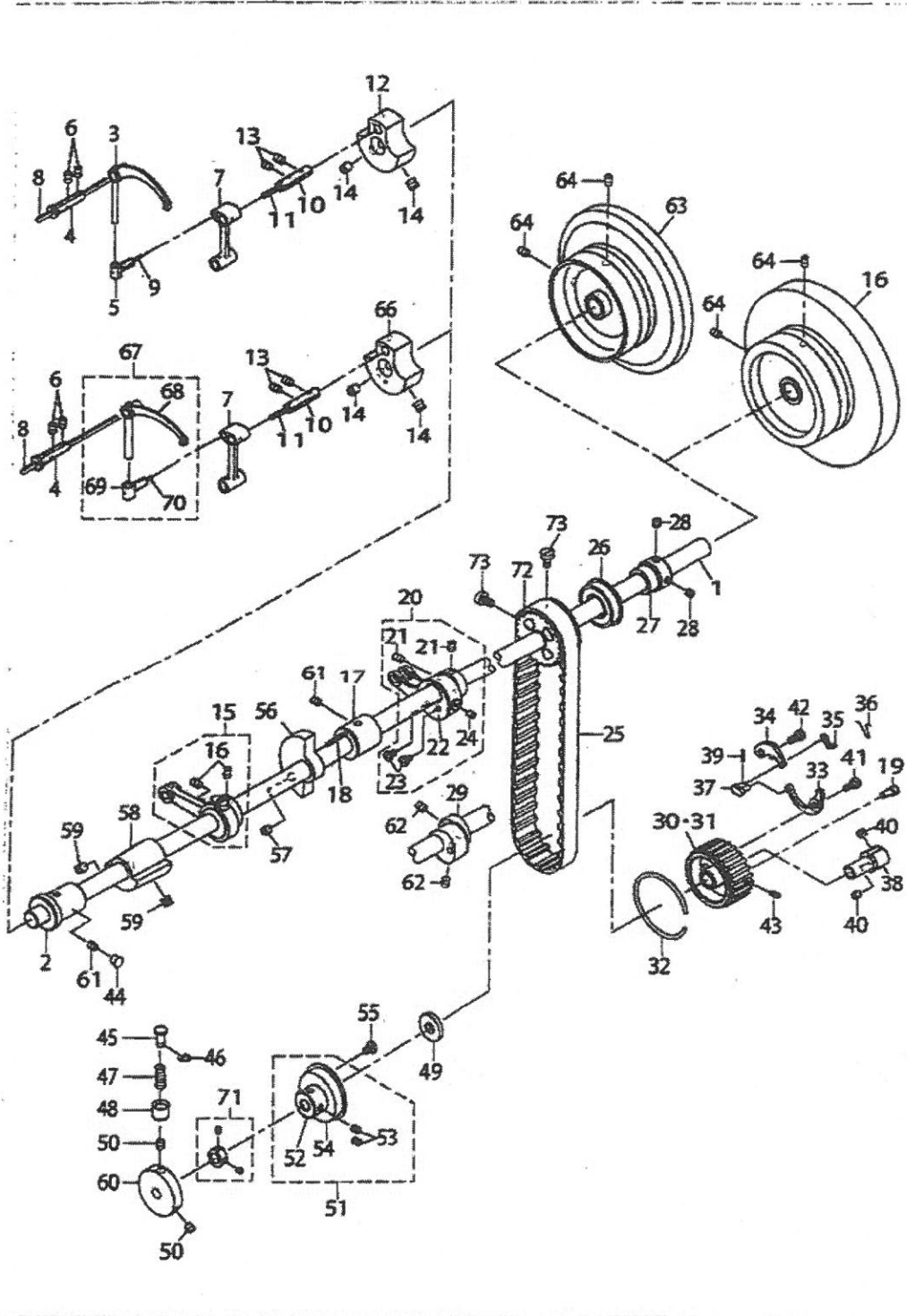
FRAME & MISCELLANEOUS COVER COMPONENTS

No.	Parts No.	Parts name	Remarks	Level	Cons	Qty
1	40016798	FACE PLATE ASM.				1
2	SS4111215SP	SCREW 11/64-40 L=12				2
3	SS5890810SP	SCREW 9/64-40 L=6				1
4	21331301	TOP COVER B				1
5	SS4110815SP	SCREW 11/64-40 L=8				6
6	40108674	THREAD GUIDE				1
7	SS4150915SP	SCREW 15/64-28 L=9				1
8	21437108	WINDOW PLATE E	FOR PLC-1760L			1
9	21437306	WINDOW PLATE E PACKING	FOR PLC-1760L			1
10	TA0820504R0	CAP				2
11	SS4110815SP	SCREW 11/64-40 L=8	FOR PLC-1760L			4
12	21331806	WINDOW PLATE B				1
13	21332802	WINDOW PLATE PACKING B				1
14	SS4110815SP	SCREW 11/64-40 L=8				5
15	TA1250504R0	RUBBER PLUG				1
16	21331808	BALANCE COVER				1
17	SS7150910TP	SCREW 15/64-28 L=9				1
18	10101400	THREAD GUIDE C	FOR PLC-1710,PLC-1780			1
19	SS2090710TP	SCREW 9/64-40 L=7.2	FOR PLC-1710,PLC-1780			1
20	21408554	THREAD GUIDE ASM.	FOR PLC-1780,PLC-1760L			1
21	40039838	THREAD GUIDE PLATE ASM.	FOR PLC-1710			1
22	17912106	NEEDLE THREAD PRESSER PLATE		*		1
23	B1132521000	THREAD PRESSER PLATE SPRING		*		1
24	SD0380551SL	HINGE SCREW D=3.80 H=5.5		*		1
25	21408505	THREAD GUIDE PLATE	FOR PLC-1760,PLC-1780L	*		1
26	40039839	THREAD GUIDE PLATE	FOR PLC-1710	*		1
27	SS7090520TP	SCREW 9/64-40 L=4.5				1
28	TA0750704R0	RUBBER PLUG				2
29	CM301300001	SAFETY LABEL				1
30	TA0550604R0	RUBBER PLUG				1
31	TA1050504R0	RUBBER PLUG				1
32	TA0550604R0	RUBBER PLUG				2
33	CM300200001	ATTENTION SEAL				1
34	22801805	GROUND MARK				1
35	WZ0320290UZ	WASHER 3.2X6.5X0.15	FOR PLC-1780,PLC-1760L			2
36	22819100	CAP				1
37	10201200	RUBBER PLUG				1
38	40108675	FRAME THREAD GUIDE	FOR PLC-1760L			1
39	SS2090710TP	SCREW 9/64-40 L=7.2	FOR PLC-1760L			1
40	22802601	BED SCREW STUD				4
41	TA1250504R0	RUBBER PLUG				1
42	21332309	SIDE COVER				1
43	SS4110815SP	SCREW 11/64-40 L=8				1
44	21331756	WINDOW PLATE A ASM.	FOR PLC-1710,PLC-1780			1
45	40038688	HOOK COVER ASM.	FOR PLC-1760,PLC-1760L			2
46	40017269	SLIDE PLATE	FOR PLC-1780,PLC-1760L			2
47	40017316	HOOK SHAFT SADDLE COVER	FOR PLC-1780,PLC-1760L			4

FRAME & MISCELLANEOUS COVER COMPONENTS

No.	Parts No.	Parts name	Remarks	Level	Cons	Qty
48	40038891	HOOK COVER HINGE SHAFT	FOR PLC-1760,PLC-1760L			2
49	SS4080620TP	SCREW 1/8-44 L=6	FOR PLC-1760,PLC-1760L			2
50	SS6110480SP	SCREW 11/64-40 L=4.3				8
51	TA2100904R0	RUBBER PLUG				1
52	40052262	THREAD GUIDE PIN				1
53	NS8620310SP	NUT 3/16-32				1
54	21331202	SETSCREW	FOR PLC-1710,PLC-1760			1
55	40152631	LUBRICATION SUPPLEMENT				1
56	TA1450404R0	RUBBER PLUG D=14.5 L=4	FOR PLC-1710,PLC-1760			1
57	SS2090710TP	SCREW 9/64-40 L=7.2				1
58	B3138512000	TAKE-UP SPRING ADJUSTING PLATE				1
59	40039831	BED COVER	FOR PLC-1710			1
60	SM4061001SB	SCREW M6 L=10	FOR PLC-1710			2
61	WZ0320290UZ	WASHER 3.2X6.5X0.15	FOR PLC-1710			1
62	40038888	HOOK COVER ASM.	FOR PLC-1710			1
63	40017269	SLIDE PLATE	FOR PLC-1710			1
64	40017264	FEED LEVER BASE COVER A	FOR PLC-1710			1
65	40017265	FEED LEVER BASE COVER B	FOR PLC-1710			1
66	SS6090620SP	SCREW 9/64-40 L=6	FOR PLC-1710			4
67	40038891	HOOK COVER HINGE SHAFT	FOR PLC-1710			1
68	SS4080620TP	SCREW 1/8-44 L=6	FOR PLC-1710			1
69	TA1100804R0	PLUG				1
70	40094561	SEWING MACHINE LABEL (EU)	FOR EU			1

UPPER SHAFT LOWER SHAFT DRIVING & BALANCE COMPONENTS



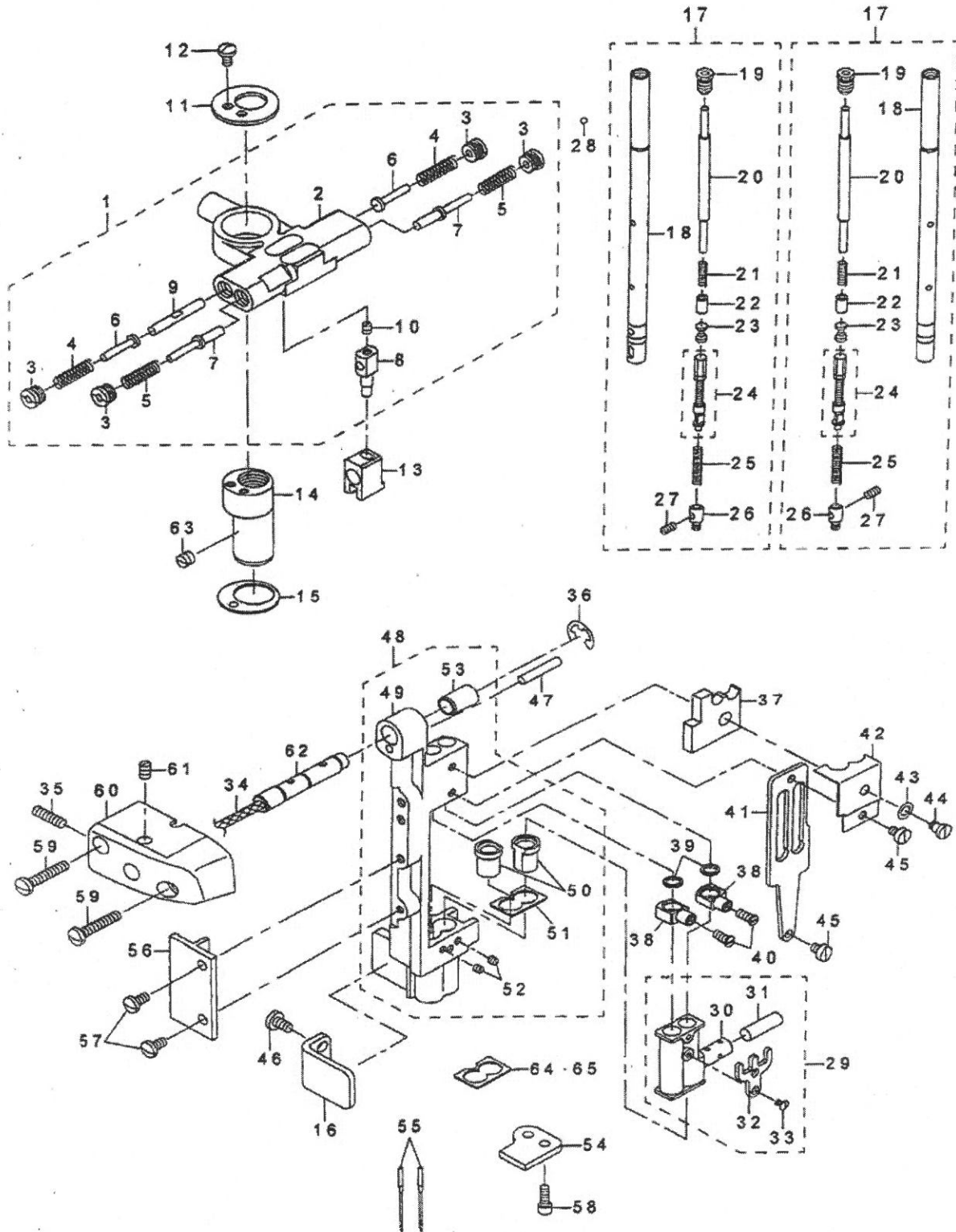
UPPER SHAFT, LOWER SHAFT DRIVING & BALANCE COMPONENTS

No.	Parts No.	Parts name	Remarks	Level	Cons	Qty
1	21332705	UPPER SHAFT				1
2	21333000	UPPER SHAFT FRONT METAL				1
3	23001001	THREAD TAKE-UP LEVER	FOR PLC-1710, PLC-1760			1
4	B1906051000	TAKE-UP LEVER PIN				1
5	21333307	BALANCE SLIDE SHAFT	FOR PLC-1710, PLC-1760			1
6	SS8150822TP	SCREW 15/64-28 L=8				2
7	40038704	NEEDLE BAR CRANK ROD				1
8	CQ303080000	OIL WICK				0.2
9	CQ202000000	OIL WICK	FOR PLC-1710, PLC-1760			0.03
10	B1210051000	NEEDLE BAR CRANK PIN				1
11	CQ505000000	OIL WICK				0.03
12	21332507	COUNTER WEIGHT (A) (36MM)	FOR PLC-1710, PLC-1760			1
13	SS8150822TP	SCREW 15/64-28 L=8				2
14	SM8080812TP	SCREW M8X8				2
15	40197297	UPPER_FEED_CAM_ASM	FOR PLC-1710, PLC-1760			1
16	SS8660810TP	SCREW 1/4-40 L=8		*		2
17	21333109	UPPER SHAFT INNER METAL				1
18	CQ202000000	OIL WICK				0.2
19	21387907	ADJUSTING PIN (1.2)				1
20	40197296	HORIZONTAL_FEED_ROD_ASM	FOR PLC-1710, PLC-1760			1
21	SS8660810TP	SCREW 1/4-40 L=8		*		2
22	21353068	HORIZONTAL FEED CAM COVER		*		1
23	SS7110710SP	SCREW 11/64-40 L=7		*		2
24	21387402	FELT		*		1
25	40038694	TIMING BELT (960)				1
26	B1203512000	BUSHING REAR				1
27	21402300	UPPER SHAFT BEARING HOOK				1
28	SM8060602TP	SCREW M6X6				2
29	40019905	TRIANGULAR CAM A	FOR PLC-1760L			1
30	40038703	LOWER SPROCKET	SELECTIVE PARTS			1
31	21387501	LOWER SPROCKET	SELECTIVE PARTS			1
32	B1214019000	SPROCKET RING				1
33	21387709	SAFETY CLUTCH SPRING				1
34	21387600	SAFETY CLUTCH HOOK				1
35	B1308055000	SAFETY CLUTCH COUNTER-HOOK				1
36	40113224	COUNTER HOOK SPRING				1
37	B1310055000	SAFETY CLUTCH SMALL LINK				1
38	21387808	SAFETY BASE				1
39	B1314055000	SAFETY CLUTCH SMALL LINK PIN				1
40	SS8660612TP	SCREW 1/4-40 L=6				2
41	SD0640322TP	HINGE SCREW D=6.35 H=3.2				1
42	SD0640322TP	HINGE SCREW D=6.35 H=3.2				1
43	SS8111010TP	SCREW 11/64-40 L=9.5				1
44	TA0750704R0	RUBBER PLUG				1
45	B1312563000A	SAFETY CLUTCH PUSH BUTTON				1
46	RE0500000K0	E-RING				1
47	B1639051000	SPRING				1

UPPER SHAFT, LOWER SHAFT DRIVING & BALANCE COMPONENTS

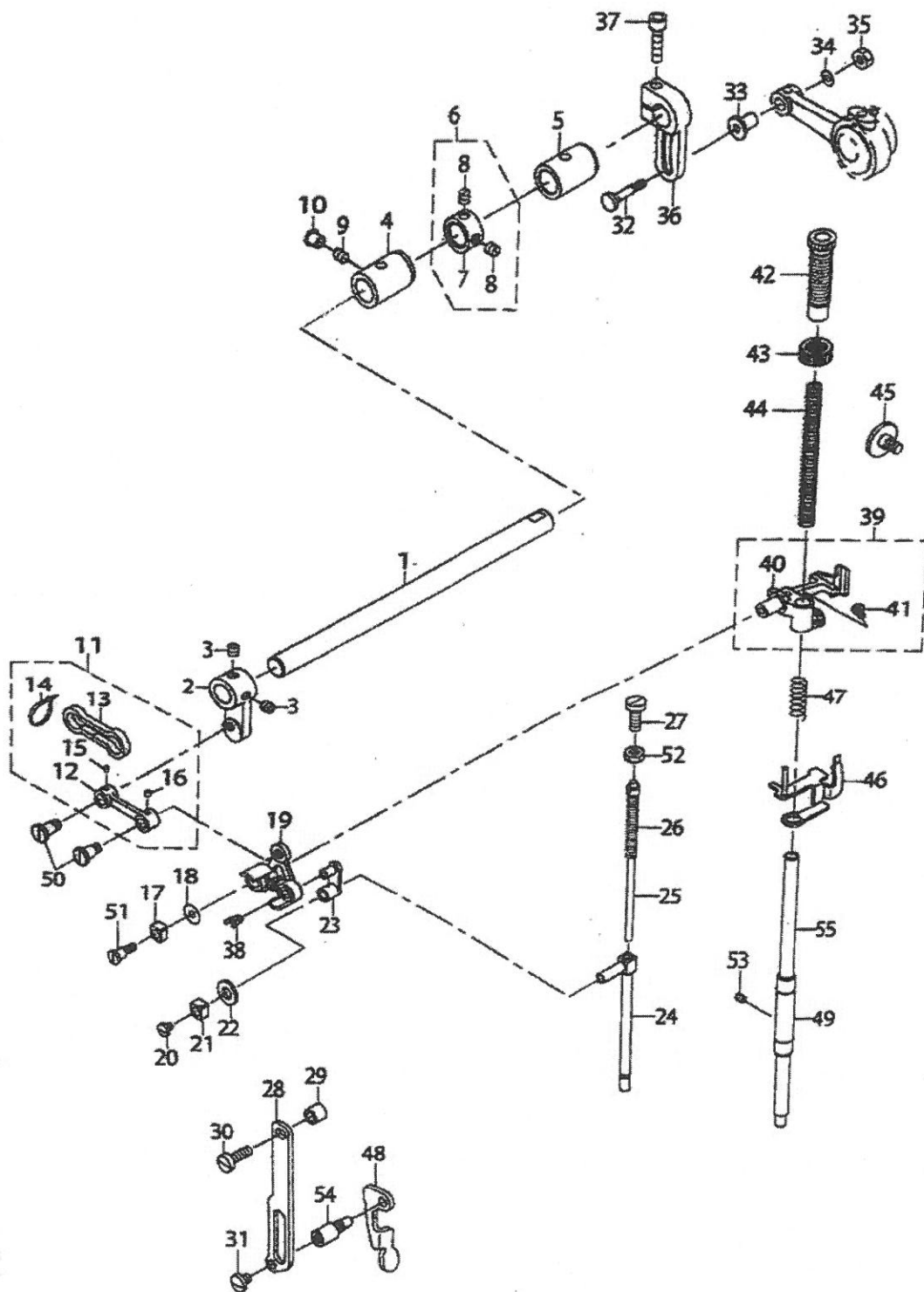
No.	Parts No.	Parts name	Remarks	Level	Cons	Qty
48	B1313055000	SAFETY CLUTCH KNOB SLEEVE				1
49	40016148	THRUST COLLAR B WASHER				1
50	SS8150710TP	SCREW 15/64-28 L=7				2
51	40038700	THRUST COLLAR ASM.				1
52	40038782	THRUST COLLAR		*		1
53	SS8661030SP	SCREW 1/4-40 L=10		*		2
54	SB120000200	BEARING 20X42		*		1
55	SS7120760SP	SCREW 3/16-28 L=7.0				2
56	21333406	BALANCER	FOR PLC-1710, PLC-1760			1
57	SS8151550SP	SCREW 15/64-28 L=15	FOR PLC-1710, PLC-1760			2
58	40038830	BALANCER	FOR PLC-1760L			1
59	SM8061212TP	SCREW M6X12	FOR PLC-1760L			2
60	21333703	SAFETY CLUTCH DISC				1
61	SS8150710TP	SCREW 15/64-28 L=7				2
62	SS8660612TP	SCREW 1/4-40 L=6	FOR PLC-1760L			1
63	21334068	FLYWHEEL	FOR PLC-1710, PLC-1760			1
64	SS8150822TP	SCREW 15/64-28 L=8				2
65	23053806	FLYWHEEL	FOR PLC-1760L			1
66	21332606	COUNTER WEIGHT (B) (38MM)	FOR PLC-1760L			1
67	B19055200A0	THREAD TAKE-UP LEVER	FOR PLC-1760L			1
68	B1905520000	THREAD TAKE-UP LEVER		*		1
69	B1907057000	THRUST PIN		*		1
70	CQ202000000	OIL WICK		*		1
71	CS0950810SH	THRUST COLLAR ASM. D=9.5 W=8				1
72	40038692	UPPER SPROCKET				1
73	SS8661110SP	SCREW 1/4-40 L=11				2

4. NEEDLE STOPPAGE MECHANISM COMPONENTS
針停止裝置關係



REF.NO	NOTE	PART NO	DESCRIPTION	品名	Qty
1		B1434-528-0A0	REPOSITIONING BASE ASM.	ハリテーシヘンカンダイクミ	1
2		B1434-528-000	REPOSITIONING BASE	ハリテーシヘンカンダイ	(1)
3		B1438-526-000	PLUG SCREW	アンナイジク フタネジ	(4)
4		B1437-526-00A	SPRING L=21.7	カイジヨバネ L=21.7	(2)
5		B1437-526-000	SPRING L=19.3	アンナイジクバネ L=19.3	(2)
6		B1435-526-000	GUIDE STUD	ハリテーシ ヘンカン アンナイジク	(2)
7		B1436-526-000	DRIVING GUIDE STUD	ハリテーシ ヨード-アンナイジク	(2)
8		B1431-526-000	SLIDE PIN	ハリテーシ ヘンカン ヨード-ピン	(1)
9		B1455-526-000	SLIDE BLOCK STUD	ヘンカン ヨード-コマジク	(1)
10		SS-8990410-TP	SCREW 9/64-40 L=3.9	トメネジ 9/64-40 L=3.9	(1)
11		B1439-528-000	COVER PLATE	ヘンカンダイフタ	1
12		SS-7890620-TP	SCREW 9/64-40 L=6.1	マルヒラネジ 9/64-40 L=6.1	2
13		B1427-526-000	DRIVING BRACKET	ハリテーシ ヘンカン ヨード-ダイ	1
14		B1431-528-000	REPOSITIONING BASE SHAFT	ハリテーシヘンカンダイ ジク	1
15		B1432-526-000	WASHER	ハリテーシヘンカンダイ ザガネ	1
16		213-88400	ROCKING BASE GUIDE	ハリボウヨウドウダイアンナイ	1
17		B1401-526-0A0	NEEDLE BAR ASM.	ハリボー クミ	2
18		B1401-526-000	NEEDLE BAR	ハリボー	(2)
19		B1404-526-000	PLUG SCREW	ハリボー フタネジ	(2)
20		B1405-526-000	PRESS BAR	ハリテーシ オシボー	(2)
21		B1406-526-000	SPRING	ハリテーシ オシボー スリーブ バネ	(2)
22		B1407-526-000	PRESS BAR SLEEVE	ハリテーシ オシボー スリーブ	(2)
23		B1409-526-000	BALL SLIDE STUD	ハリテーシ ボール スライドジク	(2)
24		B1412-526-0A0	ADJUSTING SLIDE STUD ASM.	ハリテーシ チョーセツスライドジク クミ	(2)
25		B1415-526-000	SPRING	ハリテーシ アツシクバネ	(2)
26		B1416-526-000	COLLAR	バネウケ	(2)
27		B1425-526-000	SCREW 1/8-44 L=6	ハリドメトメネジ	(2)
28		B1410-526-000	BALL	ハリテーシ ボール	12
29		B1420-526-0A0	NEEDLE BAR BRACKET ASM.	ハリボーダキ クミ	1
30		B1420-526-000	NEEDLE BAR BRACKET	ハリボーダキ	(1)
31		B1412-051-000	FELT	ハリボーダキ フェルト	(1)
32		B1422-526-000	NEEDLE BAR SUPPORT PLATE	ハリボー ウケイタ	(1)
33		SS-2060410-SP	SCREW 3/32-56 L=4.1	マルサラネジ 3/32-56 L=4.1	(2)
34		CQ-2520000-00	OIL WICK	ユシン	0.08
35		SS-8111010-TP	SCREW 11/64-40 L=9.5	トメネジ 11/64-40 L=9.5	1
36		RE-0700000-K0	E-RING 7	Eカクドメフ	1
37		B1451-526-000	OIL FELT	ハリボー キューユフェルト	1
38		213-76405	NEEDLE BAR FIXED STUD	ハリボウコティジク	2
39		B1417-526-000	HALF RING	ハリボーコチー ハーフリング	4
40		B1418-526-000	SCREW	ハリボーコティジク トメネジ	2
41		B1423-526-000	NEEDLE BAR GUIDE PLATE	ハリボー アンナイイタ	1
42		B1450-526-000	OIL FELT PRESSER	ハリボー キューユフェルト オサエ	1
43		WP-0480856-SP	WASHER 4.8X8.4X0.8	ヒラザガネ 4.8X8.4X0.8	1
44		SD-0450401-SP	HINGE SCREW D=4.5 H=4	ダンネジ D=4.5 H=4	1
45		SS-6090540-SP	SCREW 9/64-40 L=5.0	ヒラネジ 9/64-40 L=5	2
46		SS-7110830-SP	SCREW 11/64-40 L=7.5	マルヒラネジ 11/64-40 L=7.5	2
47		PS-0400222-K0	SPRING PIN	スプリングピン	1
48		213-75852	NEEDLE ROD ROCKING BASE COMPL.	ツリアスイ	1
49		213-76803	NEEDLE BAR ROCKING BASE	ハリボウヨウドウダイ	(1)
50		B1510-526-000-A	NEEDLE BAR LOWER BUSHING	ハリボーシタメタル	(1)
51		B1453-526-00A	THRUST PLATE A	シタメタル スラストイタ A	(1)
52		SS-8080310-SP	SCREW 1/8-44 L=2.8	トメネジ 1/8-44 L=2.8	(2)
53		B1452-526-000	NEEDLE BAR FRAME BUSHING	ハリボー ヨード-ダイ メタル	(1)
54		213-88603	ROCKING BASE GUIDE (B)	ハリボウヨウドウダイアンナイ (B)	1
55		M1351-781-600	NEEDLE 135X17 #160	針 135X17 #160	1
56		213-76207	UPPER FEED BAR GUIDE	ウウオクリボウガイド	1
57		SS-7110910-SP	SCREW 11/64-40 L=8.5	マルヒラネジ 11/64-40 L=8.5	2
58		SS-6091022-TP	SCREW	ヒラネジ	1
59		SS-7112420-SP	SCREW 11/64-40 L=24	マルヒラネジ 11/64-40 L=24	2
60		213-76009	NEEDLE ROD ROCKING SHAFT BASE	ハリボウヨウドウジクダイ	1
61		SS-8110750-SP	SCREW 11/64-40 L=6.5	トメネジ 11/64-40 L=6.5	1
62		213-76504	NEEDLE ROD ROCKING BASE SHAFT	ハリボウヨウドウダイジク	1
63		SS-8150510-TP	SCREW 15/64-28 L=4.7	トメネジ 15/64-28 L=4.7	1
64	#01	B1453-526-00B	THRUST PLATE T=0.6	シタメタル スラストイタ T=0.6	1
65	#01	B1453-526-00C	THRUST PLATE C	シタメタル スラストイタ C	1
		NOTE(注記)	#01...SELECTIVE PARTS	選択部品	

PRESSURE ADJUSTING & UPPER FEED MECHANISM COMPONENTS (FOR PLC-1710, PLC-1760)



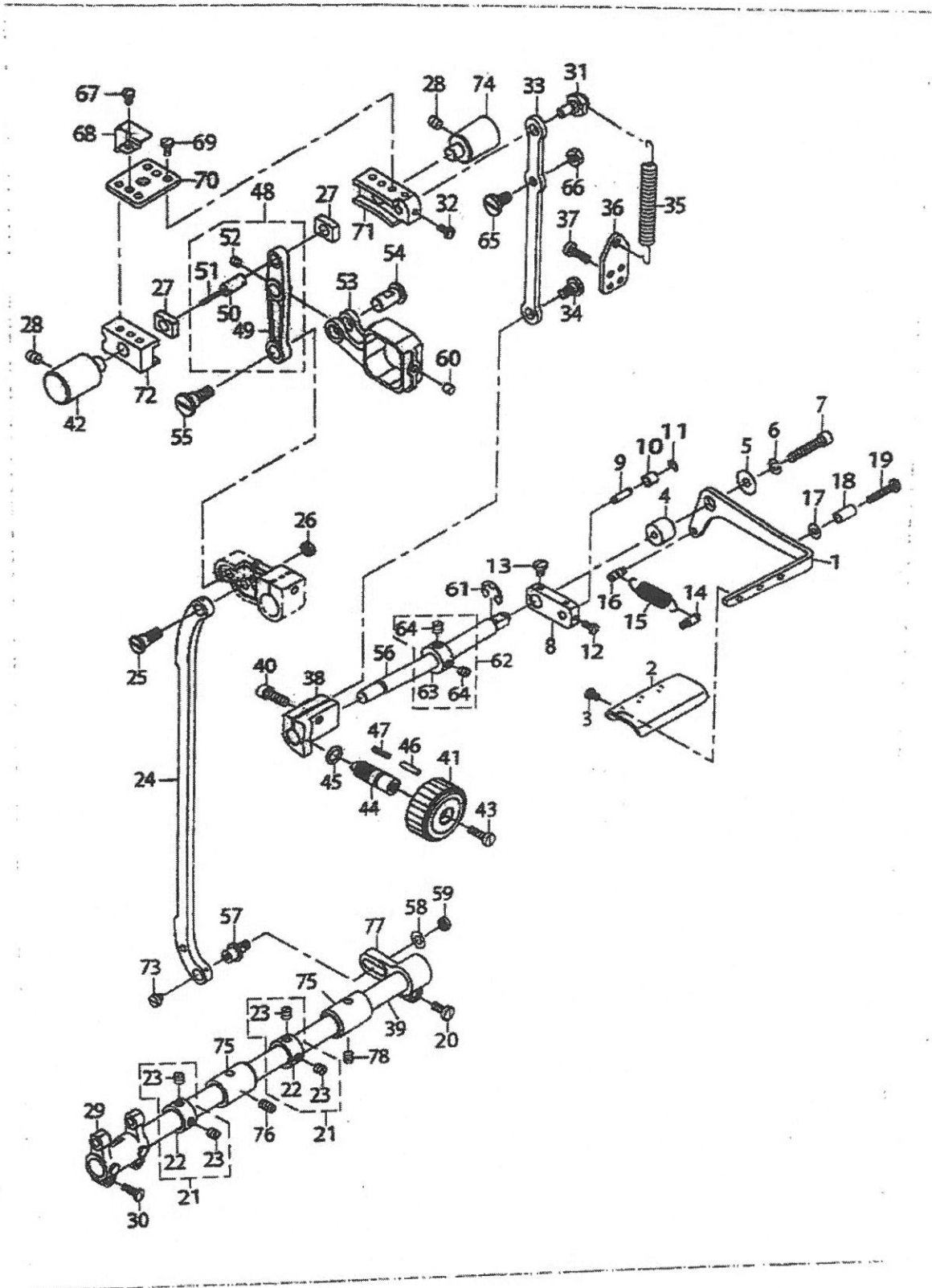
PRESSURE ADJUSTING & UPPER FEED MECHANISM COMPONENTS (FOR PLC-1710,PLC-1760)

No.	Parts No.	Parts name	Remarks	Level	Cons	Qty
1	21340401	UPPER FEED SHAFT				1
2	21340500	UPPER FEED FRONT ARM				1
3	SS8660612TP	SCREW 1/4-40 L=6				2
4	40039326	FRONT METAL				1
5	21378302	FEED SHAFT METAL				1
6	22904155	MAIN SHAFT THRUST COLLAR ASM.				1
7	22904106	MAIN SHAFT THRUST COLLAR		*		1
8	SS8660610TP	SCREW 1/4-40 L=6		*		2
9	SS8150710TP	SCREW 15/64-28 L=7				1
10	TA0750704R0	RUBBER PLUG				1
11	40033027	UPPER FEED LINK ASM.				1
12	40033026	UPPER FEED LINK		*		1
13	21347109	FELT		*		1
14	EA950080000	CLIP CV-70S		*		2
15	CQ3000000F0	OIL FELT		*		0.003
16	CQ3000000F0	OIL FELT		*		0.003
17	B1414555000	SLIDE BLOCK				1
18	WP0501046SC	WASHER 5X14X1				1
19	40033029	TRIANGULAR LEVER ASM.				1
20	SS7110510SP	SCREW 11/64-40 L=5				1
21	B1414555000	SLIDE BLOCK				1
22	10509701	FELT				1
23	40018341	WALKING BAR DRIVING LINK				1
24	40033033	WALKING BAR B				1
25	B14670530A0	WALKING BAR ASM.				1
26	B1468053000	WALKING BAR SPRING				1
27	SS6151780SP	SCREW 15/64-28 L=17.0				1
28	21496509	UPPER FEED GUIDE PLATE				1
29	26225201	ROLLER				1
30	SS6151920SP	SCREW 15/64-28 L=19.0				1
31	SS7150740SP	SCREW 15/64-28 L=7				1
32	D1456055B00	HINGE SCREW				1
33	D1455055B00	CONNECTING STUD				1
34	WP0482086SD	WASHER 4.8X11.5X2				1
35	NS6110530SP	NUT 11/64-40				1
36	21437900	UPPER FEED REAR ARM				1
37	SM6062502TP	SCREW M6 L=25				1
38	CQ252000000	OIL WICK				0.02
39	40039265	PRESSURE BAR HOLDER ASM.				1
40	40039266	PRESSURE BAR HOLDER C		*		1
41	SS7110910TP	SCREW 11/64-40 L=8.5		*		1
42	21340906	PRESSER ADJUSTING SCREW				1
43	22907804	PRESSER SPRING REGULATOR NUT				1
44	B1502248000	PRESSER SPRING				1
45	40038705	PRESSURE BAR HOLDER GUIDE				1
46	40017276	THREAD RELEASE PLATE COMPL.				1
47	B1462053000	THREAD RELEASE SPRING				1

PRESSURE ADJUSTING & UPPER FEED MECHANISM COMPONENTS (FOR PLC-1710,PLC-1760)

No.	Parts No.	Parts name	Remarks	Level	Cons	Qty
48	21406103	PRESSER LIFTER LEVER				1
49	22907109	PRESSER BAR BUSHING LOWER				1
50	40018340	SCREW				2
51	40018339	SCREW				1
52	NS8150430SP	NUT 15/64-28				1
53	SS8110520TP	SCREW 11/64-40 L=4.5				1
54	21406608	GUIDE PLATE SPACER				1
55	21451505	PRESSER BAR				1

FEED MECHANISM COMPONENTS (FOR PLC-1780L)



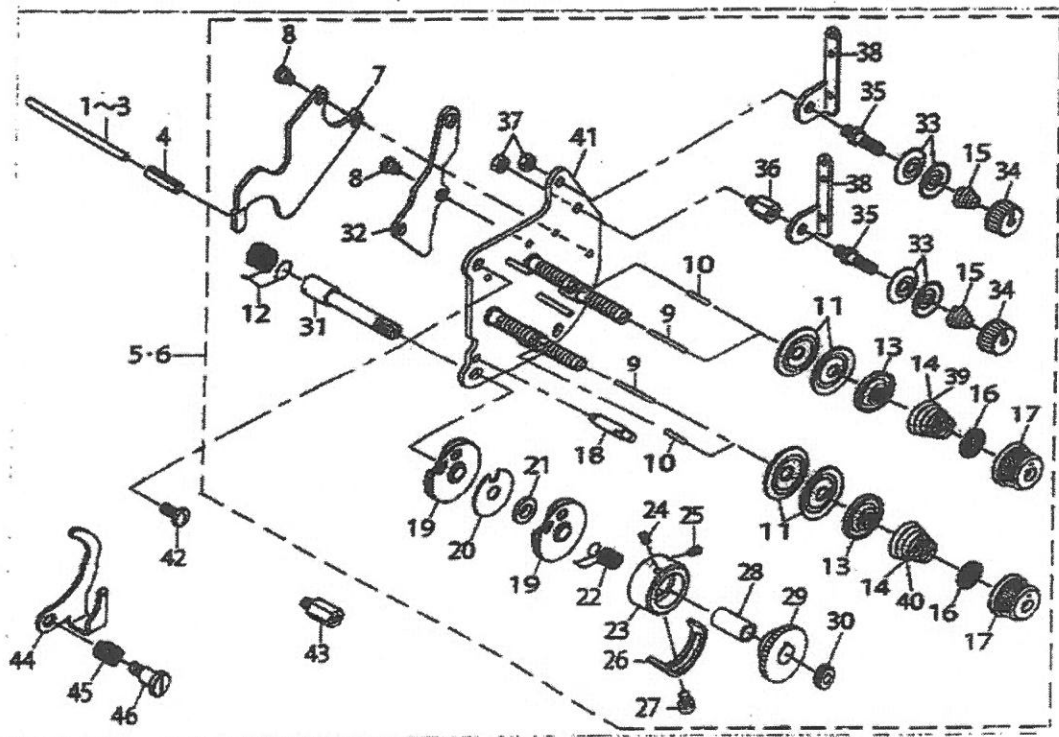
FEED MECHANISM COMPONENTS (FOR FLO-1760L)

No.	Parts No.	Parts name	Remarks	Level	Cons	Qty
1	21337001	BACKWARD FEED LEVER B				1
2	21337100	BACKWARD FEED PRESSER PLATE				1
3	SS7110710SP	SCREW 11/64-40 L=7				3
4	21352901	BACKWARD FEED LINK FULCRUM				1
5	WP0612056SD	WASHER 8.1X18.5X2				1
6	WS0610002KP	SPRING WASHER				1
7	SS8153012TP	SCREW 15/64-28				1
8	40039454	CHANGE BASE				1
9	D2481481C90	CONNECTING PIN				1
10	20023200	FEED CAM ROLL				1
11	REG000000K0	E-RING 4				1
12	SS0000010SP	SCREW 9/64-40 L=9				2
13	SS7120710SP	SCREW 3/16-28 L=7				2
14	40023289	SPRING SUSPENSION				1
15	13789201	TENSION SPRING				1
16	11272614	FEED SPRING HOOK				1
17	WP0502616SD	WASHER				1
18	22952501	BACK LEVER STOPPER				1
19	SS7112420SP	SCREW 11/64-40 L=24				1
20	SS8121216SP	SCREW 3/16-28 L=12				1
21	22904155	MAIN SHAFT THRUST COLLAR ASM.				2
22	22904108	FEED LEVER SUPPORT		*		1
23	SS8600610TP	FEED LEVER BASE		*		2
24	40038907	SCREW 9/64-40 L=6.8				1
25	SD0000701TP	HINGE SCREW D=9 H=7				1
26	NS6000320SP	WASHER 6.5X11X1				1
27	21407309	FEED DRIVING SLIDE BLOCK				2
28	SS8150822TP	SCREW 15/64-28 L=8				2
29	21364104	FEED ROCKER				1
30	SS7111410TP	SCREW 11/64-40 L=14				2
31	21337802	ECCENTRIC PIN				1
32	SS7090910TP	SCREW 9/64-40 L=8.5				2
33	21337308	FEED ADJUSTING ROD				1
34	SD0800402TP	HINGE SCREW D=8 H=4				1
35	40038901	SPRING B				1
36	40019926	SPRING HOOK				1
37	SS8111610SP	SCREW 11/64-40 L=16				2
38	23056104	FEED REGULATOR (P=12)				1
39	22809408	FEED ROCK SHAFT				1
40	SM6061802TP	SCREW M6 L=18				1
41	23056203	FEED DIAL (C)				1
42	21430400	FEED ADJUSTER SUPPORT				1
43	SS6121860SP	SCREW 3/16-28 L=18				1
44	22911804	FEED REGULATOR SCREW				1
45	RO092270200	RUBBER RING				1
46	22912000	FEED REGULATOR PIN				1
47	22912109	FEED REGULATOR PIN SPRING				1

FEED MECHANISM COMPONENTS (FOR PLC-1760L)

No.	Parts No.	Parts name	Remarks	Level	Cons	Qty
48	21336856	FEED LINK ASM.				1
49	21336907	FEED LINK		*		1
50	40009103	CONNECTING FORKED LINK PIN		*		1
51	GQ202000000	OIL WICK		*		0.04
52	SM8050612TP	SCREW M5X6		*		1
53	40011400	FEED ROD (C)				1
54	21338207	FEED LINK PIN				1
55	SD1000801SH	HINGE SCREW D=10 H=8				1
56	21338409	BACKWARD FEED LEVER SHAFT B				1
57	40108541	FEED ROCK SHAFT HINGE SCREW				1
58	WFO650876SD	WASHER 6.5X13X0.8				1
59	NS6150310SP	NUT 15/64-28				1
60	21387402	FELT				1
61	RE0900800K0	E-RING 9				1
62	CS1201010SH	THRUST COLLAR ASML D=12 W=10				1
63	CS1201011SH	THRUST COLLAR D=12 W=10		*		1
64	SS8660610TP	SCREW 1/4-40 L=6		*		2
65	SD8800402TP	HINGE SCREW D= 8 H= 4				1
66	NS6150430SP	NUT 15/64-28				1
67	SS7110710SP	SCREW 11/64-40 L=7				1
68	40038712	FELT HOLDER				1
69	SS7110910TP	SCREW 11/64-40 L=8.5				4
70	21407408	FITTING PLATE				1
71	21407200	FEED ADJUSTING BASE				1
72	40038711	FEED ADJUSTING BASE B				1
73	SS6110520TP	SCREW 11/64-40 L=4.5				1
74	21337803	FEED ADJUSTING BASE SUPPORT				1
75	21378302	FEED SHAFT METAL				2
76	SS8151150TP	SCREW 15/64-28 L=10.5				1
77	B3025141H08A	CONNECTING ARM				1
78	SS8150710TP	SCREW 15/64-28 L=7				1

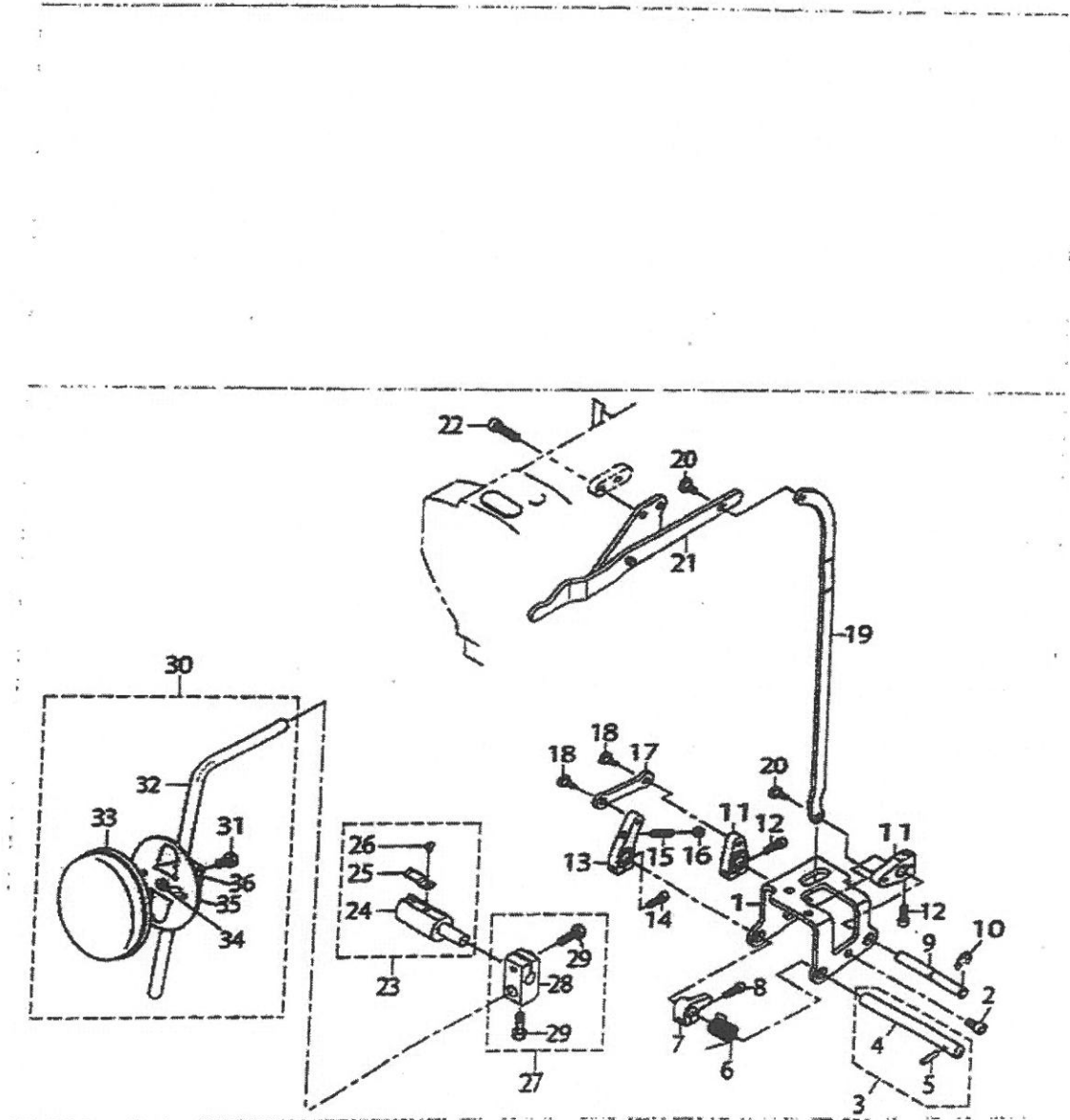
THREAD TENSION COMPONENTS (FOR PLC-1700, PLC-1700L)



THREAD TENSION COMPONENTS (FOR PLC-1760,PLC-1760L)

No.	Parts No.	Parts name	Remarks	Level	Cons	Qty
1	23006406	TENSION RELEASE BAR	SELECTIVE PARTS			1
2	21348296	TENSION RELEASE BAR	SELECTIVE PARTS			1
3	10321107	TENSION RELEASE BAR	SELECTIVE PARTS			1
4	PS0608502KP	SPRING PIN				1
5	40838263	THREAD TENSION ASML	FOR PLC-1760			1
6	40039264	THREAD TENSION ASML (60L)	FOR PLC-1760L			1
7	40017283	TENSION RELEASE LEVER A		*		1
8	SD0478281SP	HINGE SCREW D=4.7 H=2.8		*		4
9	40017282	TENSION RELEASE PIN B		*		2
10	22616201	TENSION RELEASE PIN, A		*		2
11	13138201	THREAD TENSION DISK		*		8
12	B3128051000	THREAD TAKE-UP SPRING		*	☆	1
13	22617806	THREAD TENSION DISK PRESSER		*		4
14	B3129528000	TENSION SPRING (1.2)	FOR PLC-1760	*		4
15	11045101	THREAD TENSION SPRING		*		2
16	B3120125000	ROTATING STOPPER		*		4
17	11956802	THREAD TENSION KNOB BLUE		*		4
18	B3143527000	TAKE-UP SPRING GUIDE STUD		*		1
19	B31375270A0	TAKE-UP SPRING GUIDE ASML		*		2
20	B3142527000	TAKE-UP SPRING GUIDE PLATE		*		1
21	B3139527000	COLLAR		*		1
22	B3128527000	THREAD TAKE-UP SPRING B		*	☆	1
23	22617809	THREAD TENSION POST		*		1
24	22618904	SET SCREW		*		1
25	22618904	SET SCREW		*		1
26	B3138527000	ADJUSTING PLATE B		*		1
27	SS7000620SP	SCREW 9/64-40 L=4.5		*		1
28	B3141527000	PRESSER COLLAR		*		1
29	B3125527000	TAKE-UP SPRING GUIDE		*		1
30	B3125012000	THREAD TENSION NUT		*		1
31	10124501	THREAD TAKE-UP SPRING STUD		*		1
32	40017284	TENSION RELEASE LEVER B		*		1
33	10741106	FIRST THREAD TENSION PLATE		*		4
34	11072402	THREAD TENSION NUT		*		2
35	10124204	THREAD TENSION POST A		*		2
36	40017279	SPACER		*		1
37	NS6110310SP	NUT 11/64-40		*		2
38	10703205	FIRST THREAD TENSION GUIDE		*		2
39	B3129053000	TENSION SPRING	FOR PLC-1760L	*		2
40	21059100	THREAD TENSION SPRING	FOR PLC-1760L	*		2
41	40017280	THREAD TENSION BASE COMPL		*		1
42	SS7110910TP	SCREW 11/64-40 L=7				2
43	40038752	THREAD TENSION STUD				1
44	40040559	TENSION RELEASE PLATE	OPTIONAL PARTS (FOR PLC-1780)			1
45	40040558	SPRING	OPTIONAL PARTS (FOR PLC-1760)			1
46	SD0640851SP	STEP-SCREW	OPTIONAL PARTS (FOR PLC-1760)			1

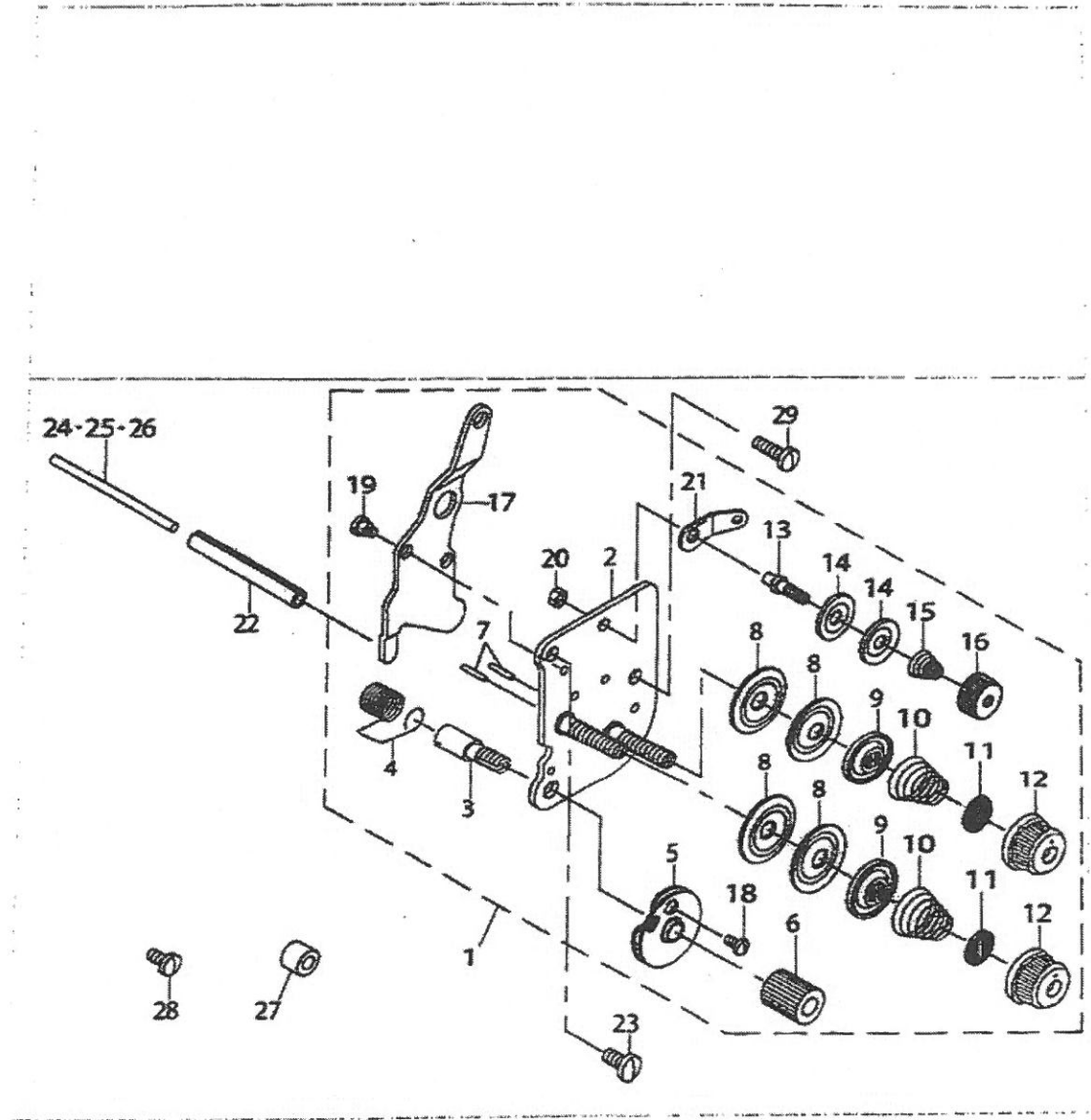
KNEE LIFTING COMPONENTS



KNEE LIFTING COMPONENTS

No.	Parts No.	Parts name	Remarks	Level	Cons	Qty
1	21343207	KNEE LIFTER SHAFT BASIS				1
2	SM6061202TP	SCREW M6 L=12				3
3	21342555	KNEE LIFTER SHAFT A ASM.				1
4	21342506	KNEE LIFTER SHAFT A		*		1
5	21342905	KNEE LIFTER SHAFT PIN		*		1
6	21343782	KNEE LIFTER SHAFT A SPRING				1
7	21343801	KNEE LIFTER SPRING RACK				1
8	SM6051682TP	SCREW MSX0.8 L=16				1
9	21342784	KNEE LIFTER SHAFT B				1
10	REB800000K0	E-SHAPED SNAP RING (6MM)				1
11	21343809	KNEE LIFTER LEVER B				2
12	SM6051682TP	SCREW MSX0.8 L=16				2
13	21342803	KNEE LIFTER LEVER A				1
14	SM6051682TP	SCREW MSX0.8 L=16				1
15	SM6052502TP	SCREW MSX0.8 L=25				1
16	NM6050801SD	NUT MSX0.8				1
17	21342902	KNEE LIFTER LINK				1
18	SD0700451TP	HINGE SCREW D=7 H=4.5				2
19	48017274	KNEE LIFTER CONNECTING ROD				1
20	SD0700451TP	HINGE SCREW D=7 H=4.5				2
21	21343355	KNEE LIFTER LEVER ASM.				1
22	SM6062502TP	SCREW M6 L=25				2
23	22863252	KNEE LIFTER JOINT ASM.				1
24	22863203	KNEE LIFTER JOINT		*		1
25	B3428521000	PRESSER SPRING		*		1
26	SS7098510SP	SCREW 9/64-40 L=4.8		*		1
27	22932453	BRACKET ASM.				1
28	22932484	BRACKET		*		1
29	22934797	SCREW		*		2
30	21343157	KNEE PRESS PLATE ASM.				1
31	SM6061203SE	SCREW M6 L=12		*		1
32	21343108	KNEE PRESS LEVER		*		1
33	22934509	KNEE PAD PLATE COVER		*		1
34	22934400	KNEE PAD PLATE RUBBER		*		1
35	22934202	KNEE PAD PLATE		*		1
36	22934301	KNEE PAD PLATE SUPPORT		*		1

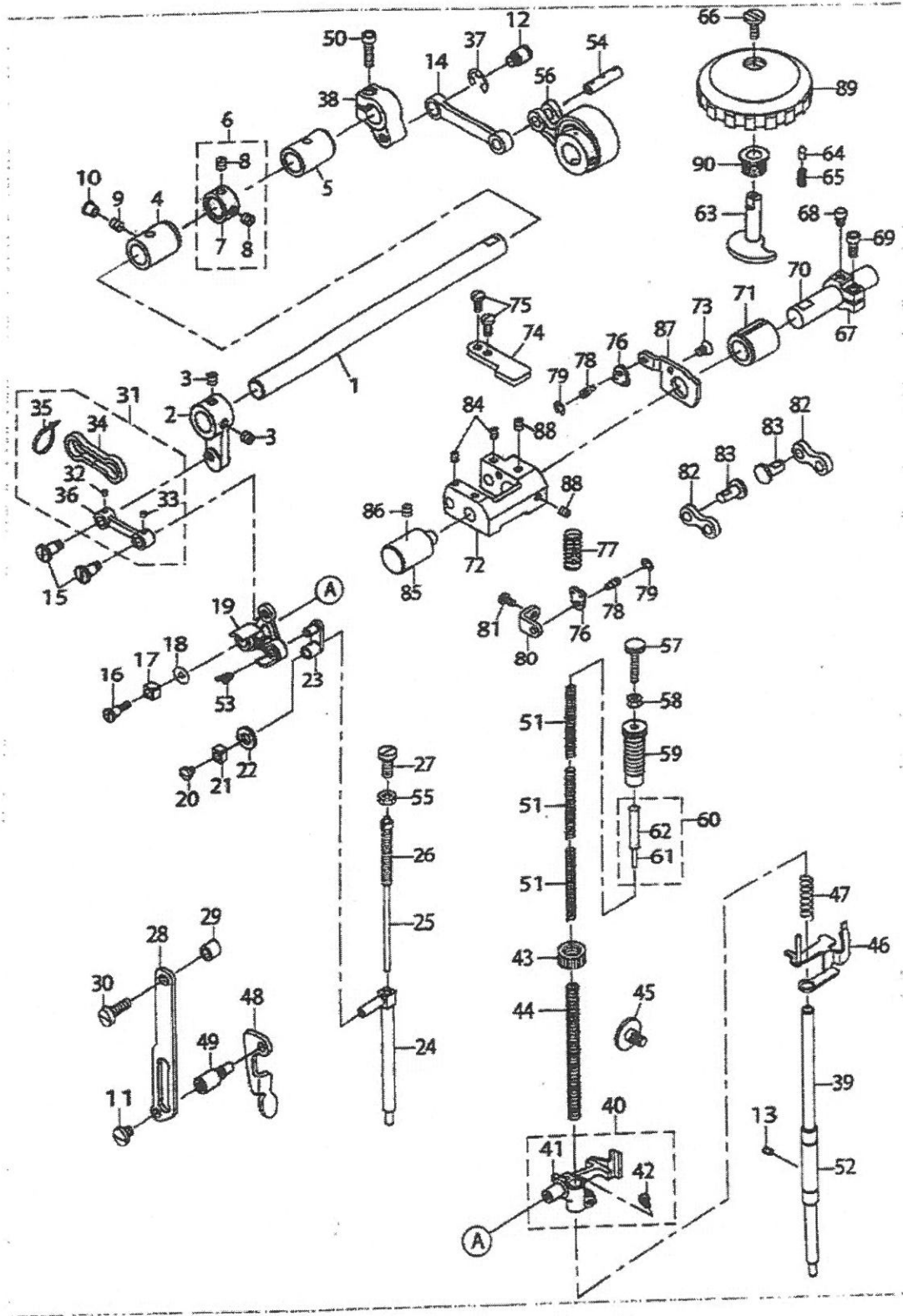
THREAD TENSION COMPONENTS (FOR PLC-1710)



THREAD TENSION COMPONENTS (FOR PLC-1710)

No.	Parts No.	Parts name	Remarks	Level	Cons	Qty
1	40030837	THREAD TENSION ASM.				1
2	21441050	TENSION POST COMPL.		*		1
3	10320109	SCREW STUD		*		1
4	B3128051800	THREAD TAKE-UP SPRING A		*	☆	1
5	B31370510A0	TAKE-UP SPRING GUIDE DISC ASM.		*		1
6	10320208	THREAD TENSION STUD NUT		*		1
7	22618201	TENSION RELEASE PIN A		*		2
8	13138201	THREAD TENSION DISK		*		4
9	22017908	THREAD TENSION DISK PRESSER		*		2
10	B3129520000	TENSION SPRING (1.2)		*		2
11	B3120125000	ROTATING STOPPER		*		2
12	11356802	THREAD TENSION KNOB BLUE		*		2
13	10124204	THREAD TENSION POST A		*		1
14	10741108	FIRST THREAD TENSION PLATE		*		2
15	11045101	THREAD TENSION SPRING		*		1
16	11072402	THREAD TENSION NUT		*		1
17	21441100	TENSION RELEASE PLATE		*		1
18	SS4000010SP	SCREW 1/8-44 L=6.4		*		1
19	SD0470281SP	HINGE SCREW D=4.7 H=2.8		*		2
20	NS6110310SP	NUT 11/64-40		*		1
21	D3162555B00	THREAD GUIDE		*		1
22	PS0606502KP	SPRING PIN				1
23	SS7110910TP	SCREW 11/64-40 L=8.5				1
24	21348206	TENSION RELEASE BAR	SELECTIVE PARTS			1
25	10321107	TENSION RELEASE BAR	SELECTIVE PARTS			1
26	23000406	TENSION RELEASE BAR	SELECTIVE PARTS			1
27	11315108	COLLAR				1
28	SS7110830SP	SCREW 11/64-40 L=7.5				1
29	SS7111410TP	SCREW 11/64-40 L=14				1

PRESSURE ADJUSTING & UPPER FEED MECHANISM COMPONENTS (FOR PLC-1760L)



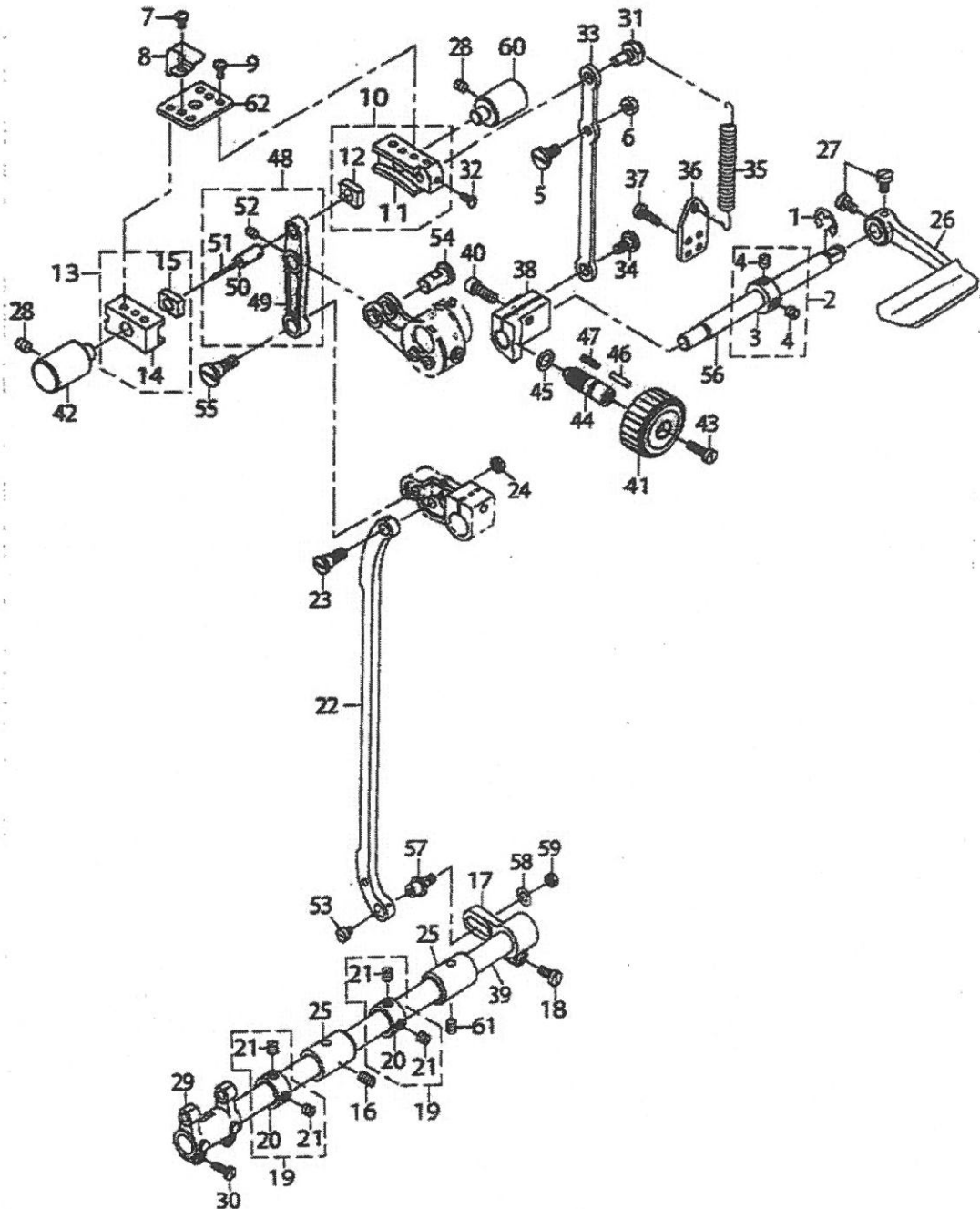
PRESSURE ADJUSTING & UPPER FEED MECHANISM COMPONENTS (FOR PLC-1760L)

No.	Parts No.	Parts name	Remarks	Level	Cons	Qty
1	21340401	UPPER FEED SHAFT				1
2	21340500	UPPER FEED FRONT ARM				1
3	SS8660612TP	SCREW 1/4-40 L=6				2
4	40039326	FRONT METAL				1
5	21378302	FEED SHAFT METAL				1
6	22904155	MAIN SHAFT THRUST COLLAR ASM.				1
7	22904106	MAIN SHAFT THRUST COLLAR		*		1
8	SS8660810TP	SCREW 1/4-40 L=6		*		2
9	SS8158710TP	SCREW 15/64-28 L=7				1
10	TA0750704R0	RUBBER PLUG				1
11	SS7150740SP	SCREW 15/64-28 L=7				1
12	21048707	HINGE SCREW				1
13	SS8110520TP	SCREW 11/64-40 L=4.5				1
14	21340005	UPPER FEED LINK (B)				1
15	40018340	SCREW				2
16	40018339	SCREW				1
17	B1414555000	SLIDE BLOCK				1
18	WP0501046SC	WASHER 5X14X1				1
19	40033029	TRIANGULAR LEVER ASM.				1
20	SS7110510SP	SCREW 11/64-40 L=5				1
21	B1414555000	SLIDE BLOCK				1
22	10509701	FELT				1
23	40018341	WALKING BAR DRIVING LINK				1
24	40033033	WALKING BAR B				1
25	B14670530A0	WALKING BAR ASM.				1
26	B1468853000	WALKING BAR SPRING				1
27	SS8151780SP	SCREW 15/64-28 L=17.0				1
28	21406509	UPPER FEED GUIDE PLATE				1
29	26225201	ROLLER				1
30	SS6151920SP	SCREW 15/64-28 L=19.0				1
31	40033027	UPPER FEED LINK ASM.				1
32	CQ3000000F0	OIL FELT		*	0.003	
33	CQ3000000F0	OIL FELT		*	0.003	
34	21347109	FELT		*		1
35	EA9500B0000	CLIP CV-70S		*		2
36	40033026	UPPER FEED LINK		*		1
37	RE0800000K0	E-SHAPED SNAP RING (8MM)				1
38	21340302	UPPER FEED REAR ARM (B)				1
39	21451505	PRESSER BAR				1
40	40039265	PRESSURE BAR HOLDER ASM.				1
41	40039266	PRESSURE BAR HOLDER C		*		1
42	SS7110910TP	SCREW 11/64-40 L=8.5		*		1
43	22907604	PRESSER SPRING REGULATOR NUT				1
44	B1502246000	PRESSER SPRING				1
45	40038705	PRESSURE BAR HOLDER GUIDE				1
46	40017276	THREAD RELEASE PLATE COMPL.				1
47	B1462053000	THREAD RELEASE SPRING				1

PRESSURE ADJUSTING & UPPER FEED MECHANISM COMPONENTS (FOR PLC-1760L)

No.	Parts No.	Parts name	Remarks	Level	Cons	Gty
48	21406103	PRESSER LIFTER LEVER				1
49	21406608	GUIDE PLATE SPACER				1
50	SM6052002TP	SCREW M5 L=20				1
51	21006002	ADJUST SPRING B				3
52	22907109	PRESSER BAR BUSHING LOWER				1
53	CQ252000000	OIL WICK				0.02
54	10713808	CONNECTION LINK PIN B				1
55	NS8150430SP	NUT 15/64-28				1
56	40075553	ECCENTRIC ROD (SET)				1
57	21006507	ADJUST SCREW B				1
58	NS8110530SP	NUT 11/64-40				1
59	21006408	ADJUST SCREW A				1
60	40072709	SPRING SUPPORT SHAFT ASM.				1
61	PS0300242K0	SPRING PIN 3.0X24		*		1
62	40072708	SPRING SUPPORT SHAFT		*		1
63	40108542	VERTICAL ADJUSTING CAM				1
64	10715704	VERTICAL DIAL PIN				1
65	B152852700G	SPRING				1
66	SS8110830TP	SCREW 11/64-40 L=6				1
67	21341807	VERTICAL ADJUSTING ARM				1
68	10715308	PIN				1
69	SM6051202TP	SCREW M5X0.8 L=12				1
70	21341508	VERTICAL CHANGE BASE SHAFT				1
71	10718203	FEED SHAFT FRONT METAL				1
72	10714202	VERTICAL CHANGE BELT				1
73	SM1050801SR	SCREW M5 L=8				1
74	21339700	UPPER FEED STOPPER PLATE (B)				1
75	SS7111120TP	SCREW				2
76	10713501	SPRING HOOK				2
77	10716504	VERTICAL SHAFT SPRING				1
78	B3416552000	CONNECTING ROD HINGE SCREW				2
79	RE0500000K0	E-RING				2
80	21339809	UPPER FEED DOG SPRING HOOK				1
81	SS7110830SP	SCREW 11/64-40 L=7.5				1
82	40107949	CONNECTION LINK B				2
83	10714508	CONNECTION LINK B SUPPORT PIN				2
84	SM8050602TP	SCREW M5 L=6				2
85	21337803	FEED ADJUSTING BASE SUPPORT				1
86	SS8150710SP	SCREW 15/64-28 L=7				1
87	21339601	UPPER FEED STOPPER PLATE (A)				1
88	SM8050602TP	SCREW M5 L=6				2
89	10774305	VERTICAL DIAL				1
90	10715100	VERTICAL DIAL SHAFT BUSHING				1

FEED MECHANISM COMPONENTS (FOR PLC-1710,PLC-1760)



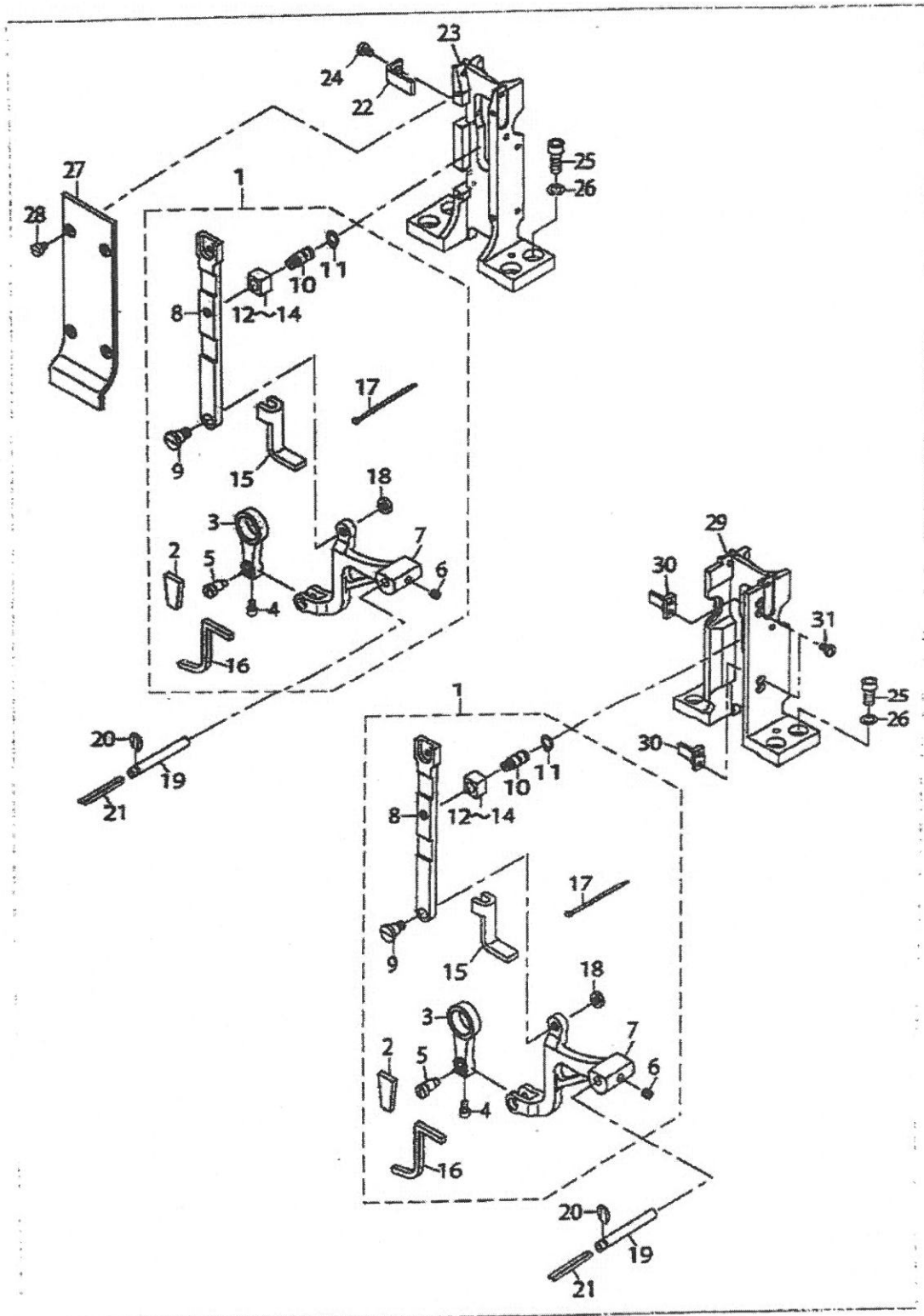
FEED MECHANISM COMPONENTS (FOR PLC-1710,PLC-1760)

No.	Parts No.	Parts name	Remarks	Level	Cons	Qty
1	RE0900000K0	E-RING 9				1
2	CS1201010SH	THRUST COLLAR ASM. D=12 W=10				1
3	CS1201011SH	THRUST COLLAR D=12 W=10		*		1
4	SS8660610TP	SCREW 1/4-40 L=6		*		2
5	SD0800402TP	HINGE SCREW D=8 H=4				1
6	NS6150430SP	NUT 15/64-28				1
7	SS7110710SP	SCREW 11/64-40 L=7				1
8	40038712	FELT HOLDER				1
9	SS7110910TP	SCREW 11/64-40 L=8.5				4
10	40081970	FEED ADJUSTING BASE				1
11	21407200	FEED ADJUSTING BASE		*		1
12	21407309	SQUARE BLOCK		*		1
13	40081969	FEED ADJUSTING BASE B SET				1
14	40038711	FEED ADJUSTING BASE B		*		1
15	21407309	SQUARE BLOCK		*		1
16	SS8151150TP	SCREW 15/64-28 L=10.5				1
17	B3025141H00A	CONNECTING ARM				1
18	SS6121210SP	SCREW 3/16-28 L=12				1
19	22904155	MAIN SHAFT THRUST COLLAR ASM.				2
20	22904106	MAIN SHAFT THRUST COLLAR		*		1
21	SS8660610TP	SCREW 1/4-40 L=6		*		2
22	49039307	FEED REGULATOR CONNECTING ROD				1
23	SD0900701TP	HINGE SCREW D=9 H=7				1
24	NS6680320SP	NUT 9/32-28				1
25	21378302	FEED SHAFT METAL				2
26	21388004	REVERSE FEED ROCK SHAF				1
27	SS6120930TP	SCREW 3/16-28 L=9				2
28	SS8150822TP	SCREW 15/64-28 L=8				2
29	21364104	FEED ROCKER				1
30	SS7111410TP	SCREW 11/64-40 L=14				2
31	21337902	ECCENTRIC PIN				1
32	SS7080910TP	SCREW 9/64-40 L=8.5				2
33	21337308	FEED ADJUSTING ROD				1
34	SD0800402TP	HINGE SCREW D=8 H=4				1
35	21337605	SPRING				1
36	40019926	SPRING HOOK				1
37	SS6111610SP	SCREW 11/64-40 L=16				2
38	21337209	FEED ADJUSTING A				1
39	22609408	FEED ROCK SHAFT				1
40	SM6061802TP	SCREW M6 L=18				1
41	21336805	FEED DIAL A				1
42	21430400	FEED ADJUSTER SUPPORT				1
43	SS6121860SP	SCREW 3/16-28 L=18				1
44	22911804	FEED REGULATOR SCREW				1
45	RO092270200	RUBBER RING				1
46	22912000	FEED REGULATOR PIN				1
47	22912109	FEED REGULATOR PIN SPRING				1

FEED MECHANISM COMPONENTS (FOR PLC-1710,PLC-1760)

No.	Parts No.	Parts name	Remarks	Level	Cons	Qty
48	21336856	FEED LINK ASM.				1
49	21336807	FEED LINK		*		1
50	40009103	CONNECTING FORKED LINK PIN		*		1
51	CG202000000	OIL WICK		*		0.04
52	SM8050812TP	SCREW M5X6		*		1
53	SS8110520TP	SCREW 11/64-40 L=4.5				1
54	21338207	FEED LINK PIN				1
55	SD1000801SH	HINGE SCREW D=10 H=8				1
56	21336300	BACKWARD FEED LEVER SHAFT				1
57	40108541	FEED ROCK SHAFT HINGE SCREW				1
58	WP0650876SD	WASHER 6.5X13X0.8				1
59	NS6150310SP	NUT 15/64-28				1
60	21337803	FEED ADJUSTING BASE SUPPORT				1
61	SS8150710TP	SCREW 15/64-28 L=7				1
62	21407408	FITTING PLATE				1

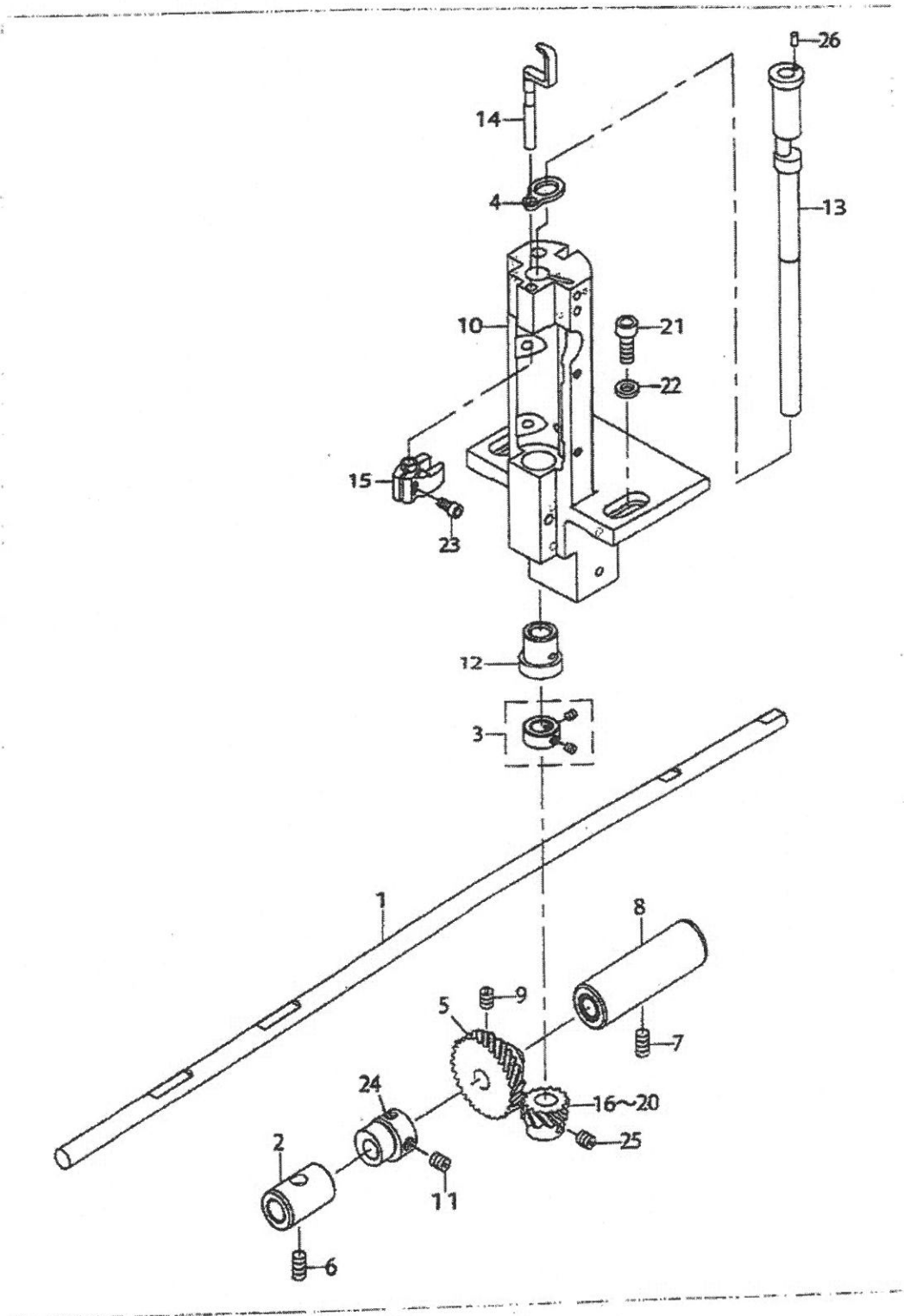
FEED BASE COMPONENTS



FEED BASE COMPONENTS

No.	Parts No.	Parts name	Remarks	Level	Cons	Qty
1	40038859	FEED BAR ASM.				1
2	40038968	FELT (D)		*		1
3	23200801	VERTICAL FEED LINK		*		1
4	SS8080612TP	SCREW 9/64-40 L=6		*		1
5	23200900	VERTICAL FEED LINK SHAFT		*		1
6	SM8050502TP	SCREW M5 L=5		*		1
7	23058005	FEED BASE		*		1
8	40038257	FEED LEVER		*		1
9	40039015	FEED LEVER SCREW		*		1
10	23009509	FEED LEVER SHAFT		*		1
11	RC0740811KP	O-RING		*		1
12	13516703	SLIDE BLOCK B	SELECTIVE PARTS	*		1
13	13516604	SLIDE BLOCK A	SELECTIVE PARTS	*		1
14	13519202	SLIDE BLOCK	SELECTIVE PARTS	*		1
15	40038709	FELT A		*		1
16	40038967	FELT (C)		*		1
17	EA9500B0100	CABLE BAND		*		6
18	NS6150310SP	NUT 15/64-28		*		1
19	B1604012000A	FEED BAR SHAFT				1
20	RE0500711KP	SNAP RING 5				1
21	CQ202000000	OIL WICK				0.14
22	23038304	FEED LEVER SUPPORT	FOR PLC-1710			2
23	40038981	FEED LEVER BASE	FOR PLC-1710			1
24	SS8080630TP	SCREW 9/64-40 L=6	FOR PLC-1710			2
25	SM8061802TP	SCREW M6 L=16				4
26	WFO612078SP	WASHER 6.1X11X2				4
27	40017263	FEED LEVER BASE COVER	FOR PLC-1710			1
28	SS8080630SP	SCREW 9/64-40 L=6	FOR PLC-1710			4
29	40038707	FEED LEVER BASE	FOR PLC-1760,PLC-1760L			1
30	40017317	FEED LEVER SUPPORT	FOR PLC-1760,PLC-1760L			2
31	SS7090710SP	SCREW 9/64-40 L=6.3	FOR PLC-1760,PLC-1760L			4

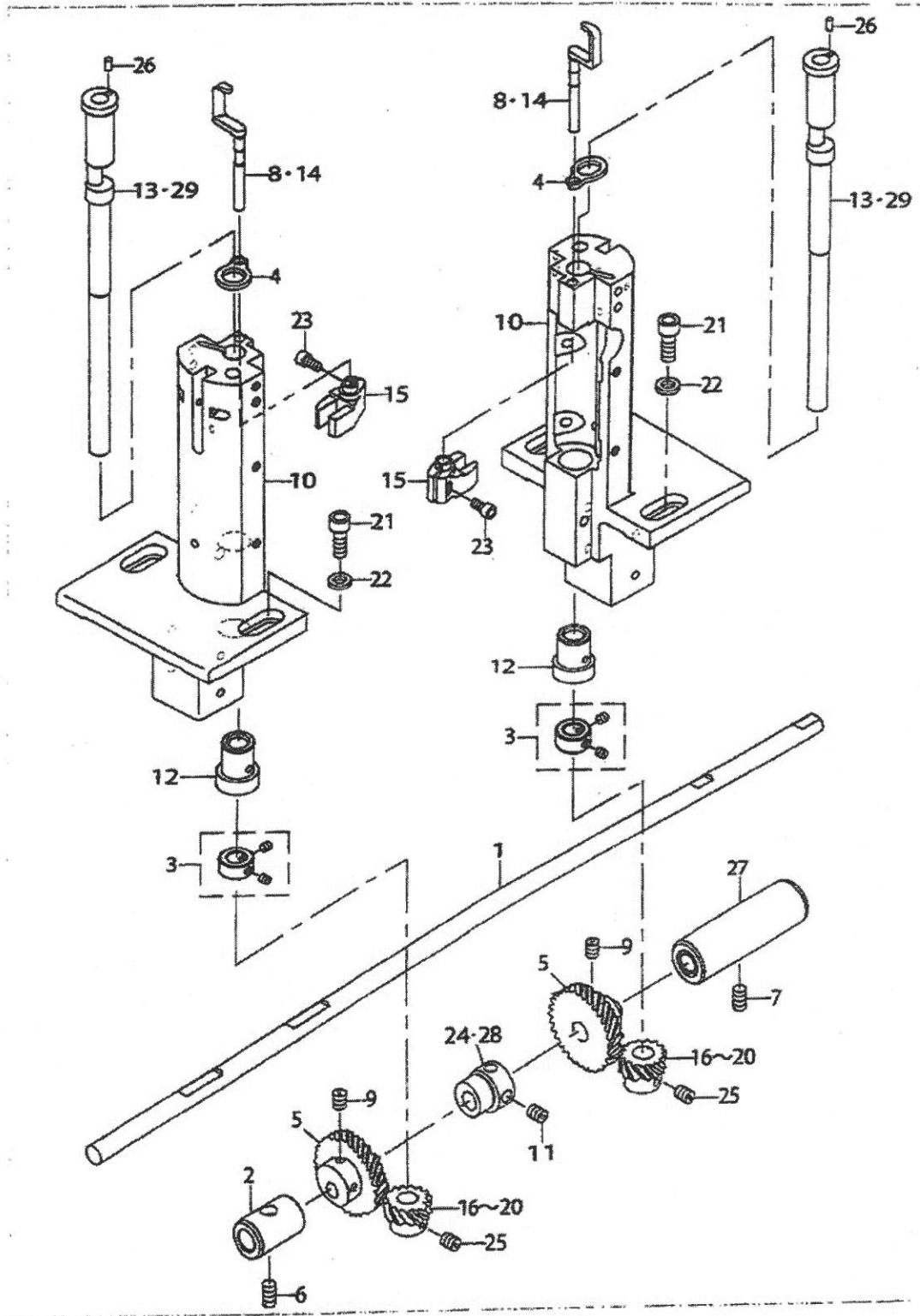
HOOK SHAFT & LOWER SHAFT COMPONENTS (FOR PLC-1710)



HOOK SHAFT & LOWER SHAFT COMPONENTS (FOR PLC-1710)

No.	Parts No.	Parts name	Remarks	Level	Cons	Qty
1	40038895	HOOK DRIVING SHAFT				1
2	21427307	LOWER SHAFT METAL REAR				1
3	CS095081ASH	THRUST COLLAR ASM. D=9.53 W=8				1
4	23004708	HOOK SHAFT SPACER				1
5	B1916512000	HOOK DRIVING SHAFT LARGE				1
6	SS8151150TP	SCREW 15/64-28 L=10.5				1
7	SS8151150TP	SCREW 15/64-28 L=10.5				1
8	40038897	BUSHING INTERMEDIATE ASM.				1
9	SS8660810TP	SCREW 1/4-40 L=8				2
10	40038887	HOOK SHAFT BASE				1
11	SS8150710TP	SCREW 15/64-28 L=7				2
12	21334701	HOOK SHAFT LOWER METAL				1
13	23004609	HOOK SHAFT				1
14	40038822	OPENER				1
15	23004908	OPENER GUIDE ARM				1
16	10112001	HOOK SHAFT GEAR A	SELECTIVE PARTS			1
17	10112100	HOOK SHAFT GEAR B	SELECTIVE PARTS			1
18	10112209	HOOK SHAFT GEAR C	SELECTIVE PARTS			1
19	10111904	HOOK SHAFT GEAR	SELECTIVE PARTS			1
20	40029634	HOOK SHAFT SCREW GEAR	SELECTIVE PARTS			1
21	SM6061602TP	SCREW M6 L=16				2
22	WP0612076SP	WASHER 6.1X11X2				2
23	SM6040802TP	SCREW M4X0.7 L=8				1
24	23024409	VERTICAL FEED CAM (1.5)				1
25	SS8660530TP	SCREW 1/4-40 L=4.5				3
26	PH0300062C0	PIN				1

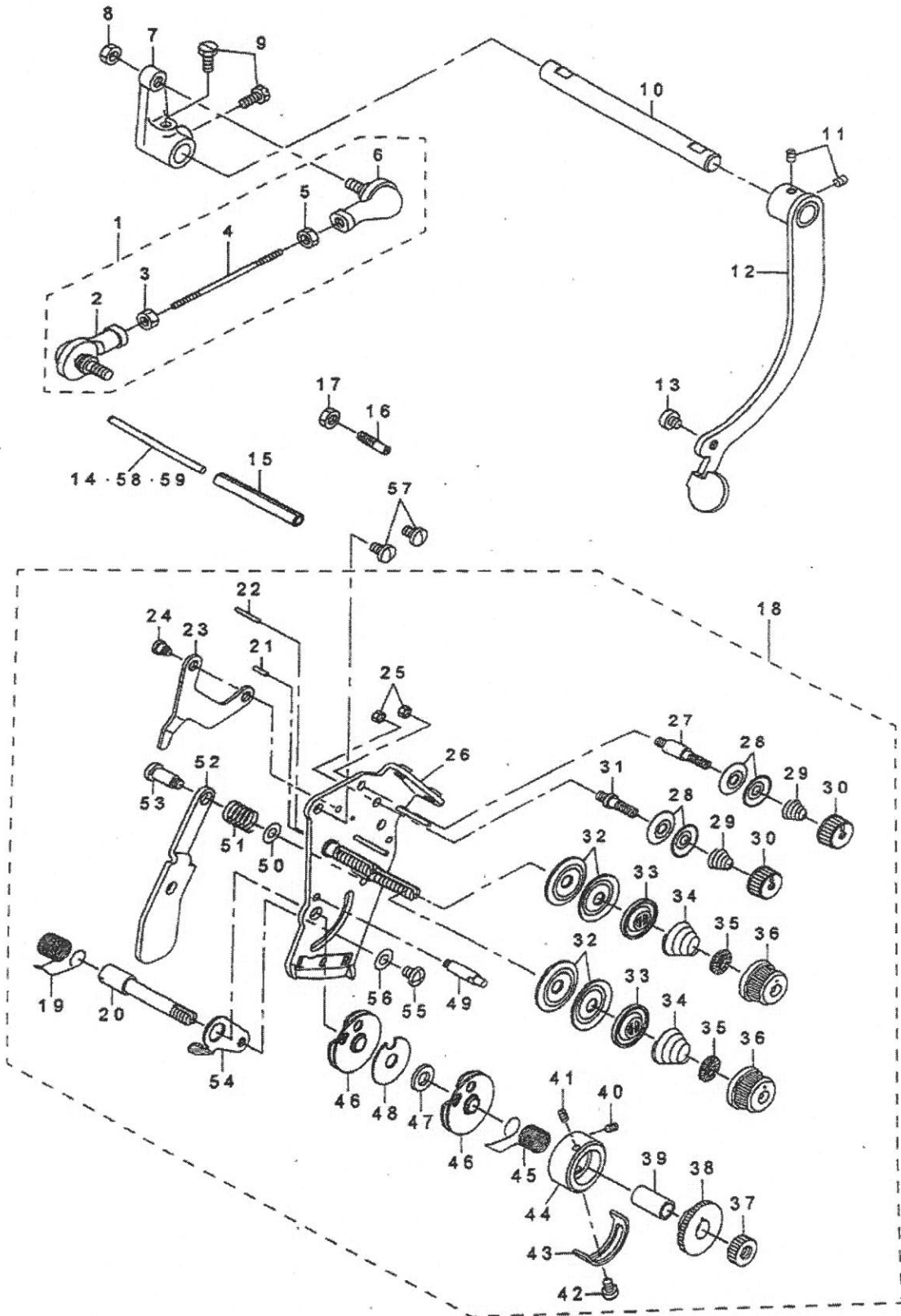
HOOK SHAFT & LOWER SHAFT COMPONENTS (FOR PLC-1760, PLC-1760L)



HOOK SHAFT & LOWER SHAFT COMPONENTS (FOR PLC-1760, PLC-1760L)

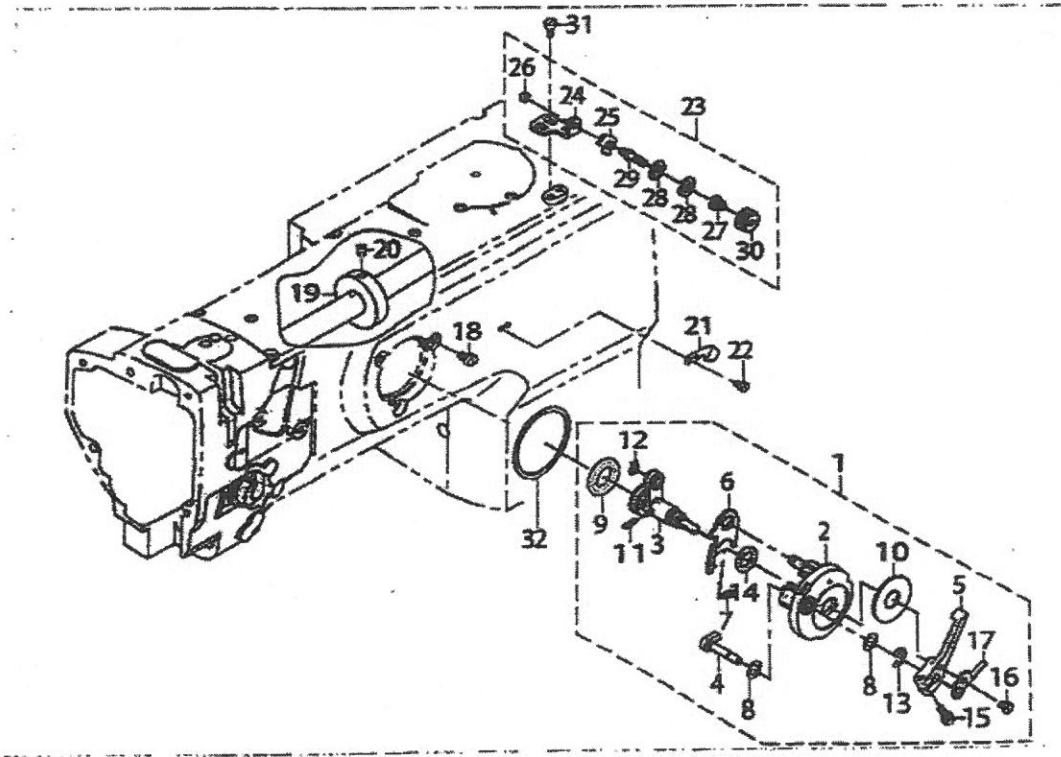
No.	Parts No.	Parts name	Remarks	Level	Cons	Qty
1	40038695	HOOK DRIVING SHAFT				1
2	21427307	LOWER SHAFT METAL REAR				1
3	CS085081ASH	THRUST COLLAR ASM. D=9.53 W=8				2
4	23004708	HOOK SHAFT SPACER				2
5	B1816512000	HOOK DRIVING SHAFT LARGE				2
6	SS8151150TP	SCREW 15/64-28 L=10.5				1
7	SS8151150TP	SCREW 15/64-28 L=10.5				1
8	40038822	OPENER	FOR PLC-1760			2
9	SS8680810TP	SCREW 1/4-40 L=8				4
10	40038867	HOOK SHAFT BASE				2
11	SS8150710TP	SCREW 15/64-28 L=7				2
12	21334701	HOOK SHAFT LOWER METAL				2
13	23004809	HOOK SHAFT	FOR PLC-1760			2
14	40038829	OPENER	FOR PLC-1760L			2
15	23004906	OPENER GUIDE ARM				2
16	10112001	HOOK SHAFT GEAR A	SELECTIVE PARTS			2
17	10112100	HOOK SHAFT GEAR B	SELECTIVE PARTS			2
18	10112209	HOOK SHAFT GEAR C	SELECTIVE PARTS			2
19	10111904	HOOK SHAFT GEAR	SELECTIVE PARTS			2
20	40029634	HOOK SHAFT SCREW GEAR	SELECTIVE PARTS			2
21	SM6061802TP	SCREW M6 L=16				4
22	WP0612076SP	WASHER 6.1X11X2				4
23	SM6040802TP	SCREW M4X0.7 L=8				2
24	23024409	VERTICAL FEED CAM (1.5)	FOR PLC-1760			1
25	SS8680530TP	SCREW 1/4-40 L=4.5				6
26	PH0300062CD	PIN				2
27	40038697	BUSHING INTERMEDIATE ASM.				1
28	40068166	VERTICAL FEED CAD(2.4)	FOR PLC-1760L			1
29	40038902	HOOK SHAFT (60L)	FOR PLC-1760L			2

3. NEEDLE STOPPAGE EXCHANGE LEVER & THREAD TENSION COMPONENTS
 針停止交換レバー・糸調子関係



REF.NO	NOTE	PART NO	DESCRIPTION	品名	Qty
1		213-77155	BALL JOINT COMPL	ヘンカンレバージク	1
2		B1440-526-000	BALL JOINT LEFT	ボール ジョイント ヒダリ	(1)
3		NM-6050550-SD	NUT M5X0.8	ロツカクナツト M5X0.8 ヒダリネジ	(1)
4		B1441-526-000	ADJUSTING SHAFT ROD	チョーセツジク ロッド	(1)
5		NM-6050001-SP	NUT M5	ロツカクナツト M5X0.8 1シユ	(1)
6		B1442-526-000	BALL JOINT RIGHT	ボール ジョイント ミキ	(1)
7		B1443-526-00A	NEEDLE STOP SHIFTING ARM	ハリテイシヘンカンウテ	1
8		NM-6050001-SP	NUT M5	ロツカクナツト M5X0.8 1シユ	1
9		SS-9111010-SP	SCREW 11/64-40 L=9.5	ロツカクボルト 11/64-40 L=9	2
10		213-77007	REPOSITIONING LEVER SHAFT	ヘンカンレバージク	1
11		SS-8110520-TP	SCREW 11/64-40 L=4.5	止めねじ 11/64-40 L=4.5	2
12		226-87453	REPOSITIONING LEVER ASM.	ヘンカンレバーケツゴウ	1
13		SS-6110430-TP	SCREW 11/64-40 L=4.0	ヒラネジ 11/64-40 L=4	1
14	#01	103-21107	TENSION RELEASE BAR	イトユルメ オシボウ	1
15		PS-0600502-KP	SPRING PIN	スプリングピン	1
16		SS-6621216-SP	SCREW 3/16-32 L=12	ヒラネジ 3/16-32 L=12	1
17		NS-6620310-SP	NUT 3/16-32	ロツカクナツト 3/16-32	1
18		213-75456	THREAD TENSION ASM.	イトチヨウシ (クミ) カタハリ	1
19		226-18706	THREAD TAKE-UP SPRING A	イトトリバネ A	(1)
20		106-97605	THREAD TAKE-UP SPRING STUD	イトトリバネ ジク	(1)
21		B3127-051-000	TENSION RELEASE PIN SHORT	イトユルメ ピン	(1)
22		B3127-527-000	PIN B	イトユルメ ピン B	(1)
23		226-18102	TENSION RELEASE LEVER	イトユルメイタ	(1)
24		SD-0470281-SP	HINGE SCREW D=4.7 H=2.8	ダンネジ D=4.7 H=2.8	(2)
25		NS-6110310-SP	NUT 11/64-40	ロツカクナツト 11/64-40	(1)
26		226-89053	TENSION BASE PLATE ASM.	イトチヨウシイタ (ケツゴウ) カタハリツキ	(1)
27		101-24204	THREAD TENSION POST A	ダイ1イトチヨウシボウ A	(1)
28		107-41106	FIRST THREAD TENSION PLATE	ダイイテイトチヨウシサラ	(4)
29		110-45101	THREAD TENSION SPRING	ダイイチ イトチヨウシバネ	(2)
30		110-72402	THREAD TENSION NUT	ダイ 1 イトチヨウシ ナツト	(2)
31		101-24303	THREAD TENSION POST B	ダイ1イトチヨウシボウ B	(1)
32		131-38201	THREAD TENSION DISK	糸調子皿	(4)
33		226-17906	THREAD TENSION DISK PRESSER	イトチヨウシサラオサエ	(2)
34		B3129-053-000	TENSION SPRING	イトチヨウシバネ	(2)
35		B3120-125-000	ROTATING STOPPER	イトチヨウシサラ カイテンドメ	(2)
36		119-56802	THREAD TENSION KNOB BLUE	イトチヨウシツマミ (アオ)	(2)
37		226-17807	NUT	イトトリバネジクナツト	(1)
38		226-17708	TAKE-UP SPRING GUIDE	イトトリバネカケ	(1)
39		B3141-527-000	PRESSER COLLAR	イトトリバネ アンナイオサエ	(1)
40		226-18904	SET SCREW	イトトリバネカケトメネジ	(1)
41		226-18904	SET SCREW	イトトリバネカケトメネジ	(1)
42		SS-7090510-SP	SCREW 9/64-40 L=4.6	マルヒラネジ 9/64-40 L=4.6	(1)
43		B3138-527-000	ADJUSTING PLATE B	イトトリバネ チョーセツイタ B	(1)
44		226-17609	THREAD TENSION POST	イトトリバネカケダイ	(1)
45		226-18805	THREAD TAKE-UP SPRING B	イトトリバネ B	(1)
46		B3137-527-0A0	TAKE-UP SPRING GUIDE ASM.	イトトリバネ アンナイ クミ	(2)
47		B3139-527-000	COLLAR	イトトリバネ ジクカラ	(1)
48		B3142-527-000	TAKE-UP SPRING GUIDE PLATE	イトトリバネ アンナイイタ	(1)
49		B3143-527-000	TAKE-UP SPRING GUIDE STUD	イトトリバネ カケダイジク	(1)
50		WP-0450801-SP	WASHER	ヒラザガネ	(1)
51		B1449-526-000	REPOSITIONING LEVER SPRING	ヘンカン コチーレバー バネ	(1)
52		226-89103	REPOSITIONING LEVER	ヘンカンコチーレバー	(1)
53		SD-0601171-SP	HINGE SCREW D=6 H=11.7	ダンネジ D=6 H=11.7	(1)
54		106-97506	THREAD TENSION BRACKET A	イトトリバネ チョウセツイタ (A)	(1)
55		SS-4110615-SP	SCREW 11/64-40 L=6	ナベコネジ 11/64-40 L=6	(1)
56		WP-0501016-SP	WASHER 5X10.5X1	ヒラザガネ	(1)
57		SS-7110710-SP	SCREW 11/64-40 L=7	マルヒラネジ 11/64-40 L=7	2
58		230-06406	TENSION RELEASE BAR	イトユルメオシボウ	1
59	#01	213-48206	TENSION RELEASE BAR	イトユルメオシボウ	1
		NOTE(注記)	#01...SELECTIVE PARTS	選択部品	

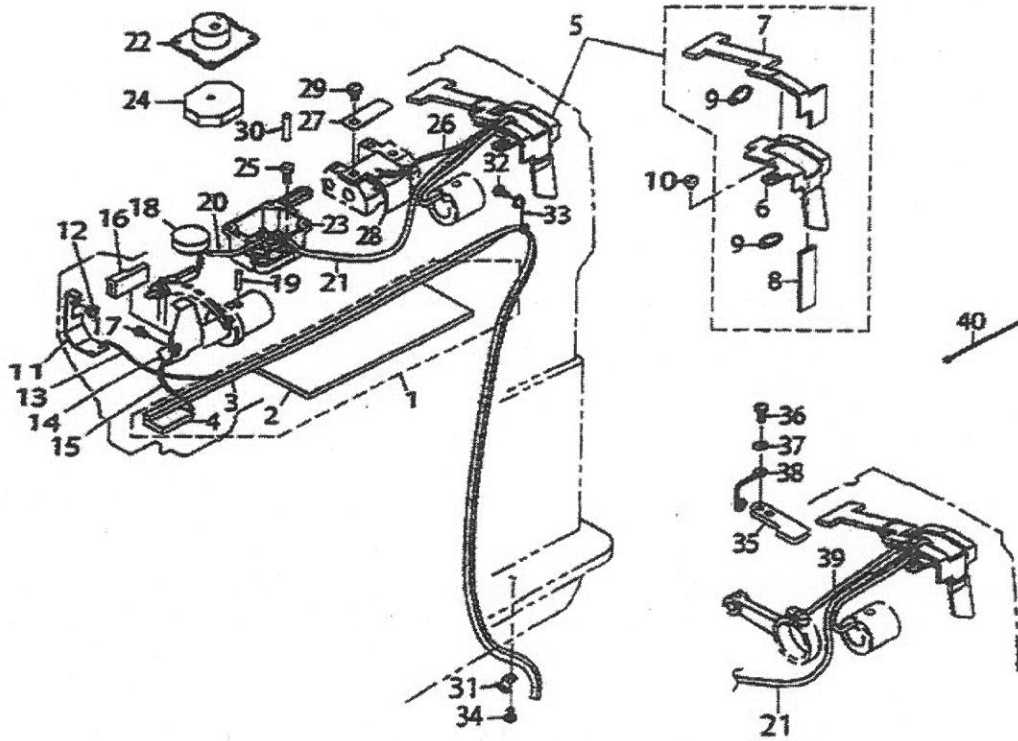
LOWER THREAD WINDER MECHANISM COMPONENTS



LOWER THREAD WINDER MECHANISM COMPONENTS

No.	Parts No.	Parts name	Remarks	Level	Cons	Qty
1	21357967	BOBBIN DEVICE ASM.				1
2	22537658	BOBBIN FITTING BASIS COMPL.		*		1
3	21357959	BOBBIN SHAFT COMPL.		*		1
4	22538151	BOBBIN CAM SHAFT COMPL.		*		1
5	23636202	BOBBIN LEVER		*		1
6	21356901	ADJUSTING PLATE		*		1
7	B152969000GA	PRESSUR FOOT SPRING		*		1
8	10618304	VERTICAL ROLLER WASHER		*		2
9	21358205	RUBBER RING		*		1
10	B3265210000	CUSHION		*		1
11	B1148555000	SPRING		*		1
12	RC0560711KP	RETAINING RING		*		1
13	RE0500000K0	E-RING		*		1
14	RO092270200	RUBBER RING		*		1
15	SS7091410SP	SCREW 9/64-40 L=13.5		*		1
16	SS6090520SP	SCREW 9/64-40 L=5.0		*		1
17	14512583	BOBBIN ADJUSTING PLATE		*		1
18	SS8110810TP	SCREW 11/64-40 L=8				3
19	10704807	BOBBIN FRICTION WHEEL				1
20	SM9050002TP	SCREW M5 L=6				2
21	10502300	THREAD CUTTER				1
22	SS6090620TP	SCREW				2
23	21355755	LOWER THREAD GUIDE ASM.				1
24	21355706	FITTING BASE		*		1
25	D3162555B00	THREAD GUIDE		*		1
26	NS6110310SP	NUT 11/64-40		*		1
27	D3169555H0B	TENSION SPRING NO.1		*		1
28	40113092	THREAD TENSION DISK		*		2
29	21378708	THREAD TENSION POST		*		1
30	11072402	THREAD TENSION NUT		*		1
31	SM6040800SP	SCREW				2
32	22538706	PACKING				1

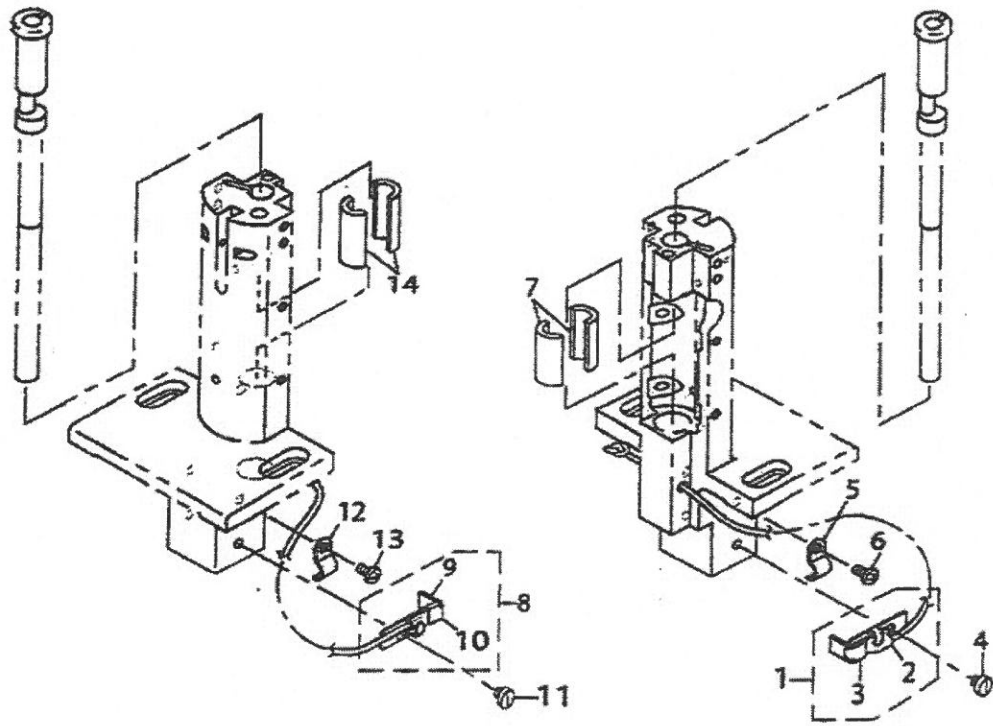
LUBRICATION COMPONENTS (FOR ARM)



LUBRICATION COMPONENTS (FOR ARM)

No.	Parts No.	Parts name	Remarks	Level	Cons	Qty
1	40642648	ARM ONCE THROUGH FELT ASM.				1
2	21345767	ARM ONCE THROUGH FELT A		*		1
3	40042647	ARM ONCE THROUGH FELT		*		1
4	21345965	FACE ONCE THROUGH FELT		*		1
5	21346358	FELT SUPPORT ASM.				1
6	21346389	FELT SUPPORT		*		1
7	21346507	FEED CHANGE FELT		*		1
8	21346488	FELT		*		1
9	EA3580B0000	CLIP CV-70S		*		2
10	SS6110488SP	SCREW 11/64-40 L=4.3				1
11	21340798	UPPER FEED OIL BAR PLATE				1
12	SS7110510SP	SCREW 11/64-40 L=5				1
13	CG202000000	OIL WICK				0.2
14	21347000	TAKE-UP OIL PLATE				1
15	CG202000000	OIL WICK				0.25
16	21347208	TAKE-UP LUBRICATION FELT				1
17	SS3090610SP	SCREW 9/64-40 L=6				1
18	21346882	FELT				1
19	BT412051000	FELT				1
20	CG252000000	OIL WICK				0.55
21	BT0500300EA	OIL TUBE				0.17
22	21407507	OIL TANK A				1
23	21407606	OIL TANK B				1
24	21407705	FELT				2
25	SS6111010SP	SCREW 11/64-40 L=9.5				2
26	CG202000000	OIL WICK	FOR PLC-1760L			0.15
27	21346101	LUBRICATION FELT PRESSER	FOR PLC-1760L			1
28	21346200	MUTUAL VERTICAL CHANGE FELT	FOR PLC-1760L			1
29	SS7120760SP	SCREW 3/16-28 L=7.0	FOR PLC-1760L			1
30	PS0500202KP	SPRING PIN 5X20				1
31	B3508512000	OIL FELT HOLDER				1
32	SS7110710SP	SCREW 11/64-40 L=7				1
33	22620504	OIL WICK HOLDER				1
34	SS4110615SP	SCREW 11/64-40 L=6				1
35	21339700	UPPER FEED STOPPER PLATE (B)	FOR PLC-1710,PLC-1760			1
36	SS7111120TP	SCREW	FOR PLC-1710,PLC-1760			2
37	WP0450801SD	WASHER 4.5X10X0.8	FOR PLC-1710,PLC-1760			1
38	22620504	OIL WICK HOLDER	FOR PLC-1710,PLC-1760			1
39	CG202000000	OIL WICK	FOR PLC-1710,PLC-1760			0.2
40	EA9500B0100	CABLE BAND				1

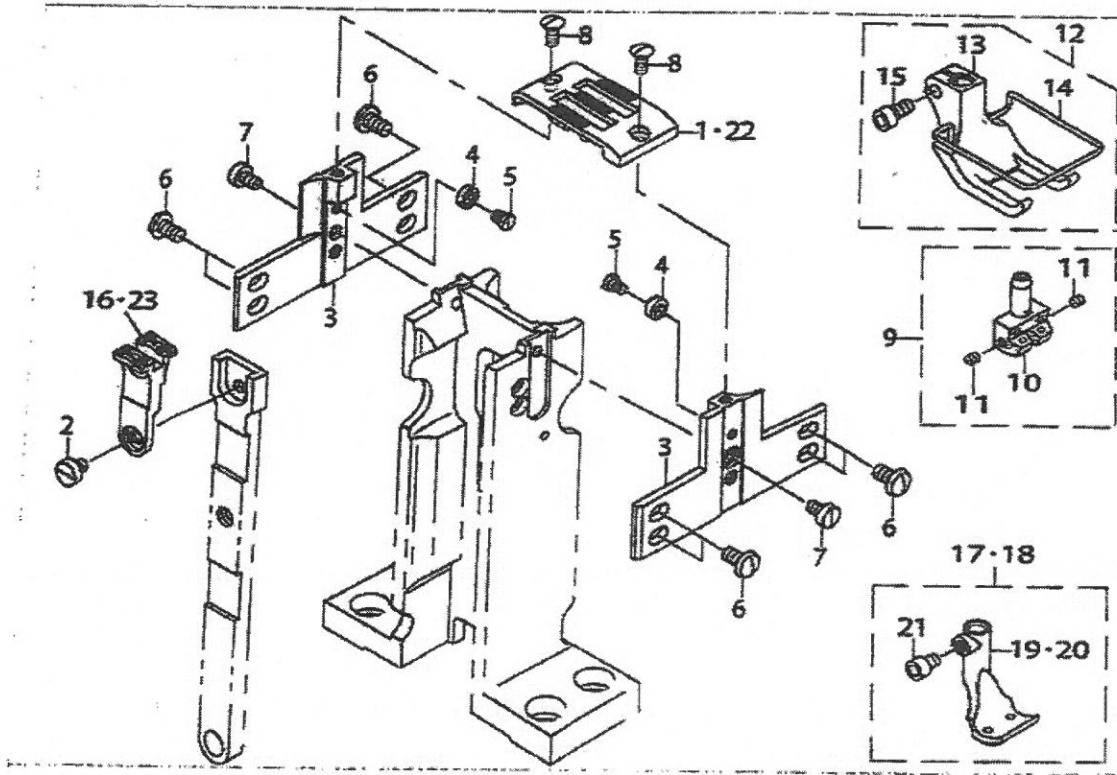
LUBRICATION COMPONENTS (FOR HOOK SHAFT BASE)



LUBRICATION COMPONENTS (FOR HOOK SHAFT BASE)

No.	Parts No.	Parts name	Remarks	Level	Cons	Qty
1	40038728	VILENE HOLDER ASM.				1
2	40038729	OIL WICK ASML		*		1
3	40038730	VILENE HOLDER		*		1
4	SS6110480SP	SCREW 11/64-40 L=4.3				1
5	D2611555B00A	CABLE HOLDER				1
6	SS4110815SP	SCREW 11/64-40 L=8				1
7	21345805	FACE ONCE THROUGH FELT				2
8	40038728	VILENE HOLDER ASM.	FOR PLC-1760,PLC-1760L			1
9	40038729	OIL WICK ASML		*		1
10	40038730	VILENE HOLDER		*		1
11	SS6110480SP	SCREW 11/64-40 L=4.3	FOR PLC-1760,PLC-1760L			1
12	D2611555B00A	CABLE HOLDER	FOR PLC-1760,PLC-1760L			1
13	SS4110815SP	SCREW 11/64-40 L=8	FOR PLC-1760,PLC-1760L			1
14	21345805	FACE ONCE THROUGH FELT	FOR PLC-1760,PLC-1760L			2

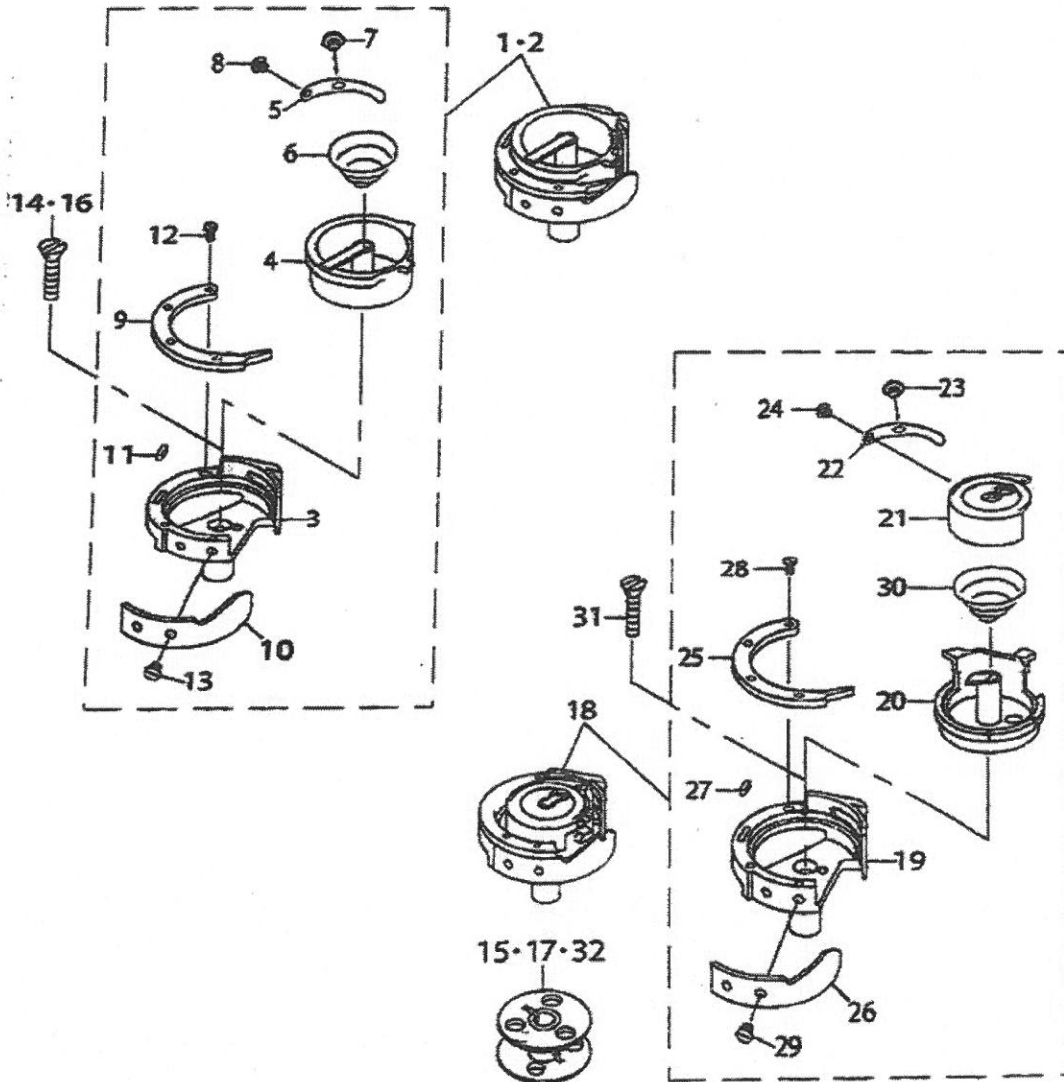
GAUGE COMPONENTS (STANDARD PARTS) (FOR PLC-1760, PLC-1780L)



GAUGE COMPONENTS (STANDARD PARTS) (FOR PLC-1760,PLC-1760L)

No.	Parts No.	Parts name	Remarks	Level	Cons	Qty
1	40038994	NEEDLE PLATE (10MM)	FOR PLC-1760			1
2	SS8110480SP	SCREW 11/64-40 L=4.3				1
3	40038737	THROAT PLATE HOLDER(10MM)				2
4	23007503	ECCENTRIC ROLLER				2
5	23007602	HINGE SCREW				2
6	SS5110810SP	SCREW 11/64-40 L=8				8
7	SS8888820SP	SCREW 9/64-40 L=6				2
8	SS2008810SP	SCREW 9/64-40 L=7.5			☆	2
9	40038774	NEEDLE CLAMP(10MM)ASM.				1
10	40038775	NEEDLE CLAMP(10MM)		*		1
11	SS8880310TP	SCREW 1/8-44 L=2.8		*	☆	2
12	40038795	PRESSER FOOT(10MM)ASM.				1
13	40038796	PRESSER FOOT(10MM)		*		1
14	40038794	FINGER GUIDE(10-12MM)		*		1
15	SM6040882TP	SCREW M4X0.7 L=8		*		1
16	40039007	FEED (3.3-2.4)(10MM)	FOR PLC-1760			1
17	40038842	FEED FOOT(10MM)ASML	FOR PLC-1760			1
18	40038898	FEED FOOT(10MM 60L)ASM.	FOR PLC-1760L			1
19	40038843	FEED FOOT(10MM)	FOR PLC-1760	*		1
20	40038899	FEED FOOT(10MM 60L)	FOR PLC-1760L	*		1
21	SM6040552TP	SCREW M4 L=4.5		*		1
22	40038893	THROAT PLATE(10MM 60L)	FOR PLC-1760L			1
23	40038897	FEED(10MM 60L)	FOR PLC-1760L			1

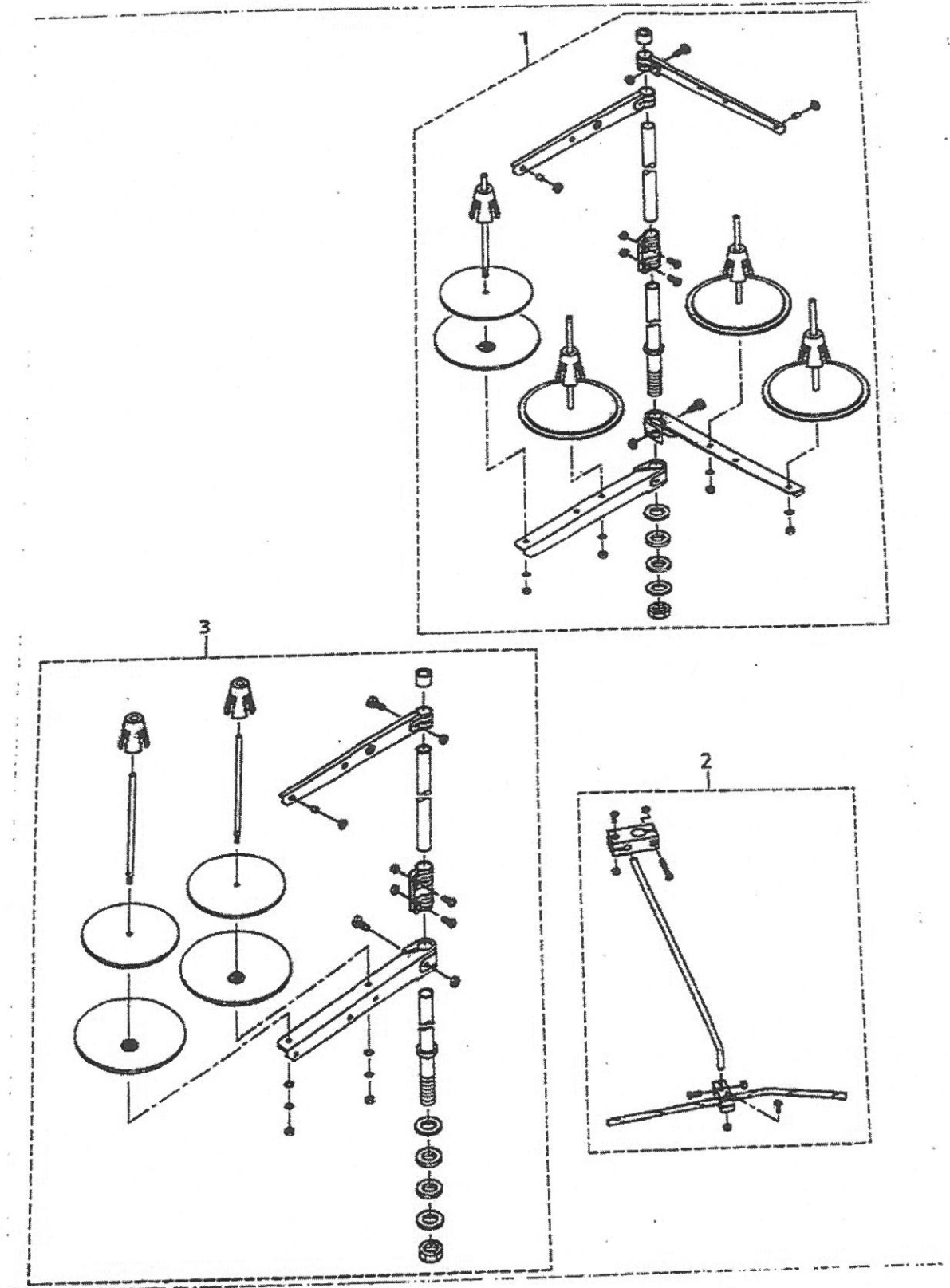
HOOK COMPONENTS



HOOK COMPONENTS

No.	Parts No.	Parts name	Remarks	Level	Cons	Qty
1	40039010	HOOK ASM.	FOR PLC-1710			1
2	40039010	HOOK ASM.	FOR PLC-1760			2
3	40038732	HOOK		*		1
4	40038867	INNER HOOK		*		1
5	21442207	TENSION SPRING		*		1
6	10723500	IDLING PREVENTION SPRING		*	☆	1
7	21432000	ADJUSTING SCREW		*	☆	1
8	21432109	ADJUSTING SPRING SCREW		*		1
9	23020908	INNER HOOK PRESSER WITH HORN		*		1
10	23058506	NEEDLE GUIDE		*		1
11	23026404	FELT		*		1
12	10723104	PRESSER SETSCREW		*	☆	3
13	22814008	SCREW		*	☆	2
14	SS1002810SP	SCREW 9/64-40 L=25.4	FOR PLC-1710		☆	1
15	10759603	ALUMINUM BOBBIN (DOUBLE-CUT)	FOR PLC-1710		☆	1
16	SS1002810SP	SCREW 9/64-40 L=25.4	FOR PLC-1760		☆	2
17	10759603	ALUMINUM BOBBIN (DOUBLE-CUT)	FOR PLC-1760		☆	2
18	40038870	HOOK ASM.(60L)	FOR PLC-1760L			2
19	40038732	HOOK		*		1
20	40038868	INNER HOOK		*		1
21	40038869	CAP		*		1
22	23058605	TENSION SPRING		*	☆	1
23	21432000	ADJUSTING SCREW		*		1
24	21432109	ADJUSTING SPRING SCREW		*		1
25	23020908	INNER HOOK PRESSER WITH HORN		*		1
26	23058506	NEEDLE GUIDE		*		1
27	23026404	FELT		*		1
28	10723104	PRESSER SETSCREW		*	☆	3
29	22814008	SCREW		*	☆	2
30	10723500	IDLING PREVENTION SPRING		*	☆	1
31	SS1002810SP	SCREW 9/64-40 L=25.4	FOR PLC-1760L		☆	2
32	10759603	ALUMINUM BOBBIN (DOUBLE-CUT)	FOR PLC-1760L		☆	2

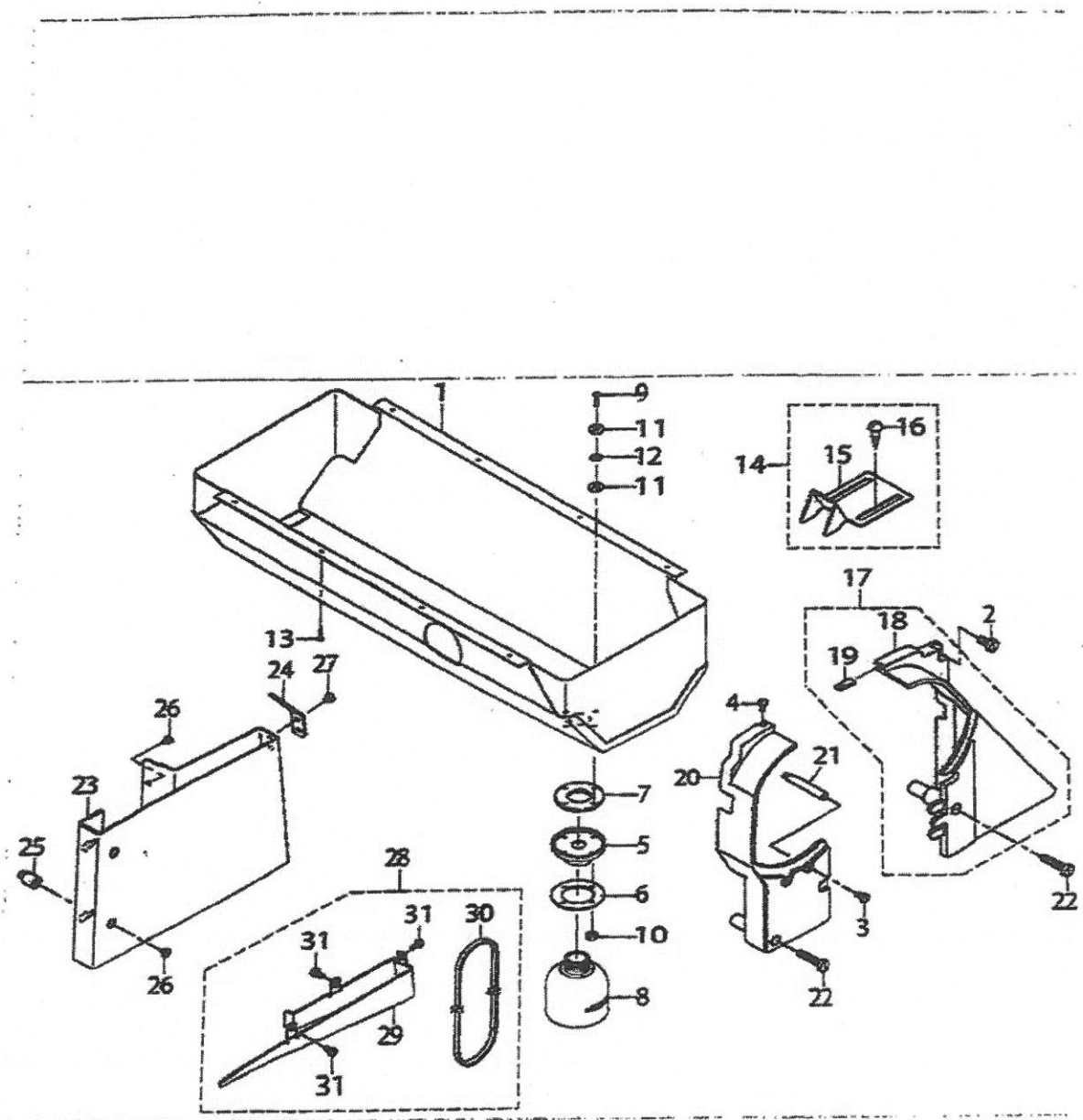
THREAD STAND COMPONENTS



THREAD STAND COMPONENTS

No.	Parts No.	Parts name	Remarks	Level	Cons	Qty
1	28910158	THREAD STANDING DEVICE ASM.	FOR PLC-1780/PLC-1790L			1
2	28910059	THREAD GUIDE ARM ASM.				1
3	48098354	THREAD STAND ASM.	FOR PLC-1710			1

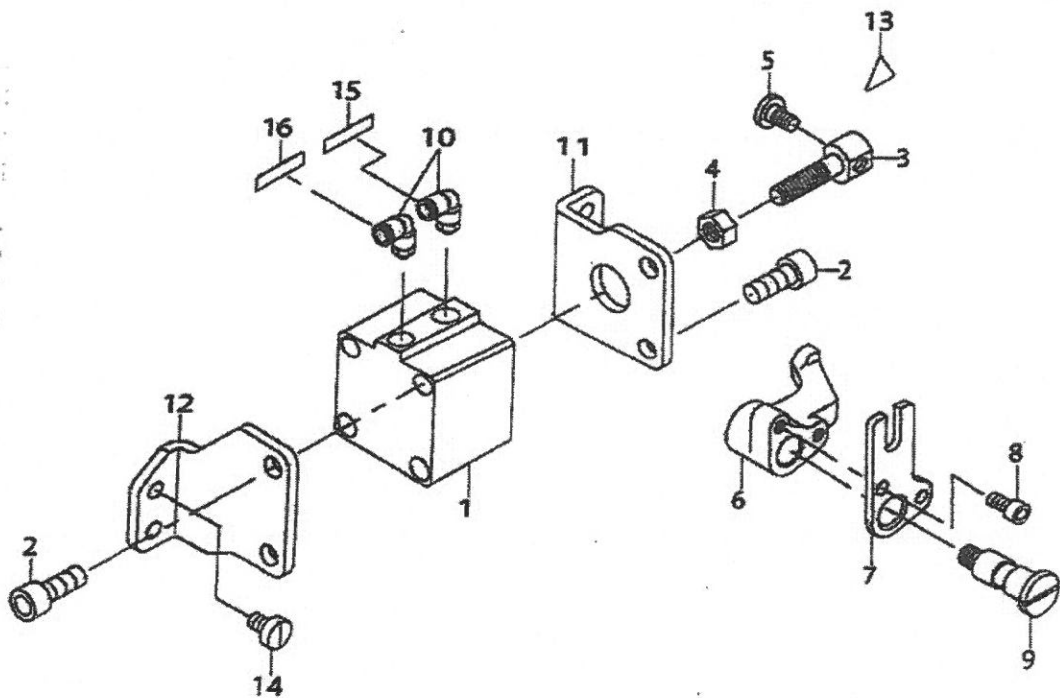
BELT COVER & OIL RESERVOIR COMPONENTS



BELT COVER & OIL RESERVOIR COMPONENTS

No.	Parts No.	Parts name	Remarks	Level	Cons	Qty
1	21351457	OIL RESERVOIR ASM.				1
2	SS6151440SP	SCREW 15/64-28 L=14				1
3	SS7110840SP	SCREW 11/64-40 L=7.8				1
4	SS5110740TP	SCREW 11/64-40 L=6.5				1
5	40025299	OIL POT JOINT				1
6	21379003	OIL MANAGEMENT WASHER				1
7	B8112220000	OIL SEAL				1
8	40025300	OIL POT				1
9	SM3031401SE	SCREW M3X0.5 L=14				4
10	NN6030001SC	NUT M3				4
11	10748101	OIL REMOVING SETSCREW PACKING				8
12	WP0320501SC	WASHER M3				4
13	SK3241001SC	WOOD SCREW D=2.4 L=16				8
14	10755254	BELT COVER C ASML (FOR JE)				1
15	10755205	BELT COVER C(JE)		*		1
16	SK3482500SC	WOOD SCREW D=4.8 L=25		*		2
17	21351150	BELT COVER ASML (RIGHT)				1
18	21351101	BELT COVER (RIGHT)		*		1
19	21351002	BELT COVER AUXILIARY PLATE		*		1
20	21351200	BELT COVER (LEFT)				1
21	D0232241E00	BELT COVER SUPPORT A				1
22	SS6153040SP	SCREW 15/64-28 L=30				2
23	40038823	BELT COVER (UNDER)				1
24	40017309	BELT COVER LID				1
25	40038824	BELT COVER STUD				2
26	SS6110480SP	SCREW 11/64-40 L=4.3				4
27	SS6110480SP	SCREW 11/64-40 L=4.3				2
28	40080924	BELT COVER (FOR OBLIQUE TABLE)	OPTIONAL PARTS			1
29	40078909	BELT COVER(FOR OBLQUE TABLE)		*		1
30	MTJVH00550A	V-BELT 55INCH		*		1
31	SS6110480SP	SCREW 11/64-40 L=4.3		*		3

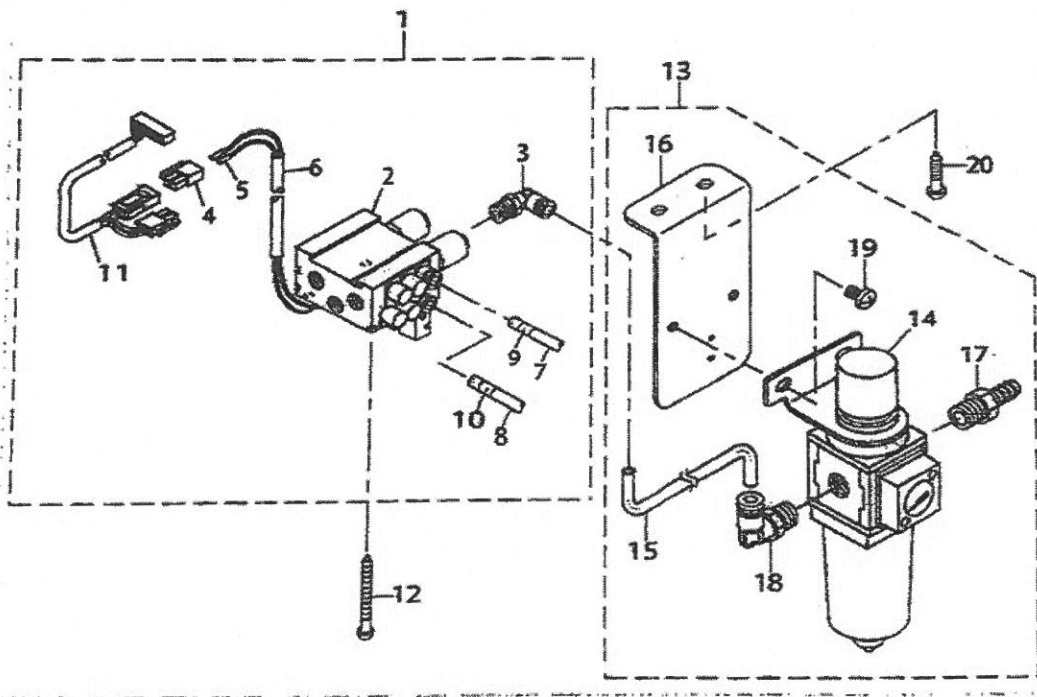
AUTOMATIC PRESSER LIFTING MECHANISM COMPONENTS (OPTIONAL PARTS)



AUTOMATIC PRESSER LIFTING MECHANISM COMPONENTS (OPTIONAL PARTS)

No.	Parts No.	Parts name	Remarks	Level	Cons	Qty
1	PA400150190	AIR CYLINDER				1
2	SM6082002TP	SCREW M8 L=20				4
3	21356506	CYLINDER CONNECTING SCREW				1
4	NM6080001SE	NUT M8				1
5	SD0720331SP	HINGE SCREW D=7.24 H=3.3				1
6	21389509	PRESSER LIFTER LEVER A				1
7	21356903	PRESSER LIFTER LEVER B				1
8	SM0051002TP	SCREW M5X0.8 L=10				2
9	21356704	SHAFT				1
10	PJ304065101	ELBOW UNION 6XPT1/8				2
11	21356308	CYLINDER STAY(FRONT)				1
12	21356407	CYLINDER STAY(REAR)				1
13	CM300260001	ATTENTION SEAL 16				1
14	SS6151040SP	SCREW 15/64-28 L=10				4
15	HX000295000A	WIRE MARK(2)				1
16	HX000295000B	WIRE MARK(3)				1

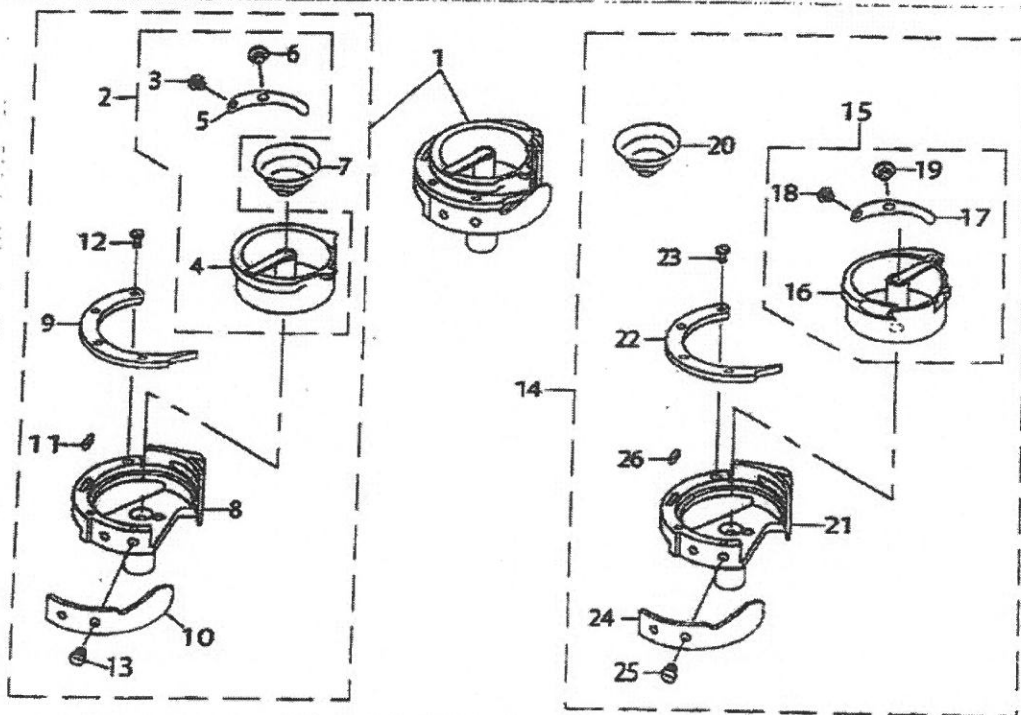
AIR MECHANISM COMPONENTS (OPTIONAL PARTS)



AIR MECHANISM COMPONENTS (OPTIONAL PARTS)

No.	Parts No.	Parts name	Remarks	Level	Cons	Qty
1	40183003	AIR APPARATUS(P)ASM.				1
2	40038904	MAGNETIC VALVE(P)		*		1
3	GAK29010000	ELBOW B		*		1
4	HK034610020	2-POLE NYLON PLUG		*		1
5	HK03464000A	TERMINAL FEMALE		*		2
6	GAKA1503000	INSULATION TUBE		*		0.2
7	BT0600401EB	TUBE		*		1.3
8	BT0600401EB	TUBE		*		1.3
9	HX00295000A	WIRE MARK(2)		*		4
10	HX00295000B	WIRE MARK(3)		*		4
11	40105811	CORD ASM.		*		1
12	SIC335001SE	WOOD SCREW D=3.8 L=50				4
13	40038722	FILTER REGULATOR ASM.				1
14	PF0552170A0	FILTER REGULATOR		*		1
15	BT0600401EB	TUBE		*		1
16	40038723	FILTER REGULATOR MOUNTING PLATE		*		1
17	40107618	NIPPLE		*		1
18	GAK29009000	ELBOW		*		1
19	SM4061001SB	SCREW M6 L=10		*		2
20	SIC3482501SE	WOOD SCREW D=4.8 L=25				2

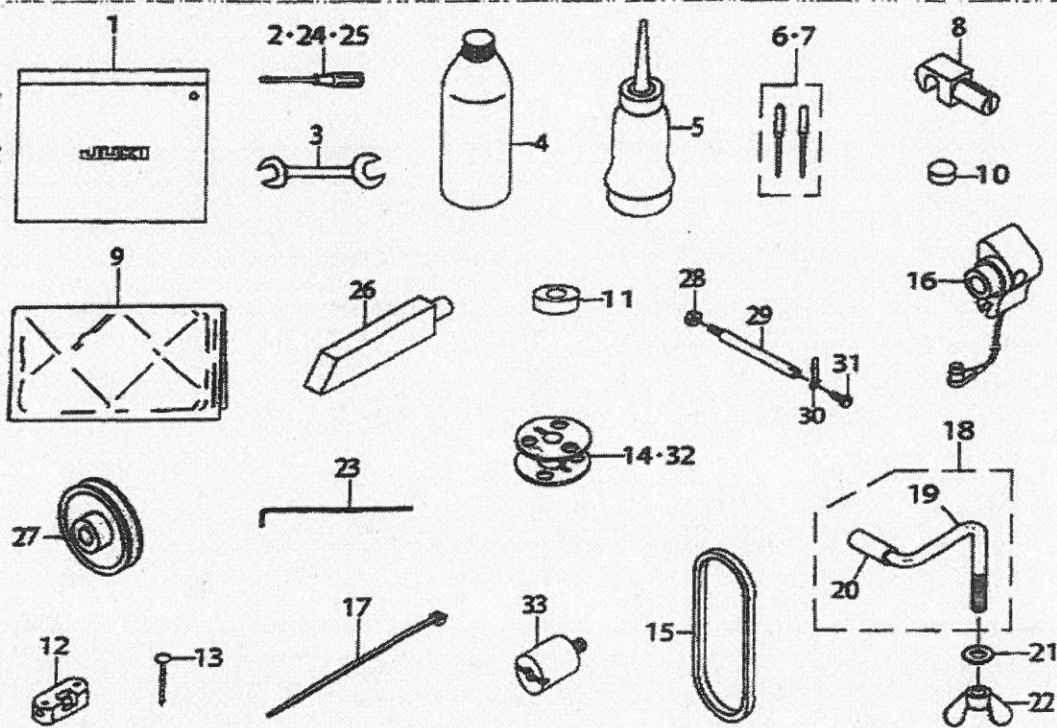
HOOK COMPONENTS (OPTIONAL PARTS)



HOOK COMPONENTS (OPTIONAL PARTS)

No.	Parts No.	Parts name	Remarks	Level	Cons	Qty
1	40066698	HOOK ASML		*		2
2	40066795	INNER HOOK ASML		*		1
3	10723401	TENSION SPRING SETSCREW		*		1
4	40066699	INNER HOOK		*		1
5	23058605	TENSION SPRING		*		1
6	21432000	ADJUSTING SCREW		*		1
7	10723500	IDLING PREVENTION SPRING		*		1
8	40038732	HOOK		*		1
9	23026008	INNER HOOK PRESSER WITH HORN		*		1
10	23058506	NEEDLE GUIDE		*		1
11	23026404	FELT		*		1
12	10723104	PRESSER SETSCREW		*		3
13	22814008	SCREW		*		2
14	40066698	HOOK ASML	FOR PLC-1760L	*		1
15	40066795	INNER HOOK ASML		*		1
16	40066699	INNER HOOK		*		1
17	23058605	TENSION SPRING		*		1
18	10723401	TENSION SPRING SETSCREW		*		1
19	21432000	ADJUSTING SCREW		*		1
20	10723500	IDLING PREVENTION SPRING		*		1
21	40038732	HOOK		*		1
22	23026008	INNER HOOK PRESSER WITH HORN		*		1
23	10723104	PRESSER SETSCREW		*		3
24	23058506	NEEDLE GUIDE		*		1
25	22814008	SCREW		*		2
26	23026404	FELT		*		1







ACCESSORIES PARTS COMPONENTS


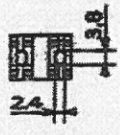

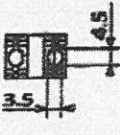

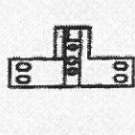


ACCESSORIES PARTS COMPONENTS

No.	Parts No.	Parts name	Remarks	Level	Cons	Qty
1	22932800	ACCESSORIE BAG				1
2	22933006	SCREW DRIVER LARGE				1
3	B9113012000	WRENCH (8X10)				1
4	MDFFRX2700C0	NEW DEFREX OIL NO.2(700CC)				1
5	J1067000000	OILER				1
6	MC321002002	NEEDLE 134-35 #200-2	FOR PLC-1760L			1
7	MC321001402	NEEDLE 134-35 #140-2	FOR PLC-1710,PLC-1760			1
8	B8213012000	BED HINGE CONNECTION				2
9	40048536	HEAD_COVER				1
10	B8206012000	FELT CUSHION	HEAD ONLY, HEAD AND MOTOR DELIVERY ONLY			4
11	B8209012000	RUBBER CUSHION	HEAD ONLY, HEAD AND MOTOR DELIVERY ONLY			4
12	10529600	WASHER	HEAD ONLY, HEAD AND MOTOR DELIVERY ONLY			2
13	10539906	SET NAIL	HEAD ONLY, HEAD AND MOTOR DELIVERY ONLY			8
14	10759603	ALUMINIUM BOBBIN (DOUBLE-CUT)	FOR PLC-1760,PLC-1760L			2
15	MTJVH00530A	V BELT 53INCH	OPTIONAL PARTS (FOR PLC-1760L)			1
16	40026920	SYNCHRONIZER ASM.	OPTIONAL PARTS (FOR PLC-1760L)			1
17	EA3500B0100	CABLE BAND	OPTIONAL PARTS (FOR PLC-1760L)			3
18	40038827	BED CLAMP STICK ASM.				1
19	40038828	BED CLAMP STICK		*		1
20	BT1200601EF	TUBE		*		8.03
21	WP0841601SC	WASHER 8.4X17.4X1.6				1
22	NM9060001SC	NUT				1
23	10777407	WRENCH 2.5MM	FOR PLC-1760,PLC-1760L			1
24	22933105	SCREW DRIVER MIDDLE				1
25	22933204	SCREW DRIVER SMALL				1
26	10528800	FRAME SUPPORT BAR				1
27	MTSP00700C0	MOTOR PULLEY ASM. P.C.D 70	OPTIONAL PARTS (FOR PLC-1760L)			1
28	NS6150430SP	NUT 15/64-28	OPTIONAL PARTS (FOR PLC-1760L)			1
29	D7101245E00	SYNCHRONIZER HOLDER STUD	OPTIONAL PARTS (FOR PLC-1760L)			1
30	B9109246000	DETECTOR SUPPORT PLATE	OPTIONAL PARTS (FOR PLC-1760L)			1
31	SS7110710SP	SCREW 11/64-40 L=7	OPTIONAL PARTS (FOR PLC-1760L)			1
32	10759603	ALUMINIUM BOBBIN (DOUBLE-CUT)	FOR PLC-1710			1
33	40101368	PANEL STUD	OPTIONAL PARTS (FOR PLC-1760L)			2

TABLE OF EXCHANGING GAUGE PARTS (FOR PLC-1760, PLC-1760L)

PLC-1760	○		○		○		○		○			
PLC-1760L	○		○		○		○		○			
NEEDLE GUAGE	THROAT PLATE				FRONT PLATE FOR LOWER FEATHERING 下テープ用前板		PRESSER FOOT ASM.		PRESSER FOOT WITH GUIDE ASM. ガイド付押足			
針番	針番						押足		ガイド付押足			
												
	Stitch length 縫い目幅: 9mm		Stitch length 縫い目幅: 12mm		Stitch length 縫い目幅: 9mm							
mm	Ref.No	Part No.	Ref.No	Part No.	Ref.No	Part No.	Ref.No	Part No.	Ref.No	Part No.		
6	1	400-38996	-	-	6	400-39004	10	400-38890	14	400-38810		
8	2	400-38995	-	-	7	400-39001	11	400-38797	15	400-38808		
10	3	400-38994	5	400-38893	8	400-38999	12	400-38795	16	400-38806		
12	4	400-38993	41	400-95752	9	400-38997	13	400-38792	17	400-38902		

PLC-1760	○		○		○		○		○			
PLC-1760L	○		○		○		○		○			
NEEDLE GUAGE	FEED				NEEDLE CLAMP ASM.		THROAT PLATE HOLDER					
針番	送り				針留		針留受け					
												
	2.4		3.5		3.5							
mm	Ref.No	Part No.	Ref.No	Part No.	Ref.No	Part No.	Ref.No	Part No.	Ref.No	Part No.		
6	18	400-39009	-	-	-	-	23	400-38778	27	400-38791		
8	19	400-39008	-	-	-	-	24	400-38776	28	400-38789		
10	20	400-39007	22	400-38897	-	-	25	400-38774	29	400-38787		
12	21	400-39006	-	-	42	400-95751	26	400-38772	30	400-38785		





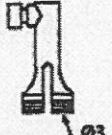

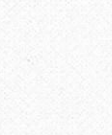
PLC-1760	○		○		○		○	
PLC-1760L	○		○		○		○	
NEEDLE GUAGE	FEED FOOT ASM.				FEED FOOT FOR GUIDE			
針番	送り足				ガイド送り足			
								
	Ø2.1		Ø3		Ø2.1		Ø3	
mm	Ref.No	Part No.	Ref.No	Part No.	Ref.No	Part No.	Ref.No	Part No.
6	31	400-38846	-	-	36	400-38854	-	-
8	32	400-38844	-	-	37	400-38852	-	-
10	33	400-38842	35	400-38898	38	400-38850	40	400-39271
12	34	400-38840	43	400-95748	39	400-38848	44	400-95750

TABLE OF EXCHANGING GAUGE PARTS (FOR PLC-1760, PLC-1760L)

No.	Parts No.	Parts name	Remarks	Level	Cons	Qty
1	40038896	THROAT PLATE(6MM)				1
2	40038895	THROAT PLATE(8MM)				1
3	40038894	THROAT PLATE(10MM)				1
4	40038893	THROAT PLATE(12MM)				1
5	40038893	THROAT PLATE(16MM 60L)				1
6	40038894	THROAT PLATE(6MM)ASM.				1
7	40038891	THROAT PLATE(8MM)ASM.				1
8	40038899	THROAT PLATE(10MM)ASM.				1
9	40038897	THROAT PLATE(12MM)ASM.				1
10	40038890	PRESSER FOOT(6MM)ASM.	FOR PLC-1760			1
11	40038797	PRESSER FOOT(8MM)ASM.	FOR PLC-1760			1
12	40038795	PRESSER FOOT(10MM)ASM.				1
13	40038792	PRESSER FOOT(12MM)ASM.	FOR PLC-1760			1
14	40038810	PRESSER FOOT WITH GUIDE(6MM)ASM.	FOR PLC-1760			1
15	40038808	PRESSER FOOT WITH GUIDE(8MM)ASM.	FOR PLC-1760			1
16	40038806	PRESSER FOOT WITH GUIDE(10MM)ASM.				1
17	40038802	PRESSER FOOT WITH GUIDE(12MM)ASM.	FOR PLC-1760			1
18	40038800	FEED(6MM)				1
19	40038808	FEED(8MM)				1
20	40038807	FEED(10MM)				1
21	40038806	FEED(12MM)				1
22	40038897	FEED(16MM 60L)				1
23	40038778	NEEDLE CLAMP(6MM)ASM.	FOR PLC-1760			1
24	40038776	NEEDLE CLAMP(8MM)ASM.	FOR PLC-1760			1
25	40038774	NEEDLE CLAMP(10MM)ASM.				1
26	40038772	NEEDLE CLAMP(12MM)ASM.	FOR PLC-1760			1
27	40038791	THROAT PLATE HOLDER(6MM)	FOR PLC-1760			1
28	40038789	THROAT PLATE HOLDER(8MM)	FOR PLC-1760			1
29	40038787	THROAT PLATE HOLDER(10MM)				1
30	40038785	THROAT PLATE HOLDER(12MM)	FOR PLC-1760			1
31	40038846	FEED FOOT(6MM)ASM.				1
32	40038844	FEED FOOT(8MM)ASM.				1
33	40038842	FEED FOOT(10MM)ASM.				1
34	40038840	FEED FOOT(12MM)ASM.				1
35	40038838	FEED FOOT(16MM 60L)ASM.				1
36	40038854	FEED FOOT FOR GUIDE(6MM)ASM.				1
37	40038852	FEED FOOT FOR GUIDE(8MM)ASM.				1
38	40038850	FEED FOOT FOR GUIDE(10MM)ASM.				1
39	40038848	FEED FOOT FOR GUIDE(12MM)ASM.				1
40	40039271	FEED FOOT FOR GUIDE(16MM 60L)ASM.				1
41	40095752	THROAT PLATE(12MM 60L)	OPTIONAL PARTS (FOR PLC-1760L)			1
42	40095751	FEED(12MM 60L)	OPTIONAL PARTS (FOR PLC-1760L)			1
43	40095748	FEED FOOT(12MM 60L)ASM.	OPTIONAL PARTS (FOR PLC-1760L)			1
44	40095750	FEED FOOT FOR GUIDE(12MM 60L)ASM.	OPTIONAL PARTS (FOR PLC-1760L)			1