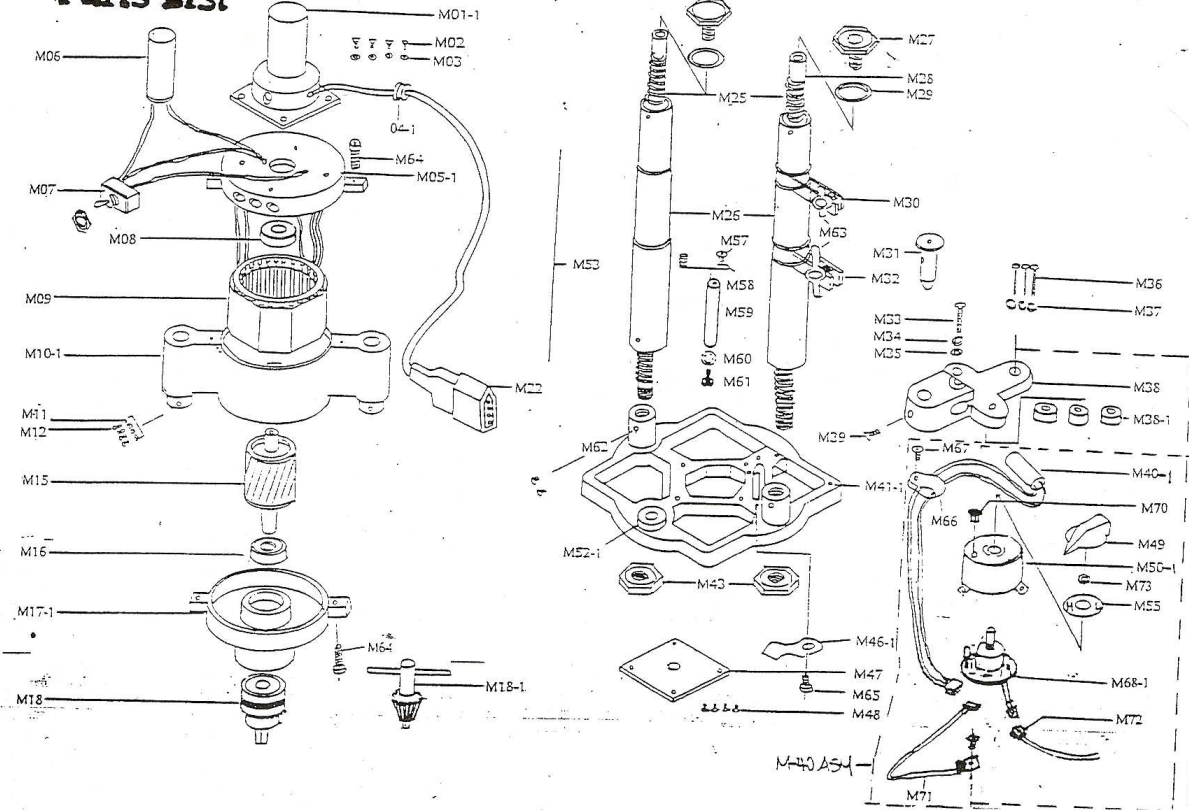


# INSTRUCTIONS

## INSTRUCTIONS

1. ALL MACHINES ARE EQUIPPED WITH DRILL NEEDLES SIZE 2.0MM WHEN SHIPPING. CHANGE DRILL NEEDLE SIZE TO 1.6MM TOGETHER WITH GUIDE TUBE NO. 31 WHEN IN NEED. DRILL NEEDLES 1.6MM AND MACHING GUIDE TUBES ARE SUPPLIED WITH THE MACHINE.
2. TURN KNOB NO. 49 WHEN HEATING IS NEEDED. THE TEMPERATURE CAN BE OBTAINED AS HIGH AS YOU TURN KNOB CLOCKWISE AND THE PILOT LAMP WILL BE BRIGHTER.
3. ALWAYS USE THE SUITABLE TEMPERATURE. WHEN OVERHEAT, PLEASE TURN KNOB NO.49 BACK A LITTLE BIT.
4. WHEN USING HEATER, KEEP HANDS AWAY FROM THE HEATING ELEMENT NO. 38 TO AVOID BURNT FINGER.
5. ALWAYS KEEP MACHINE HORIZONTALLY WHEN IN OPERATION.
6. BE SURE TO WIPE OUT THE DRILL NEEDLE WITH SILICON OIL OR SEWING MACHINE OIL AFTER EACH USE.

## Parts List



- ### CLOTH DRILL PARTS LIST
- M01-1 HANDLE
  - M02 SCREW
  - M03 WASHER
  - M04-1 RUBBER COLLAR
  - M05-1 TOP COVER
  - M06 CONDENSER (110V/uf 220V/4u)
  - M07 SWITCH
  - M08 BEARING
  - M09 STATOR (110V · 220V · 240V)
  - M10-1 MOTOR HOUSING
  - M11 SPRING WASHER
  - M12 SCREW
  - M15 ROTOR
  - M16 BEARING
  - M17-1 LOWER COVER
  - M18 CHUCK
  - M18-1 CHUCK KEY
  - M22 4P COMMECTOR
  - M25 SPRING
  - M26 TELESCOPIC TUBE
  - M27 HOLLOW SCREW
  - M28 HOLLOW TUBE
  - M29 O-RING
  - M30 CLAMP SMALL
  - M31 GUIDE TUBE (2.1mm or 1.7mm)
  - M32 CLAMP LARGE
  - M34 SPRING WASHER
  - M35 WASHER
  - M36 SCREW
  - M37 SPRING WASHER
  - M38 HEATER FIXED BASE
  - M38-1 INSULATION WASHER
  - M39 SCREW
  - M40-1 HEATER (110V · 220V · 240V)
  - M41-1 BASE PLATE
  - M43 NUT
  - M46-1 FIXING PLATE
  - M47 ACRYLIC BOARD
  - M48 SCREW
  - M49 TURN KNOB
  - M50-1 THERMO CONTROL COVER
  - M52-1 HORIZONTAL LEVEL
  - M53 DRILL (2.0mm or 1.6mm)
  - M54 LIGHT (110V · 220V)
  - M55 LABEL
  - M57 SCREW
  - M58 SPRING
  - M59 SPRING FIXED BAR
  - M60 SPRING WASHER
  - M61 SCREW
  - M62 SCREW
  - M63 SCREW
  - M64 SCREW
  - M65 SCREW
  - M66 CLAMP LARGE
  - M67 SCREW
  - M68-1 HOLLOW TUBE
  - M70 SLEEVE
  - M71 THERMOCONTROL
  - M72 CLDE COMPLETE WITH EARTH
  - M73 NUT