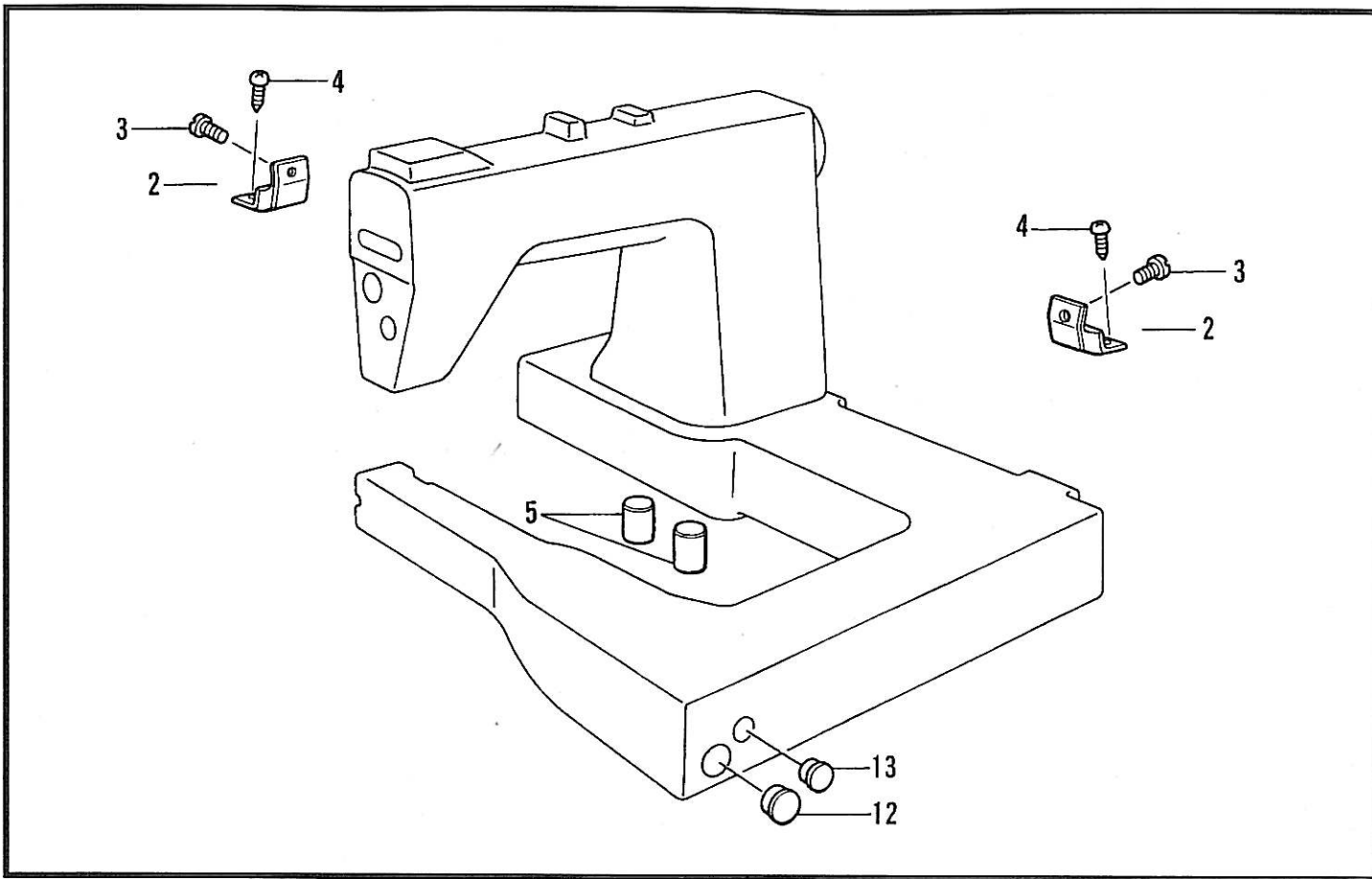
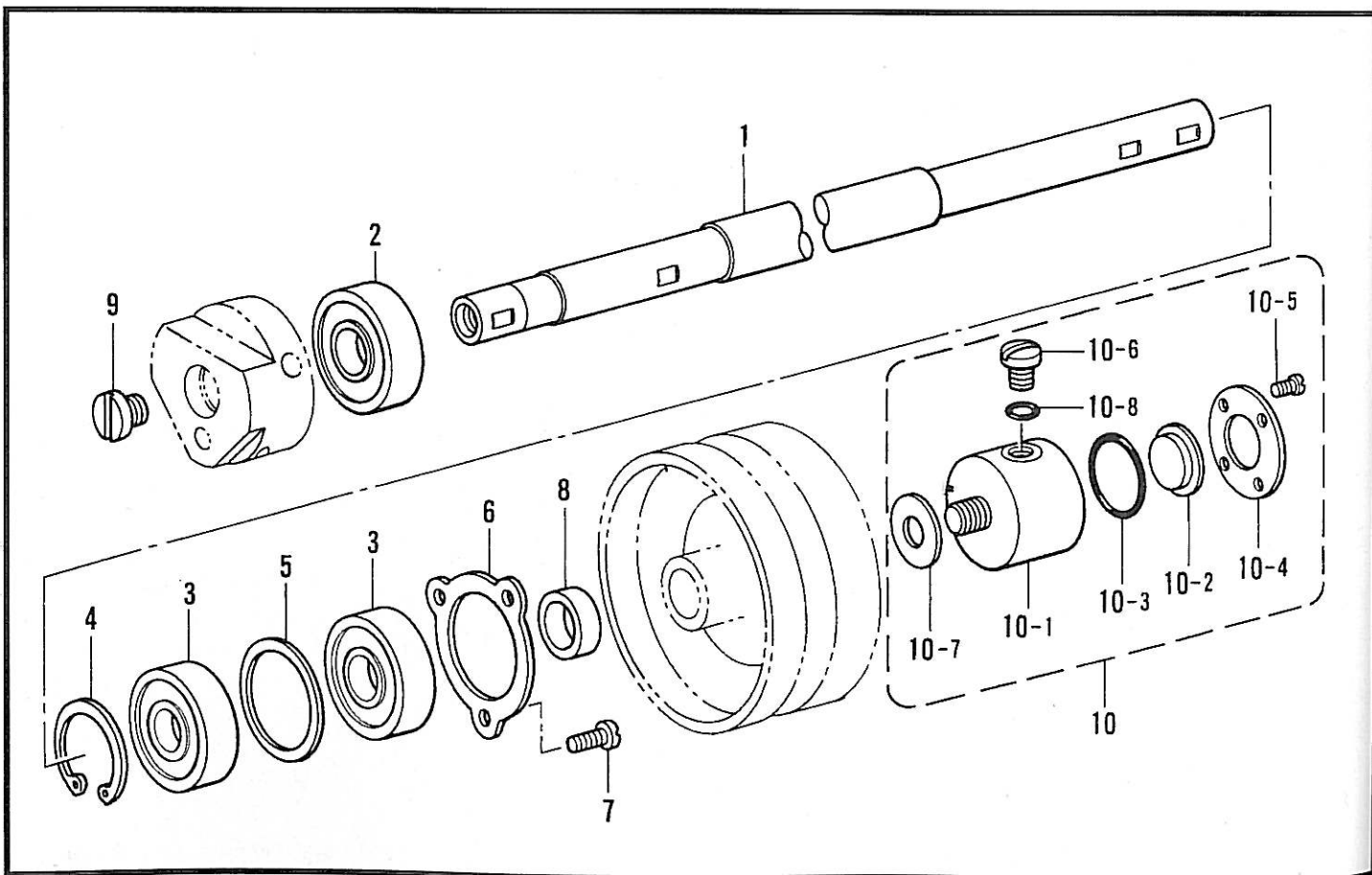


机身/Machine body



B. 上轴机械装置/Upper shaft mechanism



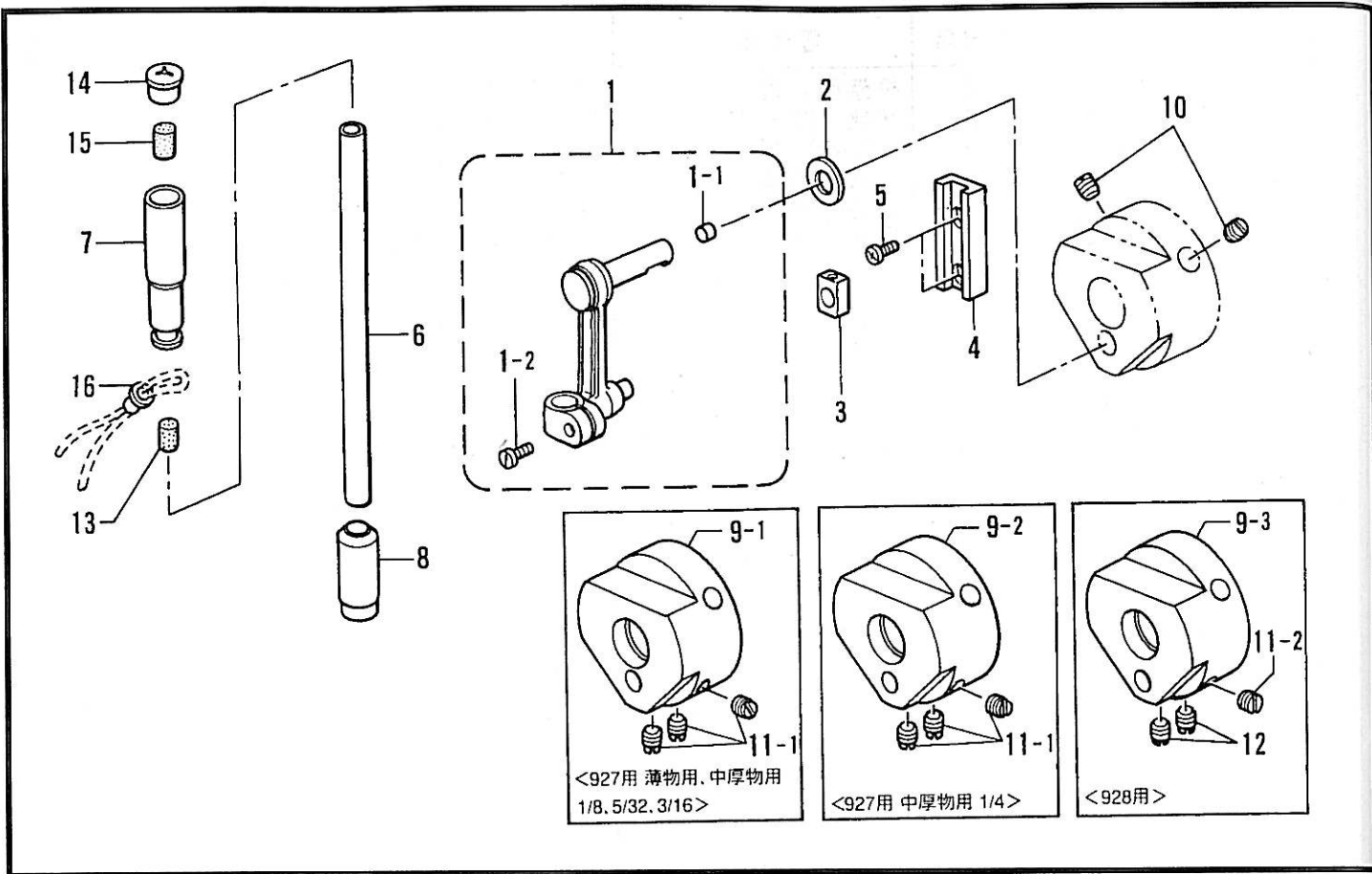
机身/Machine body

| 参考号 | 代码        | 数量 | 零件名称            | NAME OF PARTS             | RM |
|-----|-----------|----|-----------------|---------------------------|----|
| 2   | 105337001 | 2  | 机架固定片           | CUSHION ASSY              |    |
| 3   | 105146001 | 2  | 螺丝, SM6.35      | SCREW, SM6.35             |    |
| 4   | 0B0622502 | 2  | 自攻螺丝, 圆的M6.2x25 | WOOD SCREW, ROUND M6.2X25 |    |
| 5   | 105341051 | 2  | 底部橡胶垫           | BASE CUSHION              |    |
| 12  | 150697001 | 1  | 加油标尺            | OIL GAUGE WINDOW          |    |
| 13  | 104449009 | 1  | 油塞              | RUBBER CAP, 15.5          |    |

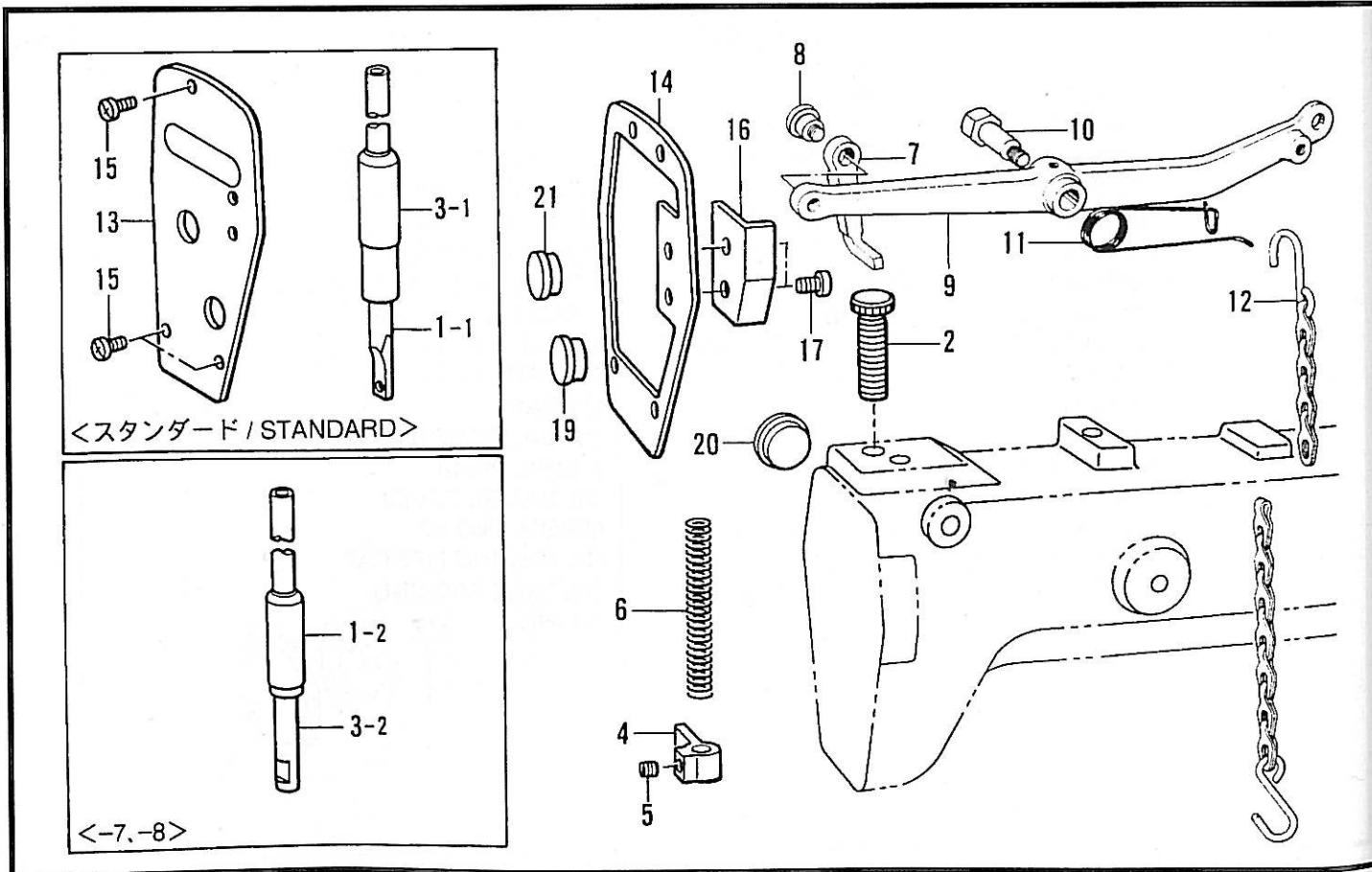
B.上轴机械装置/Upper shaft mechanism

| 参考号  | 代码        | 数量 | 零件名称          | NAME OF PARTS           | RM |
|------|-----------|----|---------------|-------------------------|----|
| 1    | S40314001 | 1  | 上轴            | UPPER SHAFT             |    |
| 2    | 076302850 | 1  | 轴承, 6302ZZ    | BALL BEARING, 6302ZZ    |    |
| 3    | 072630260 | 2  | 轴承, 6302VV    | BALL BEARING, 6302VV    |    |
| 4    | 048420242 | 1  | 卡簧, C42       | RETAINING RING, C42     |    |
| 5    | S40315051 | 1  | 轴承间隔垫片        | BEARING SPACER          |    |
| 6    | S40316051 | 1  | 轴承压紧垫片        | BEARING PRESSER         |    |
| 7    | 062711012 | 3  | 挡圈            | SCREW, PAN SM4.76-32X10 |    |
| 8    | S40318051 | 1  | 松紧垫片螺钉        | UPPER SHAFT COLLAR      |    |
| 9    | S40317001 | 1  | 螺丝, 平头 SM9.52 | SCREW, SM9.52           |    |
| 10   | S40812001 | 1  | 油槽配件          | OIL TANK ASSY           |    |
| 10-1 | S40383001 | 1  | 存油器           | OIL TANK                |    |
| 10-2 | 104547001 | 1  | 加油器标尺         | OIL GAUGE WINDOW        |    |
| 10-3 | 081014670 | 1  | 密封圈, PW14     | O RING, PW14            |    |
| 10-4 | 151074009 | 1  | 油量标尺盖         | OIL GAUGE COVER         |    |
| 10-5 | 100257010 | 4  | 螺丝, SM3.57    | SCREW, SM3.57           |    |
| 10-6 | 111193001 | 1  | 加油器螺钉         | OIL FEEDING PIPE CAP    |    |
| 10-7 | 105071001 | 1  | 加油器固定片        | OIL TANK PACKING        |    |
| 10-8 | 111194001 | 1  | 密封圈           | O RING                  |    |

# 针杆装置/Needle bar mechanism



# D1.压脚杆装置(927)/ Presser bar mechanism(927)



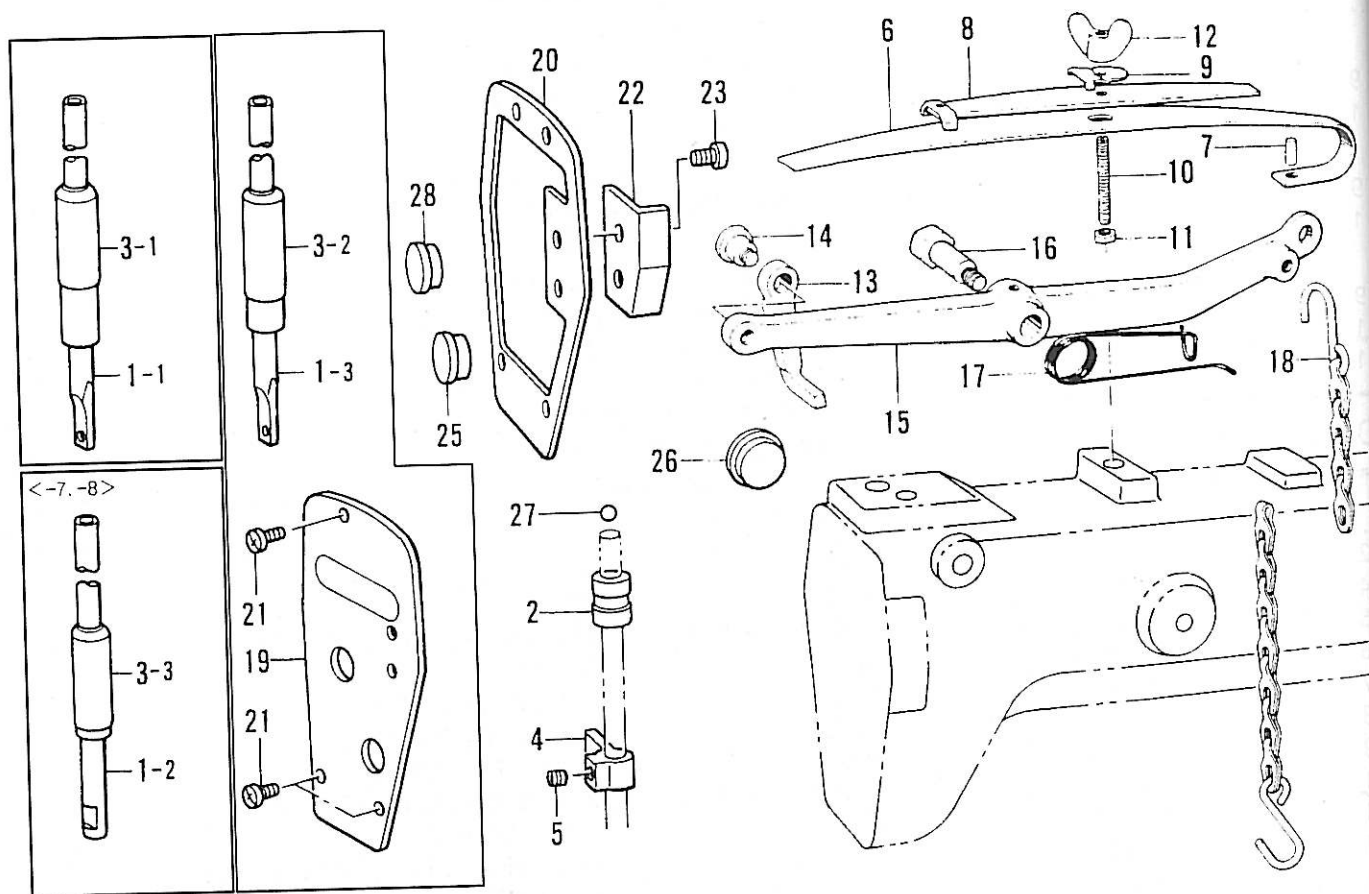
### C.针杆装置/Needle bar mechanism

| 参考号   | 代码        | 数量 | 零件名称                            | NAME OF PARTS  | RM |
|-------|-----------|----|---------------------------------|--|----|
| 1     | S40268001 | 1  | 挑线杆组件                           | THREAD TAKE-UP LEVER ASSY                            |    |
| 1-1   | 142274009 | 1  | 橡胶塞                             | RUBBER CAP, 4.2                                      |    |
| 1-2   | 140004001 | 1  | 螺丝, SM3. 57                     | SCREW, SM3.57  |    |
| 2     | 107153001 | 1  | 垫圈                              | WASHER   |    |
| 3     | 102630001 | 1  | 针杆导向滑块                          | NEEDLE BAR GUIDE SLIDE BLOCK                         |    |
| 4     | 145688000 | 1  | 针柱导向槽                           | NEEDLE BAR GUIDE                                     |    |
| 5     | 062670612 | 2  | 螺丝, 平头 SM3. 57-40x6             | SCREW, PAN SM3.57-40X6                               |    |
| 6     | 113605051 | 1  | 针杆                              | NEEDLE BAR   |    |
| 7     | S18874001 | 1  | 针杆套, U                          | NEEDLE BAR BUSH, U                                   |    |
| 8     | 111024101 | 1  | 针杆套, D                          | NEEDLE BAR BUSH, D                                   |    |
| 10    | 014771022 | 2  | 固定螺丝, 孔(CP) SM6. 35             | SET SCREW, SOCKET (CP) SM6.35                        |    |
| 13    | 111863001 | 1  | 针杆海绵塞                           | NEEDLE BAR CORK                                      |    |
| 14    | 140890009 | 1  | 油塞                              | OIL CAP  |    |
| 15    | 151927001 | 1  | 海绵塞                             | CLUTCH FELT  |    |
| 16    | 109993001 | 1  | 油线                              | WICK NIPPER  |    |
| ----- |           |    |                                 |  |    |
| 9-1   | S40271051 | 1  | (适用于927薄料和中厚料“1/8, 5/32, 3/16”) | <For 927 Thin & Medium materials “1/8, 5/32, 3/16” > |    |
| 11-1  | 100251001 | 3  | 挑线杆曲柄, M                        | THREAD TAKE-UP CRANK, M                              |    |
|       |           |    | 固定螺丝, SM6. 35                   | SET SCREW, SM6.35                                    |    |
| 9-2   | S40272051 | 1  | 《适用于中厚料“1/4”》                   | <For 927 Medium materials “1/4” >                    |    |
| 11-1  | 100251001 | 3  | 挑线杆曲柄, MH                       | THREAD TAKE-UP CRANK, MH                             |    |
|       |           |    | 固定螺丝, SM6. 35                   | SET SCREW, SM6.35                                    |    |
| 9-3   | S40273051 | 1  | <适用于928>                        | <FOR 928>  |    |
| 11-2  | 100251001 | 1  | 挑线杆曲柄, H                        | THREAD TAKE-UP CRANK, H                              |    |
| 12    | 123006001 | 2  | 固定螺丝, SM6. 35                   | SET SCREW, SM6.35                                    |    |
|       |           |    | 固定螺丝, (CP) SM6. 35              | SET SCREW, (CP) SM6.35                               |    |

### D1.压脚杆装置(927)/Presser bar mechanism(927)

| 参考号   | 代码        | 数量 | 零件名称                 | NAME OF PARTS                  | RM |
|-------|-----------|----|----------------------|--------------------------------|----|
| 2     | S40299001 | 1  | 调节螺丝                 | ADJUST SCREW                   |    |
| 4     | S40798050 | 1  | 压脚杆夹                 | PRESSER BAR CLAMP              |    |
| 5     | 014760622 | 1  | 固定螺丝, 孔SM5. 95       | SET SCREW, SOCKET SM5.95       |    |
| 6     | S40298051 | 1  | 弹簧                   | SPRING                         |    |
| 7     | 105103001 | 1  | 抬压脚连接块               | PRESSER BAR LIFTER             |    |
| 8     | 105104001 | 1  | 连接块, SM5. 95         | SHOULDER SCREW, SM5.95         |    |
| 9     | 105105009 | 1  | 抬压脚杆                 | KNEE LIFTER LEVER              |    |
| 10    | 102921002 | 1  | 固定螺丝, SM5. 95        | SHOULDER SCREW, SM7.94         |    |
| 11    | 105106001 | 1  | 螺旋弹簧                 | TWIST SPRING                   |    |
| 12    | 105333001 | 1  | 抬压脚链条                | PRESSER FOOT LIFTER CHAIN ASSY |    |
| 14    | S40301001 | 1  | 端面防油垫                | PACKING                        |    |
| 16    | S40279001 | 1  | 前盖                   | FRONT LID                      |    |
| 17    | 062680512 | 2  | 螺丝, 平头 SM4. 37-40x5  | SCREW, PAN SM4.37-40X5         |    |
| 19    | 117934009 | 1  | 油塞, 13. 5            | RUBBER CAP, 13.5               |    |
| 20    | 159150009 | 1  | 油塞, 20. 5            | RUBBER CAP, 20.5               |    |
| 21    | 159150009 | 1  | 油塞, 20. 5            | RUBBER CAP, 20.5               |    |
| ----- |           |    |                      |                                |    |
| 1-1   | S06259001 | 1  | <标准型>                | <FOR STANDARD>                 |    |
| 3-1   | 111025001 | 1  | 压脚杆                  | PRESSER BAR                    |    |
| 13    | S40300001 | 1  | 压脚杆衬套, D             | PRESSER BAR BUSH, D            |    |
| 15    | 062681012 | 3  | 端面盖                  | FACE PLATE                     |    |
|       |           |    | 螺丝, 平头 SM4. 37-40x10 | SCREW, PAN SM4.37-40X10        |    |
|       |           |    | <适用于927, 928 >       | <FOR “-7, -8” >                |    |
| 1-2   | S06261001 | 1  | 压脚杆                  | PRESSER BAR                    |    |
| 3-2   | 150665001 | 1  | 压脚杆衬套, D             | PRESSER BAR BUSH, D            |    |

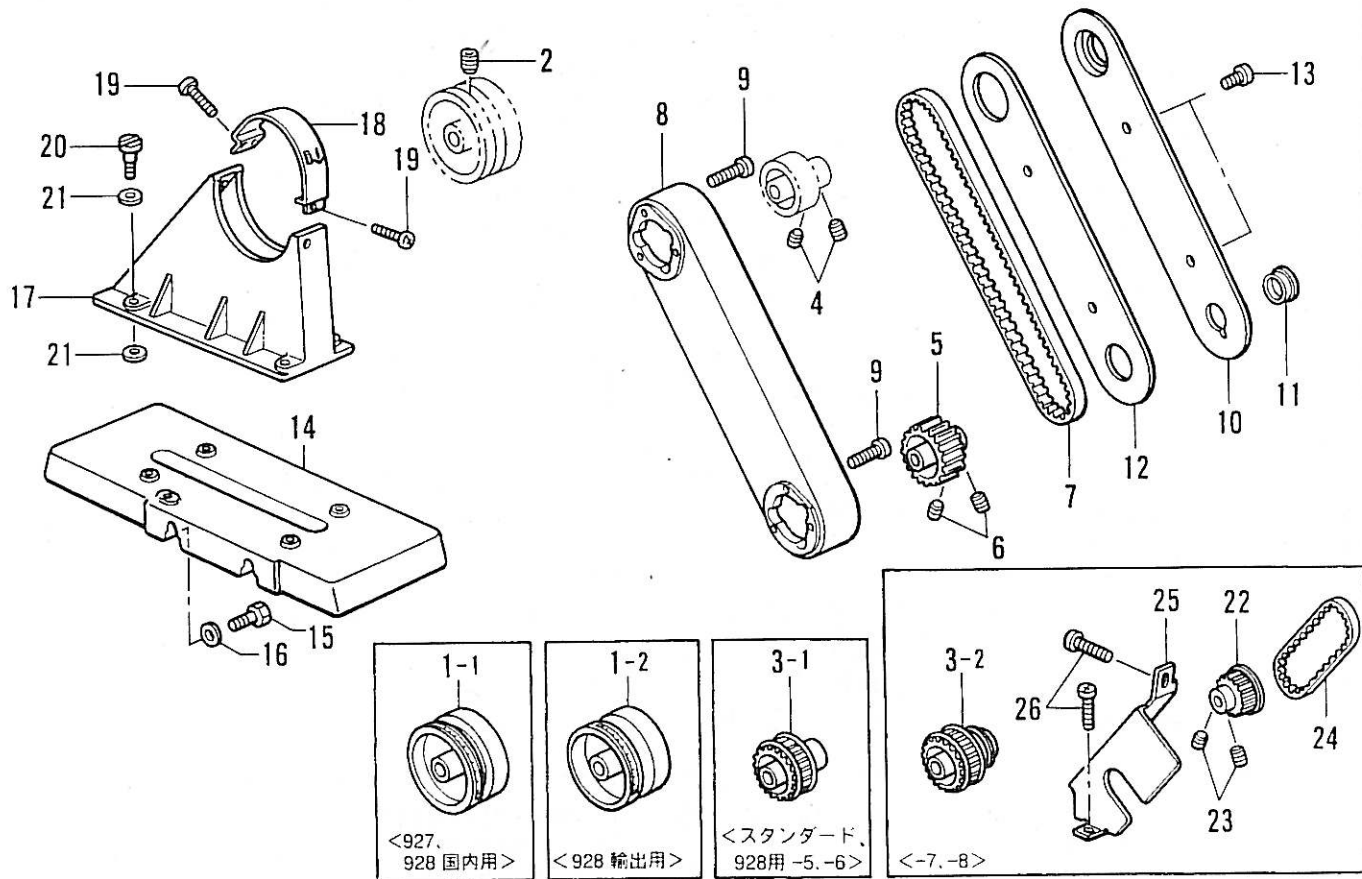
压脚杆装置(928)/Presser bar mechanism(928)



压脚杆装置(928)/Presser bar mechanism(928)

| 参考号 | 代码        | 数量 | 零件名称                     | NAME OF PARTS                          | RM |
|-----|-----------|----|--------------------------|--|----|
| 2   | 105091001 | 1  | 压脚杆衬套, U                 | PRESSER BAR BUSH, U                    |    |
| 4   | S40798050 | 1  | 压脚杆夹                     | PRESSER BAR CLAMP                      |    |
| 5   | 014760622 | 1  | 固定螺丝, 孔SM5.95            | SET SCREW, SOCKET SM5.95               |    |
| 6   | 105094009 | 1  | 压板弹簧                     | PRESSER PLATE SPRING                   |    |
| 7   | 105095001 | 1  | 挡销                       | PIN                                    |    |
| 8   | 105096009 | 1  | 压板弹簧配件                   | PLATE SPRING ASSY                      |    |
| 9   | 105100001 | 1  | 垫圈                       | WASHER                                 |    |
| 10  | 148006001 | 1  | 调节螺丝                     | ADJUST SCREW                           |    |
| 11  | 021710212 | 1  | 螺母, 2 SM4.76             | NUT, 2 SM4.76                          |    |
| 12  | 148007051 | 1  | 调节螺母, SM4.76             | WING NUT, SM4.76                       |    |
| 13  | 105103001 | 1  | 抬压脚连接块                   | PRESSER BAR LIFTER                     |    |
| 14  | 105104001 | 1  | 连接块螺丝, SM5.95            | SHOULDER SCREW, SM5.95                 |    |
| 15  | 105105009 | 1  | 抬压脚杆                     | KNEE LIFTER LEVER                      |    |
| 16  | 102921002 | 1  | 抬压脚杆螺丝, SM7.94           | SHOULDER SCREW, SM7.94                 |    |
| 17  | 105106001 | 1  | 螺旋弹簧                     | TWIST SPRING                           |    |
| 18  | 105333001 | 1  | 抬压脚链条                    | PRESSER FOOT LIFTER CHAIN ASSY         |    |
| 20  | S40301001 | 1  | 端面防油垫                    | PACKING                                |    |
| 22  | S40279001 | 1  | 前盖                       | FRONT LID                              |    |
| 23  | 062680512 | 2  | 螺丝, 平头 SM4.37-40x5       | SCREW, PAN SM4.37-40X5                 |    |
| 25  | 117934009 | 1  | 油塞, 13.5                 | RUBBER CAP, 13.5                       |    |
| 26  | 159150009 | 1  | 油塞, 20.5                 | RUBBER CAP, 20.5                       |    |
| 27  | 071063550 | 1  | 钢珠, 1/4                  | BEARING BALL, 1/4                      |    |
| 28  | 159150009 | 1  | 油塞, 20.5                 | RUBBER CAP, 20.5                       |    |
| 1-3 | S06260001 | 1  | <适用于标准型, -5 & -6><br>压脚杆 | <FOR STANDARD, -5 & -6><br>PRESSER BAR |    |
| 3-2 | 147865001 | 1  | 压脚杆衬套, D                 | PRESSER BAR BUSH, D                    |    |
| 19  | S40300001 | 1  | 端面盖                      | FACE PLATE                             |    |
| 21  | 062681012 | 3  | 螺丝, 平头 SM4.37-40x10      | SCREW, PAN SM4.37-40X10                |    |
| 1-2 | S06261001 | 1  | <适用于“-7, -8”><br>压脚杆     | <FOR “-7, -8”><br>PRESSER BAR          |    |
| 3-3 | 150665001 | 1  | 压脚杆衬套, D                 | PRESSER BAR BUSH, D                    |    |
| 1-1 | S06259001 | 1  | “可供选择的零件”<br>压脚杆         | “OPTION PARTS”<br>PRESSER BAR          |    |
| 3-1 | 111025001 | 1  | 压脚杆衬套, D                 | PRESSER BAR BUSH, D                    |    |

滑轮装置/Pulley mechanism

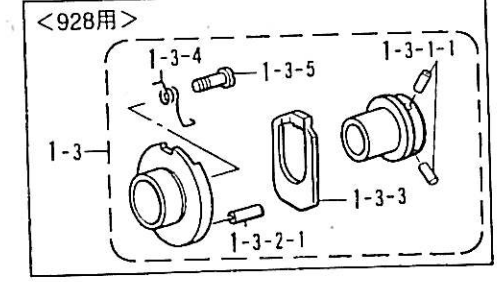
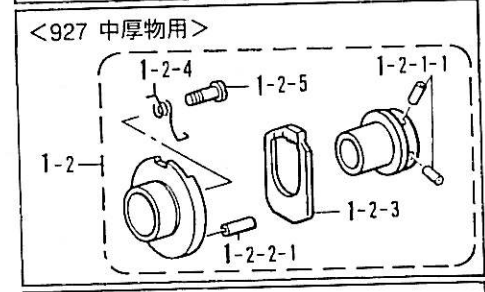
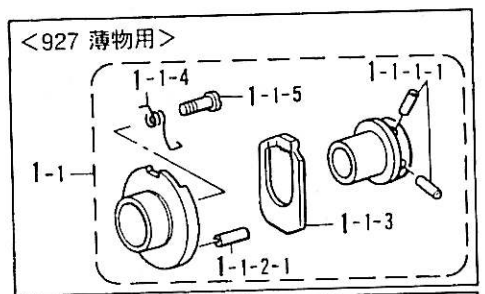
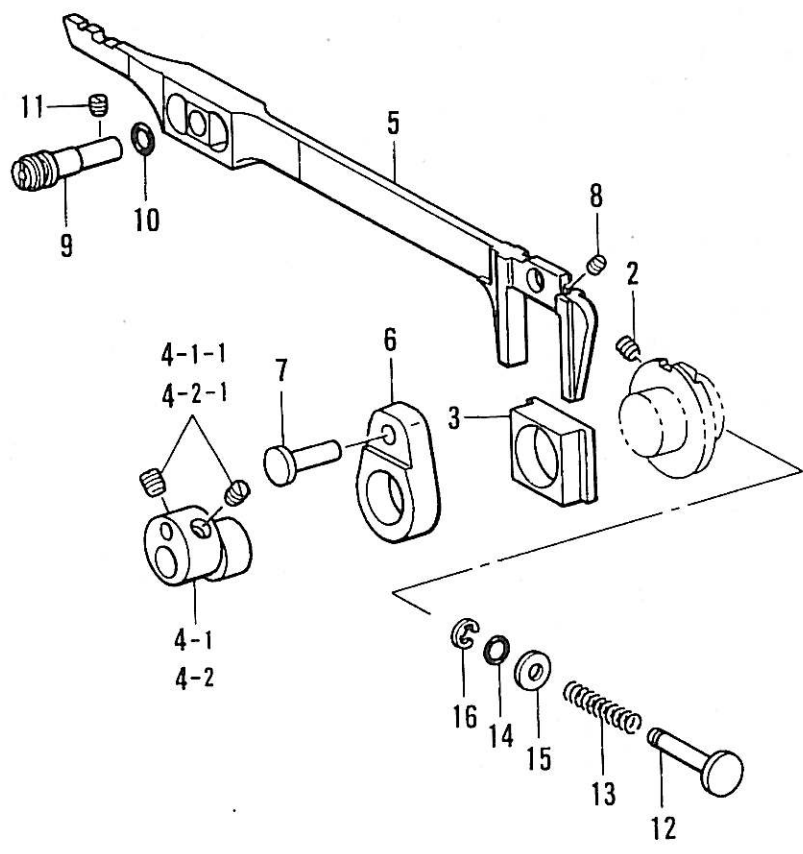


滑轮装置/Pulley mechanism

| 参考号 | 代码        | 数量 | 零件名称   | NAME OF PARTS   | RM |
|-----|-----------|----|--|---|----|
| 2   | 014781032 | 2  | 固定螺丝, 孔(CP) SM6.35                                     | SET SCREW, SOCKET (CP) SM6.35   |    |
| 4   | 014770622 | 2  | 固定螺丝, 孔(CP) SM6.35                                     | SET SCREW, SOCKET (CP) SM6.35   |    |
| 5   | S40818001 | 1  | 同步齿轮, 下部   | TIMING BELT WHEEL ASSY, LOWER   |    |
| 6   | 014770622 | 2  | 固定螺丝, 孔(CP) SM6.35                                     | SET SCREW, SOCKET (CP) SM6.35   |    |
| 7   | S40819000 | 1  | 同步带  | TIMING BELT   |    |
| 8   | S40258001 | 1  | 同步皮带盖  | BELT COVER  |    |
| 9   | 062711612 | 6  | 固定螺丝, 平头 SM4.76-32x16                                  | SCREW, PAN SM4.76-32X16   |    |
| 10  | S40259001 | 1  | 皮带盖板   | BELT COVER PLATE  |    |
| 11  | 116577051 | 1  | 旋转钩轴盖  | ROTARY HOOK SHAFT COVER   |    |
| 12  | 105141001 | 1  | 防油垫  | PACKING   |    |
| 13  | 062710812 | 2  | 螺丝, 平头 SM4.76-32x8                                     | SCREW, PAN SM4.76-32X8  |    |
| 14  | S40796001 | 1  | 滑轮基座   | PULLEY COVER BASE   |    |
| 15  | 105144001 | 2  | 螺钉, SM11.11  | BOLT, SM11.11   |    |
| 16  | 142627001 | 2  | 垫片   | WASHER  |    |
| 17  | S40261001 | 1  | 滑轮盖, A   | PULLEY COVER, A   |    |
| 18  | S40262001 | 1  | 滑轮盖, B   | PULLEY COVER, B   |    |
| 19  | 062680712 | 3  | 螺丝, 平头 SM4.37-40x7                                     | SCREW, PAN SM4.37-40X7  |    |
| 20  | 155558001 | 4  | 滑轮盖固定螺丝  | STUD SCREW, SM6.35  |    |
| 21  | S40797000 | 8  | 垫片   | PULLEY COVER SHEET  |    |
| 3-1 | S40265001 | 1  | < 适用于标准, 928-5 & -6 ><br>调节带轮配件, 上部<br>< 对于 "-7, -8" > | < FOR STANDARD, 928-5 & -6 ><br>TIMING BELT WHEEL ASSY, UPPER<br>< FOR "-7, -8" > |    |
| 3-2 | S41312001 | 1  | 调节带轮配件, U  | PULLER TIMING BELT WH. ASSY, U  |    |
| 22  | 150659001 | 1  | 调节滑轮配件, B  | TIMING PULLEY ASSY, B   |    |
| 23  | 014760622 | 2  | 固定螺丝, 孔SM5.95  | SET SCREW, SOCKET SM5.95  |    |
| 24  | 150661001 | 1  | 滑轮调节带, A   | PULLER TIMING BELT, A   |    |
| 25  | S40264001 | 1  | 滑轮带盖   | PULLEY BELT COVER   |    |
| 26  | 062680812 | 2  | 螺丝, 平的 SM4.37-40x8                                     | SCREW, PAN SM4.37-40X8  |    |



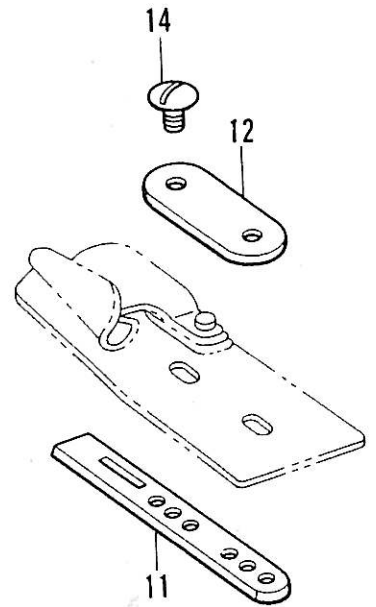
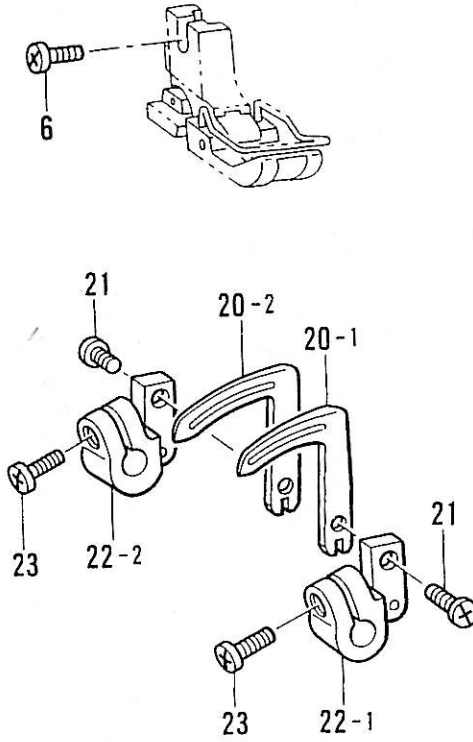
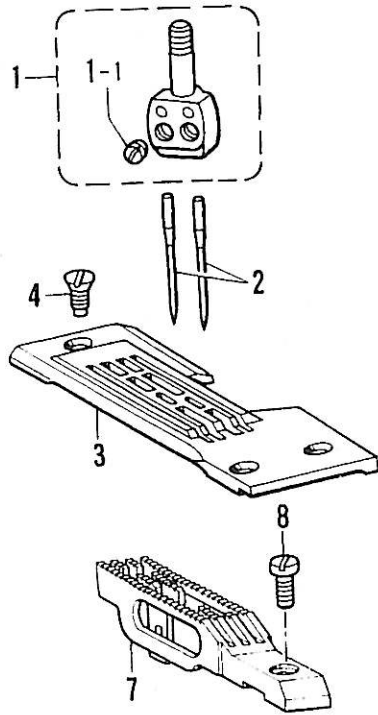
# 送料装置 / Feed mechanism



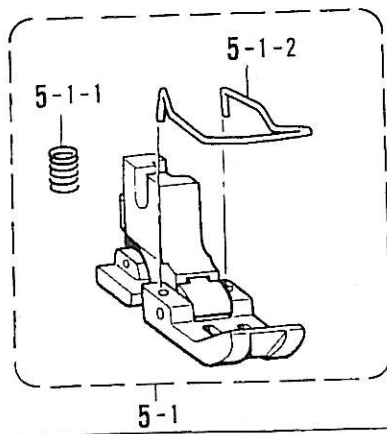
送料装置 / Feed mechanism

| 参考号     | 代码        | 数量 | 零件名称                      | NAME OF PARTS   | RM |
|---------|-----------|----|---------------------------|---|----|
| 1-1     | S40274001 | 1  | <适用于927“薄料”><br>偏心轮配件, M  | <FOR 927 "THIN MATERIALS"><br>ECCENTRIC WHEEL ASSY, M   |    |
| 1-1-1-1 | 047301242 | 2  | 弹簧销 AW3                   | PIN, SPRING AW3   |    |
| 1-1-2-1 | 047301242 | 1  | 弹簧销 AW3                   | PIN, SPRING AW3   |    |
| 1-1-3   | S38309001 | 1  | 线迹长度调节器                   | RACHTER STOPPER   |    |
| 1-1-4   | S39585001 | 1  | 螺旋弹簧                      | TWIST SPRING  |    |
| 1-1-5   | S39586001 | 1  | 螺丝, SM 1/8                | SCREW, M3   |    |
| 1-2     | S40274002 | 1  | <适用于927“中厚料”><br>偏心轮配件, M | <FOR 927 "MEDIUM MATERIALS"><br>ECCENTRIC WHEEL ASSY, M |    |
| 1-2-1-1 | 047301242 | 2  | 弹簧销 AW3                   | PIN, SPRING AW3   |    |
| 1-2-2-1 | 047301242 | 1  | 弹簧销 AW3                   | PIN, SPRING AW3   |    |
| 1-2-3   | S38309001 | 1  | 线迹长度调节器                   | RACHTER STOPPER   |    |
| 1-2-4   | S39585001 | 1  | 螺旋弹簧                      | TWIST SPRING  |    |
| 1-2-5   | S39586001 | 1  | 螺丝, SM 1/8                | SCREW, M3   |    |
| 1-3     | S40291001 | 1  | <适用于928><br>偏心轮配件, H      | <FOR 928><br>ECCENTRIC WHEEL ASSY, H                    |    |
| 1-3-1-1 | 047301242 | 2  | 弹簧销 AW3                   | PIN, SPRING AW3   |    |
| 1-3-2-1 | 047301242 | 1  | 弹簧销 AW3                   | PIN, SPRING AW3   |    |
| 1-3-3   | S38309001 | 1  | 线迹长度调节器                   | RACHTER STOPPER   |    |
| 1-3-4   | S39585001 | 1  | 螺旋弹簧                      | TWIST SPRING  |    |
| 1-3-5   | S39586001 | 1  | 螺丝, SM 1/8                | SCREW, M3   |    |
| 4-1     | 183949001 | 1  | <适用于927><br>偏心轮, M        | <FOR 927><br>ECCENTRIC WHEEL WITH SCREW, M              |    |
| 4-1-1   | 014770622 | 2  | 固定螺丝, 孔(CP) SM6.35        | SET SCREW, SOCKET (CP) SM6.35                           |    |
| 4-2     | 183950001 | 1  | <适用于928><br>偏心轮, H        | <FOR 928><br>ECCENTRIC WHEEL WITH SCREW, H              |    |
| 4-2-1   | 014770622 | 2  | 固定螺丝, 孔(CP) SM6.35        | SET SCREW, SOCKET (CP) SM6.35                           |    |
| 2       | 012060632 | 2  | 固定螺丝, 孔(FT) M6x6          | SET SCREW, SOCKET (FT) M6X6                             |    |
| 3       | S40282000 | 1  | 送料杆滑块                     | ECCENTRIC WHEEL SLEEVE                                  |    |
| 5       | S40285001 | 1  | 送料杆                       | FEED BAR SLIDE BLOCK ASSY                               |    |
| 6       | S40288000 | 1  | 偏心轮连接块                    | FEED LIFTING CONNECTING SHAFT                           |    |
| 7       | S40289051 | 1  | 连接块销子                     | FEED LIFTING ROCK SHAFT                                 |    |
| 8       | 014760622 | 1  | 固定螺丝, 孔 SM5.95            | SET SCREW, SOCKET SM5.95                                |    |
| 9       | S41311051 | 1  | 送料杆偏心销                    | FEED BAR ECCENTRIC SHAFT                                |    |
| 10      | 081006070 | 1  | 密封圈, P6                   | O RING, P6  |    |
| 11      | 014761030 | 1  | 固定螺丝, 孔(CP) SM5.95        | SET SCREW, SOCKET (CP) SM5.95                           |    |
| 12      | S40290051 | 1  | 调节按钮                      | PUSH BUTTON   |    |
| 13      | S40800001 | 1  | 弹簧                        | SPRING  |    |
| 14      | 081005070 | 1  | 密封圈, P5                   | O RING, P5  |    |
| 15      | 025710132 | 1  | 垫片, S 4.76                | WASHER, PLAIN S 4.76                                    |    |
| 16      | 048040342 | 1  | 卡簧, E4                    | RETAINING RING, E4                                      |    |

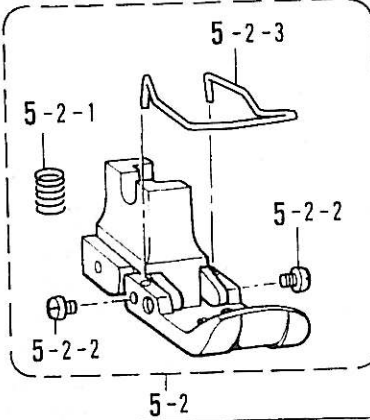
规格零件 (927标准型) / Gauge parts (927 Stand)



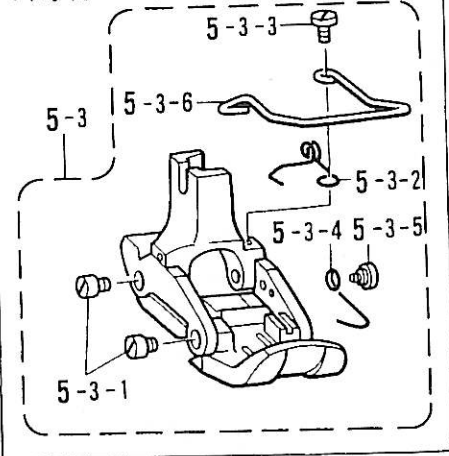
<中厚物 3/16 固定針受用>



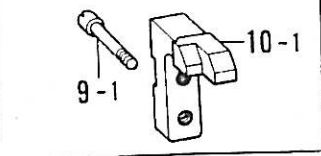
<中厚物 1/4用>



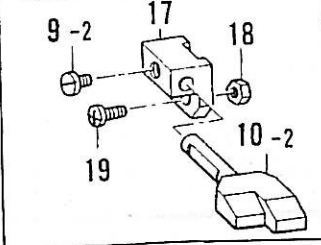
<中厚物 3/16 固定針受用、1/4用 以外>



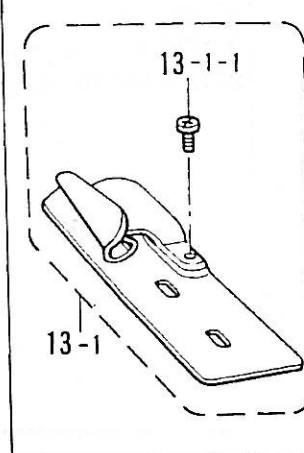
<固定針受用>



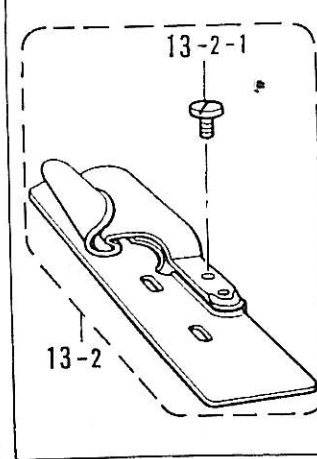
<移動針受用>



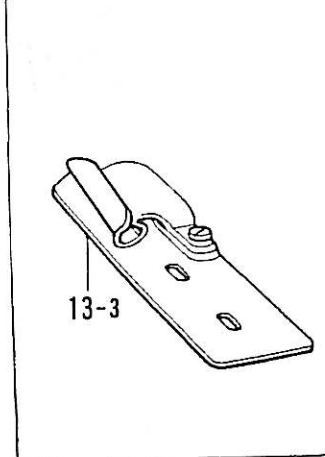
<1/8, 5/32用>



<3/16, 1/4MH用>



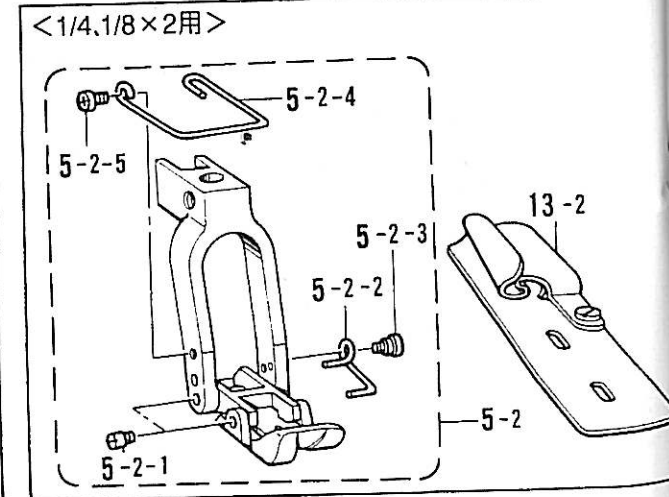
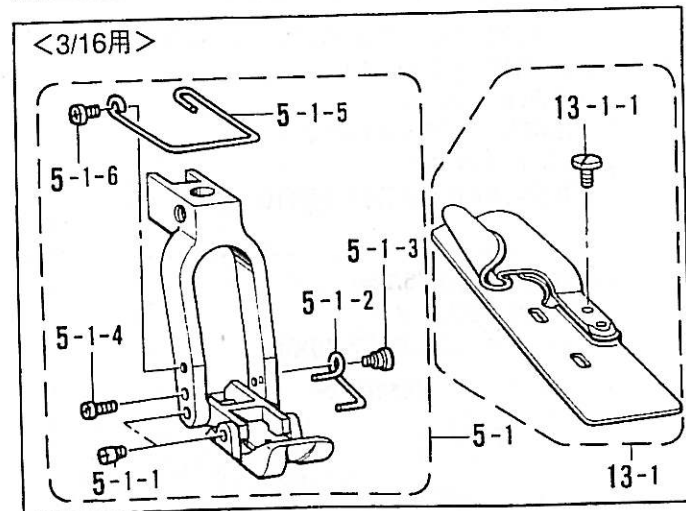
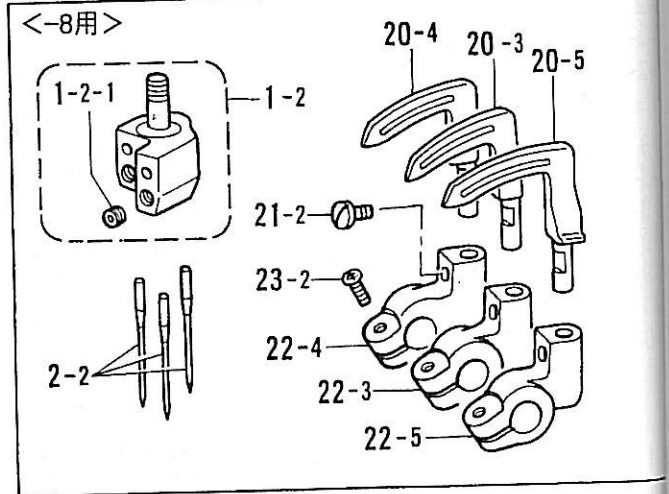
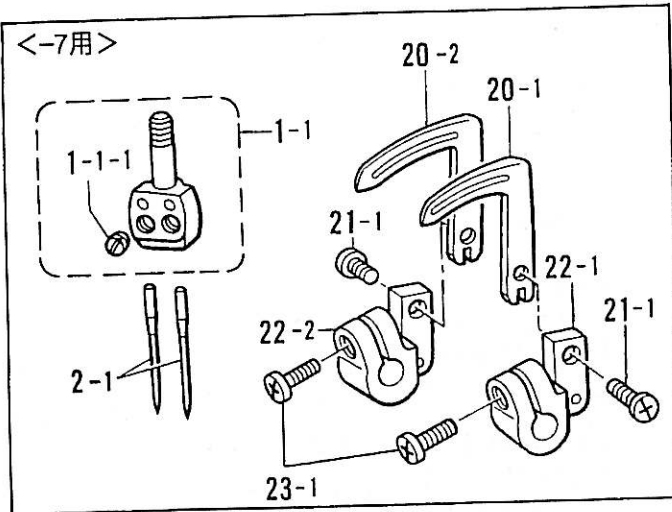
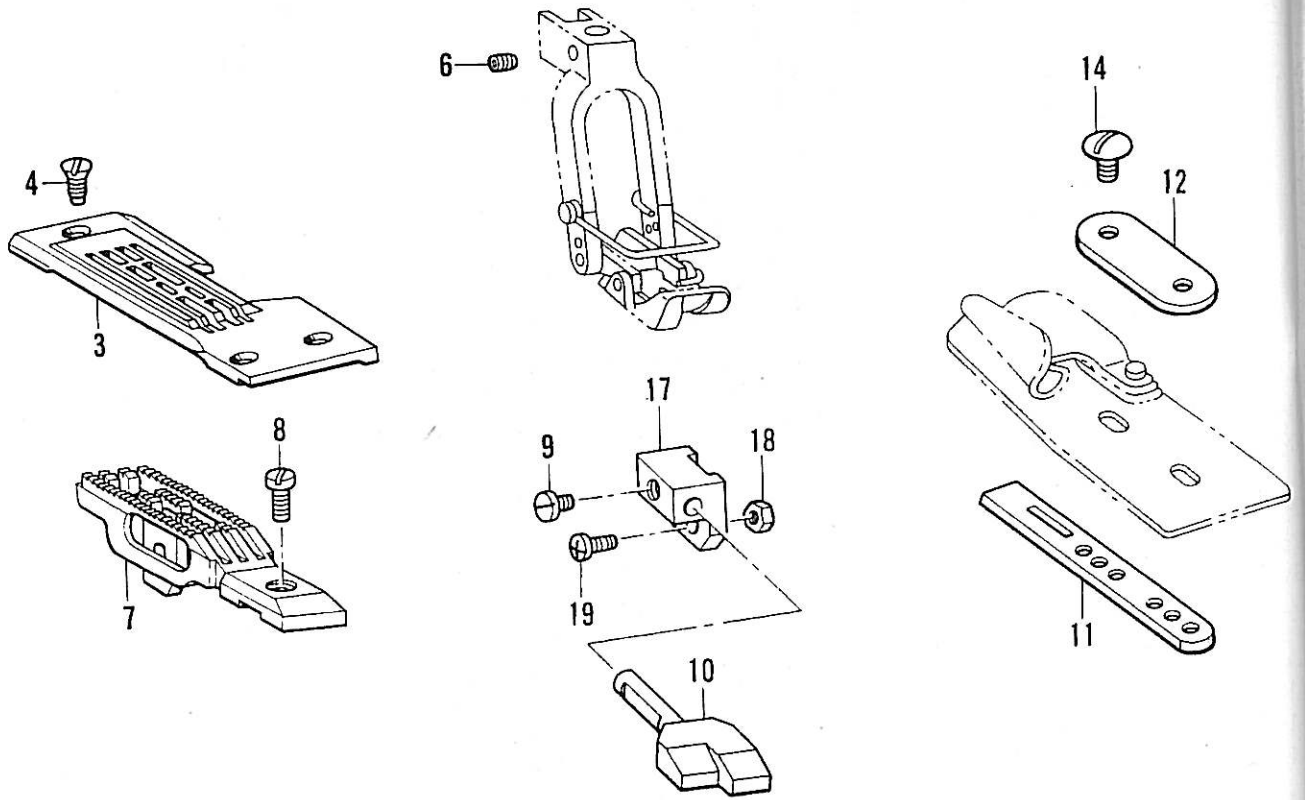
<1/4M用>



规格零件 (927标准型) / Gauge parts (927 Stand)

| 参考号    | 代码        | 数量 | 零件名称                          | NAME OF PARTS  | RM |
|--------|-----------|----|-------------------------------|--|----|
| 1      | ※         | 1  | 针夹配件 W/S                      | NEEDLE CALMP ASSY W/S  |    |
| 1-1    | 103408002 | 2  | 固定螺丝, SM4. 37                 | SET SCREW, SM4.37  |    |
| 2      | ※         | 2  | 针                             | NEEDLE   |    |
| 3      | ※         | 1  | 针板                            | NEEDLE PLATE   |    |
| 4      | 100032004 | 3  | 螺丝, 平头 SM4. 37                | SCREW, FLAT SM4.37   |    |
| 6      | 060670812 | 1  | 螺丝, SM3. 57-40x8              | SCREW, BIND SM3.57-40X8  |    |
| 7      | ※         | 1  | 送布牙                           | FEED DOG   |    |
| 8      | 105173004 | 1  | 螺丝, SM4. 76                   | SCREW, SM4.76  |    |
| 11     | S40399001 | 1  | 卷边筒固定板                        | LAPPER GUIDE PLATE   |    |
| 12     | 105129001 | 1  | 卷边筒固定板垫圈                      | LAPPER GUIDE PLATE WASHER  |    |
| 14     | 105130001 | 2  | 螺丝, SM3. 57                   | SCREW, SM3.57  |    |
| 20-1   | ※         | 1  | 挑线叉, S                        | LOPPER, S  |    |
| 20-2   | ※         | 1  | 挑线叉, L                        | LOPPER, L  |    |
| 21     | 062680612 | 2  | 螺丝, 平头 SM4. 37-40x6           | SCREW, PAN SM4.37-40X6   |    |
| 22-1   | S06315001 | 1  | 弯针座, S                        | LOOPER HOLDER, S   |    |
| 22-2   | S06314001 | 1  | 弯针座, L                        | LOOPER HOLDER, L   |    |
| 23     | 062681012 | 2  | 螺丝, 平头 SM4. 37-40x10          | SCREW, PAN SM4.37-40X10  |    |
| 5-1    | 101491101 | 1  | 〈适用于中厚料3/16针位组〉<br>压脚配件, 3/16 | <For medium materials 3/16" Fix needle support"><br>PRESSER FOOT ASSY, 3/16" |    |
| 5-1-1  | 105118000 | 1  | 弹簧                            | SPRING   |    |
| 5-1-2  | 156792001 | 1  | 护指                            | FINGER GUARD   |    |
| 5-2    | 106160101 | 1  | 〈适用于中厚料1/4〉<br>压脚配件, 1/4      | <For medium materials 1/4"><br>PRESSER FOOT ASSY, 1/4"H                      |    |
| 5-2-1  | 105118000 | 1  | 弹簧                            | SPRING   |    |
| 5-2-2  | 111140001 | 2  | 护指                            | SCREW, SM2.38  |    |
| 5-2-3  | 156792001 | 1  | 螺丝, SM2. 38                   | FINGER GUARD   |    |
| 5-3    | ※         | 1  | 〈适于中厚料3/16, 1/4以外用〉<br>压脚配件   | <For without medium materials 3/16, 1/4"><br>PRESSER FOOT ASSY               |    |
| 5-3-1  | 147871001 | 4  | 螺钉                            | PIN  |    |
| 5-3-2  | S40358001 | 1  | 弹簧                            | SPRING   |    |
| 5-3-3  | 111105002 | 1  | 螺丝, SM2. 38                   | SCREW, SM2.38  |    |
| 5-3-4  | S40360001 | 1  | 弹簧                            | SPRING   |    |
| 5-3-5  | 147932001 | 1  | 侧翼螺丝, SM2. 38                 | SHOULDER SCREW, SM2.38   |    |
| 5-3-6  | S40374001 | 1  | 护指                            | FINGER GUARD   |    |
| 9-1    | 105303001 | 1  | 〈用于针位组〉<br>螺丝, SM3. 57        | <FOR FIXED NEEDLE GUARD><br>SCREW, SM3.57                                    |    |
| 10-1   | ※         | 1  | 挑线叉导向                         | LOOPER THREAD GUIDE ARM  |    |
| 9-2    | 111443003 | 1  | 〈用于移动针〉<br>固定螺丝, SM3. 57      | <FOR MOVEABLE NEEDLE GUARD><br>SET SCREW, SM3.57                             |    |
| 10-2   | ※         | 1  | 挡针板                           | NEEDLE GUARD   |    |
| 17     | 148876001 | 1  | 挡针板支架                         | NEEDLE GUARD BRACKET   |    |
| 18     | 021670102 | 1  | 螺母, 1 SM3. 57                 | NUT, 1 SM3.57  |    |
| 19     | 062671012 | 1  | 螺丝, 平头 SM3. 57-40x10          | SCREW, PAN SM3.57-40X10  |    |
| 13-1   | ※         | 1  | 〈适用于 "1/8, 5/32"〉<br>卷边筒配件    | <FOR "1/8, 5/32"><br>LAPPER ASSY   |    |
| 13-1-1 | 062670412 | 1  | 螺丝, 平头 SM3. 57-40x4           | SCREW, PAN SM3.57-40X4   |    |
| 13-2   | ※         | 1  | 〈适用于 "3/16, 1/4MH"〉<br>卷边筒配件  | <FOR "3/16, 1/4MH"><br>LAPPER ASSY   |    |
| 13-2-1 | 105130001 | 1  | 螺丝, SM3. 57                   | SCREW, SM3.57  |    |
| 13-3   | S09679001 | 1  | 〈适用于 "1/4M"〉<br>卷边筒配件, 1/4 M  | <FOR "1/4M"><br>LAPPER ASSY, 1/4" M  |    |

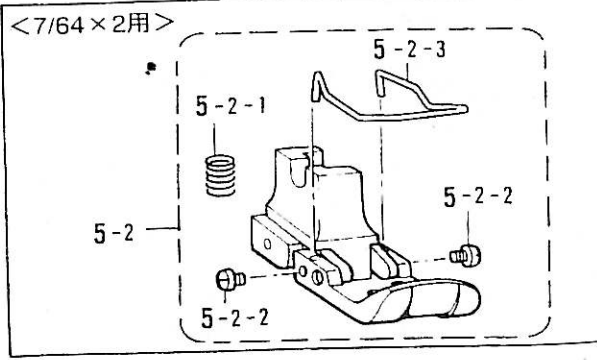
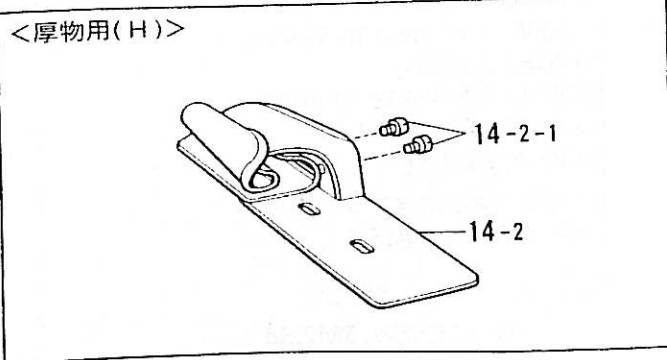
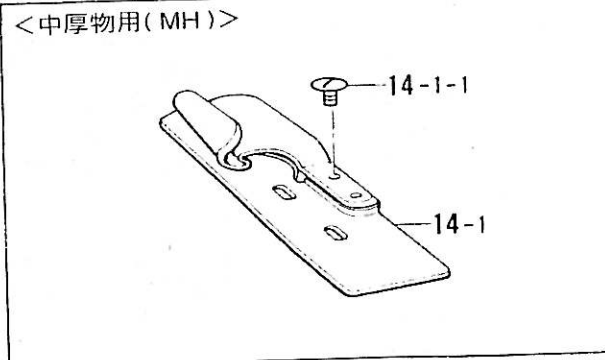
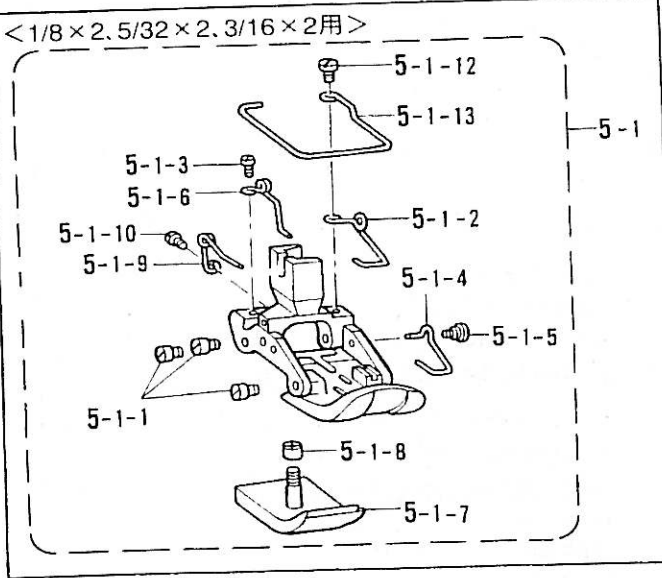
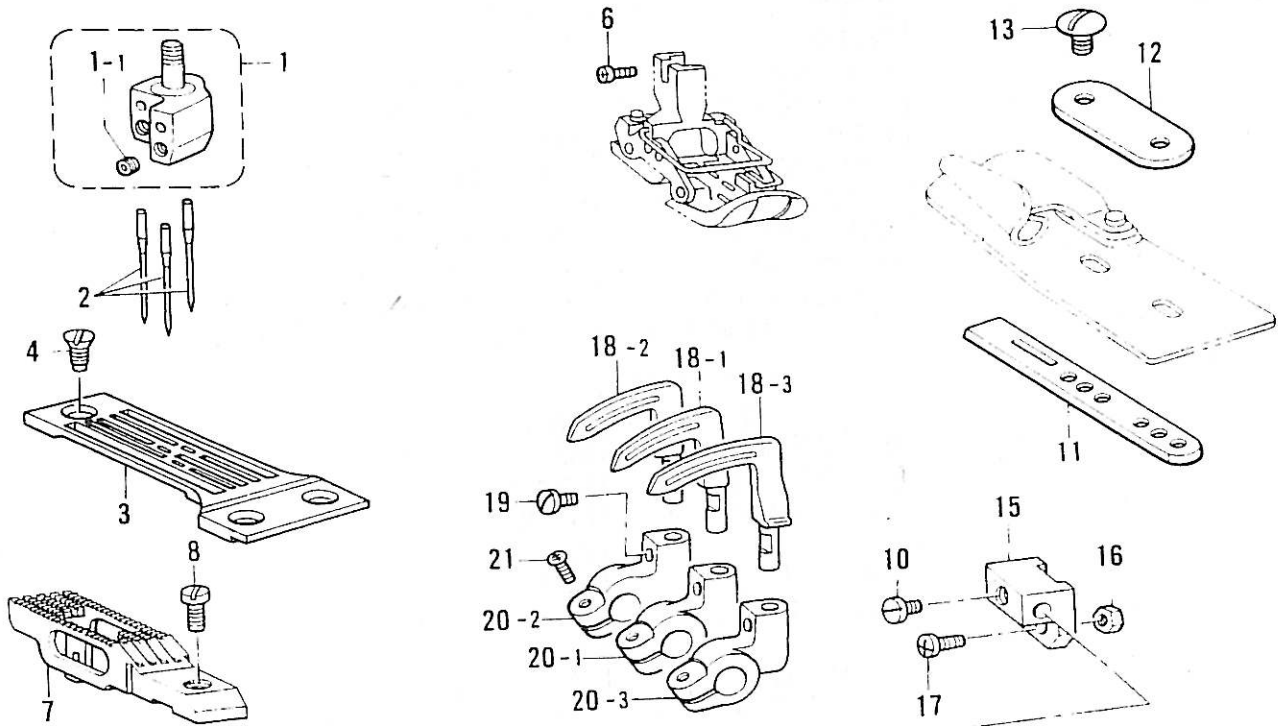
规格零件 (927) / Gauge parts (927)



规格零件 (927) / Gauge parts (927)

| 参考号    | 代码        | 数量 | 零件名称                         | NAME OF PARTS                             | RM |
|--------|-----------|----|------------------------------|---|----|
| 3      | ※         | 1  | 针板                           | NEEDLE PLATE                              |    |
| 4      | 100032004 | 3  | 螺丝, 平头 SM4. 37               | SCREW, FLAT SM4.37                        |    |
| 6      | 014760622 | 1  | 固定螺丝, 孔 SM5. 95              | SET SCREW, SOCKET SM5.95                  |    |
| 7      | ※         | 1  | 送布牙                          | FEED DOG                                  |    |
| 8      | 105173004 | 1  | 螺丝, SM4. 76                  | SCREW, SM4.76                             |    |
| 9      | 111443003 | 1  | 固定螺丝, SM3. 57                | SET SCREW, SM3.57                         |    |
| 10     | ※         | 1  | 导针板                          | NEEDLE GUARD                              |    |
| 11     | S40399001 | 1  | 卷边筒固定板                       | LAPPER GUIDE PLATE                        |    |
| 12     | 105129001 | 1  | 卷边筒固定板垫圈                     | LAPPER GUIDE PLATE WASHER                 |    |
| 14     | 105130001 | 2  | 螺丝, SM3. 57                  | SCREW, SM3.57                             |    |
| 17     | 148876001 | 1  | 导针板支架                        | NEEDLE GUARD BRACKET                      |    |
| 18     | 021670102 | 1  | 螺母, 1, SM3. 57               | NUT, 1 SM3.57                             |    |
| 19     | 062671012 | 1  | 螺丝, 平头 SM3. 57-40x10         | SCREW, PAN SM3.57-40X10                   |    |
| <hr/>  |           |    |                              |   |    |
| 1-1    | ※         | 1  | <适用于“-7”><br>针夹配件 W/S        | <FOR“-7”><br>NEEDLE CALMP ASSY W/S        |    |
| 1-1-1  | 103408002 | 2  | 固定螺丝, SM4. 37                | SET SCREW, SM4.37                         |    |
| 2-1    | ※         | 2  | 针, TVx64NY                   | NEEDLE, TVX64NY                           |    |
| 20-1   | ※         | 1  | 挑线叉, S                       | LOPPER, S                                 |    |
| 20-2   | ※         | 1  | 挑线叉, L                       | LOPPER, L                                 |    |
| 21-1   | 062680612 | 2  | 螺丝, 平的 SM4. 37-40x6          | SCREW, PAN SM4.37-40X6                    |    |
| 22-1   | S06315001 | 1  | 弯针座, S                       | LOOPER HOLDER, S                          |    |
| 22-2   | S06314001 | 1  | 弯针座, L                       | LOOPER HOLDER, L                          |    |
| 23-1   | 062681012 | 2  | 螺丝, 平头 SM4. 37-40x10         | SCREW, PAN SM4.37-40X10                   |    |
| 1-2    | ※         | 1  | <适用于“-8”><br>针夹配件 W/S        | <FOR“-8”><br>NEEDLE CLAMP ASSY W/S        |    |
| 1-2-1  | 146427001 | 3  | 固定螺丝, 孔(CP) SM3. 18          | SET SCREW, SOCKET (CP) SM3.18             |    |
| 2-2    | ※         | 3  | 针, TVx64NY                   | NEEDLE, TVX64NY                           |    |
| 20-3   | S40375001 | 1  | 挑线叉, S 1/8" x2-6             | LOPPER, S 1/8"X2-6                        |    |
| 20-4   | S40376001 | 1  | 挑线叉, M-6                     | LOPPER, M-6                               |    |
| 20-5   | S40377001 | 1  | 挑线叉, L 1/8" x2-6             | LOPPER, L 1/8"X2-6                        |    |
| 21-2   | 111443003 | 3  | 固定螺丝, SM3. 57                | SET SCREW, SM3.57                         |    |
| 22-3   | S40378051 | 1  | 弯针座, S                       | LOPPER HOLDER, S                          |    |
| 22-4   | S40379051 | 1  | 弯针座, M                       | LOPPER HOLDER, M                          |    |
| 22-5   | S40380051 | 1  | 弯针座, L                       | LOPPER HOLDER, L                          |    |
| 23-2   | 062671012 | 3  | 螺丝, 平头 SM3. 57-40x10         | SCREW, PAN SM3.57-40X10                   |    |
| <hr/>  |           |    |                              |   |    |
| 5-1    | S06303101 | 1  | <适用于“3/16”><br>压脚配件, 3/16“-7 | <FOR“3/16”><br>PRESSER FOOT ASSY, 3/16"-7 |    |
| 5-1-1  | 147871001 | 4  | 螺钉                           | PIN                                       |    |
| 5-1-2  | S06309001 | 1  | 弹簧                           | SPRING                                    |    |
| 5-1-3  | 147932001 | 1  | 螺丝, SM2. 38                  | SHOULDER SCREW, SM2.38                    |    |
| 5-1-4  | 062630612 | 1  | 螺丝, 平头 SM2. 38-56x6          | SCREW, PAN SM2.38-56X6                    |    |
| 5-1-5  | S09180101 | 1  | 护指                           | FINGER GUARD                              |    |
| 5-1-6  | 060660512 | 1  | 固定螺丝 SM3. 18-40x5            | SCREW, BIND SM3.18-40X5                   |    |
| 13-1   | 101494001 | 1  | 卷边筒配件, 3/16" M               | LAPPER ASSY, 3/16" M                      |    |
| 13-1-1 | 105130001 | 1  | 螺丝, SM3. 57                  | SCREW, SM3.57                             |    |
| 5-2    | ※         | 1  | <适用于“1/4, 1/8x2”><br>压脚配件    | <FOR“1/4, 1/8X2”><br>PRESSER FOOT ASSY    |    |
| 5-2-1  | 147871001 | 4  | 螺钉                           | PIN                                       |    |
| 5-2-2  | S06309001 | 1  | 弹簧                           | SPRING                                    |    |
| 5-2-3  | 147932001 | 1  | 螺丝, SM2. 38                  | SHOULDER SCREW, SM2.38                    |    |
| 5-2-4  | S09180101 | 1  | 护指                           | FINGER GUARD                              |    |
| 5-2-5  | 060660512 | 1  | 固定螺丝, SM3. 18-40x5           | SCREW, BIND SM3.18-40X5                   |    |
| 13-2   | S09679001 | 1  | 卷边筒配件, 1/4" M                | LAPPER ASSY, 1/4" M                       |    |

CM928 针位组 (928) / Gauge parts (928 Stand)

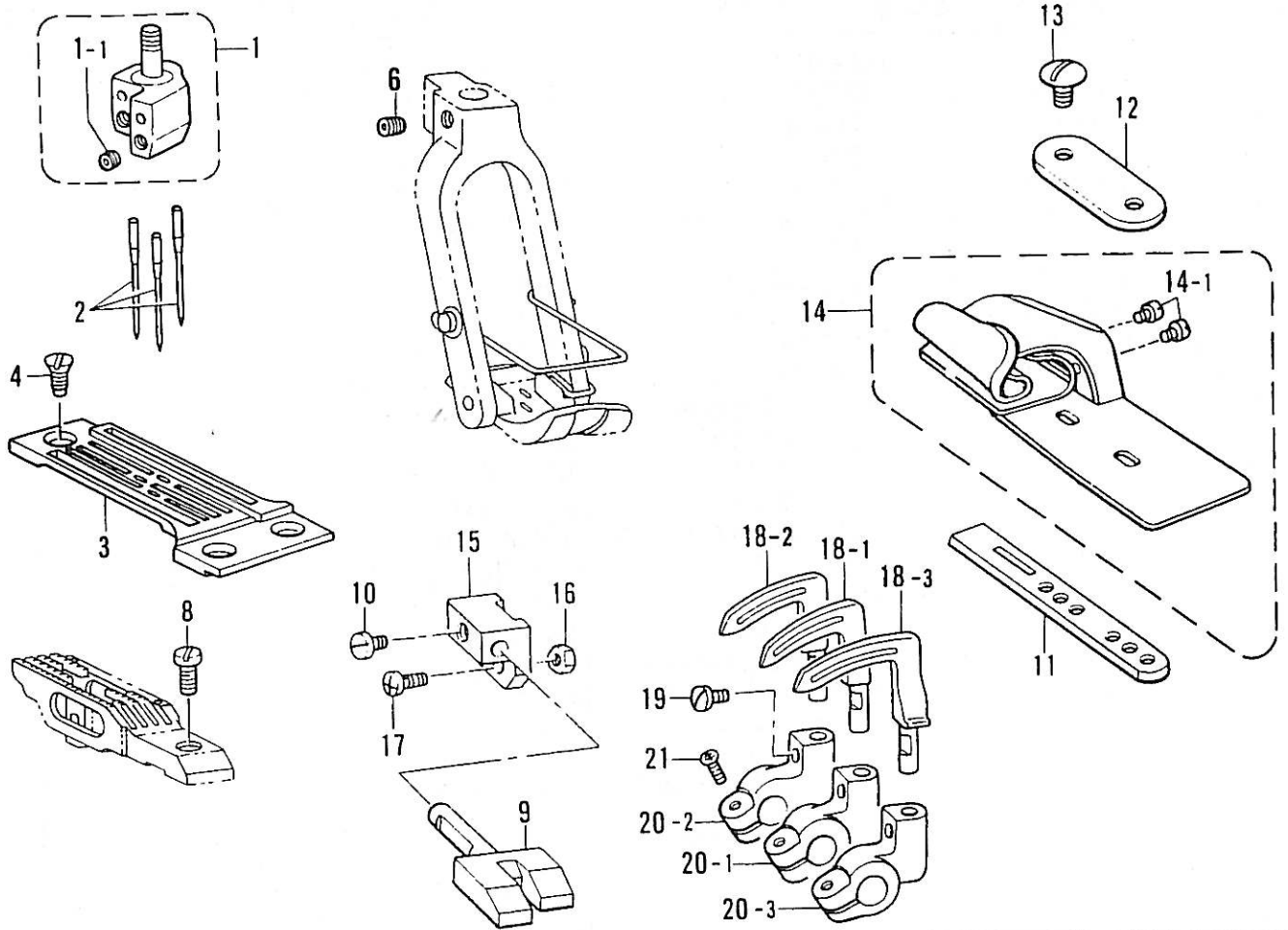


CM928 针位组 (928) /Gauge parts (928)

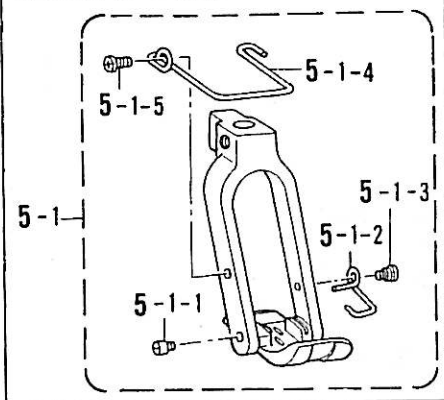
| 参考号    | 代码        | 数量 | 零件名称                | NAME OF PARTS                 | RM |
|--------|-----------|----|---------------------|-------------------------------|----|
| 1      | ※         | 1  | 针夹组件                | NEEDLE CLAMP ASSY             |    |
| 1-1    | 146427001 | 3  | 固定螺丝 SM3. 18        | SET SCREW, SOCKET (CP) SM3.18 |    |
| 2      | S43401021 | 3  | 针TVX5 (#21)         | NEEDLE, TVX5 (#21)            |    |
| 3      | ※         | 1  | 针板                  | NEEDLE PLATE                  |    |
| 4      | 100032004 | 3  | 螺丝 SM4. 37          | SCREW, FLAT SM4.37            |    |
| 6      | 060670812 | 1  | 螺丝 SM3. 57-40X8     | SCREW, BIND SM3.57-40X8       |    |
| 7      | ※         | 1  | 送布牙                 | FEED DOG                      |    |
| 8      | 105173004 | 1  | 螺丝 SM4. 76          | SCREW, SM4.76                 |    |
| 9      | 148875001 | 1  | 挡针板, -6             | NEEDLE GUARD, -6              |    |
| 10     | 111443003 | 1  | 螺丝 SM3. 57          | SET SCREW, SM3.57             |    |
| 11     | S40399001 | 1  | 卷边筒固定板              | LAPPER GUIDE PLATE            |    |
| 12     | 105129001 | 1  | 卷边筒固定板垫圈            | LAPPER GUIDE PLATE WASHER     |    |
| 13     | 105130001 | 2  | 螺丝 SM3. 57          | SCREW, SM3.57                 |    |
| 15     | 148876001 | 1  | 挡针板支架               | NEEDLE GUARD BRACKET          |    |
| 16     | 021670102 | 1  | 螺母 SM3. 57          | NUT, 1 SM3.57                 |    |
| 17     | 062671012 | 1  | 螺丝 SM3. 57-40X10    | SCREW, PAN SM3.57-40X10       |    |
| 18-1   | ※         | 1  | 挑线叉, S              | LOPPER, S                     |    |
| 18-2   | ※         | 1  | 挑线叉, M              | LOPPER, M                     |    |
| 18-3   | ※         | 1  | 挑线叉, L              | LOPPER, L                     |    |
| 19     | 111443003 | 3  | 固定螺丝, SM3. 57       | SET SCREW, SM3.57             |    |
| 20-1   | S40378051 | 1  | 弯针座, S              | LOPPER HOLDER, S              |    |
| 20-2   | S40379051 | 1  | 弯针座, M              | LOPPER HOLDER, M              |    |
| 20-3   | S40380051 | 1  | 弯针座, L              | LOPPER HOLDER, L              |    |
| 21     | 062671012 | 3  | 螺丝 SM3. 57-40X10    | SCREW, PAN SM3.57-40X10       |    |
| <hr/>  |           |    |                     |                               |    |
| 5-1    | ※         | 1  | 压脚                  | PRESSER FOOT ASSY             |    |
| 5-1-1  | 147871001 | 6  | 螺钉                  | PIN                           |    |
| 5-1-2  | 147872001 | 1  | 弹簧                  | SPRING                        |    |
| 5-1-3  | S01295001 | 1  | 螺丝 SM2. 38X3. 5     | SCREW, SM2.38X3.5             |    |
| 5-1-4  | 147890001 | 1  | 弹簧                  | SPRING                        |    |
| 5-1-5  | 147932001 | 1  | 螺丝 SM2. 38          | SHOULDER SCREW, SM2.38        |    |
| 5-1-6  | 147875001 | 1  | 弹簧                  | SPRING                        |    |
| 5-1-8  | 147877001 | 1  | 螺母 SM3. 18          | NUT, SM3.18                   |    |
| 5-1-9  | 147878001 | 1  | 弹簧                  | SPRING                        |    |
| 5-1-10 | 062660512 | 1  | 螺丝 PAN SM3. 18-40X5 | SCREW, PAN SM3.18-40X5        |    |
| 5-1-12 | 111105002 | 1  | 螺丝 SM2. 38          | SCREW, SM2.38                 |    |
| 5-1-13 | 151572101 | 1  | 护手装置                | FINGER GUARD                  |    |
| 5-1-7  | S40804001 | 1  | 压脚 BS5/16''         | PRESSER FOOT, BS 5/16"        |    |
| 5-1-7  | 147876001 | 1  | 压脚 BS               | PRESSER FOOT, BS              |    |
| 5-2    | S40788001 | 1  | 压脚组件 7/64'' X2      | PRESSER FOOT ASSY, 7/64" X2   |    |
| 5-2-1  | S09397001 | 1  | 弹簧                  | SPRING                        |    |
| 5-2-2  | 153787001 | 2  | 螺丝 SM2. 38          | SCREW, SM2.38                 |    |
| 5-2-3  | 151571001 | 1  | 护手装置                | FINGER GUARD                  |    |
| <hr/>  |           |    |                     |                               |    |
| 14-1   | ※         | 1  | 卷边筒组件 MH            | LAPPER ASSY, MH               |    |
| 14-1-1 | 105130001 | 1  | 螺丝 SM3. 57          | SCREW, SM3.57                 |    |
| 14-2   | ※         | 1  | 卷边筒组件 H             | LAPPER ASSY, H                |    |
| 14-2-1 | 122771001 | 2  | 螺丝 SM2. 38          | SCREW, SM2.38                 |    |



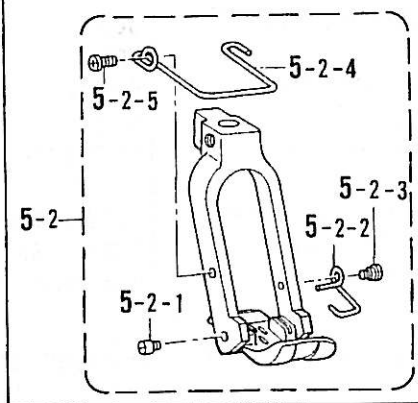
规格零件 (928) / Gauge parts(928)



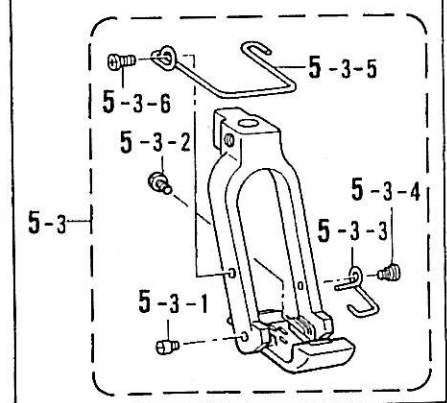
<デニム用 1/8×2 輸出(段差1.9)>



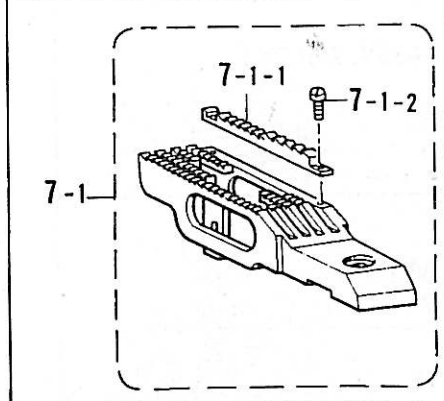
<デニム用 5/32×2.3/16×2>



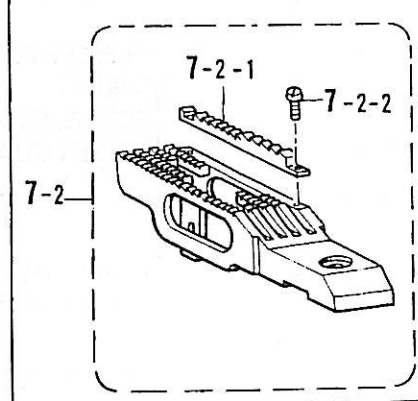
<厚物用 1/8×2, デニム用 1/8×2 (段差1.0)>



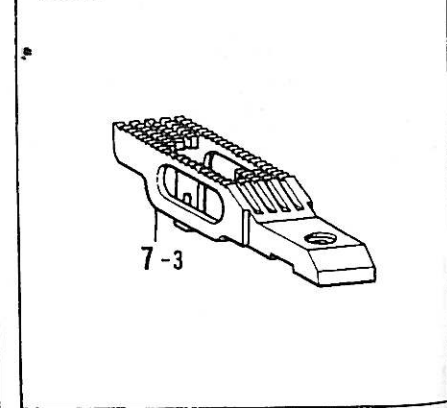
<デニム用 1/8×2 (段差1.9), 5/32×2.3/16×2>



<デニム用 1/8×2(段差1.0)>



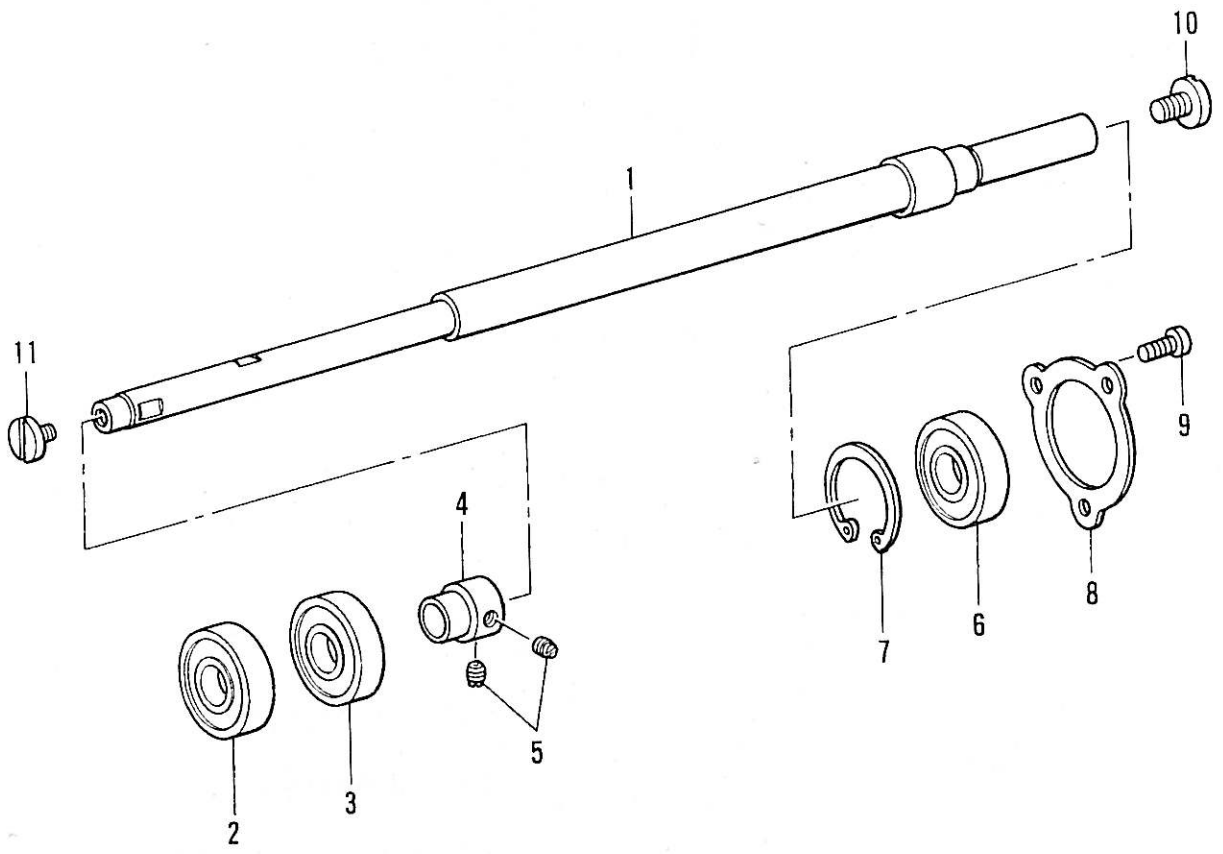
<厚物用>



规格零件 (928) /Gauge parts(928)

| 参考号   | 代码        | 数量 | 零件名称                 | NAME OF PARTS                  | RM |
|-------|-----------|----|----------------------|--------------------------------|----|
| 1     | ※         | 1  | 针夹组件                 | NEEDLE CLAMP ASSY              |    |
| 1-1   | 146427001 | 3  | 固定螺丝SM3. 18          | SET SCREW, SOCKET (CP) SM3.18  |    |
| 2     | ※         | 3  | 针TVX5                | NEEDLE, TVX5                   |    |
| 3     | ※         | 1  | 针板                   | NEEDLE PLATE                   |    |
| 4     | 100032004 | 3  | 螺丝SM4. 37            | SCREW, FLAT SM4.37             |    |
| 6     | 014760622 | 1  | 螺丝SOCKET SM5. 95     | SET SCREW, SOCKET SM5.95       |    |
| 8     | 105173004 | 1  | 螺丝SM4. 76            | SCREW, SM4.76                  |    |
| 9     | 148875001 | 1  | 挡针板, -6              | NEEDLE GUARD, -6               |    |
| 10    | 111443003 | 1  | 螺丝SM3. 57            | SET SCREW, SM3.57              |    |
| 11    | S40399001 | 1  | 卷边筒固定板               | LAPPER GUIDE PLATE             |    |
| 12    | 105129001 | 1  | 卷边筒固定板垫圈             | LAPPER GUIDE PLATE WASHER      |    |
| 13    | 105130001 | 2  | 螺丝SM3. 57            | SCREW, SM3.57                  |    |
| 14    | ※         | 1  | 卷边筒组件                | LAPPER ASSY                    |    |
| 14-1  | 122771001 | 2  | 螺母SM2. 38            | SCREW, SM2.38                  |    |
| 15    | 148876001 | 1  | 挡针板支架                | NEEDLE GUARD BRACKET           |    |
| 16    | 021670102 | 1  | 螺母 1 SM3. 57         | NUT, 1 SM3.57                  |    |
| 17    | 062671012 | 1  | 螺丝 SM3. 57-40X10     | SCREW, PAN SM3.57-40X10        |    |
| 18-1  | ※         | 1  | 挑线叉, S 1/8'' X2-6    | LOPPER, S 1/8"X2-6             |    |
| 18-2  | ※         | 1  | 挑线叉, M 1/8'' X2-6    | LOPPER, M 1/8"X2-6             |    |
| 18-3  | ※         | 1  | 挑线叉, L 1/8'' X2-6    | LOPPER, L 1/8"X2-6             |    |
| 19    | 111443003 | 3  | 固定螺丝, SM3. 57        | SET SCREW, SM3.57              |    |
| 20-1  | S40378051 | 1  | 弯针座, S               | LOPPER HOLDER, S               |    |
| 20-2  | S40379051 | 1  | 弯针座, M               | LOPPER HOLDER, M               |    |
| 20-3  | S40380051 | 1  | 弯针座, L               | LOPPER HOLDER, L               |    |
| 21    | 062671012 | 3  | 螺丝 PAN SM3. 57-40X10 | SCREW, PAN SM3.57-40X10        |    |
| 5-1   | 150672101 | 1  | 压脚组件 1/8'' X2-8      | PRESSER FOOT ASSY, 1/8"X2-8    |    |
| 5-1-1 | 150670001 | 2  | 螺钉                   | PIN                            |    |
| 5-1-2 | 150671001 | 1  | 弹簧                   | SPRING                         |    |
| 5-1-3 | 147932001 | 1  | 螺丝 SM2. 38           | SHOULDER SCREW, SM2.38         |    |
| 5-1-4 | 156211101 | 1  | 护手装置                 | FINGER GUARD                   |    |
| 5-1-5 | 060660512 | 1  | 螺丝 BIND SM3. 18-40X5 | SCREW, BIND SM3.18-40X5        |    |
| 5-2   | 151487101 | 1  | 压脚组件 1/8'' X2-8      | PRESSER FOOT ASSY, 5/32"X2-8   |    |
| 5-2-1 | 151481001 | 2  | 螺钉                   | PIN                            |    |
| 5-2-2 | 151482001 | 1  | 弹簧                   | SPRING                         |    |
| 5-2-3 | 147932001 | 1  | 螺丝 SM2. 38           | SHOULDER SCREW, SM2.38         |    |
| 5-2-4 | 156211101 | 1  | 护手装置                 | FINGER GUARD                   |    |
| 5-2-5 | 060660512 | 1  | 螺丝 BIND SM3. 18-40X5 | SCREW, BIND SM3.18-40X5        |    |
| 5-3   | ※         | 1  | 压脚组件 1/8'' X2-8      | PRESSER FOOT ASSY, FT 1/8"X2-8 |    |
| 5-3-1 | 150670001 | 2  | 螺钉                   | PIN                            |    |
| 5-3-2 | 142747002 | 1  | 弹簧                   | SET SCREW, SM4.76              |    |
| 5-3-3 | 150671001 | 1  | 螺丝 SM2. 38           | SPRING                         |    |
| 5-3-4 | 147932001 | 1  | 护手装置                 | SHOULDER SCREW, SM2.38         |    |
| 5-3-5 | 156211101 | 1  | 护手装置                 | FINGER GUARD                   |    |
| 5-3-6 | 060660512 | 1  | 螺丝 BIND SM3. 18-40X5 | SCREW, BIND SM3.18-40X5        |    |
| 7-1   | ※         | 1  | 送布牙组件                | FEED DOG ASSY, 1/4"-7          |    |
| 7-1-1 | 147307001 | 1  | 送布牙                  | SUB FEED DOG                   |    |
| 7-1-2 | 147880001 | 2  | 螺丝 SM1. 98           | SCREW, SM1.98                  |    |
| 7-2   | S01635101 | 1  | 送布牙组件                | FEED DOG ASSY, 1/8"X2-8        |    |
| 7-2-1 | S01637001 | 1  | 送布牙                  | SUB FEED DOG                   |    |
| 7-2-2 | 147880001 | 2  | 螺丝 SM1. 98           | SCREW, SM1.98                  |    |
| 7-3   | 156182101 | 1  | 送布牙 1/8'' X2-8       | FEED DOG, 1/8"X2-8             |    |

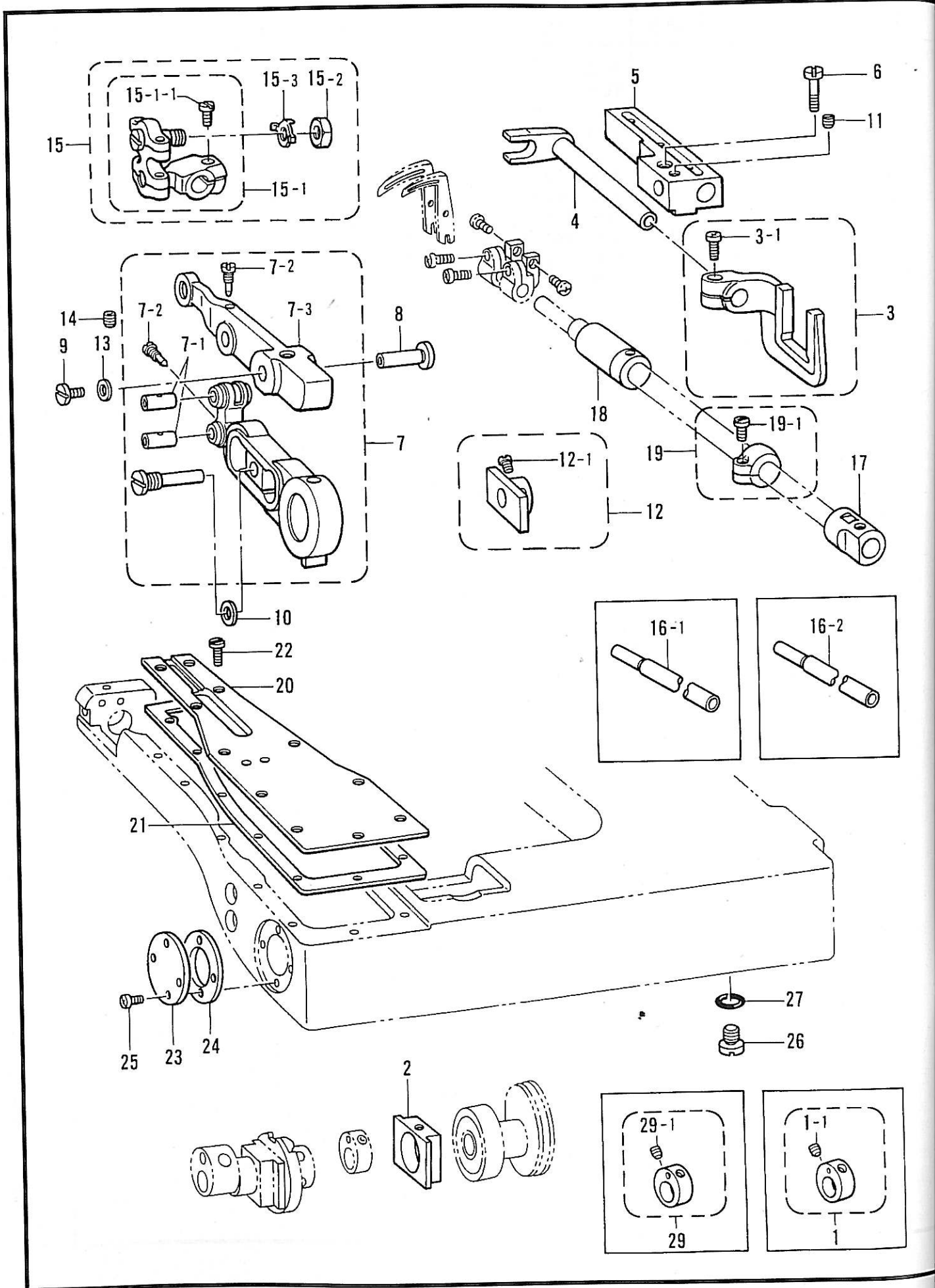
下轴装置/Lower shaft mechanism



下轴装置/Lower shaft mechanism

| 参考号 | 代码        | 数量 | 零件名称             | NAME OF PARTS           | RM |
|-----|-----------|----|------------------|-------------------------|----|
| 1   | 105147101 | 1  | 下主轴              | LOWER SHAFT             |    |
| 2   | 072620070 | 1  | 轴承, 6200Z        | BALL BEARING, 6200Z     |    |
| 3   | 072620180 | 1  | 轴承, 6200ZZ       | BALL BEARING, 6201ZZ    |    |
| 4   | 105150000 | 1  | 轴承套筒             | BALL BEARING BUSH       |    |
| 5   | 102716004 | 2  | 螺丝, SM4. 37      | SET SCREW, SM4.37       |    |
| 6   | 072630260 | 1  | 轴承 6302VV        | BALL BEARING, 6302VV    |    |
| 7   | 048420242 | 1  | 卡簧, C42          | RETAINING RING, C42     |    |
| 8   | S40316051 | 1  | 轴承固定片            | BEARING PRESSER         |    |
| 9   | 062711012 | 3  | 螺丝 SM4. 76-32X10 | SCREW, PAN SM4.76-32X10 |    |
| 10  | 105155001 | 1  | 螺丝 SM6. 35       | SCREW, SM6.35           |    |
| 11  | 105156002 | 1  | 螺丝 SM4. 37       | SCREW, SM4.37           |    |

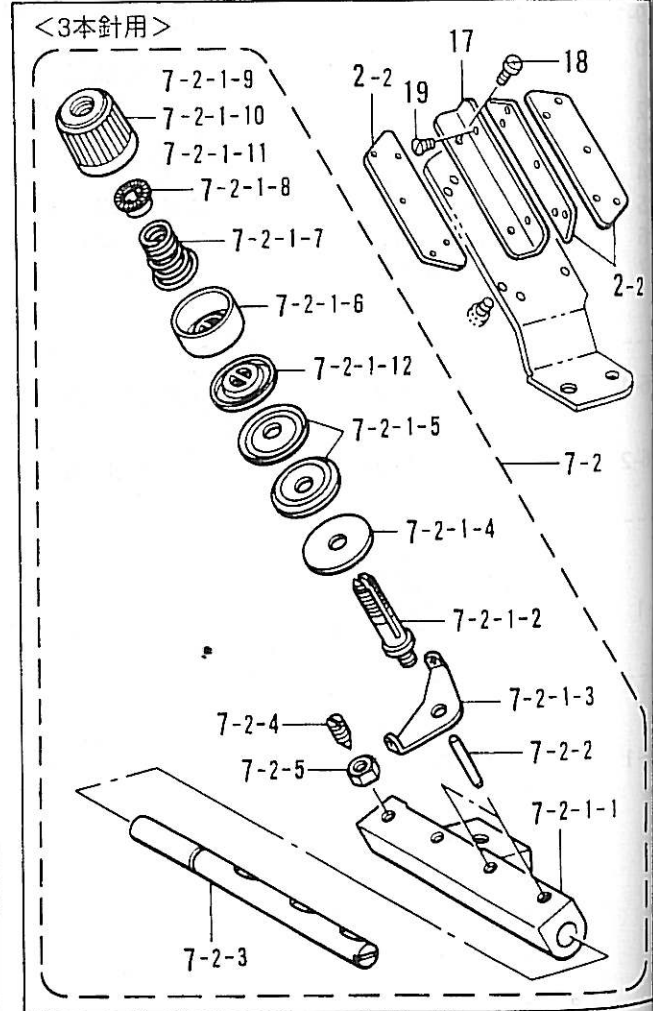
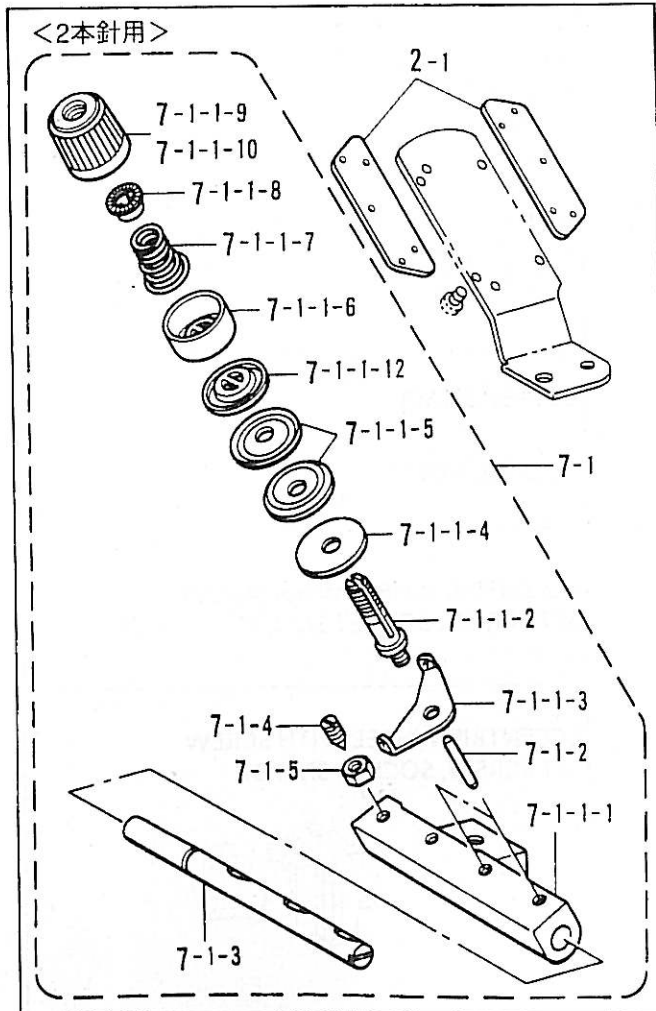
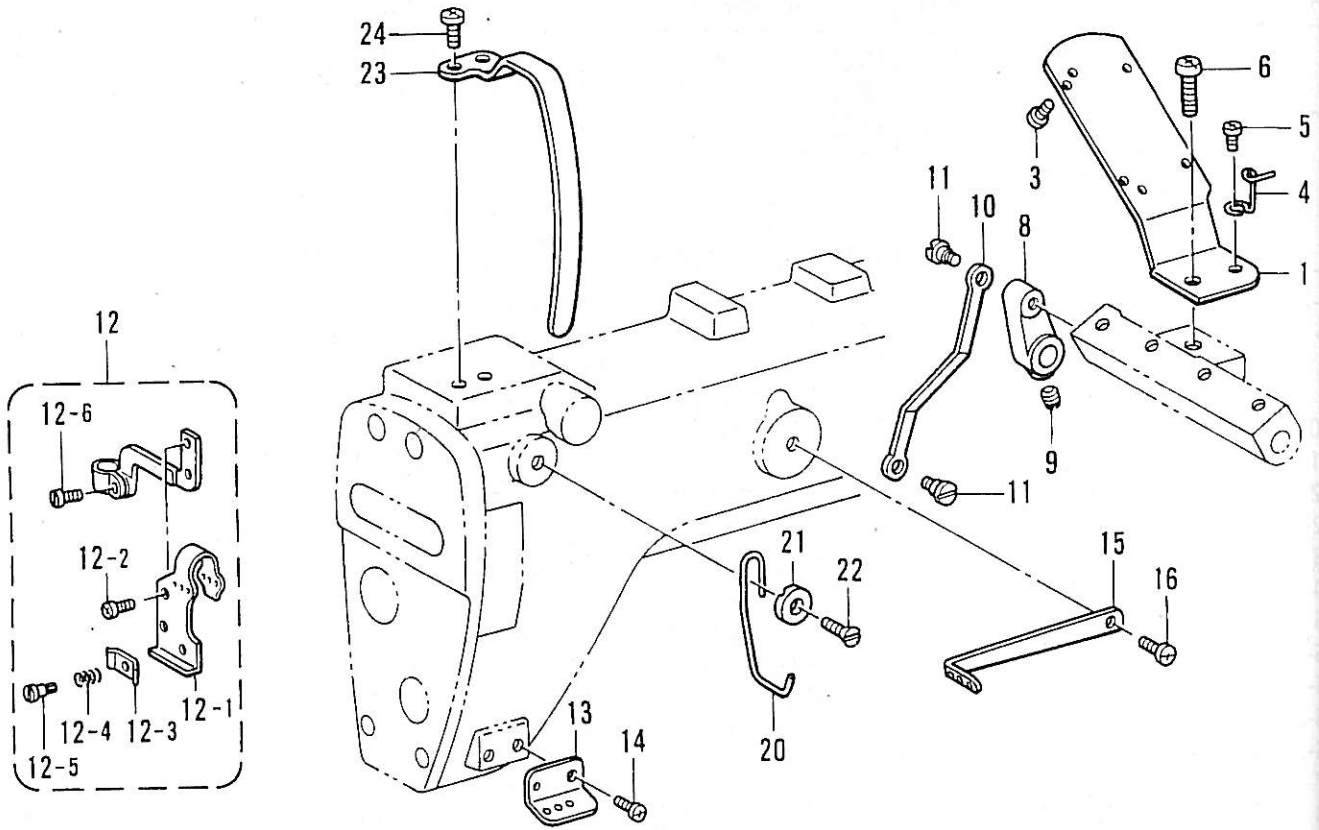
# 挑线叉组件/Lopper mechanism



## 挑线叉组件/Lopper mechanism

| 参考号    | 代码        | 数量 | 零件名称           | NAME OF PARTS                  | RM |
|--------|-----------|----|----------------|--------------------------------|----|
| 2      | S40302000 | 1  | 滑块             | ECCENTRIC WHEEL SLEEVE         |    |
| 3      | 181993101 | 1  | 拨叉             | LOPPER FEEDING FORK ASSY       |    |
| 3-1    | 105176001 | 1  | 螺丝 SM4.37      | SCREW, SM4.37                  |    |
| 4      | 105177001 | 1  | 拨叉轴            | LOOPER FEEDING FORK SHAFT      |    |
| 5      | 105178100 | 1  | 拨叉支座           | LOPPER F/FORK SHAFT BRACKET    |    |
| 6      | 105179001 | 1  | 螺丝 SM4.76      | SCREW, SM4.76                  |    |
| 7      | S40303001 | 1  | 打环器连接杆组件       | LOPPER CONNECTING ROD ASSY     |    |
| 7-1    | 105183001 | 2  | 连杆销            | LOOPER LINK SHAFT              |    |
| 7-2    | 105184000 | 2  | 螺丝 SM2.38      | SCREW, SM2.38                  |    |
| 7-3    | S40792001 | 1  | 打环器连接杆         | LOPPER LEVER                   |    |
| 8      | S40793051 | 1  | 打环器连接杆主轴       | LOPPER LEVER SHAFT             |    |
| 9      | 105191001 | 1  | 螺丝 SM4.37      | SCREW, SM4.37                  |    |
| 10     | 081010870 | 1  | 密封圈            | O RING, S10                    |    |
| 11     | 100260001 | 1  | 固定螺丝 SM5.95    | SET SCREW, SM5.95              |    |
| 12     | 181987001 | 1  | 挡板             | LOOPER CONNECT. ROD GUIDE ASSY |    |
| 12-1   | 100366001 | 2  | 固定螺丝 SM5.95    | SET SCREW, (FT) SM4.37         |    |
| 13     | 081003670 | 1  | 密封圈            | O RING, PW3                    |    |
| 14     | 014761030 | 1  | 固定螺丝 SM5.95    | SET SCREW, SOCKET (CP) SM5.95  |    |
| 15     | 105193101 | 1  | 球连杆组件          | LOOPER SHAFT LINK ASSY SET     |    |
| 15-1   | 183185101 | 1  | 固定螺丝           | LOOPER SHAFT LINK ASSY SET     |    |
| 15-1-1 | 105176001 | 1  | 螺母 SM5.95      | SCREW, SM4.37                  |    |
| 15-2   | 100022004 | 1  | 垫圈             | NUT, SM5.95                    |    |
| 15-3   | 105198000 | 1  | 打环器主轴套筒 F      | WASHER                         |    |
| 17     | 105201000 | 1  | 打环器主轴套筒 B      | LOOPER SHAFT BUSH, F           |    |
| 18     | 148877100 | 1  | 打环器主轴挡圈        | LOOPER SHAFT BUSH, B           |    |
| 19     | 181971001 | 1  | 前臂盖            | LOOPER SHAFT SET COLLAR        |    |
| 19-1   | 062680812 | 1  | 前臂防油垫          | SCREW, PAN SM4.37-40X8         |    |
| 20     | S40306001 | 1  | 螺丝 SM3.57      | FRONT FEED ARM CAP             |    |
| 21     | S40307001 | 1  | 圆盖             | PACKING                        |    |
| 22     | 105216001 | 11 | 轴承盖            | SCREW, SM3.57                  |    |
| 23     | 105217059 | 1  | 螺丝 SM3.57-40X5 | BALL BEARING                   |    |
| 24     | S40308001 | 1  | 螺丝 SM7.94      | PACKING                        |    |
| 25     | 062670512 | 4  | 密封圈            | SCREW, PAN SM3.57-40X5         |    |
| 26     | 140518001 | 1  |                | SCREW, SM7.94                  |    |
| 27     | 081007070 | 1  |                | O RING, P7                     |    |
| 16-1   | 105200101 | 1  | 打环器主轴          | LOPPER SHAFT                   |    |
| 16-2   | S16490101 | 1  | 打环器主轴          | LOOPER SHAFT                   |    |
| 1      | 181126001 | 1  | 偏心轮 带螺丝        | ECCENTRIC WHEEL WITH SCREW     |    |
| 1-1    | 153675001 | 2  | 固定螺丝 SM4.37    | SET SCREW, SOCKET SM4.37       |    |
| 29     | S36862001 | 1  | 偏心轮 带螺丝        | ECCENTRIC WHEEL WITH SCREW     |    |
| 29-1   | 153675001 | 2  | 固定螺丝 SM4.37    | SET SCREW, SOCKET SM4.37       |    |

上引线装置(927)/Upper threading mechanism(927)

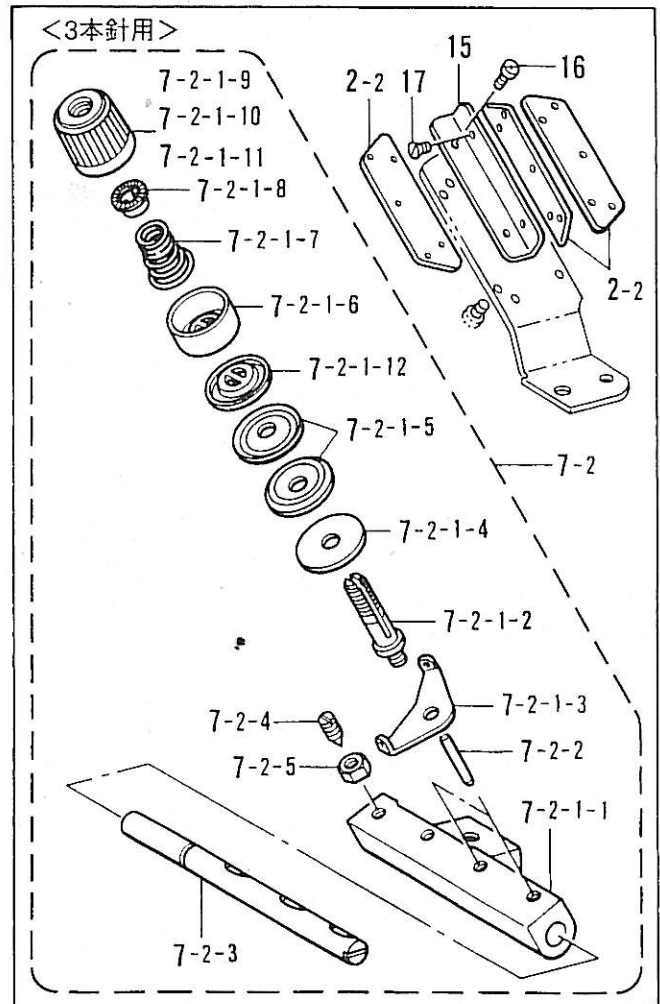
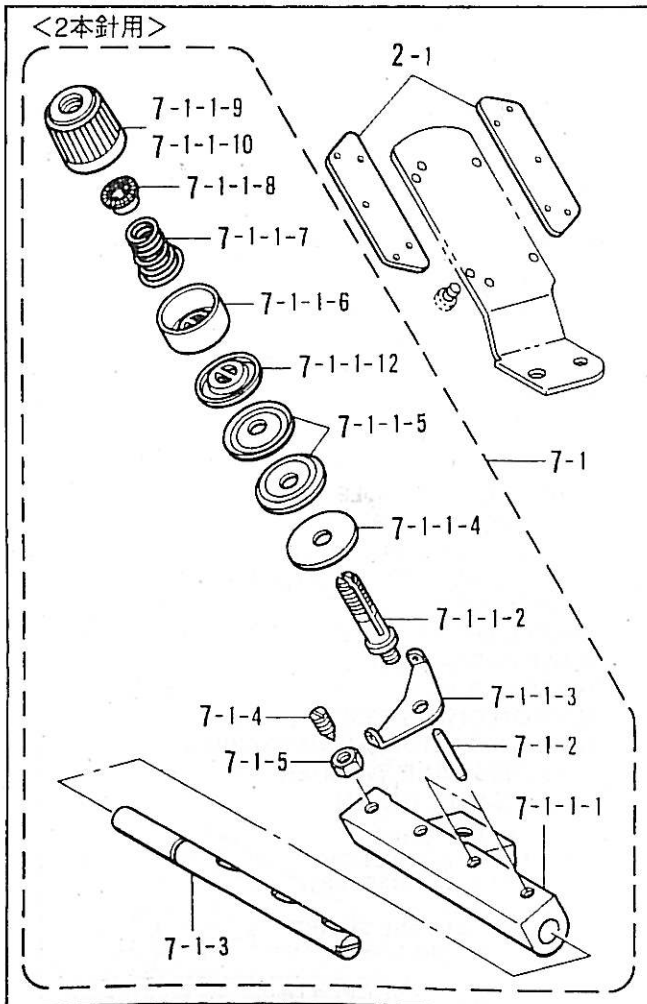
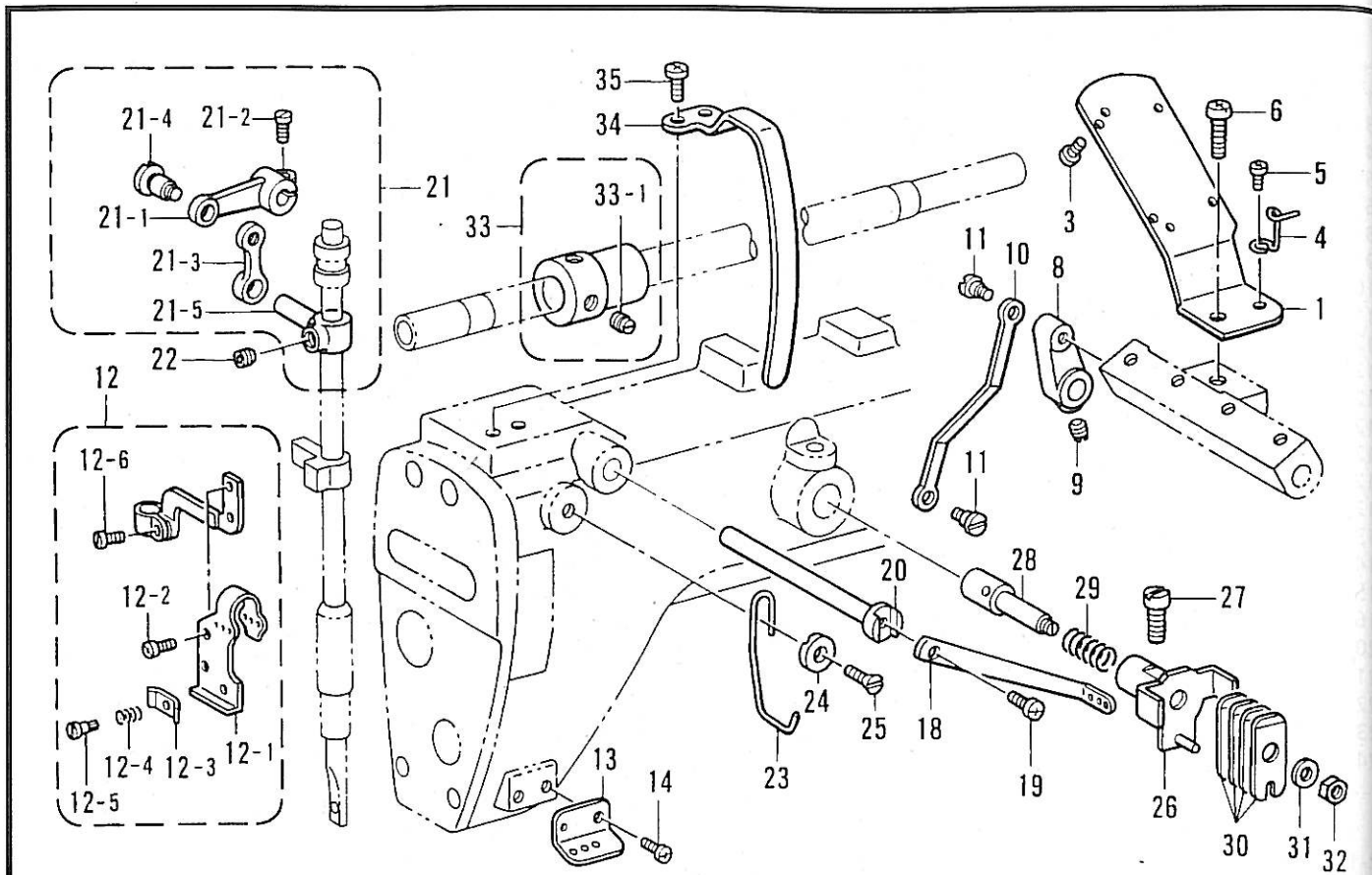


上引线装置(927)/Upper threading mechanism(927)

| 参考号      | 代码        |   |                 | NAME OF PARTS                           | RM |
|----------|-----------|---|-----------------|---|----|
| 1        | 111070109 | 1 | 上引线装置           | UPPER THREAD GUIDE                      |    |
| 3        | 062630412 | 4 | 螺丝 SM2.38-56X4  | SCREW, PAN SM2.38-56X4                  |    |
| 4        | 105222001 | 1 | 引线装置            | THREAD GUIDE                            |    |
| 5        | 062670512 | 1 | 螺丝 SM3.57-40X5  | SCREW, PAN SM3.57-40X5                  |    |
| 6        | 062712012 | 1 | 螺丝 SM4.76-32X20 | SCREW, PAN SM4.76-32X20                 |    |
| 8        | 105235251 | 1 | 松线曲柄            | TENSION RELEASE CRANK                   |    |
| 9        | 151602002 | 1 | 固定螺丝 SM4.37     | SET SCREW, SM4.37                       |    |
| 10       | 105236001 | 1 | 松线连杆            | TENSION RELEASE CONNECTING ROD          |    |
| 11       | 105237002 | 2 | 螺丝 SM2.38       | SHOULDER SCREW, SM2.38                  |    |
| 12       | 540310001 | 1 | 线张力装置           | UPPER THREAD TAKE-UP ASSY               |    |
| 12-1     | 540312001 | 1 | 上导线片            | UPPER THREAD GUIDE                      |    |
| 12-2     | 062660512 | 2 | 螺丝 SM3.57-40X7  | SCREW, PAN SM3.57-40X7                  |    |
| 12-3     | 105243001 | 1 | 上引线柄            | UPPER THREAD TAKE-UP HOLDER             |    |
| 12-4     | 105244000 | 1 | 弹簧              | SPRING                                  |    |
| 12-5     | 105245001 | 1 | 螺丝 SM2.38       | SHOULDER SCREW, SM2.38                  |    |
| 12-6     | 100064005 | 1 | 螺丝 SM3.57       | SCREW, SM3.57                           |    |
| 13       | 540313051 | 1 | 过线器             | UPPER THREAD GUIDE                      |    |
| 14       | 062670712 | 1 | 螺丝 SM3.57-40X7  | SCREW, PAN SM3.57-40X7                  |    |
| 15       | 111077001 | 1 | 夹松紧连杆           | TENSION RELEASE LEVER                   |    |
| 16       | 060670812 | 1 | 螺丝 SM3.57-40X8  | SCREW, BIND SM3.57-40X8                 |    |
| 20       | 111083001 | 1 | 上引线导线装置         | UPPER THREAD TAKE-UP GUIDE              |    |
| 21       | 111188001 | 1 | 垫圈              | WASHER                                  |    |
| 22       | 111084001 | 1 | 螺丝 SM3.57       | SCREW, FLAT SM3.57                      |    |
| 23       | 537186001 | 1 | 引线装置盖子          | THREAD TAKE-UP COVER                    |    |
| 24       | 062710812 | 2 | 螺丝 SM4.76-32X8  | SCREW, PAN SM4.76-32X8                  |    |
| -----    |           |   |                 |   |    |
| 2-1      | 105221001 | 2 | 过线板             | < FOR TWIN NEEDLE ><br>THREAD RETAINER  |    |
| 7-1      | 543446009 | 1 | 上线调节组件          | UPPER THREAD REGULATOR ASSY             |    |
| 7-1-1-1  | 111075059 | 1 | 上线松紧支架          | UPPER THREAD TENSION BRACKET            |    |
| 7-1-1-2  | 145440001 | 2 | 线松紧轴            | TENSION STUD                            |    |
| 7-1-1-3  | 110813001 | 2 | 导线装置            | NEEDLE THREAD GUIDE                     |    |
| 7-1-1-4  | 110832009 | 2 | 线松紧线            | TENSION DISC FELT                       |    |
| 7-1-1-5  | 145446001 | 4 | 夹线器             | TENSION DISC                            |    |
| 7-1-1-6  | 144103009 | 2 | 线松紧压盘           | TENSION DISC PRESSER                    |    |
| 7-1-1-7  | 144104001 | 2 | 线松紧调节弹簧         | THREAD TENSION ADJUST SPRING            |    |
| 7-1-1-8  | S30564000 | 2 | 线松紧弹簧垫圈         | TENSION SPRING WASHER                   |    |
| 7-1-1-9  | S30565002 | 1 | 线松紧盖(绿)         | TENSION NUT, GREEN                      |    |
| 7-1-1-10 | S30565003 | 1 | 线松紧盖(红)         | TENSION NUT, RED                        |    |
| 7-1-1-12 | 159805001 | 2 | 线松紧压盘           | TENSION DISC PRESSER                    |    |
| 7-1-2    | 105231000 | 2 | 销子              | PIN                                     |    |
| 7-1-3    | 111076151 | 1 | 线夹松紧主轴          | TENSION RELEASE SHAFT                   |    |
| 7-1-4    | 105233002 | 1 | 固定螺丝 SM4.37     | SET SCREW, SM4.37                       |    |
| 7-1-5    | 105234003 | 1 | 螺母 SM4.37       | NUT, SM4.37                             |    |
| -----    |           |   |                 |   |    |
| 2-2      | 105221001 | 3 | 过线板             | < FOR THREE NEEDLE ><br>THREAD RETAINER |    |
| 7-2      | 543448009 | 1 | 上线调节组件          | UPPER THREAD REGULATOR ASSY             |    |
| 7-2-1-1  | 111075059 | 1 | 上线松紧支架          | UPPER THREAD TENSION BRACKET            |    |
| 7-2-1-2  | 145440001 | 3 | 线松紧轴            | TENSION STUD                            |    |
| 7-2-1-3  | 110813001 | 3 | 导线装置            | NEEDLE THREAD GUIDE                     |    |
| 7-2-1-4  | 110832009 | 3 | 线松紧盘            | TENSION DISC FELT                       |    |
| 7-2-1-5  | 145446001 | 6 | 夹线板             | TENSION DISC                            |    |
| 7-2-1-6  | 144103009 | 3 | 线松紧压盘           | TENSION DISC PRESSER                    |    |
| 7-2-1-7  | 144104001 | 3 | 线松紧调节弹簧         | THREAD TENSION ADJUST SPRING            |    |
| 7-2-1-8  | S30564000 | 3 | 线松紧弹簧垫圈         | TENSION SPRING WASHER                   |    |
| 7-2-1-9  | S30565002 | 1 | 线松紧盖(绿)         | TENSION NUT, GREEN                      |    |
| 7-2-1-10 | S30565003 | 1 | 线松紧盖(红)         | TENSION NUT, RED                        |    |
| 7-2-1-11 | S30565004 | 1 | 线松紧盖(黄)         | TENSION NUT, YELLOW                     |    |
| 7-2-1-12 | 159805001 | 3 | 线松紧压盘           | TENSION DISC PRESSER                    |    |
| 7-2-2    | 105231000 | 3 | 销子              | PIN                                     |    |
| 7-2-3    | 111076151 | 1 | 线夹松紧主轴          | TENSION RELEASE SHAFT                   |    |
| 7-2-4    | 105233002 | 1 | 固定螺丝 SM4.37     | SET SCREW, SM4.37                       |    |
| 7-2-5    | 105234003 | 1 | 螺母 SM4.37       | NUT, SM4.37                             |    |
| 17       | 111072009 | 1 | 导线装置固定台         | THREAD GUIDE SET PLATE                  |    |
| 18       | 062630412 | 2 | 螺丝 SM2.38-56X4  | SCREW, PAN SM2.38-56X4                  |    |
| 19       | 111073001 | 2 | 螺丝 SM2.38       | SCREW, FLAT SM2.38                      |    |



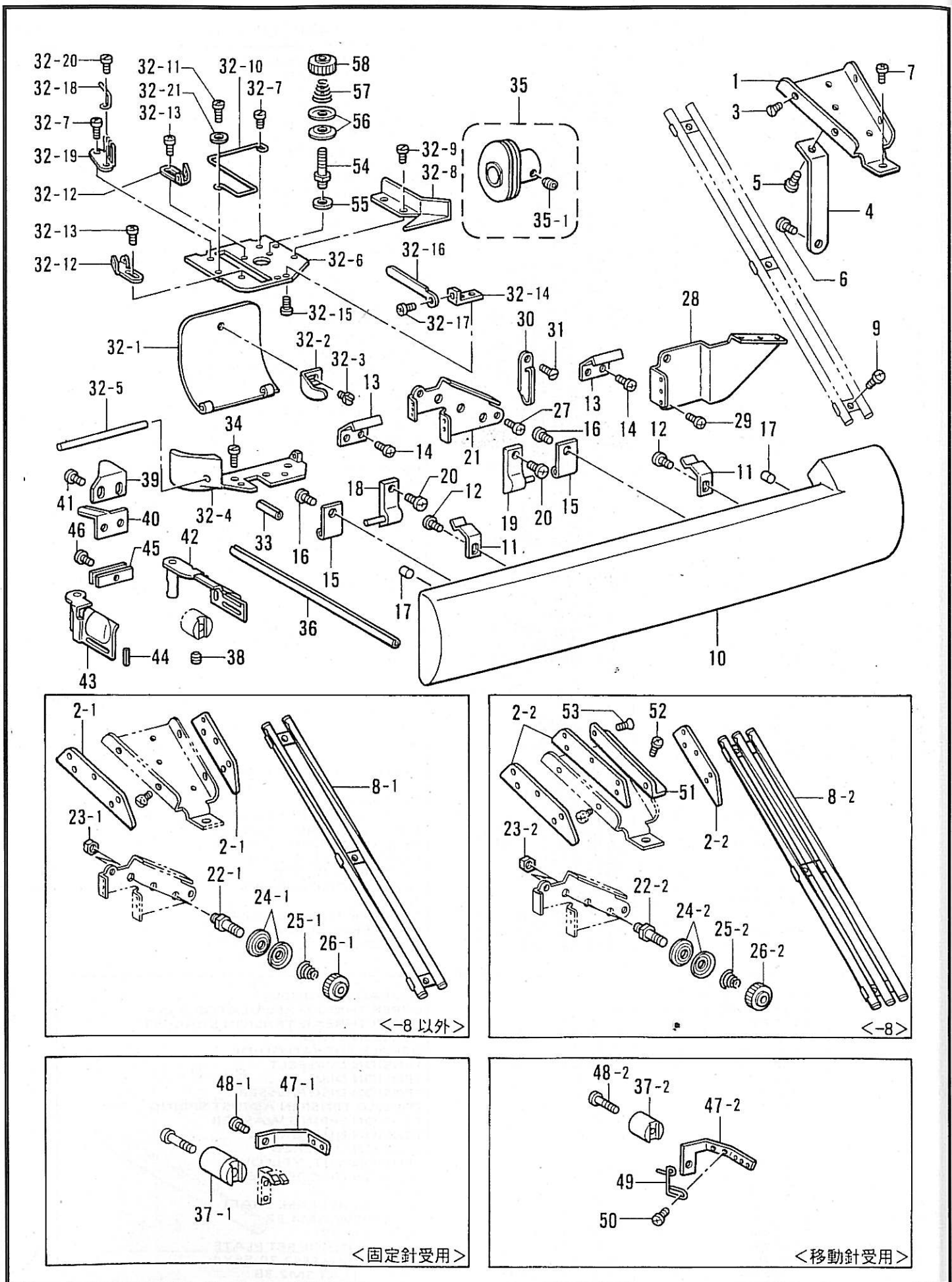
# 上引线装置(928)/Upper threading mechanism(928)



上引线装置(928)/Upper threading mechanism(928)

| 参考号      | 代码        | 数量 | 零件名称            | NAME OF PARTS                  | RM |
|----------|-----------|----|-----------------|--------------------------------|----|
| 1        | 111070109 | 1  | 上引线装置           | UPPER THREAD GUIDE             |    |
| 3        | 062630412 | 4  | 螺丝 SM2.38-56X4  | SCREW, PAN SM2.38-56X4         |    |
| 4        | 105222001 | 1  | 引丝装置            | THREAD GUIDE                   |    |
| 5        | 062670512 | 1  | 螺丝 SM3.57-40X5  | SCREW, PAN SM3.57-40X5         |    |
| 6        | 062712012 | 1  | 螺丝 SM4.76-32X20 | SCREW, PAN SM4.76-32X20        |    |
| 8        | 105235251 | 1  | 螺丝曲柄            | TENSION RELEASE CRANK          |    |
| 9        | 151602002 | 1  | 固定螺丝 SM4.37     | SET SCREW, SM4.37              |    |
| 10       | 105236001 | 1  | 螺丝连杆            | TENSION RELEASE CONNECTING ROD |    |
| 11       | 105237002 | 2  | 螺丝 SM2.38       | SHOULDER SCREW, SM2.38         |    |
| 12       | S40310001 | 1  | 螺丝张力组           | UPPER THREAD TAKE-UP ASSY      |    |
| 12-1     | S40312001 | 1  | 螺丝张力组           | UPPER THREAD TAKE-UP ASSY      |    |
| 12-2     | 062660512 | 2  | 螺丝 SM3.57-40X7  | SCREW, PAN SM3.57-40X7         |    |
| 12-3     | 105243001 | 1  | 螺丝              | UPPER THREAD TAKE-UP HOLDER    |    |
| 12-4     | 105244000 | 1  | 螺丝              | SPRING                         |    |
| 12-5     | 105245001 | 1  | 螺丝 SM2.38       | SHOULDER SCREW, SM2.38         |    |
| 12-6     | 100064005 | 1  | 螺丝 SM3.57       | SCREW, SM3.57                  |    |
| 13       | S40313051 | 1  | 螺丝              | UPPER THREAD GUIDE             |    |
| 14       | 062670712 | 1  | 螺丝 SM3.57-40X6  | SCREW, PAN SM3.57-40X6         |    |
| 18       | 111077001 | 1  | 螺丝              | TENSION RELEASE LEVER          |    |
| 19       | 060670612 | 1  | 螺丝 SM3.57-40X6  | SCREW, BIND SM3.57-40X6        |    |
| 20       | 111078051 | 1  | 螺丝 SM3.57-40X6  | TENSION RELEASE LEVER SHAFT    |    |
| 21       | 111506101 | 1  | 螺丝              | T/RELEASE CONNECTING ROD ASSY  |    |
| 21-1     | 111079001 | 1  | 螺丝              | TENSION RELEASE CONNECTING ROD |    |
| 21-2     | 100064005 | 1  | 螺丝              | SCREW, SM3.57                  |    |
| 21-3     | 149011051 | 1  | 螺丝              | TENSION RELEASE LINK           |    |
| 21-4     | 115132002 | 1  | 螺丝 M4.76        | SHOULDER SCREW, M4.76          |    |
| 21-5     | 111082051 | 1  | 螺丝              | TENSION RELEASE STUD           |    |
| 22       | 013760610 | 1  | 螺丝 SM5.95       | SET SCREW, (CP) SM5.95         |    |
| 23       | 111083001 | 1  | 螺丝              | UPPER THREAD TAKE-UP GUIDE     |    |
| 24       | 111188001 | 1  | 螺丝              | WASHER                         |    |
| 25       | 111084001 | 1  | 螺丝 SM3.57       | SCREW, FLAT SM3.57             |    |
| 26       | 111089001 | 1  | 螺丝              | UPPER THREAD TENSION BRACKET   |    |
| 27       | 105073001 | 1  | 螺丝 SM5.95       | SET SCREW, SOCKET SM5.95       |    |
| 28       | 111189001 | 1  | 螺丝              | UPPER THREAD STUD ASSY         |    |
| 29       | 111093001 | 1  | 螺丝              | SPRING                         |    |
| 30       | 105277001 | 4  | 螺丝              | LOWER THREAD TENSION PLATE     |    |
| 31       | 100645003 | 1  | 螺丝              | WASHER                         |    |
| 32       | 105234003 | 1  | 螺丝 SM4.37       | NUT, SM4.37                    |    |
| 33       | 181060001 | 1  | 螺丝              | UPPER THREAD CAM WITH SCREW    |    |
| 33-1     | 100058003 | 2  | 螺丝 SM5.95       | SET SCREW, SM5.95              |    |
| 34       | S37186001 | 1  | 螺丝              | THREAD TAKE-UP COVER           |    |
| 35       | 062710812 | 2  | 螺丝 SM4.76-32X8  | SCREW, PAN SM4.76-32X8         |    |
| 2-1      | 105221001 | 2  | 过上线板            | THREAD RETAINER                |    |
| 7-1      | S41316009 | 1  | 过上线板            | UPPER THREAD REGULATOR ASSY    |    |
| 7-1-1-1  | 111075059 | 1  | 过上线板            | UPPER THREAD TENSION BRACKET   |    |
| 7-1-1-2  | 145440001 | 2  | 过上线板            | TENSION STUD                   |    |
| 7-1-1-3  | 110813001 | 2  | 过上线板            | NEEDLE THREAD GUIDE            |    |
| 7-1-1-4  | 110832009 | 2  | 过上线板            | TENSION DISC FELT              |    |
| 7-1-1-5  | 145446001 | 4  | 过上线板            | TENSION DISC                   |    |
| 7-1-1-6  | 144103009 | 2  | 过上线板            | TENSION DISC PRESSER           |    |
| 7-1-1-7  | 148851001 | 2  | 过上线板            | THREAD TENSION ADJUST SPRING   |    |
| 7-1-1-8  | S30564000 | 2  | 过上线板            | TENSION SPRING WASHER          |    |
| 7-1-1-9  | S30565002 | 1  | 过上线板            | TENSION NUT, GREEN             |    |
| 7-1-1-10 | S30565003 | 1  | 过上线板            | TENSION NUT, RED               |    |
| 7-1-1-12 | 159805001 | 2  | 过上线板            | TENSION NUT, YELLOW            |    |
| 7-1-2    | 105231000 | 2  | 过上线板            | TENSION DISC PRESSER           |    |
| 7-1-3    | 111076151 | 1  | 过上线板            | PIN                            |    |
| 7-1-4    | 105233002 | 1  | 过上线板            | TENSION RELEASE SHAFT          |    |
| 7-1-5    | 105234003 | 1  | 过上线板            | SET SCREW, SM4.37              |    |
| 7-1-5    | 105234003 | 1  | 过上线板            | NUT, SM4.37                    |    |
| 2-2      | 105221001 | 3  | 过上线板            | THREAD RETAINER                |    |
| 7-2      | S41318009 | 1  | 过上线板            | UPPER THREAD REGULATOR ASSY    |    |
| 7-2-1-1  | 111075059 | 1  | 过上线板            | UPPER THREAD TENSION BRACKET   |    |
| 7-2-1-2  | 145440001 | 3  | 过上线板            | TENSION STUD                   |    |
| 7-2-1-3  | 110813001 | 3  | 过上线板            | NEEDLE THREAD GUIDE            |    |
| 7-2-1-4  | 110832009 | 3  | 过上线板            | TENSION DISC FELT              |    |
| 7-2-1-5  | 145446001 | 6  | 过上线板            | TENSION DISC                   |    |
| 7-2-1-6  | 144103009 | 3  | 过上线板            | TENSION DISC PRESSER           |    |
| 7-2-1-7  | 148851001 | 3  | 过上线板            | THREAD TENSION ADJUST SPRING   |    |
| 7-2-1-8  | S30564000 | 3  | 过上线板            | TENSION SPRING WASHER          |    |
| 7-2-1-9  | S30565002 | 1  | 过上线板            | TENSION NUT, GREEN             |    |
| 7-2-1-10 | S30565003 | 1  | 过上线板            | TENSION NUT, RED               |    |
| 7-2-1-11 | S30565004 | 1  | 过上线板            | TENSION NUT, YELLOW            |    |
| 7-2-1-12 | 159805001 | 3  | 过上线板            | TENSION DISC PRESSER           |    |
| 7-2-2    | 105231000 | 3  | 过上线板            | PIN                            |    |
| 7-2-3    | 111076151 | 1  | 过上线板            | TENSION RELEASE SHAFT          |    |
| 7-2-4    | 105233002 | 1  | 过上线板            | SET SCREW, SM4.37              |    |
| 7-2-5    | 105234003 | 1  | 过上线板            | NUT, SM4.37                    |    |
| 15       | 111072009 | 1  | 过上线板            | THREAD GUIDE SET PLATE         |    |
| 16       | 062630412 | 2  | 螺丝 SM2.38-56X4  | SCREW, PAN SM2.38-56X4         |    |
| 17       | 111073001 | 2  | 螺丝 SM2.38       | SCREW, FLAT SM2.38             |    |

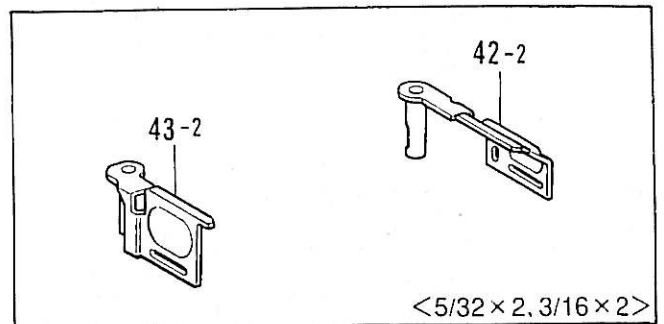
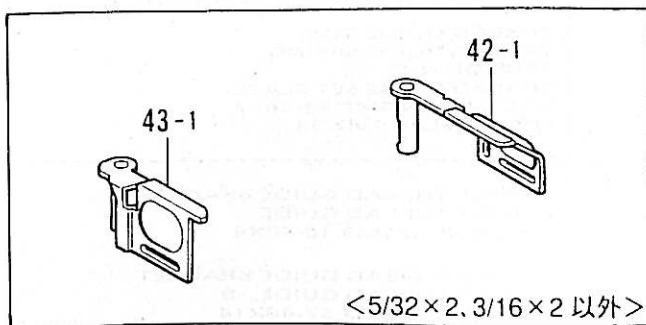
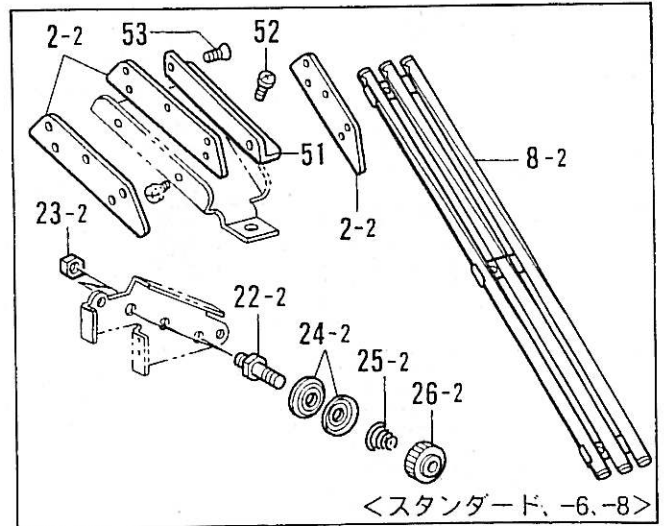
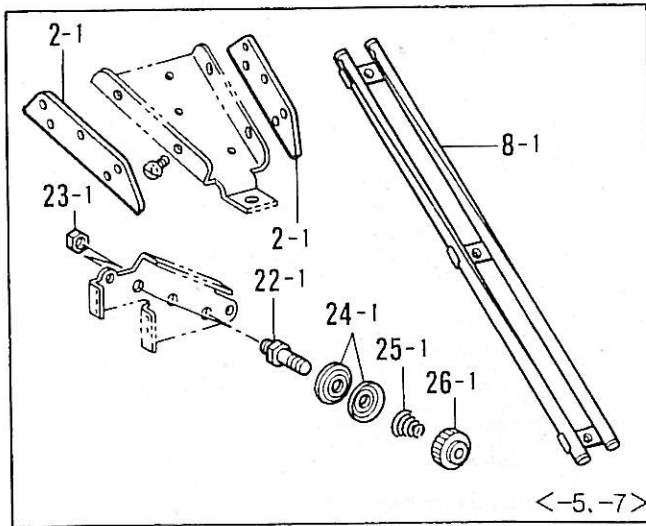
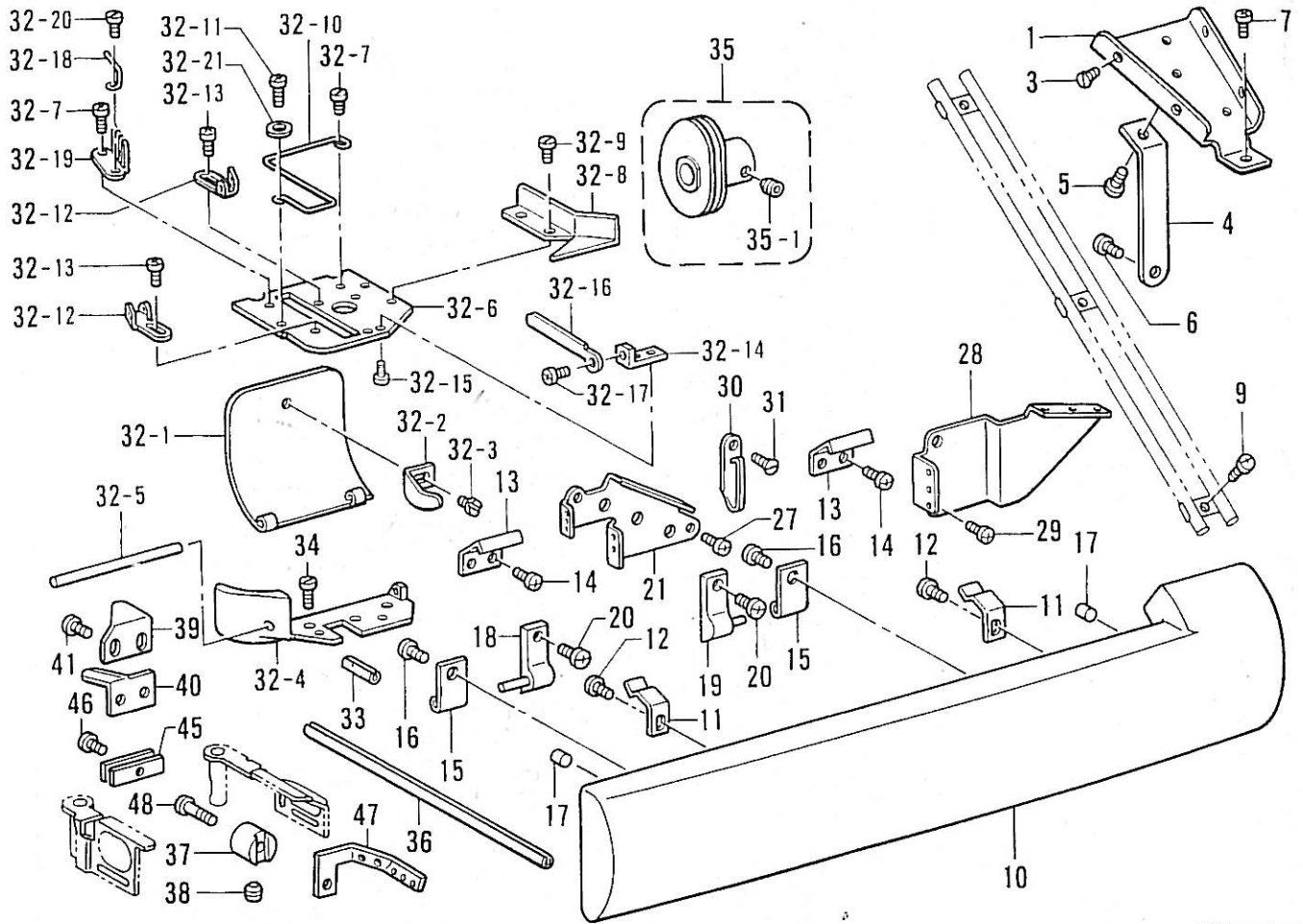
下引线装置(927)/Lower threading mechanism(927)



下引线装置(927)/Lower threading mechanism(927)

| 参考号   | 代码        | 数量 | 零件名称            | NAME OF PARTS                  | RM |
|-------|-----------|----|-----------------|--------------------------------|----|
| 1     | 111095009 | 1  | 下引线挡板           | LOWER THREAD GUIDE RETAINER    |    |
| 3     | 111073001 | 4  | 螺丝 SM2.38       | SCREW, FLAT SM2.38             |    |
| 4     | 111096009 | 1  | 下引线柱            | LOWER THREAD GUIDE SUPPORT     |    |
| 5     | 062670412 | 1  | 螺丝 SM3.57-40X4  | SCREW, PAN SM3.57-40X4         |    |
| 6     | 062670512 | 1  | 螺丝 SM3.57-40X5  | SCREW, PAN SM3.57-40X5         |    |
| 7     | 062671012 | 1  | 螺丝 SM3.57-40X10 | SCREW, PAN SM3.57-40X10        |    |
| 9     | 062670812 | 3  | 螺丝 SM3.57-40X8  | SCREW, PAN SM3.57-40X8         |    |
| 10    | S40319001 | 1  | 盖簧              | FRONT COVER                    |    |
| 11    | S40320051 | 2  | 前盖簧             | FONT COVER SPRING              |    |
| 12    | 060670512 | 2  | 前盖钩 SM3.57-40X5 | SCREW, BIND SM3.57-40X5        |    |
| 13    | S40321051 | 2  | 前盖钩 SM3.57-40X6 | FRONT COVER HOOK               |    |
| 14    | 062670612 | 4  | 前盖固定块           | SCREW, PAN SM3.57-40X6         |    |
| 15    | S40322051 | 2  | 前盖固定块           | HINGE                          |    |
| 16    | 062670612 | 2  | 前盖橡胶垫           | SCREW, PAN SM3.57-40X6         |    |
| 17    | 142274009 | 2  | 前盖橡胶垫           | RUBBER CAP, 4.2                |    |
| 18    | 105257009 | 1  | 前盖摇臂, 左         | L/THREAD GUIDE HINGE ASSY, L   |    |
| 19    | 105260009 | 1  | 前盖摇臂, 右         | L/THREAD GUIDE HINGE ASSY, R   |    |
| 20    | 062671012 | 2  | 前盖松紧支架          | SCREW, PAN SM3.57-40X10        |    |
| 21    | S40323001 | 1  | 下引线装置           | LOWER THREAD TENSION BRACKET   |    |
| 27    | 062670612 | 2  | 下引线装置           | SCREW, PAN SM3.57-40X6         |    |
| 28    | S40325001 | 1  | 下引线装置           | LOWER THREAD GUIDE             |    |
| 29    | 062670612 | 2  | 下引线装置           | SCREW, PAN SM3.57-40X6         |    |
| 30    | 112658001 | 1  | 下引线装置           | ARM THREAD GUIDE, M            |    |
| 31    | 108960002 | 1  | 下引线装置           | SCREW, FLAT SM3.57             |    |
| 32    | S40266051 | 1  | 过线器盖            | LOWER THREAD TAKE-UP BRACKET   |    |
| 32-1  | 105280009 | 1  | 过线器盖            | L/THREAD TAKE-UP LEVER COVER   |    |
| 32-2  | 105281001 | 1  | 过线器盖            | SPRING, PLATE                  |    |
| 32-3  | 122771002 | 1  | 过线器盖            | SCREW, SM2.38                  |    |
| 32-4  | 105284101 | 1  | 过线器盖            | L/TR. TAKE-UP LEVER BRACKET    |    |
| 32-5  | 105285000 | 1  | 过线器盖            | L/TR. TAKE-UP LEVER COV. SHAFT |    |
| 32-6  | S40326051 | 1  | 过线器盖            | L/TR. TAKE-UP LEVER BRACKET    |    |
| 32-7  | 062670612 | 2  | 过线器盖            | SCREW, PAN SM3.57-40X6         |    |
| 32-8  | 105287001 | 1  | 过线器盖            | GUIDE PLATE                    |    |
| 32-9  | 105288001 | 2  | 过线器盖            | SCREW, SM2.38                  |    |
| 32-10 | S40327051 | 1  | 过线器盖            | LOWER THREAD GUIDE             |    |
| 32-11 | 060660416 | 1  | 过线器盖            | SCREW, BIND SM3.18-40X4        |    |
| 32-12 | S40795101 | 2  | 过线器盖            | LOWER THREAD GUIDE             |    |
| 32-13 | 060660416 | 2  | 过线器盖            | SCREW, BIND SM3.18-40X4        |    |
| 32-14 | S40328051 | 1  | 过线器盖            | THREAD RELEASE BASE            |    |
| 32-15 | 062660412 | 2  | 过线器盖            | SCREW, PAN SM3.18-40X4         |    |
| 32-16 | S40329051 | 1  | 过线器盖            | LOWER THREAD PRESSER           |    |
| 32-17 | 062660412 | 1  | 过线器盖            | SCREW, PAN SM3.18-40X4         |    |
| 32-18 | 105296001 | 1  | 过线器盖            | THREAD GUIDE                   |    |
| 32-19 | 111112001 | 1  | 过线器盖            | LOWER THREAD GUIDE PLATE       |    |
| 32-20 | 105288001 | 1  | 过线器盖            | SCREW, SM2.38                  |    |
| 32-21 | 026030136 | 1  | 过线器盖            | WASHER, PLAIN S3               |    |
| 33    | 047501242 | 1  | 过线器盖            | PIN, SPRING ROLL AW5           |    |
| 34    | 100064005 | 2  | 过线器盖            | SCREW, SM3.57                  |    |
| 35    | S40330051 | 1  | 过线器盖            | LOWER THREAD TAKE-UP W/S, M    |    |
| 35-1  | 014680422 | 2  | 过线器盖            | SET SCREW, SOCKET (CP) SM4.37  |    |
| 36    | 105300101 | 1  | 过线器盖            | LOWER THREAD FEED BAR GUIDE    |    |
| 37    | 013760610 | 1  | 过线器盖            | SET SCREW, (CP) SM5.95         |    |
| 38    | 111113101 | 1  | 过线器盖            | THREAD TRIMMER GUIDE PLATE     |    |
| 39    | 111114101 | 1  | 过线器盖            | THREAD TRIMMER                 |    |
| 40    | 062670612 | 2  | 过线器盖            | SCREW, PAN SM3.57-40X6         |    |
| 41    | S40335051 | 1  | 过线器盖            | LOOPER COVER, RA               |    |
| 42    | S40338051 | 1  | 过线器盖            | LOOPER COVER, LA               |    |
| 43    | 047200842 | 1  | 过线器盖            | PIN, SPRING ROLL AW2           |    |
| 44    | S40799051 | 2  | 过线器盖            | SPRING                         |    |
| 45    | 062670712 | 1  | 过线器盖            | SCREW, PAN SM3.57-40X7         |    |
| 46    | S08987001 | 1  | 过线器盖            | THREAD TENSION CONTROL STUD    |    |
| 54    | 146354001 | 1  | 过线器盖            | WASHER, PLAIN S                |    |
| 55    | 144504001 | 2  | 过线器盖            | THREAD GUIDE DISC              |    |
| 56    | S40324001 | 1  | 过线器盖            | THREAD GUIDE SPRING            |    |
| 57    | S40324001 | 1  | 过线器盖            | TENSION NUT                    |    |
| 58    | 155510001 | 1  | 过线器盖            |                                |    |
| 2-1   | 105221001 | 2  | 过线板             | THREAD RETAINER                |    |
| 8-1   | 105251009 | 1  | 过线管             | INGLINED GUIDE TUBE ASSY       |    |
| 22-1  | S08987001 | 2  | 过线管             | THREAD TENSION CONTROL STUD    |    |
| 23-1  | 021680202 | 2  | 过线管             | NUT, 2 SM4.37                  |    |
| 24-1  | 144504001 | 4  | 过线管             | THREAD GUIDE DISC              |    |
| 25-1  | S40324001 | 2  | 过线管             | THREAD GUIDE SPRING            |    |
| 26-1  | 155510001 | 2  | 过线管             | TENSION NUT                    |    |
| 2-2   | 105221001 | 3  | 过线板             | THREAD RETAINER                |    |
| 8-2   | 111097009 | 1  | 过线管             | INGLINED GUIDE TUBE ASSY       |    |
| 22-2  | S08987001 | 3  | 过线管             | THREAD TENSION CONTROL STUD    |    |
| 23-2  | 021680202 | 3  | 过线管             | THREAD GUIDE DISC              |    |
| 24-2  | 144504001 | 6  | 过线管             | THREAD GUIDE SPRING            |    |
| 25-2  | S40324001 | 3  | 过线管             | TENSION NUT                    |    |
| 26-2  | 155510001 | 3  | 过线管             | THREAD GUIDE SET PLATE         |    |
| 51    | 111072009 | 1  | 过线管             | SCREW, PAN SM2.38-56X4         |    |
| 52    | 062630412 | 2  | 过线管             | SCREW, FLAT SM2.38             |    |
| 53    | 111073001 | 2  | 过线管             |                                |    |
| 37-1  | 105301001 | 1  | 挑线引线支架          | LOOPER THREAD GUIDE BRACKET    |    |
| 47-1  | 105304001 | 1  | 挑线引线装置          | LOOPER THREAD GUIDE            |    |
| 48-1  | 062660612 | 1  | 挑线引线装置          | SCREW, PAN SM3.18-40X6         |    |
| 37-2  | 147291001 | 1  | 挑线引线支架          | LOOPER THREAD GUIDE BRACKET    |    |
| 47-2  | S16487151 | 1  | 挑线引线装置, -8      | LOOPER THREAD GUIDE, -8        |    |
| 48-2  | 062671412 | 1  | 挑线引线装置          | SCREW, PAN SM3.57-40X14        |    |
| 49    | S40341001 | 1  | 挑线引线装置          | LOOPER THREAD GUIDE            |    |
| 50    | 062630412 | 2  | 挑线引线装置          | SCREW, PAN SM2.38-56X4         |    |

下引线装置(928)/Lower threading mechanism(928)



下引线装置(928)/Lower threading mechanism(928)

| 参考号   | 代码        | 数量 | 零件名称            | NAME OF PARTS                  | RM |
|-------|-----------|----|-----------------|--------------------------------|----|
| 1     | 111095009 | 1  | 下引线挡板           | LOWER THREAD GUIDE RETAINER    |    |
| 3     | 111073001 | 4  | 螺丝 SM2.38       | SCREW, FLAT SM2.38             |    |
| 4     | 111096009 | 1  | 下引线柱            | LOWER THREAD GUIDE SUPPORT     |    |
| 5     | 062670412 | 1  | 螺丝 SM3.57-40X4  | SCREW, PAN SM3.57-40X4         |    |
| 6     | 062670512 | 1  | 螺丝 SM3.57-40X5  | SCREW, PAN SM3.57-40X5         |    |
| 7     | 062671012 | 1  | 螺丝 SM3.57-40X10 | SCREW, PAN SM3.57-40X10        |    |
| 9     | 062670812 | 1  | 螺丝 SM3.57-40X8  | SCREW, PAN SM3.57-40X8         |    |
| 10    | 540319001 | 3  | 前盖              | SCREW, PAN SM3.57-40X8         |    |
| 11    | 540320051 | 2  | 前盖弹簧            | FRONT COVER SPRING             |    |
| 12    | 060670512 | 2  | 螺丝 SM3.57-40X5  | SCREW, BIND SM3.57-40X5        |    |
| 13    | 540321051 | 2  | 前盖钩             | FRONT COVER HOOK               |    |
| 14    | 062670612 | 4  | 螺丝 SM3.57-40X6  | SCREW, PAN SM3.57-40X6         |    |
| 15    | 540322051 | 2  | 前盖固定块           | HINGE                          |    |
| 16    | 062670612 | 2  | 螺丝 SM3.57-40X6  | SCREW, PAN SM3.57-40X6         |    |
| 17    | 142274009 | 2  | 橡胶垫             | RUBBER CAP, 4.2                |    |
| 18    | 105257009 | 1  | 前盖摇臂,左          | L/THREAD GUIDE HINGE ASSY, L   |    |
| 19    | 105260009 | 1  | 前盖摇臂,右          | L/THREAD GUIDE HINGE ASSY, R   |    |
| 20    | 062671012 | 2  | 螺丝 SM3.57-40X10 | SCREW, PAN SM3.57-40X10        |    |
| 21    | 540323001 | 1  | 下导线松紧支架         | LOWER THREAD TENSION BRACKET   |    |
| 27    | 062670612 | 2  | 螺丝 SM3.57-40X6  | SCREW, PAN SM3.57-40X6         |    |
| 28    | 540325001 | 1  | 下引线装置           | LOWER THREAD GUIDE             |    |
| 29    | 062670612 | 2  | 螺丝 SM3.57-40X6  | SCREW, PAN SM3.57-40X6         |    |
| 30    | 112658001 | 1  | 引线装置            | ARM THREAD GUIDE, M            |    |
| 31    | 108960002 | 1  | 螺丝 SM3.57       | SCREW, FLAT SM3.57             |    |
| 32    | 540266051 | 1  | 下导线支架           | LOWER THREAD TAKE-UP BRACKET   |    |
| 32-1  | 105280009 | 1  | 过线器盖            | L/THREAD TAKE-UP LEVER COVER   |    |
| 32-2  | 105281001 | 1  | 弹簧              | SPRING, PLATE                  |    |
| 32-3  | 122771002 | 1  | 螺丝 SM2.38       | SCREW, SM2.38                  |    |
| 32-4  | 105284101 | 1  | 过线连杆支架          | L/TR. TAKE-UP LEVER BRACKET    |    |
| 32-5  | 105285000 | 1  | 过线连杆盖主轴         | L/TR. TAKE-UP LEVER COV. SHAFT |    |
| 32-6  | 540326051 | 1  | 过线连杆支架          | L/TR. TAKE-UP LEVER BRACKET    |    |
| 32-7  | 062670612 | 2  | 螺丝 SM3.57-40X6  | SCREW, PAN SM3.57-40X6         |    |
| 32-8  | 105287001 | 1  | 引线台             | GUIDE PLATE                    |    |
| 32-9  | 105288001 | 2  | 螺丝 SM2.38       | SCREW, SM2.38                  |    |
| 32-10 | 540327051 | 1  | 下引线装置           | LOWER THREAD GUIDE             |    |
| 32-11 | 060660416 | 1  | 螺丝 SM3.18-40X4  | SCREW, BIND SM3.18-40X4        |    |
| 32-12 | 540795101 | 2  | 下引线装置           | LOWER THREAD GUIDE             |    |
| 32-13 | 060660416 | 2  | 螺丝 SM3.18-40X4  | SCREW, BIND SM3.18-40X4        |    |
| 32-14 | 540328051 | 1  | 松线座             | THREAD RELEASE BASE            |    |
| 32-15 | 062660412 | 2  | 螺丝 SM3.18-40X4  | SCREW, PAN SM3.18-40X4         |    |
| 32-16 | 540329051 | 1  | 下压线装置           | LOWER THREAD PRESSER           |    |
| 32-17 | 062660412 | 1  | 螺丝 SM3.18-40X4  | SCREW, PAN SM3.18-40X4         |    |
| 32-18 | 105296001 | 1  | 引线装置            | THREAD GUIDE                   |    |
| 32-19 | 111112001 | 1  | 下引线台            | LOWER THREAD GUIDE PLATE       |    |
| 32-20 | 105288001 | 1  | 螺丝 SM2.38       | SCREW, SM2.38                  |    |
| 32-21 | 026030136 | 1  | 垫圈              | WASHER, PLAIN S 3              |    |
| 33    | 047501242 | 1  | 弹簧销             | PIN, SPRING ROLL AW5           |    |
| 34    | 100064005 | 2  | 螺丝 SM3.57       | SCREW, SM3.57                  |    |
| 35    | 540342051 | 1  | 下导线轮组件          | LOWER THREAD TAKE-UP W/S, H    |    |
| 35-1  | 014680422 | 2  | 固定螺母            | SET SCREW, SOCKET (CP) SM4.37  |    |
| 36    | 105300101 | 1  | 过线管             | LOWER THREAD FEED BAR GUIDE    |    |
| 37    | 147291001 | 1  | 挑线引线支架          | LOOPER THREAD GUIDE BRACKET    |    |
| 38    | 013760610 | 1  | 固定螺母            | SET SCREW, (CP) SM5.95         |    |
| 39    | 111113101 | 1  | 剪线台             | THREAD TRIMMER GUIDE PLATE     |    |
| 40    | 111114101 | 1  | 剪线刀片            | THREAD TRIMMER                 |    |
| 41    | 062670612 | 2  | 螺丝 SM3.57-40X6  | SCREW, PAN SM3.57-40X6         |    |
| 42    | 540335051 | 1  | 挑线叉盖,右          | LOOPER COVER, RA               |    |
| 43    | 540338051 | 1  | 挑线叉盖,左          | LOOPER COVER, LA               |    |
| 44    | 540799051 | 2  | 弹簧              | SPRING                         |    |
| 45    | 062671412 | 1  | 螺丝 SM3.57-40X14 | SCREW, PAN SM3.57-40X14        |    |
| 8-1   | 105251009 | 1  | 过线管组件           | INGLINED GUIDE TUBE ASSY       |    |
| 22-1  | 508987001 | 2  | 压线控制销           | THREAD TENSION CONTROL STUD    |    |
| 23-1  | 021680202 | 2  | 螺母              | NUT, 2 SM4.37                  |    |
| 24-1  | 144504001 | 4  | 引线盘             | THREAD GUIDE DISC              |    |
| 25-1  | 540324001 | 2  | 引线弹簧            | THREAD GUIDE SPRING            |    |
| 26-1  | 155510001 | 2  | 压线螺母            | TENSION NUT                    |    |
| 8-2   | 111097009 | 1  | 过线管组件           | INGLINED GUIDE TUBE ASSY       |    |
| 22-2  | 508987001 | 3  | 压线控制销           | THREAD TENSION CONTROL STUD    |    |
| 23-2  | 021680202 | 3  | 螺母              | NUT, 2 SM4.37                  |    |
| 24-2  | 144504001 | 6  | 引线盘             | THREAD GUIDE DISC              |    |
| 25-2  | 540324001 | 3  | 引线弹簧            | THREAD GUIDE SPRING            |    |
| 26-2  | 155510001 | 3  | 压线螺母            | TENSION NUT                    |    |
| 51    | 111072009 | 1  | 引线固定盘           | THREAD GUIDE SET PLATE         |    |
| 52    | 062630412 | 2  | 螺丝 SM2.38-56X4  | SCREW, PAN SM2.38-56X4         |    |
| 53    | 111073001 | 2  | 螺丝 SM2.38       | SCREW, FLAT SM2.38             |    |
| 42-1  | 540336051 | 1  | 挑线叉盖,右          | LOOPER COVER, RB               |    |
| 43-1  | 540339051 | 1  | 挑线叉盖,左          | LOOPER COVER, LB               |    |
| 42-2  | 540337051 | 1  | 挑线叉盖,右          | LOOPER COVER, RC               |    |
| 43-2  | 540340051 | 1  | 挑线叉盖,左          | LOOPER COVER, LC               |    |