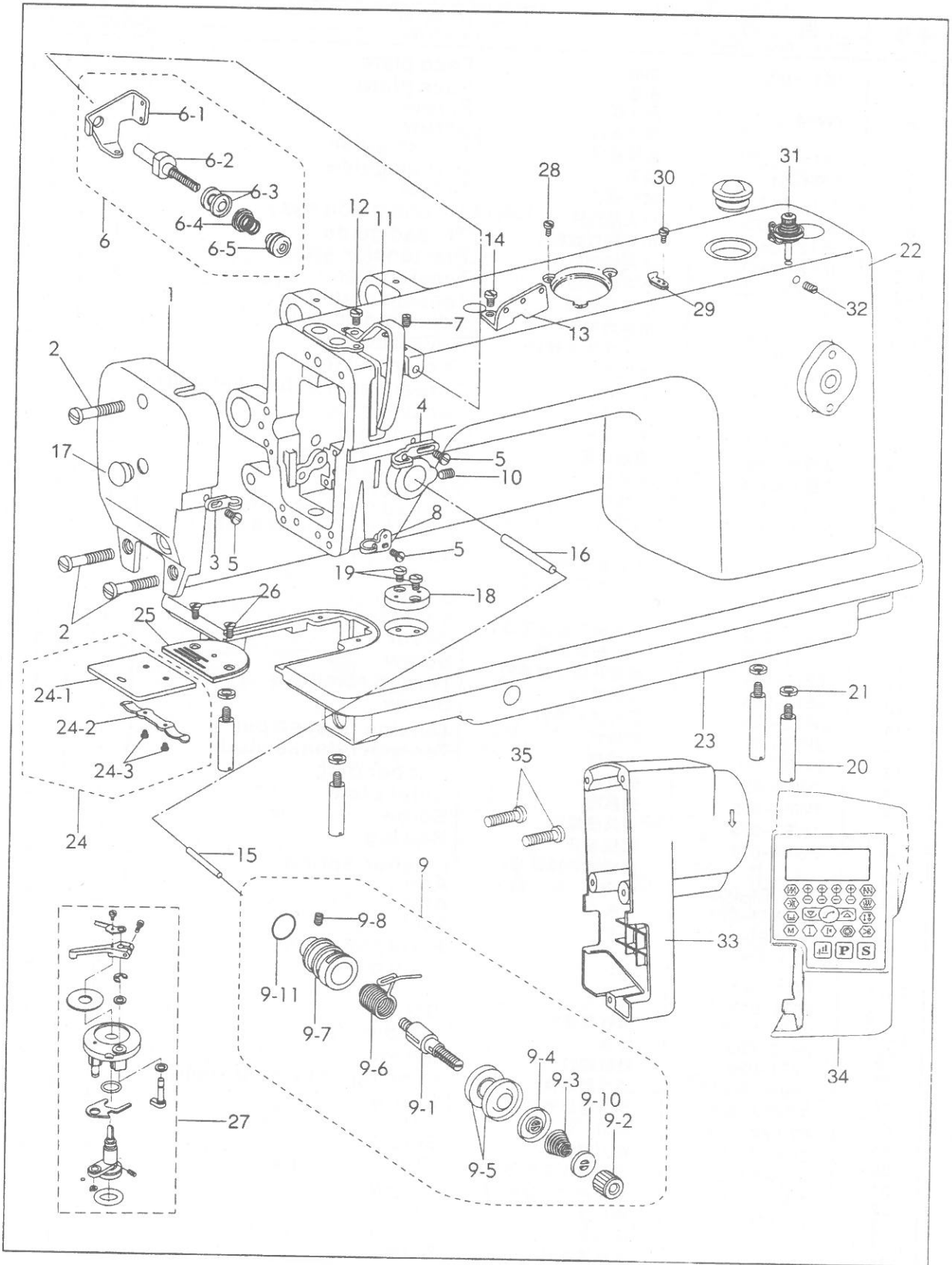


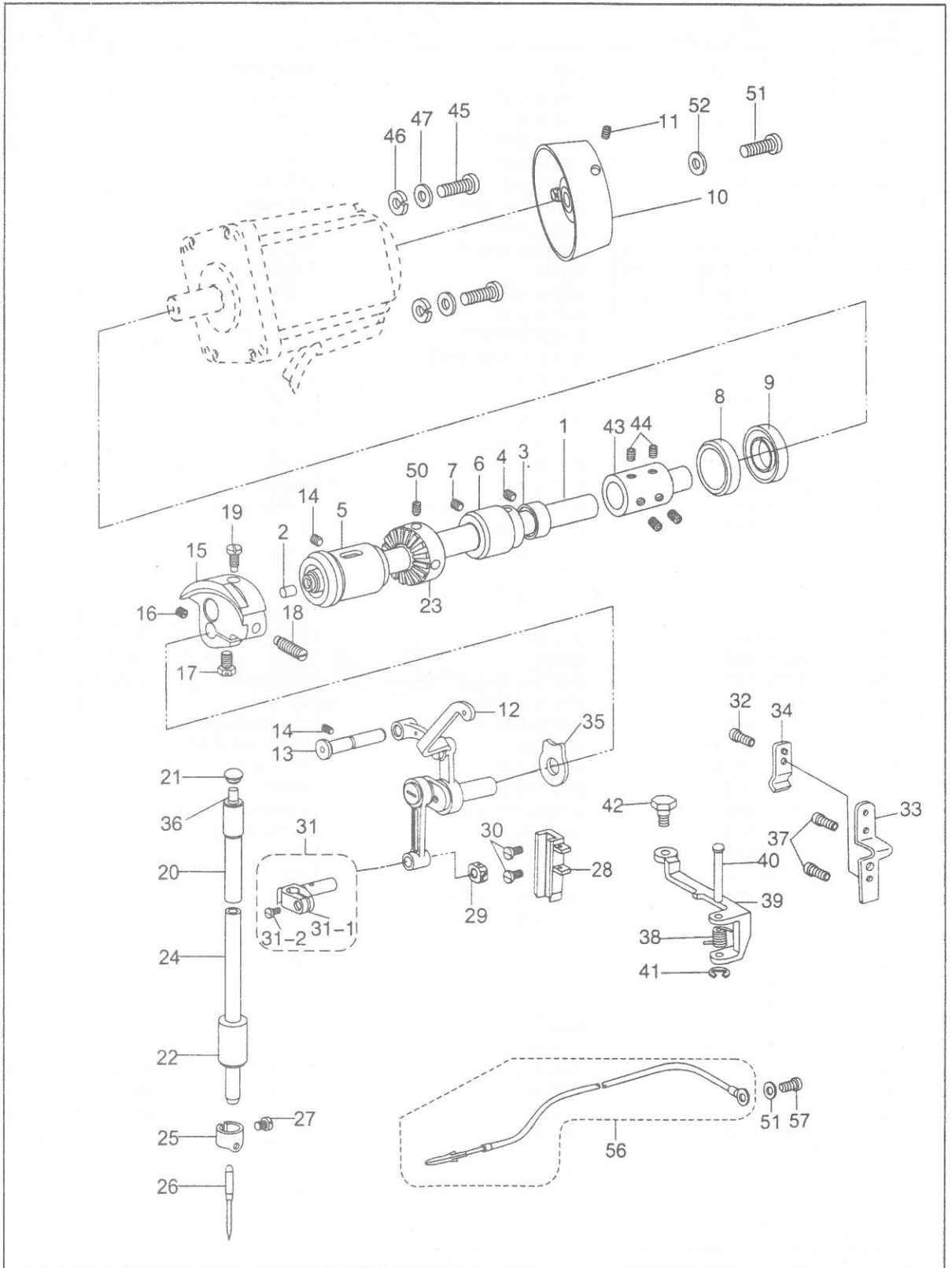
1、机壳部件 Casting mechanism



1、机壳部件 Casting mechanism

| 序号 No. | 图 号 Part Number | 零 件 名 称 Name | 数 量 Qt. | |
|-----------|--------------------|--------------------------------------|---------|-------|
| | | | 0303D | 6202D |
| 1 | 1KT1-002 | 面板 Face plate | 1 | - |
| | | 面板 Face plate | - | 1 |
| 2 | 7WF4-004 | 面板螺钉 Screw | 3 | - |
| | | 面板螺钉 Screw | - | 3 |
| 3 | 22T1-003C5 | 面板线勾 Thread guide | 1 | 1 |
| 4 | 22T1-014 | 线勾 Thread guide | 1 | 1 |
| 5 | 22T1-003C6 | 线勾螺钉 Screw | 3 | 3 |
| 6 | 36T2-006D | 小夹线组件 Thread guide assy. | 1 | 1 |
| 6-1 | 36T2-006D1 | 小夹线过线板 Thread guide | 1 | 1 |
| 6-2 | 36T2-006D2 | 小夹线螺钉 Pre-tension stud | 1 | 1 |
| 6-3 | 22T2-009E3 | 小夹线组板 Tension disc | 2 | 2 |
| 6-4 | 2KT2-011 | 小夹线弹簧 Tension spring | 1 | 1 |
| 6-5 | 36T2-006D4 | 小夹线螺母 Adjusting screw | 1 | 1 |
| 7 | 20T1-004 | 小夹线固定螺钉 Set screw | 1 | 1 |
| 8 | 7WF4-015 | 下线勾 Thread guide | 1 | 1 |
| 9 | 33T4-008C | 夹线组件 Thread tension bracket assy. | 1 | 1 |
| 9-1 | 22T1-012F1 | 夹线螺钉 Tension stud | 1 | 1 |
| 9-2 | 22T1-012F2 | 夹线螺母 Tension nut | 1 | 1 |
| 9-3 | 33T4-008C1 | 夹线弹簧 Tension spring | 1 | 1 |
| 9-4 | 22T1-012F4 | 松线板 Disc presser | 1 | 1 |
| 9-5 | 22T1-012F5 | 夹线板 Disc, tension | 2 | 2 |
| 9-6 | 22T1-012F6 | 挑线簧 Thread take-up spring | 1 | 1 |
| 9-7 | 22T1-012F7 | 夹线调节座 Thread tension bracket | 1 | 1 |
| 9-8 | 22T1-012F8 | 夹线调节座螺钉 Set screw | 1 | 1 |
| 9-10 | 22T1-012F10 | 夹线螺母止动板 Stopper | 1 | 1 |
| 9-11 | 22T1-012F11 | O型圈 O ring | 1 | 1 |
| 10 | 22T1-013 | 夹线调节座固定螺钉 Set screw | 1 | 1 |
| 11 | 1KT1-003 | 挑线杆防护罩 Cover | 1 | 1 |
| 12 | 22T2-004 | 挑线杆防护罩螺钉 Screw | 1 | 1 |
| 13 | 36T2-004 | 三孔线勾 Thread retainer | 1 | 1 |
| 14 | 36T2-005 | 三孔线勾螺钉 Screw | 1 | 1 |
| 15 | 2KT4-002 | 松线钉 Tension release pin | 1 | 1 |
| 16 | 2KT4-003 | 松线棒 Tension release stud | 1 | 1 |
| 17 | 7WF4-030 | 橡皮塞 Rubber plug | 1 | 1 |
| 18 | 7WF4-005 | 夹具座 Ruler plate | 1 | 1 |
| 19 | 1WF3-025 | 夹具座螺钉 Screw | 2 | 2 |
| 20 | 7WF4-013 | 底板撑杆 Bed leg | 4 | 4 |
| 21 | | 底板撑杆弹簧垫片 Washer, spring | 4 | 4 |
| 22 | 271WF1-001 | 机壳 Arm | 1 | - |
| | 258WF1-001 | 机壳 Arm | - | 1 |
| | 241WF1-001 | 底板 Bed | 1 | 1 |
| 23 | | 推板组件 Slide plate assy. | 1 | 1 |
| 24 | | 推板 Slide plate | 1 | 1 |
| 24-1 | 7WF4-006 | 推板簧 push the spring | 1 | 1 |
| 24-2 | 20T1-013F2 | 推板簧螺钉 Screw | 2 | 2 |
| 24-3 | 20T1-013F3 | 针板 Needle plate | 1 | 1 |
| 25 | 2KT2-003 | 针板螺钉 Screw | 1 | 1 |
| 26 | 22T1-020 | 针板螺钉 Screw | 2 | 2 |
| 27 | 199WF5-012 | 绕线器组件 winding device assembly | 1 | 1 |
| 28 | 92WF2-027 | 绕线器组件固定螺钉 Screw | 3 | 3 |
| 29 | 52WF2-043 | 切刀 sutting knife | 1 | 1 |
| 30 | 36WF2-031 | 切刀螺钉 Screw | 1 | 1 |
| 31 | 258WF1-005 | 绕线器小夹线器组件 Thread guide assy. | 2 | 2 |
| 32 | 1WF5-019 | 小夹线器固定螺钉 Screw | 1 | - |
| 33 | 258WF1-006 | 电机罩 motor cover | - | 1 |
| 34 | | 电控箱 electric cabinet | 1 | - |
| 35 | | 电机罩螺钉 Screw | 5 | 5 |

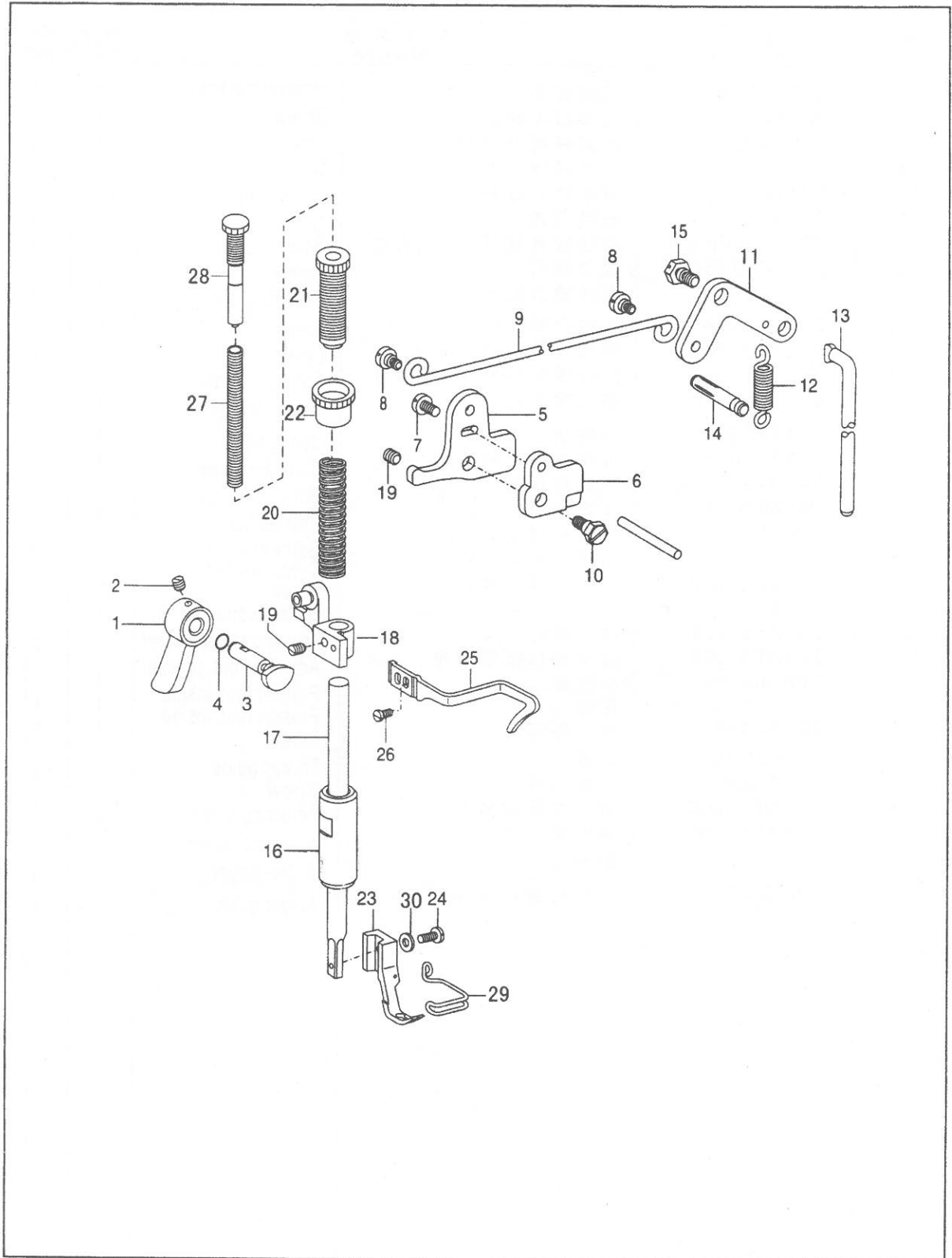
2. 针杆、挑线部件 Needle bar and thread take-up mechanism



2. 针杆、挑线部件 Needle bar and thread take-up mechanism

| 序号 No. | 图 号 Part Number | 零 件 名 称 Name | | 数 量 Qt. | | |
|-----------|--------------------|-----------------|--------------------------|---------|-------|---|
| | | | | 0303D | 6202D | |
| 1 | 271WF2-001 | 上轴 | Upper shaft | 1 | 1 | |
| 2 | 22T3-001A2 | 上轴橡皮塞 | Robber cap | 1 | 1 | |
| 3 | 22T3-002B1 | 上轴紧圈 | Collar | 1 | 1 | |
| 4 | 22T3-002B2 | 上轴紧圈螺钉 | Screw | 2 | 2 | |
| 5 | 4WF1-006A | 上轴前轴套 | Bush, L | 1 | 1 | |
| 6 | 4WF1-002 | 上轴中轴套 | Bush, M | 1 | 1 | |
| 7 | J0.0.40 | 上轴中轴套螺钉 | Set screw | 1 | 1 | |
| 8 | | 上轴后轴承 | Bush, R | 1 | 1 | |
| 9 | 258WF2-004 | 上轴后油封组件 | Oil seal | 1 | 1 | |
| 10 | 258WF2-006 | 主动轮 | Hand wheel | 1 | 1 | |
| 11 | 258WF2-007 | 主动轮螺钉 | Screw | 2 | 2 | |
| 12 | 33T1-004B | 挑线杆组件 | Thread take-up lever set | 1 | 1 | |
| 13 | 33T1-002 | 挑线连杆铰链轴 | Support shaft | 1 | 1 | |
| 14 | J0.0.5 | 挑线连杆铰链轴螺钉 | Set screw | 2 | 2 | |
| 15 | 4WF1-007A | 针杆曲柄 | Thread take-up crank | 1 | 1 | |
| 16 | 33T1-006C3 | 挑线曲柄螺钉 | Screw | 1 | 1 | |
| 17 | 22T2-005B3 | 挑线曲柄定位螺钉 | Screw | 1 | 1 | |
| 18 | 33T1-006C2 | 针杆曲柄螺钉 | Screw | 1 | 1 | |
| 19 | 20T2-007 | 针杆曲柄定位螺钉 | Screw | 1 | 1 | |
| 20 | 22T2-008 | 针杆上轴套 | Bush, U | 1 | 1 | |
| 21 | 22T2-011 | 针杆上轴套橡皮塞(φ8.8) | Rubber cap | 1 | 1 | |
| 22 | 2KT1-002 | 针杆下轴套 | Bush, D | 1 | 1 | |
| 23 | 258WF2-002 | 绕线器摩擦轮 | Screw | 1 | 1 | |
| 24 | 2KT1-001 | 针杆 | Needle bar | 1 | 1 | |
| 25 | 22T2-015 | 针杆过线环 | Thread guide | 1 | 1 | |
| 26 | | 机针 | Needle | 1 | 1 | |
| 27 | 22T2-017 | 夹针螺钉 | Set screw | 1 | 1 | |
| 28 | 2KT1-003 | 滑块槽 | Guide | 1 | 1 | |
| 29 | 33T1-013 | 针杆接头滑块 | Slide block | 1 | 1 | |
| 30 | 22T2-019 | 滑块导轨螺钉 | Screw | 2 | 2 | |
| 31 | 33T1-015H | 针杆接头组件 | Needle bar clamp assy. | 1 | 1 | |
| 31-1 | 22T8-001A8 | 针杆接头 | Needle bar clamp | 1 | 1 | |
| 31-2 | 22T8-001A9 | 针杆接头螺钉 | Set screw | 1 | 1 | |
| 32 | 2KT4-013 | 软线固定板螺钉 | Screw | 1 | 1 | |
| 33 | 2KT4-010 | 松线钢绳固定架 | Wire holder, U | 1 | 1 | |
| 34 | 2KT4-012 | 松线压板 | Wire holder, D | 1 | 1 | |
| 35 | 33T1-005 | 垫片 | Washer | 1 | 1 | |
| 36 | 22T1-010 | 针杆上轴套毛毡 | Felt | 1 | 1 | |
| 37 | 2KT4-011 | 松线钢绳固定架螺钉 | Screw | 2 | 2 | |
| 38 | 2KT4-006 | 铰链弹簧 | Spring | 1 | 1 | |
| 39 | 2KT4-004 | 松线铰链 | Tension release plate | 1 | 1 | |
| 40 | 2KT4-005 | 铰链销 | Tension release pin | 1 | 1 | |
| 41 | | 开口挡圈 | Retaining ring | 1 | 1 | |
| 42 | 2KT4-009 | 铰链螺钉 | Screw | 1 | 1 | |
| 43 | 258WF2-003 | 联轴器 | Connect block | 1 | 1 | |
| 44 | 19WF3-005 | 联轴器螺钉 | Screw | 4 | 4 | |
| 45 | | 电机安装螺钉 | Screw | GB/T6 | 4 | 4 |
| 46 | | 弹簧垫片 | Washer | GB/T8 | 4 | 4 |
| 47 | | 平垫片 | Washer | GB/T9 | 4 | 4 |
| 48 | 2KT8-001 | 地线组件 | Ground wire assy. | 1 | 1 | |
| 49 | 2KT5-005 | 地线螺钉 | Screw | 1 | 1 | |
| 50 | 6K2-043 | 磨擦轮螺钉 | Screw | 2 | 2 | |
| 51 | 18WF4-023 | 磁钢螺钉 | Screw | 1 | 1 | |
| 52 | 22T1-007 | 垫片 | Washer | 1 | 1 | |

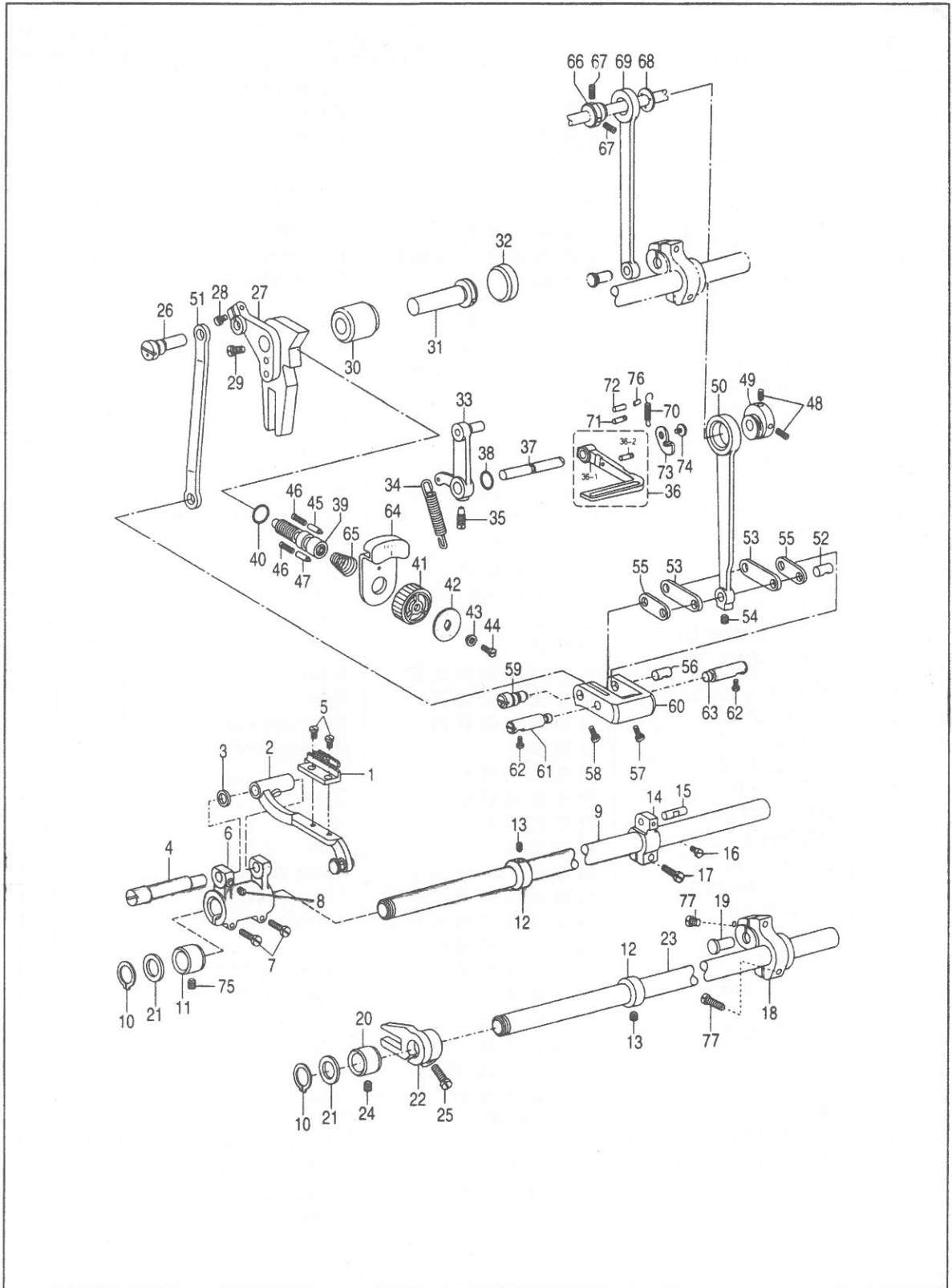
3. 压脚部件 Presser foot mechanism



3. 压脚部件 Presser foot mechanism

| 序号 No. | 图 号 Part Number | 零件名称 Name | | 数量 Qt. | |
|-----------|-------------------------|--------------|--------------------------|--------|-------|
| | | | | 0303D | 6202D |
| 1 | 33T3-003 | 压脚扳手 | Presser bar lifter | 1 | 1 |
| 2 | 22T1-011 | 压脚扳手螺钉 | Screw | 1 | 1 |
| 3 | 4WF3-002 | 压紧杆提升凸轮 | Lifter crank | 1 | 1 |
| 4 | | 压紧杆提升凸轮油封 | O ring | 1 | 1 |
| 5 | 22T7-004B _{1a} | 膝控提升杠杆(左) | Lifter lever | 1 | 1 |
| 6 | 2KT4-001 | 松线凸轮 | Guide plate | 1 | 1 |
| 7 | 22T7-004B _{1c} | 膝控提升杠杆(左)螺钉 | Screw | 1 | 1 |
| 8 | 22T7-004B ₂ | 铰链螺钉 | Screw | 2 | 2 |
| 9 | 1KT4-004 | 膝控提升拉杆 | Collecting rod | 1 | 1 |
| 10 | 22T7-005A | 松线凸轮螺钉 | Screw | 1 | 1 |
| 11 | 22T7-007 _{c1} | 膝控提升杠杆(右) | Lever | 1 | 1 |
| 12 | 22T7-007 _{c2} | 膝控提升杠杆(右)弹簧 | Spring, extension | 1 | 1 |
| 13 | 4WF3-001 | 膝控提升连杆 | Knee lifter bar | 1 | 1 |
| 14 | 22T7-008 | 弹簧销 | Spring hook | 1 | 1 |
| 15 | 22T7-005 _B | 膝控提升杆杆(右)螺钉 | Shoulder screw | 1 | 1 |
| 16 | 34T3-305 | 压紧杆轴套 | Bush | 1 | 1 |
| 17 | 241WF5-001 | 压紧杆 | Presser bar | 1 | 1 |
| 18 | 7WF3-001 | 压紧杆导架 | Guide bracket | 1 | - |
| | | 压紧杆导架 | Guide bracket | - | 1 |
| 19 | 61-04-01/B308 | 压紧杆导架螺钉 | Screw | 1 | 1 |
| 20 | 20T4-002 | 压紧杆弹簧 | Spring, compression | 1 | 1 |
| 21 | 233WF6-002 | 调压螺钉 | Adjusting screw, presser | 1 | 1 |
| 22 | 233WF6-003 | 调压螺钉锁紧螺母 | Adjusting nut, presser | 1 | 1 |
| 23 | 7WF3-003 | 小压脚 | Presser foot, inside | 1 | 1 |
| | | 压脚 | Presser foot, inside | 1 | 1 |
| 24 | 22T7-015 | 小压脚螺钉 | Screw | 1 | 1 |
| 25 | 7WF3-002 | 大线勾 | Thread guide | 1 | 1 |
| 26 | 33T3-006 | 大线勾螺钉 | Screw | 1 | 1 |
| 27 | 233WF6-005 | 辅助调压弹簧 | Adjusting spring | 1 | 1 |
| 28 | 233WF6-004 | 辅助调压螺钉 | Adjusting screw | 1 | 1 |
| 29 | | 防护勾 | Safety finger | 1 | 1 |
| 30 | 7WF3-004 | 小压脚螺钉垫片 | Finger guard | - | 1 |
| | | | | 1 | 1 |

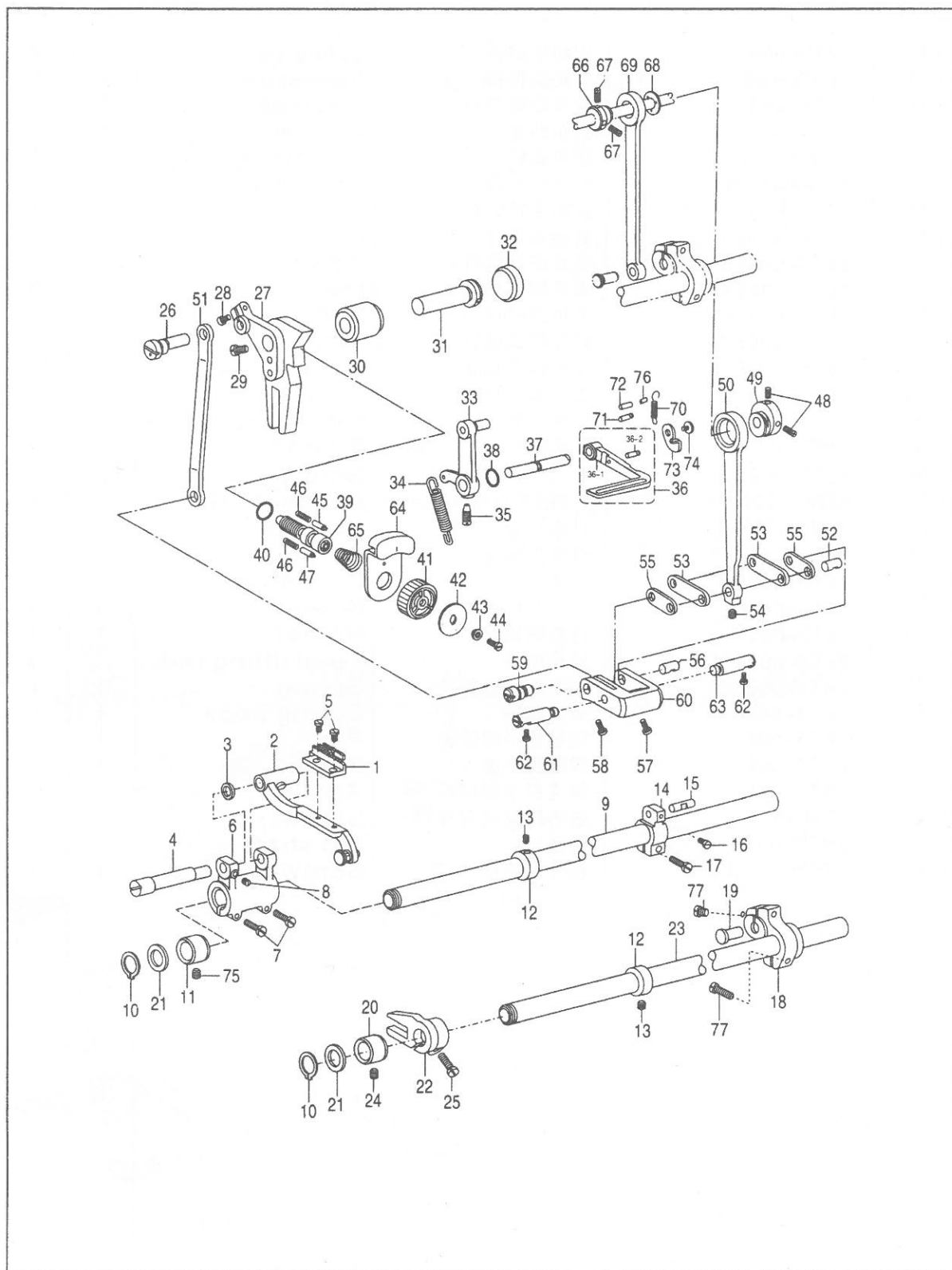
4. 送料部件 Feed mechanism



4. 送料部件 Feed mechanism

| 序号 No. | 图号 Part Number | 零件名称 Name | | 数量 Qt. | |
|-----------|---------------------------------------|--------------|-------------------------------|--------|-------|
| | | | | 0303D | 6202D |
| 1 | 2KT3-001 | 送布牙 | Feed dog | 1 | 1 |
| 2 | 36T4-001A1a1 | 牙架小组件 | Feed bar | 1 | 1 |
| 3 | 51T5-001A ₆ | 牙架垫圈 | Washer | 1 | 1 |
| 4 | 36T4-001A ₂ | 牙架曲柄偏心轴 | Shaft | 1 | 1 |
| 5 | J0.0.50 | 送布牙螺钉 | Screw | 2 | 2 |
| 6 | 4WF2-002 | 牙架曲柄 | Feed rock arm | 1 | 1 |
| 7 | 61-04-01/B504 | 牙架曲柄螺钉 | Screw | 2 | 2 |
| 8 | 22T2-019 | 牙架曲柄偏心轴螺钉 | Screw | 1 | 1 |
| 9 | 81WF3-003 | 送布轴 | Feed shaft | 1 | 1 |
| 10 | | | | | |
| 11 | | 轴用弹性挡圈 | Retaining ring | 2 | 2 |
| 12 | 22T6-004 | 送布轴前轴套 | Bush, L | 1 | 1 |
| 13 | 22T3-002B ₁ | 抬牙、送布轴紧圈 | Collar | 2 | 2 |
| 14 | 22T3-002B ₂ | 紧圈螺钉 | Set screw | 4 | 4 |
| 15 | 4WF2-006 | 送布轴曲柄(右) | Feed rocker arm | 1 | 1 |
| 16 | 82T2-003C1a10-2 | 曲柄连杆短销 | Stud | 1 | 1 |
| 17 | 36T5-008E ₅ | 曲柄连杆短销螺钉 | Set screw | 1 | 1 |
| 18 | 22T6-008D ₃ | 送布轴曲柄(右)螺钉 | Screw | 1 | 1 |
| 19 | 68WF3-011 | 抬牙后曲柄 | Feed lifting arm | 1 | 1 |
| 20 | 22T6-007 | 抬牙轴曲柄铰链轴 | Pin | 1 | 1 |
| 21 | 22T6-012 | 抬牙轴前轴套 | Bush, L | 1 | 1 |
| 22 | 51T5-013 | 抬牙、送布轴前轴套垫圈 | Washer | 2 | 2 |
| 23 | 36T4-018H ₁ D ₁ | 抬牙叉 | Feed lifting arm | 1 | 1 |
| 24 | 7WF2-001 | 抬牙轴 | Shaft | 1 | 1 |
| 25 | J0.0.5 | 抬牙轴前轴套螺钉 | Screw | 1 | 1 |
| 26 | 22T6-008D ₃ | 抬牙叉夹紧螺钉 | Screw | 1 | 1 |
| 27 | 4WF2-012 | 针距调节连杆销 | Connecting stud | 1 | 1 |
| 28 | 7WF2-012 | 针距座 | Feed regulator | 1 | 1 |
| 29 | 20T2-031 | 针距座长螺钉 | Screw, L | 1 | 1 |
| 30 | 22T5-010D ₄ | 针距座短螺钉 | Screw, S | 1 | 1 |
| 31 | 258WF4-002 | 针距座衬套 | Bush | 1 | 1 |
| 32 | 22T5-004 | 针距座轴 | Shaft | 1 | 1 |
| 33 | 258WF4-003 | 橡皮塞(Φ 15.7) | Rubber cap | 1 | 1 |
| 34 | 7WF2-009 | 倒缝操纵杆曲柄组件 | Pin assy. Lever | 1 | 1 |
| 35 | 1KT3-002 | 倒缝操纵杆曲柄弹簧 | Spring, extension | 1 | 1 |
| 36 | 22T5-013 | 操纵杆曲柄螺钉 | Screw | 1 | 1 |
| 36-1 | 2KT3-003 | 倒缝扳手组件 | Reverse stitching lever assy. | 1 | 1 |
| 36-2 | 2KT3-003a | 倒缝扳手 | Reverse stitching lever | 1 | 1 |
| 37 | 2KT3-003b | 倒缝扳手销 | Spring hook pin | 1 | 1 |
| 38 | 2KT3-002 | 倒缝扳手轴 | Shaft | 1 | 1 |
| 39 | | 倒缝扳手轴O型圈 | O ring | 1 | 1 |
| 40 | 36T5-007D ₁ | 针距调节螺杆 | Adjusting screw | 1 | 1 |
| 41 | 33T2-030-A | O型橡胶圈 | O ring | 1 | 1 |
| 42 | 36T5-007D ₂ | 针距盘 | Stitch length dial | 1 | 1 |
| 43 | 4WF2-004A | 针距标盘 | Stitch length plate | 1 | 1 |
| 44 | 36T5-007D ₄ | 标盘螺钉衬套 | Support bush | 1 | 1 |
| 45 | 36T5-007D ₅ | 针距盘螺钉 | Screw | 1 | 1 |
| | | 止动销 | Positioning pin | 1 | 1 |

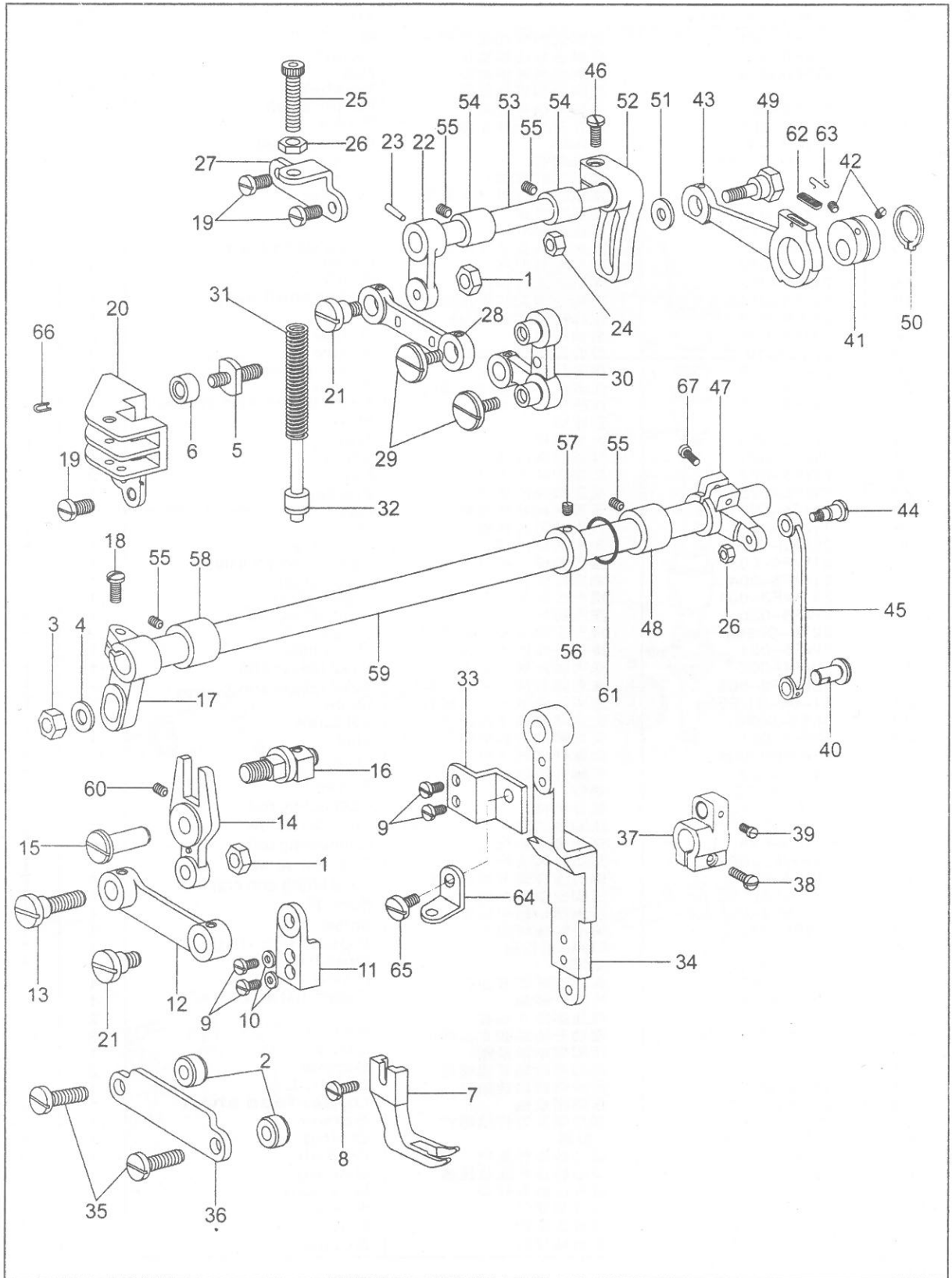
4. 送料部件 Feed mechanism



4. 送料部件 Feed mechanism

| 序号 No. | 图 号 Part Number | 零 件 名 称 Name | | 数 量 Qt. | |
|-----------|------------------------|-----------------|----------------------|---------|-------|
| | | | | 0303D | 6202D |
| 46 | 22T5-009 | 止动销弹簧 | Spring | 2 | 2 |
| 47 | 7WF2-006 | 针距盘挡销 | Stopper pin | 1 | 1 |
| 48 | 36T3-003D ₂ | 送布凸轮螺钉 | Set screw | 3 | 3 |
| 49 | 36T5-008E ₁ | 送布凸轮 | Feed cam | 1 | 1 |
| 50 | 4WF2-009A | 送布连杆 | Feed connecting rod | 1 | 1 |
| 51 | 4WF2-009B | 针距调节连杆 | Connecting rod | 1 | 1 |
| 52 | 82T2-003C1a10-1 | 曲柄连杆长销 | Stud | 1 | 1 |
| 53 | 36T5-008E4H02 | 曲柄长连杆 | Link | 2 | 2 |
| 54 | 36T5-008E5 | 送布连杆螺钉 | Set screw | 1 | 1 |
| 55 | 36T5-008E4H01 | 曲柄短连杆 | Link | 2 | 2 |
| 56 | 36T5-008E6 | 曲柄连杆短销 | Shaft | 1 | 1 |
| 57 | 36T5-008E7 | 短连杆销螺钉 | Screw | 1 | 1 |
| 58 | 36T5-008E8 | 连杆偏心轴螺钉 | Screw | 1 | 1 |
| 59 | 36T5-008E9 | 连杆偏心轴 | Shaft | 1 | 1 |
| 60 | 36T5-008E10 | 针距调节曲柄 | Feed regulator crank | 1 | 1 |
| 61 | 5WF1-002 | 针距调节曲柄定位销(左) | Pin shaft, L | 1 | 1 |
| 62 | 22T6-008D3 | 左、右定位销螺钉 | Screw | 2 | 2 |
| 63 | 5WF1-001 | 针距调节曲柄定位销(右) | Pin shaft, R | 1 | 1 |
| 64 | 7WF2-005 | 针距按键 | Stopper | 1 | 1 |
| 65 | 36T5-011 | 针距按键簧 | Spring | 1 | 1 |
| 66 | 36T3-003D ₁ | 抬牙凸轮 | Eccentric wheel | 1 | 1 |
| 67 | 36T3-003D ₂ | 抬牙凸轮螺钉 | Screw | 3 | 3 |
| 68 | 36T3-004 | 凸轮隔离片 | Holder | 1 | 1 |
| 69 | 22T3-009D1C | 抬牙连杆 | Feed lifting rod | 1 | 1 |
| 70 | 2KT3-008 | 倒缝扳手拉簧 | Spring | 1 | 1 |
| 71 | 2KT3-009 | 弹簧挂销 | Spring hook | 1 | 1 |
| 72 | 2KT3-006 | 倒缝扳手限位销 | Pin | 1 | 1 |
| 73 | 2KT3-004 | 倒缝扳手板 | Plate | 1 | 1 |
| 74 | 2KT3-005 | 倒缝扳手轴螺钉 | Screw | 1 | 1 |
| 75 | J0.0.35 | 送布轴前轴套螺钉 | Screw | 1 | 1 |
| 76 | 2KT3-007 | 销套 | Pin shaft | 1 | 1 |
| 77 | 17WF4-021 | 抬牙右曲柄螺钉 | Screw | 1 | 1 |

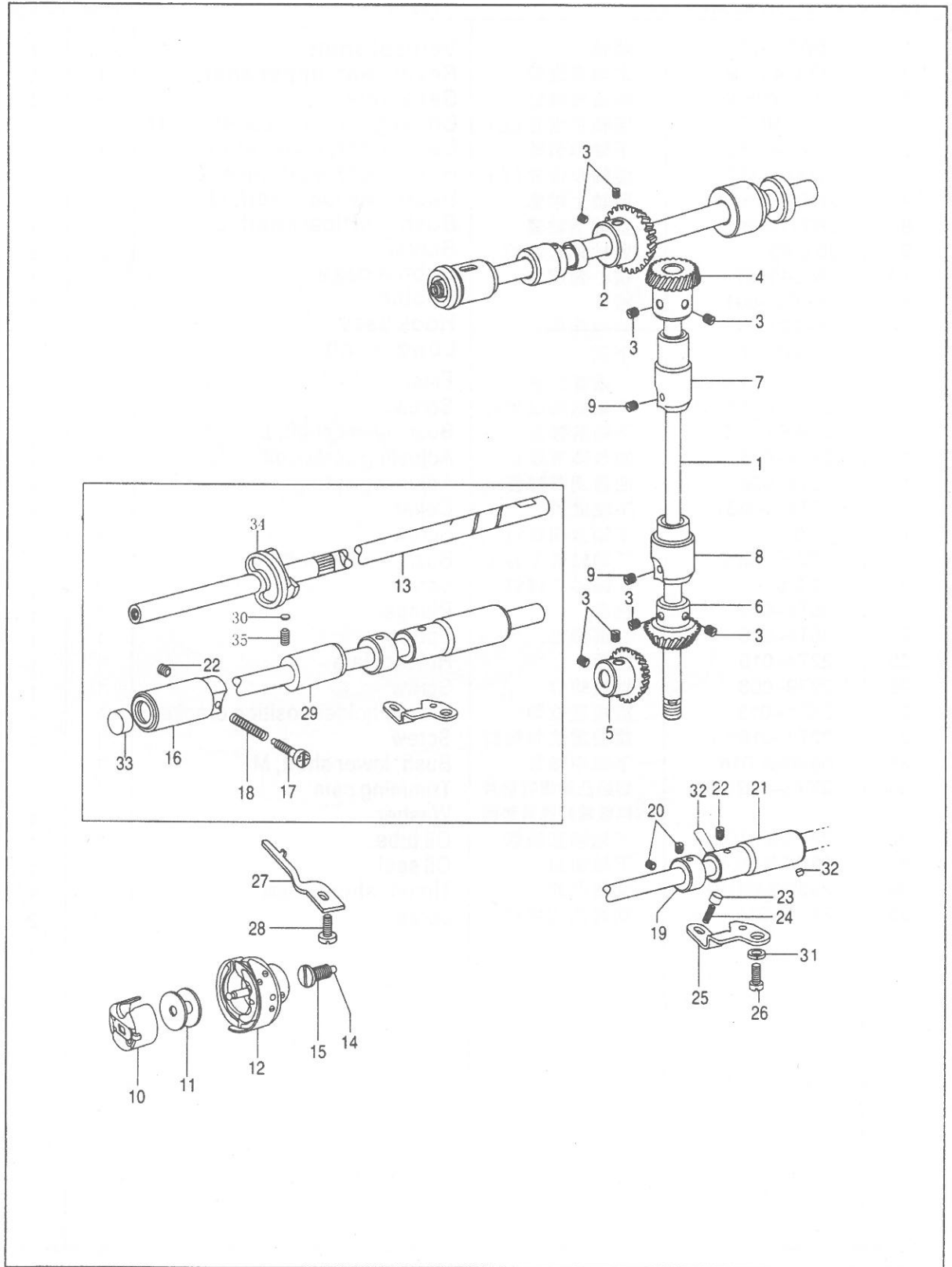
5、上送料部件 Upper feed mechanism



5、上送料部件 Upper feed mechanism

| 序号 No. | 图号 Part Number | 零件名称 Name | | 数量 Qt. | |
|-----------|------------------------|--------------|---------------------------|--------|-------|
| | | | | 0303D | 6202D |
| 1 | 7WF5-001 | 压脚送料变动连接螺母 | Nut | 2 | - |
| 2 | 7WF5-002 | 压脚连杆压板垫块 | Collar | 2 | - |
| 3 | 7WF5-003 | 压脚曲柄连接螺母 | Nut | 1 | - |
| 4 | | 压脚曲柄连接垫圈 | Washer | 1 | - |
| 5 | 7WF5-004 | 送料曲柄导柱轴 | Roller shaft | 1 | - |
| 6 | 7WF5-005 | 提升压脚导柱滚柱 | Roller | 1 | - |
| 7 | 11WF5-001 | 摆压脚 | Walking foot | 1 | - |
| 8 | 61-04-01/B316 | 压脚螺钉 | Screw | 1 | - |
| 9 | 7WF5-008 | 摆动连杆座螺钉 | Screw | 4 | - |
| 10 | | 摆动连杆座螺钉弹簧垫圈 | Washer | 2 | - |
| 11 | 7WF5-009 | 摆压脚连杆 | Clamper | 1 | - |
| 12 | 7WF5-010 | 压脚送料变动连接螺钉 | Link | 1 | - |
| 13 | 7WF5-011 | 摆压脚叉型杆 | Shoulder screw | 1 | - |
| 14 | 7WF5-012 | 摆压脚叉型杆销 | Lever | 1 | - |
| 15 | 7WF5-013 | 压脚送料变动曲柄轴组件 | Shaft | 1 | - |
| 16 | 7WF5-014A | 压脚摆动前曲柄 | Roller shaft assy. | 1 | - |
| 17 | 233WF5-023 | 前曲柄螺钉 | Crank | 1 | - |
| 18 | 1WF4-032 | 提升压脚导位板螺钉 | Screw | 2 | - |
| 19 | 22T2-019 | 提升压脚导位板 | Screw | 4 | - |
| 20 | 7WF5-018 | 压脚送料曲柄连杆螺钉 | Lever guide | 1 | - |
| 21 | 7WF5-019 | 压脚升降前曲柄 | Screw | 2 | - |
| 22 | 7WF5-020 | 圆锥销 | Feed lifting arm crank, L | 1 | - |
| 23 | | 六角螺母 | Pin | 1 | - |
| 24 | 7WF5-050 | 摆压脚调压螺钉 | Nut | 1 | - |
| 25 | 7WF5-021 | 摆压脚调压螺母 | Screw | 1 | - |
| 26 | 7WF5-022 | 摆压脚调压螺钉架 | Nut | 2 | - |
| 27 | 7WF5-023 | 压脚送料曲柄连杆 | Bracket | 1 | - |
| 28 | 7WF5-024 | 压脚送料曲柄螺钉 | Link | 1 | - |
| 29 | 7WF5-025 | 压脚送料曲柄 | Screw | 2 | - |
| 30 | 258F3-005 | 摆压脚调压杆弹簧 | Feed lever | 1 | - |
| 31 | 81WF6-003 | 调压杆弹簧导柱 | Spring, compression | 1 | - |
| 32 | 81WF6-004 | 提升压脚导柱定位板 | Guide shaft | 1 | - |
| 33 | 241WF3-001 | 摆压脚杆 | Holder plate | 1 | - |
| 34 | 7WF5-030 | 提升压脚连接压板螺钉 | Connecting rod | 1 | - |
| 35 | 22T6-008D ₃ | 提升压脚连接压板 | Screw | 2 | - |
| 36 | 7WF5-031 | 送布轴曲柄(中) | Rod guide | 1 | - |
| 37 | 5WF4-002 | 送布轴曲柄(中) | Feed rocker arm | 1 | - |
| 38 | 258WF3-003 | 送布轴曲柄(中)螺钉 | Feed rocker arm | - | - |
| 39 | 36T5-008E ₃ | 大连杆曲柄连接销钉 | Screw | 1 | - |
| 40 | 5WF4-001 | 大连杆曲柄连接销 | Set screw | 1 | - |
| 41 | 258WF3-004 | 压脚升降偏心轮 | Stud | 1 | - |
| 42 | 7WF5-032 | 连杆组件 | Eccentric wheel | - | - |
| 43 | 22T2-005B ₃ | 压脚摆动后曲柄连杆螺钉 | Screw | 2 | - |
| 44 | 7WF5-034 | 摆压脚大连杆 | Connecting rod | 1 | - |
| 45 | 7WF5-038 | 摆压脚大连杆 | Shoulder screw | 1 | - |
| 46 | 258WF3-002 | 偏心连杆调节曲柄螺钉 | Connecting rod | 1 | - |
| 47 | 7WF5-039 | 压脚摆动后曲柄 | Shoulder screw | 1 | - |
| 48 | 241WF3-003 | 压脚摆动轴中轴套 | Feed lifting arm crank, R | 1 | - |
| 49 | 7WF5-042 | 偏心轮连杆螺钉 | Bush, M | 1 | - |
| 50 | | 轴用C型挡圈 | Screw | 1 | - |
| 51 | 7WF5-049 | 垫圈 | Retaining ring, C | 1 | - |
| 52 | 7WF5-043 | 偏心连杆调节曲柄 | Washer | 1 | - |
| 53 | 7WF5-044 | 压脚升降轴 | Feed arm | 1 | - |
| 54 | 7WF5-045 | 摆压脚提升轴套 | Feed lifting shaft | 1 | - |
| 55 | 61-04-01/B308 | 摆动升降轴套支头螺钉 | Bush | 2 | - |
| 56 | 22T3-002B ₁ | 压脚摆动轴紧圈 | Screw | 3 | - |
| 57 | 22T3-002B ₂ | 压脚摆动轴紧圈螺钉 | Collar | 1 | - |
| 58 | 1KT2-004 | 压脚摆动轴前轴套 | Screw | 1 | - |
| 59 | 241WF3-004 | 压脚摆动轴 | Screw | 2 | - |
| 60 | 7WF5-048 | 摆压脚叉型杆销螺钉 | Bush, L | 1 | - |
| 61 | 33T2-030-A | O型圈 | Upper feed shaft | 1 | - |
| 62 | 7WF5-035 | 偏心轮连杆油毡 | Screw | 1 | - |
| 63 | 1WF5-024 | 偏心轮连杆油毡压簧 | O ring | 1 | - |
| 64 | 241WF3-002 | 提升压脚导柱架 | Oil felt | 1 | - |
| 65 | 241WF3-006 | 导柱架螺钉 | Spring | 1 | - |
| 66 | 1WF5-024 | 弹性圆锥销 | Bracket | 1 | - |
| 67 | 16WF3-031 | 后曲柄螺钉 | Screw | 1 | - |
| | | | Pin | 2 | - |
| | | | Screw | 1 | - |

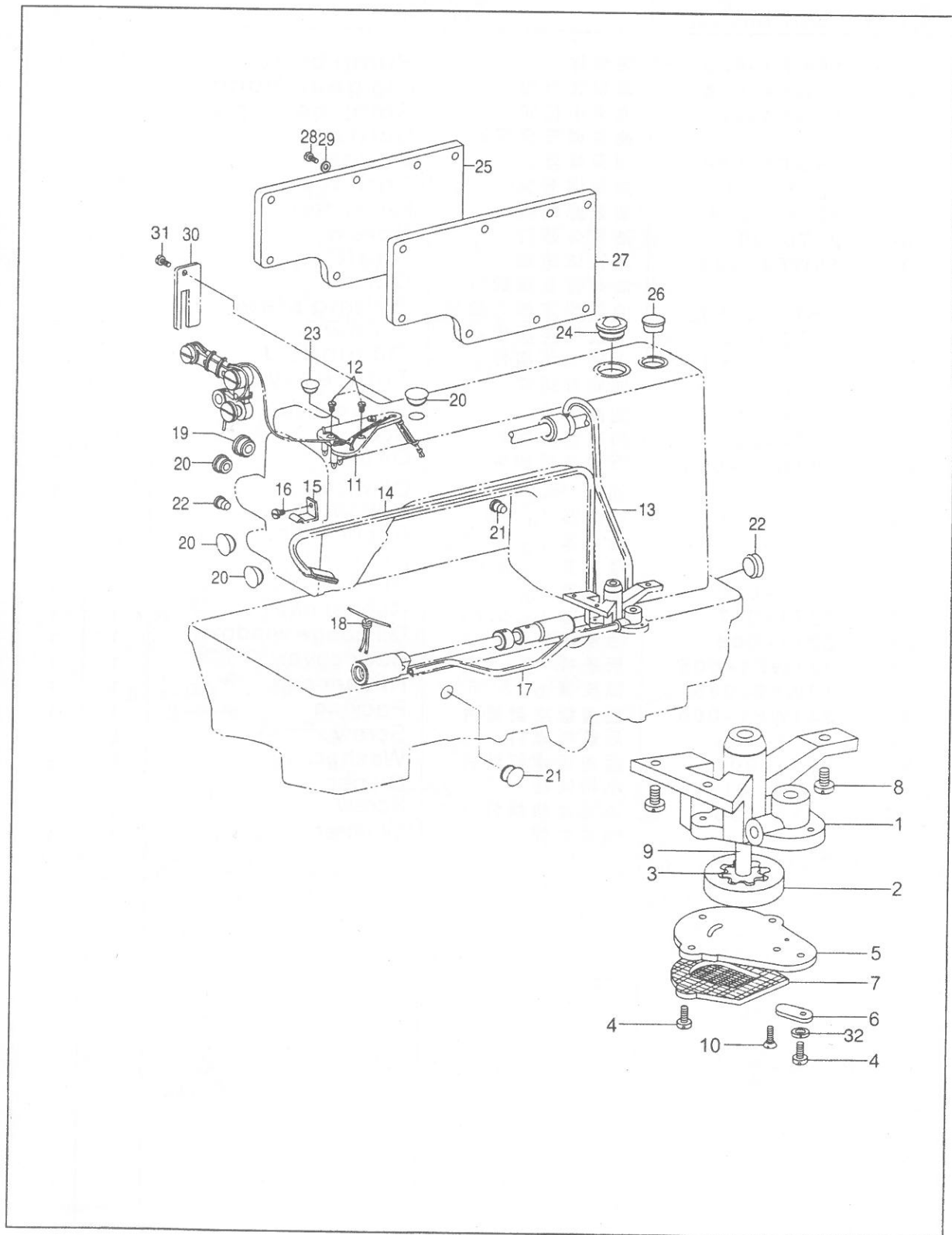
6. 旋梭部件 Hook mechanism



6. 旋梭部件 Hook mechanism

| 序号 No. | 图 号 Part Number | 零件名称 Name | | 数量 Qt. | |
|-----------|--------------------|--------------|--------------------------------|--------|-------|
| | | | | 0303D | 6202C |
| 1 | 15WF1-001 | 竖轴 | Vertical shaft | 1 | 1 |
| 2 | ZOA140379 | 上轴伞齿轮 | Bevel gear, upper shaft | 1 | 1 |
| 3 | 22T2-005B3 | 伞齿轮螺钉 | Set screw | 8 | 8 |
| 4 | ZOA140380 | 竖轴伞齿轮(上) | Bevel gear, vertical shaft, U | 1 | 1 |
| 5 | ZOA140383 | 下轴伞齿轮 | Bevel gear, lower shaft | 1 | 1 |
| 6 | ZOA140382 | 竖轴伞齿轮(下) | Bevel gear, vertical shaft, L | 1 | 1 |
| 7 | 2KT1-015 | 竖轴上轴套 | Bush, vertical shaft, U | 1 | 1 |
| 8 | 2KT1-008 | 竖轴下轴套 | Bush, vertical shaft, L | 1 | 1 |
| 9 | J0.0.40 | 竖轴轴套螺钉 | Screw | 2 | 2 |
| 10 | 151845001 | 梭心套组件 | Bobbin case | 1 | 1 |
| 11 | 24WF2-001 | 梭心 | Bobbin | 1 | 1 |
| 12 | 159793901 | 旋梭组件 | Hook assy. | 1 | 1 |
| 13 | 122WF3-001 | 下轴 | Lower shaft | 1 | 1 |
| 14 | 22T4-001A1a2 | 下轴滤油塞 | Filter | 1 | 1 |
| 15 | 22T4-001A1a1 | 下轴滤油塞螺钉 | Screw | 1 | 1 |
| 16 | 68WF3-015 | 下轴前轴套 | Bush, lower shaft, L | 1 | 1 |
| 17 | 22T4-005 | 油量调节螺钉 | Adjusting screw, oil | 1 | 1 |
| 18 | 22T4-006 | 油量调节弹簧 | Adjusting spring | 1 | 1 |
| 19 | 22T4-002B1 | 下轴紧圈 | Collar | 1 | 1 |
| 20 | J0.0.35 | 下轴紧圈螺钉 | Screw | 2 | 2 |
| 21 | 68WF3-002 | 下轴轴套(右) | Bush, lower shaft, R | 1 | 1 |
| 22 | J0.0.5 | 下轴轴套螺钉 | Screw | 2 | 2 |
| 23 | 36T4-015 | 柱塞 | Plunger | 1 | 1 |
| 24 | 36T4-016 | 柱塞弹簧 | Spring | 1 | 1 |
| 25 | 22T4-010 | 挡板 | Holder plate | 1 | 1 |
| 26 | 22T9-006 | 挡板螺钉 | Screw | 1 | 1 |
| 27 | 2KT1-013 | 旋梭定位勾 | B/case holder position bracket | 1 | 1 |
| 28 | 22T4-015 | 旋梭定位勾螺钉 | Screw | 1 | 1 |
| 29 | 68WF3-016 | 下轴中轴套 | Bush, lower shaft, M | 1 | 1 |
| 30 | 2KT5-032 | 切线凸轮螺钉垫片 | Trimming cam | 1 | 1 |
| 31 | | 挡板螺钉弹簧垫圈 | Washer | 1 | 1 |
| 32 | 22T4-007C2 | 下轴轴套油管 | Oil tube | 1 | 1 |
| 33 | 68WF3-014 | 下轴油封 | Oil seal | 1 | 1 |
| 34 | 233WF4-010 | 切线凸轮 | Thred shear cam | 1 | 1 |
| 35 | 2KT5-031 | 切线凸轮螺钉 | Screw | 2 | 2 |

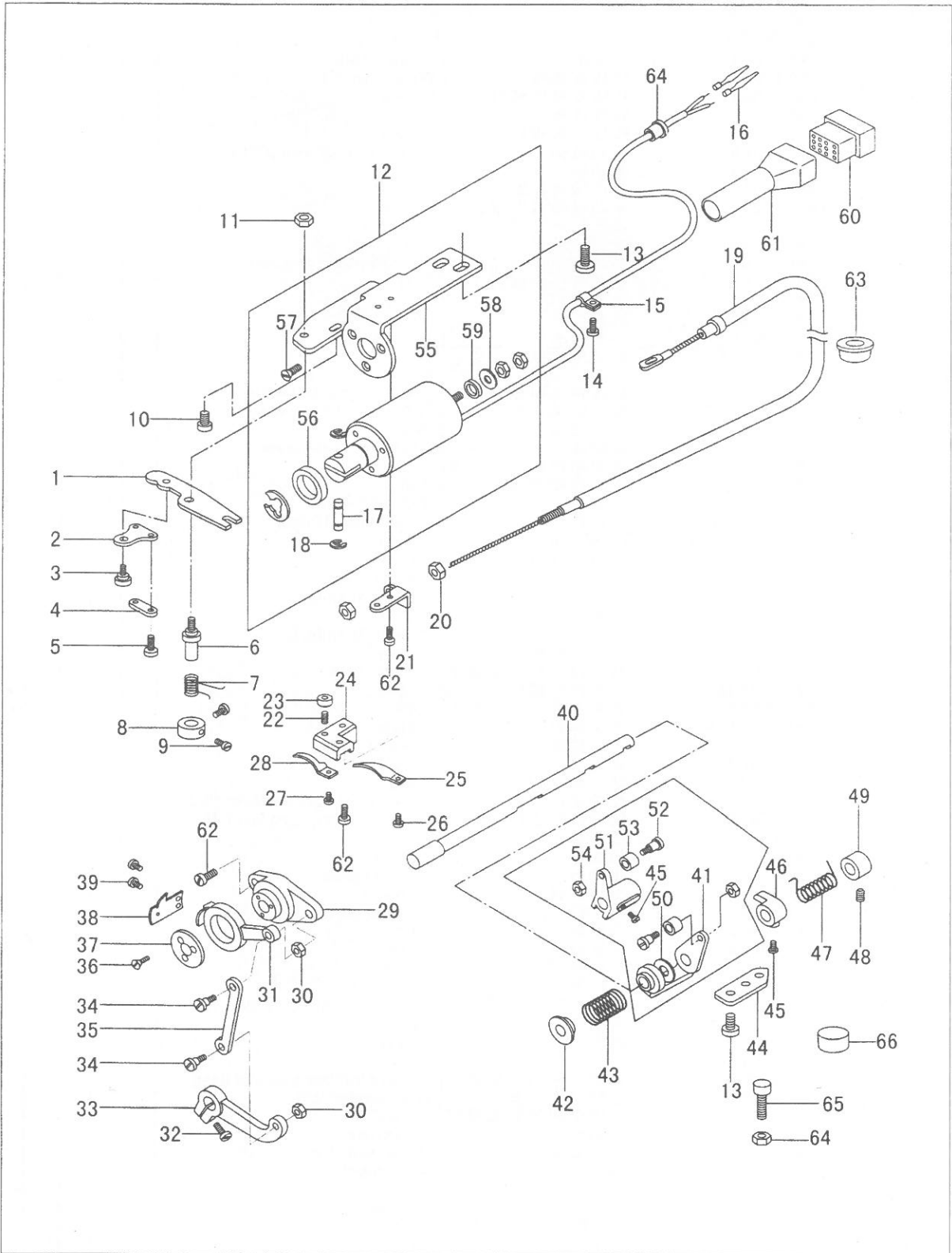
7. 供油润滑部件 Lubrication mechanism



7. 供油润滑部件 Lubrication mechanism

| 序号 No. | 图 号 Part Number | 零 件 名 称 Name | | 数 量 Qt. | |
|-----------|--------------------|-----------------|------------------|---------|-------|
| | | | | 0303D | 6202D |
| 1 | 15WF4-003 | 油泵体 | Pump body | 1 | 1 |
| 2 | 15WF4-006 | 油泵大齿轮 | Big gear, pump | 1 | 1 |
| 3 | 15WF4-007 | 油泵小齿轮 | Small gear, pump | 1 | 1 |
| 4 | | 油泵调节板螺钉 | Screw | 3 | 3 |
| 5 | 15WF4-004 | 油泵体盖板 | Cover | 1 | 1 |
| 6 | 22T8-007 | 油泵调节板 | Throat plate | 1 | 1 |
| 7 | 22T8-008A | 油泵滤网组件 | Filter set | 1 | 1 |
| 8 | 22T8-009 | 油泵体螺钉 | Screw | 3 | 3 |
| 9 | 15WF4-005 | 油泵体短轴 | Shaft | 1 | 1 |
| 10 | | 油泵体盖板螺钉 | Screw | 2 | 2 |
| 11 | 7WF4-016 | 油线固定板大组件 | Setting plate | 1 | 1 |
| 12 | 22T8-012 | 油线固定板螺钉 | Screw | 2 | 2 |
| 13 | 22T8-013D | 上轴油管组件 | Oil tube, U | 1 | 1 |
| 14 | 242WF1-004 | 回油管组件 | Tube assy. | 1 | 1 |
| 15 | 22T8-016 | 回油管夹 | Tube carrier | 1 | 1 |
| 16 | 20T4-006 | 回油管夹螺钉 | Screw | 1 | 1 |
| 17 | 122WF5-001 | 下轴油管组件 | Oil tube | 1 | 1 |
| 18 | | 油线 | Oil wick | 1 | 1 |
| 19 | 22T1-003C3 | 橡皮塞 (Φ 19) | Rubber cap | 1 | 1 |
| 20 | 22T1-003C4 | 橡皮塞 (Φ 11.8) | Rubber cap | 4 | 4 |
| 21 | 22T1-015 | 橡皮塞 (Φ 8.8) | Rubber cap | 2 | 2 |
| 22 | 22T1-016 | 橡皮塞 (Φ 27) | Rubber cap | 1 | 1 |
| 23 | 22T1-017 | 橡皮塞 (Φ 5.7) | Rubber cap | 1 | 1 |
| 24 | 22T1-008 | 油窗组件 | Oil gauge window | 1 | 1 |
| 25 | 241WF1-005 | 后盖板 | Back cover | 1 | 1 |
| 26 | 13WF2-035 | 橡皮塞 (Φ 25.5) | Rubber cap | 1 | 1 |
| 27 | 241WF1-006 | 后盖板密封垫片 | Packing | 1 | 1 |
| 28 | 22T1-006 | 后盖板螺钉 | Screw | 8 | 8 |
| 29 | 22T1-007 | 后盖板螺钉垫片 | Washer | 8 | 8 |
| 30 | 7WF4-011 | 小挡油板 | Oil pan | 1 | 1 |
| 31 | 33T3-006 | 小挡油板螺钉 | Screw | 1 | 1 |
| 32 | | 弹簧垫圈 | Washer | 1 | 1 |

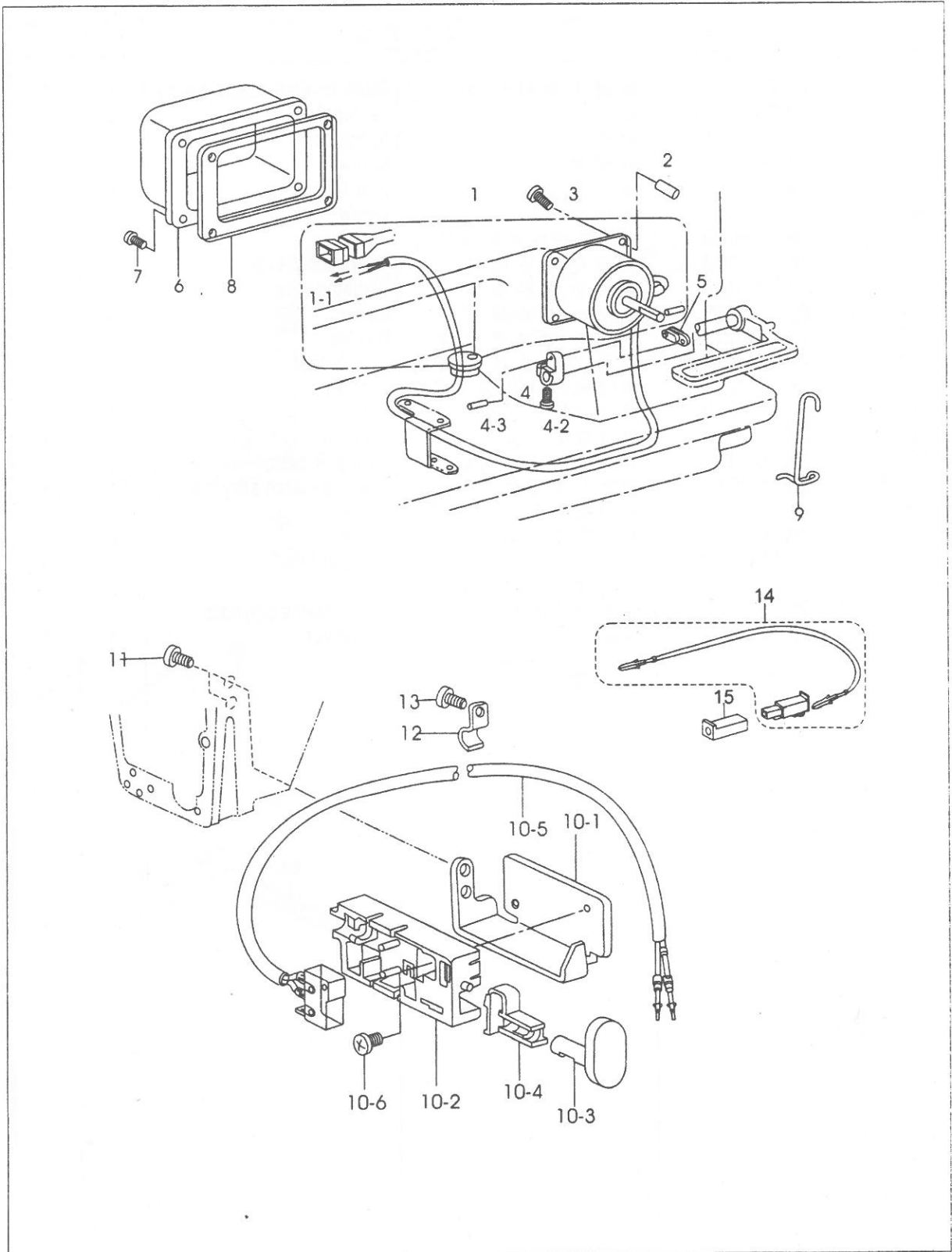
8.剪线部件 Thread trimming mechanism



8.剪线部件 Thread trimming mechanism

| 序号 No. | 图 号 Part Number | 零 件 名 称 Name | | 数 量 Qt. | |
|-----------|--------------------|-----------------|--------------------------------|---------|-------|
| | | | | 0303D | 6202D |
| 1 | 78WF1-004 | 驱动板 | Driven plate | 1 | 1 |
| 2 | 78WF1-005 | 软线支撑板 | Wire support | 1 | 1 |
| 3 | 78WF1-006 | 软线支撑板螺钉 | Screw | 1 | 1 |
| 4 | 78WF1-007 | 软线连板 | Link | 1 | 1 |
| 5 | 37T2-203 | 软线连板螺钉 | Screw | 1 | 1 |
| 6 | 78WF1-008 | 驱动板轴 | Screw pin, driven plate | 1 | 1 |
| 7 | 78WF1-009 | 驱动板弹簧 | Spring | 1 | 1 |
| 8 | 78WF1-010 | 驱动板轴紧圈 | Collar | 1 | 1 |
| 9 | 1WF1-024 | 驱动板轴紧圈螺钉 | Screw | 2 | 2 |
| 10 | 22T4-015 | 安装架连接螺钉 | Screw | 1 | 1 |
| 11 | 36WF5-008 | 驱动轴螺母 | Nut | 1 | 1 |
| 12 | 78WF1-001 | 剪线电磁铁转动组件 | Thread trimmer solenoid assy | 1 | 1 |
| 13 | 36WF1-056 | 安装架固定螺钉 | Screw | 4 | 4 |
| 14 | 21WF4-047 | 线夹螺钉 | Screw | 1 | 1 |
| 15 | 84WF1-022 | 线夹 | Wire holder | 1 | 1 |
| 16 | 2KT6-001C | 插头接头 | Terminal pin | 2 | 2 |
| 17 | 78WF1-001A | 剪线电磁铁销 | Pin | 1 | 1 |
| 18 | | 挡圈 | Retaining ring | 2 | 2 |
| 19 | 241WF6-001 | 松线钢绳组件 | Tension release wire | 1 | - |
| | 258WF6-001 | 松线钢绳组件 | Tension release wire | - | 1 |
| 20 | 2KT4-020 | 软线螺母 | Nut | 2 | 2 |
| 21 | 78WF1-012 | 软线座 | Tension release lever | 1 | 1 |
| 22 | 78WF1-013 | 定刀座螺钉 | Screw | 1 | 1 |
| 23 | 78WF1-014 | 定刀座螺母 | Nut | 1 | 1 |
| 24 | 78WF1-015 | 定刀座 | Holder, F-knife | 1 | 1 |
| 25 | 78WF1-016 | 栏线板 | Lower thread finger | 1 | 1 |
| 26 | 2KT6-017 | 栏线板螺钉 | Screw | 1 | 1 |
| 27 | 2KT5-002 | 定刀片螺钉 | Screw | 1 | 1 |
| 28 | 78WF1-002 | 定刀片 | Fixed knife | 1 | 1 |
| 29 | 78WF1-017 | 刀架 | Holder, M-knife | 1 | 1 |
| 30 | 2KT5-013 | 刀轴连杆螺母 | Nut | 2 | 2 |
| 31 | 78WF1-018 | 刀架(左) | Holder, M-knife, L | 1 | 1 |
| 32 | 22T6-008D3 | 驱动曲柄螺钉 | Screw | 1 | 1 |
| 33 | 78WF1-019 | 剪线电磁铁驱动曲柄 | Driven crank | 1 | 1 |
| 34 | 78WF1-020A | 刀架连杆螺钉 | Screw | 2 | 2 |
| 35 | 78WF1-020 | 刀架连杆 | Link | 1 | 1 |
| 36 | 78WF1-021 | 刀架螺钉 | Screw | 3 | 3 |
| 37 | 78WF1-022 | 刀架垫圈 | Washer | 1 | 1 |
| 38 | 78WF1-003 | 动刀片 | Movable knife | 1 | 1 |
| 39 | 2KT5-007 | 动刀片紧固螺钉 | Screw | 2 | 2 |
| 40 | 78WF1-023 | 凸轮曲柄轴 | Thread trimmer cam lever shaft | 1 | 1 |
| 41 | 78WF1-024B | 切线凸轮右曲柄 | Thread trimmer cam lever, R | 1 | 1 |
| 42 | 78WF1-025 | 扭簧端盖 | Collar | 1 | 1 |
| 43 | 78WF1-026 | 扭簧 | Spring | 1 | 1 |
| 44 | 241WF6-002 | 止动板 | Stopper plate | 1 | 1 |
| 45 | 21WF3-010 | 限位块螺钉 | Screw | 3 | 3 |
| 46 | 78WF1-028 | 限位块 | Positioning block | 1 | 1 |
| 47 | 78WF1-029 | 凸轮轴扭簧 | Spring | 1 | 1 |
| 48 | 22T3-002B2 | 紧圈螺钉 | Screw | 2 | 2 |
| 49 | 78WF1-030 | 凸轮轴紧圈 | Collar | 1 | 1 |
| 50 | 78WF1-024F | 塑料圈 | Plastic ring | 1 | 1 |
| 51 | 78WF1-024A | 切线凸轮左曲柄 | Thread trimmer cam lever, L | 1 | 1 |
| 52 | 78WF1-024C | 滚轮螺钉 | Screw | 2 | 2 |
| 53 | 78WF1-024D | 滚轮 | Roller | 2 | 2 |
| 54 | 78WF1-024E | 滚轮螺母 | Nut | 2 | 2 |
| 55 | 78WF1-001B | 剪线电磁铁安装架 | Thread trimmer solenoid base | 1 | 1 |
| 56 | 78WF1-001C | 密封垫圈(大) | Seal washer, big | 1 | 1 |
| 57 | | 剪线电磁铁紧固螺钉 | Screw | 3 | 3 |
| 58 | | 平垫片 | Washer | 1 | 1 |
| 59 | 78WF1-001D | 密封垫圈(小) | Seal washer, small | 1 | 1 |
| 60 | 2KT8-002 | 插头套 | Connector | 1 | 1 |
| 61 | 2KT8-003 | 线罩 | Cover | 1 | 1 |
| 62 | 21WF4-047 | 螺钉 | Screw | 4 | 4 |
| 63 | 78WF1-032 | 剪线电磁铁电线保护套 | Guard | 1 | 1 |
| 64 | | 螺母 | Nut | 1 | 1 |
| 65 | 241WF6-003 | 止动螺钉 | Screw | 1 | 1 |
| 66 | 241WF6-004 | 缓冲垫 | Packing | 1 | 1 |

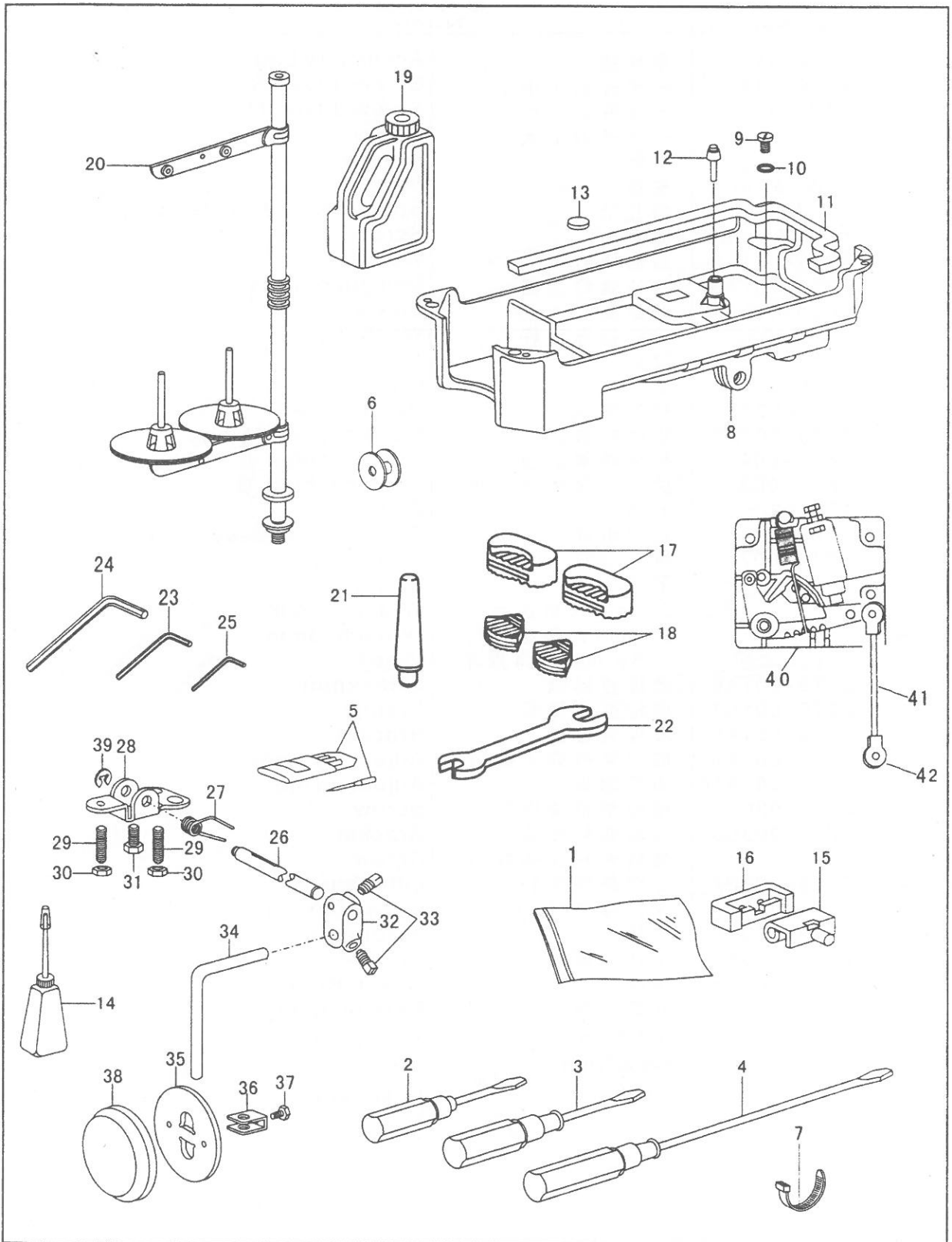
9. 倒缝部件 Reverse stitching mechanism



9. 倒缝部件 Reverse stitching mechanism

| 序号 No. | 图号 Part Number | 零件名称 Name | | 数量 Qt. | |
|-----------|-------------------|--------------|-----------------------------|--------|-------|
| | | | | 0303D | 6202D |
| 1 | 2KT6-001 | 倒缝电磁铁组件 | Quick reverse solenoid assy | 1 | 1 |
| 1-1 | 2KT6-001C | 插头 | Terminal pin | 2 | 2 |
| 2 | 2KT6-006 | 衬管 | Space collar | 4 | 4 |
| 3 | 2KT6-007 | 衬管螺钉 | Screw | 4 | 4 |
| 4-1 | 2KT6-004 | 倒缝电磁铁曲柄 | Solenoid lever | 1 | 1 |
| 4-2 | 2KT5-015 | 曲柄螺钉 | Screw | 1 | 1 |
| 4-3 | 2KT6-003 | 倒缝电磁铁曲柄连杆销 | Pin | 1 | 1 |
| 5 | 2KT6-002 | 倒缝电磁铁连杆 | Connecting lever | 1 | 1 |
| 6 | 2KT6-008 | 倒缝电磁铁罩 | Solenoid cover | 1 | 1 |
| 7 | 22T1-006 | 倒缝电磁铁螺钉 | Screw | 4 | 4 |
| 8 | 2KT6-009 | 倒缝电磁铁罩垫片 | Washer | 1 | 1 |
| 9 | 2KT3-011 | 倒缝操纵曲柄弹簧钩 | Cord holder | 1 | 1 |
| 10-1 | 2KT6-011 | 倒缝电磁铁开关安装架 | Support | 1 | 1 |
| 10-2 | 2KT6-013 | 倒缝按键开关座 | Base | 1 | 1 |
| 10-3 | 2KT6-015 | 倒缝按键开关 | Actuator | 1 | 1 |
| 10-4 | 2KT6-014 | 倒缝电磁铁开关触件 | Spring, R-switch | 1 | 1 |
| 10-5 | 2KT6-016 | 倒缝开关组件 | Reverse switch assy. | 1 | 1 |
| 10-6 | | 倒缝按键开关座螺钉 | Screw | 1 | 1 |
| 11 | 2KT6-012 | 开关安装架螺钉 | Screw | 2 | 2 |
| 12 | 2KT5-040 | 线夹 | Cord holder | 3 | 3 |
| 13 | 2KT6-017 | 线夹螺钉 | Screw | 3 | 3 |
| 14 | 2KT6-018 | 倒缝电磁铁组件 | Wire, reverse solenoid | 1 | 1 |
| 15 | 2KT6-019 | 接头(2) | Connector | 1 | 1 |

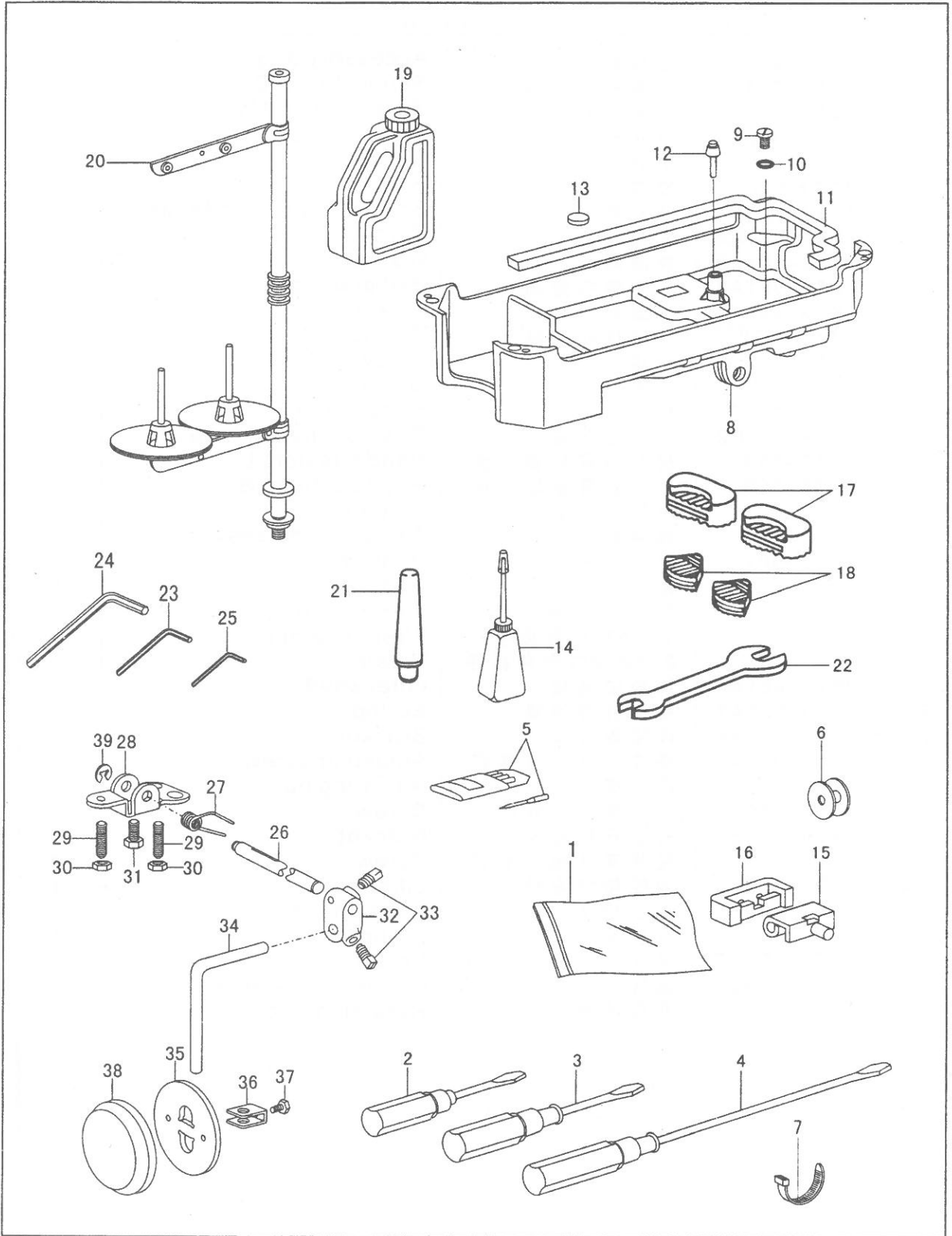
10. 0303D- 附件 Accessories



10. 0303D 附件 Accessories

| 序号 No. | 图 号 Part Number | 零 件 名 称 Name | | 数 量 Qt. |
|-----------|--------------------|-------------------|----------------------------|---------|
| | | | | 0303D |
| 1 | 33TF-010 | 零 件 袋 | Accessory bag | 1 |
| 2 | 33TF-014 | 一 字 开 刀 (小) | Screw driver, S | 1 |
| 3 | 33TF-013 | 一 字 开 刀 (中) | Screw driver, M | 1 |
| 4 | 33TF-012 | 一 字 开 刀 (大) | Screw driver, L | 1 |
| 5 | | 机 针 | Needle | 4 |
| 6 | 24WF2-001 | 梭 芯 | Bobbin | 3 |
| 7 | 129WF1-016 | 捆 扎 带 | Bobbin thread winder assy. | 3 |
| 8 | 122WF7-005 | 油 盘 | Screw | 1 |
| 9 | 22T9-001A2 | 放 油 螺 钉 | Washer | 1 |
| 10 | 22T9-001A3 | 放 油 螺 钉 垫 圈 | Belt guard assy. | 1 |
| 11 | 2KT9-008 | 油 盘 垫 | Screw | 1 |
| 12 | 4WF5-002 | 膝 控 提 升 顶 杆 | Washer | 1 |
| 13 | 22T9-012 | 磁 块 | Screw | 1 |
| 14 | 33TF-011 | 油 壶 | Oil pot | 1 |
| 15 | 22T9-007F1 | 机 壳 铰 链 | Head hinge | 2 |
| 16 | 22T9-007F2 | 机 壳 铰 链 套 | Cushion, head hinge | 2 |
| 17 | 1KT5-004 | 机 头 防 震 垫 块 (大) | Head cushion, L | 2 |
| 18 | 1KT5-003 | 机 头 防 震 垫 块 (小) | Head cushion, S | 2 |
| 19 | 1F-012 | 油 箱 | Oil tank | 1 |
| 20 | 4F-007 | 线 架 组 件 | Thread stand assy. | 1 |
| 21 | 1KT5-007 | 机 头 撑 杆 | Head rest | 1 |
| 22 | | 呆 扳 手 | Wrench | 1 |
| 23 | | 2 mm内六角扳手 | Wrench, 2mm | 1 |
| 24 | | 3 mm内六角扳手 | Wrench, 3mm | 1 |
| 25 | | 2.5 mm内六角扳手 | V-belt | 1 |
| 26 | 22T9-001A6 | 膝 控 铰 链 轴 | Lifter shaft | 1 |
| 27 | 22T9-001A7 | 膝 控 复 位 弹 簧 | Spring | 1 |
| 28 | 22T9-001A8 | 膝 控 限 位 架 | Bracket | 1 |
| 29 | 22T9-001A9 | 膝 控 限 位 调 节 螺 钉 | Adjusting screw | 2 |
| 30 | 22T9-001A10 | 调 节 螺 母 | Adjusting nut | 2 |
| 31 | 22T9-036 | 膝 控 限 位 架 螺 钉 | Screw | 1 |
| 32 | 22T9-003B3 | 碰 块 弯 杆 接 头 | Bracket | 1 |
| 33 | | 碰 块 弯 杆 接 头 螺 钉 | Screw | 各1 |
| 34 | 22T9-003B2 | 膝 控 碰 块 弯 杆 | Lifter bar | 1 |
| 35 | 22T9-003B5 | 膝 控 碰 块 | Knee lifter plate | 1 |
| 36 | 22T9-003B6 | 碰 块 架 | Stopper | 1 |
| 37 | 22T9-003B7 | 碰 块 架 螺 钉 | Screw | 1 |
| 38 | 22T9-003B8 | 碰 块 垫 | Cover, K-lifter plate | 1 |
| 39 | | 开 口 挡 圈 | Retaining ring | 1 |
| 40 | | 控 速 器 踏 板 | The speed machine pedal | 1 |
| 41 | | 踏 板 旋 臂 拨 杆 | Pedal arms shifter lever | 1 |
| 42 | | 踏 板 旋 臂 | Pedal arms | 2 |

11. 202D 附件 Accessories



11. 202D 附件 Accessories

| 序号 No. | 图号 Part Number | 零件名称 Name | | 数量 | Qt. |
|-----------|-------------------|--------------|----------------------------|-------|-----|
| | | | | 6202D | |
| 1 | 33TF-010 | 零件袋 | Accessory bag | | 1 |
| 2 | 33TF-014 | 一字开刀 (小) | Screw driver, S | | 1 |
| 3 | 33TF-013 | 一字开刀 (中) | Screw driver, M | | 1 |
| 4 | 33TF-012 | 一字开刀 (大) | Screw driver, L | | 1 |
| 5 | | 机针 | Needle | | 4 |
| 6 | 24WF2-001 | 梭芯 | Bobbin | | 3 |
| 7 | 129WF1-016 | 捆扎带 | Bobbin thread winder assy. | | 3 |
| 8 | 122WF7-005 | 油盘 | Screw | | 1 |
| 9 | 22T9-001A2 | 放油螺钉 | Washer | | 1 |
| 10 | 22T9-001A3 | 放油螺钉垫圈 | Belt guard assy. | | 1 |
| 11 | 2KT9-008 | 油盘垫 | Screw | | 1 |
| 12 | 4WF5-002 | 膝控提升顶杆 | Washer | | 1 |
| 13 | 22T9-012 | 磁块 | Screw | | 1 |
| 14 | 33TF-011 | 油壶 | Oil pot | | 1 |
| 15 | 22T9-007F1 | 机壳铰链 | Head hinge | | 2 |
| 16 | 22T9-007F2 | 机壳铰链套 | Cushion, head hinge | | 2 |
| 17 | 1KT5-004 | 机头防震垫块 (大) | Head cushion, L | | 2 |
| 18 | 1KT5-003 | 机头防震垫块 (小) | Head cushion, S | | 2 |
| 19 | 1F-012 | 油箱 | Oil tank | | 1 |
| 20 | 4F-007 | 线架组件 | Thread stand assy. | | 1 |
| 21 | 1KT5-007 | 机头撑杆 | Head rest | | 1 |
| 22 | | 呆扳手 | Wrench | | 1 |
| 23 | | 2mm内六角扳手 | Wrench, 2mm | | 1 |
| 24 | | 3mm内六角扳手 | Wrench, 3mm | | 1 |
| 25 | | 2.5mm内六角扳手 | V-belt | | 1 |
| 26 | 22T9-001A6 | 膝控铰链轴 | Lifter shaft | | 1 |
| 27 | 22T9-001A7 | 膝控复位弹簧 | Spring | | 1 |
| 28 | 22T9-001A8 | 膝控限位架 | Bracket | | 1 |
| 29 | 22T9-001A9 | 膝控限位调节螺钉 | Adjusting screw | | 2 |
| 30 | 22T9-001A10 | 调节螺母 | Adjusting nut | | 2 |
| 31 | 22T9-036 | 膝控限位架螺钉 | Screw | | 1 |
| 32 | 22T9-003B3 | 碰块弯杆接头 | Bracket | | 1 |
| 33 | | 碰块弯杆接头螺钉 | Screw | | 2 |
| 34 | 22T9-003B2 | 膝控碰块弯杆 | Lifter bar | | 1 |
| 35 | 22T9-003B5 | 膝控碰块 | Knee lifter plate | | 1 |
| 36 | 22T9-003B6 | 碰块架 | Stopper | | 1 |
| 37 | 22T9-003B7 | 碰块架螺钉 | Screw | | 1 |
| 38 | 22T9-003B8 | 碰块垫 | Cover, K-lifter plate | | 1 |
| 39 | | 开口挡圈 | Retaining ring | | 1 |